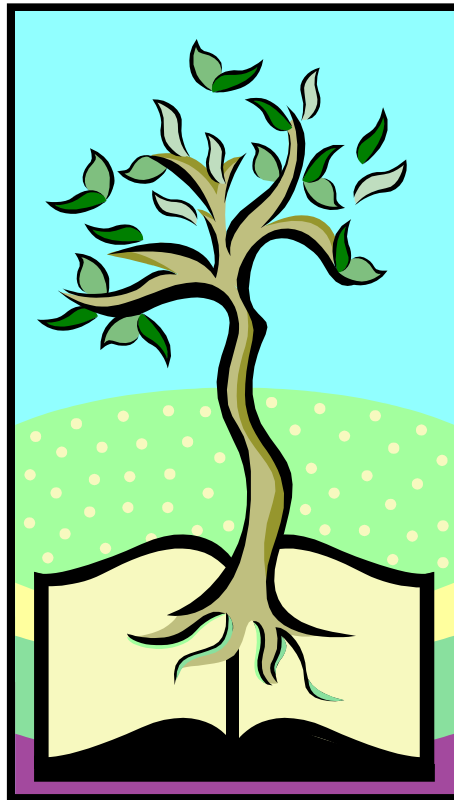


**Linby cum Papplewick C.E. Primary School
Ethos Statement**



LIFE GIVING EDUCATION



'Blessed are those who trust in the Lord...They are like trees planted along a river bank, with roots that reach deep into the water. Such trees are not bothered by the heat or worried by long months of drought. Their leaves stay green; they go right on producing delicious fruit.' Jer 17:7-8 (NLT)

'Let your roots grow down into Christ and draw up nourishment from him. See that you go on growing in the Lord, and become strong and vigorous in the truth.' Col 2:7 (LB)

'For God has planted them like strong and graceful oaks for his own glory.'
Isaiah 61:3 (LB)

'For every tree is known by its fruit. For men do not gather figs from thorns, nor do they gather grapes from a bramble bush.' Luke 6:44

LIFE GIVING EDUCATION



Ethos Statement

The ethos of Linby cum Papplewick C.E. Primary School is our motivation for all our work. **It is to work together to extend the Kingdom of God** (Rom 14:17-19) on earth by serving our community in **the provision of excellent primary education**. We seek to 'Shine as a Light' to our community, reflecting God's love, peace, joy, truth, justice, mercy and forgiveness through the enabling power of the Holy Spirit. We are guided and inspired by the message, life and example of Jesus through which God's unconditional love for all people is expressed.

Our ethos is given life through our **relationships**. The way we work together and behave with one another and those we seek to serve demonstrate and authenticate our ethos. It is through these relationships, with each other and those whom we seek to serve, that we practise our ethos.

Our ethos or motivation, and therefore our relationships, are **rooted in our faith in Jesus Christ and in his love, which compels us to serve others**. This faith directs and influences our internal relationships as well as our work with those who Linby cum Papplewick C.E. Primary School is seeking to serve. Our activities are an outworking of our faith. The link between who we are and what we do cannot be broken.

© Faithworks 2003

Values

Values about Linby cum Papplewick School as an Organisation

- **Purpose**, hope and truth are rooted in Christ Jesus;
- We live in the '**Light of Eternity**' and not solely for this life on earth. This relates to a life perspective and the purpose of our lives and therefore impacts the context for decision making and curriculum;

- **Integrity** - We believe that our mission and purpose to extend the Kingdom of God on earth – is indissolubly linked with how we operate internally. The values, which we promote for ourselves as a school, should be matched by those that we practice when relating to others. The link between who we are and what we do cannot be broken as our actions are driven by our values and motivations.
- **Authenticity** - This school believes that its purpose - to extend the Kingdom of God on earth through our activities - flows out of our desire to work towards the same for ourselves as a school. The love and care with which we serve others should be authenticated by the same love and care which we have for each other.
- **Transparency** - We believe that we should be open and transparent about our beliefs and the link between our beliefs and our mission in matters of publicity (prospectus, website etc.), employment (applicants pack) etc.
- **Accountability** - We believe that all we have comes from God and that we should exercise wisdom, integrity and responsibility in using the resources entrusted to us.
- **United effort by Christians** - We are committed to maintaining our distinctively Christian ethos by ensuring that Christians - as staff and volunteers - are appointed to those positions, which we have agreed, require Christians to fill them. (At present the governing body have agreed that the School Leadership (head teacher & deputy head teacher and Foundation Governance should all be Christian *i.e. a practising Christian and Communicant member of the Church of England or a church that is a member of Churches Together or the Evangelical Alliance*)
- **Diversity** - We believe that we have a duty to maintain our Christian distinctiveness by recruiting those who are committed to Christ's teaching about the Kingdom of God. However, at the same time we want to embrace the values of inclusivity and diversity by welcoming and involving those of other faiths and those of none, whilst maintaining the Christian character and ethos of the school.

- **Servant leadership** - We believe in working for the common good, through partnership with St Michael's Linby cum St James' Papplewick Parish Church, our Diocese and other Christian schools, churches, charities and voluntary and statutory agencies. In particular, we seek to encourage, serve and build up other bodies, recognising their role within local communities and global community.

Values about People

- **Every person is loved** by God;
- **Childhood** is valued.
- **Identity** – We believe every person is **unique**: with unique gifts, abilities, needs, interests, personality and experiences and a unique calling. The unique nature of each individual (our identity) is fully manifested & expressed only in **relationship** to others. (1 Cor: 12). We see everyone as made in **God's image** – as such having **choice** and thus being a **creative** being. We **respect** every individual's God given **freewill** and therefore choice of values, faith and belief system.
- **Equality** - We affirm the God-given value of each person and believe in the equal value of all. We stand for respect and freedom for everyone and understanding between people of different opinions. Every person should be **loved, valued, respected** and be **listened** to; (Children are loved and respected – Matt 19:13-14)
- **Discipleship** - We believe that as we serve others we learn as much about ourselves and our relationship with God as we do about the work.
- **Well-being** (physical, emotional & spiritual) - We believe that God created people in His image, to be whole human beings and to flourish. We believe that an individuals well being should characterise their lives in the school and wherever else we belong and participate.
- **Transformation** - We believe that everyone should have the opportunity to develop and change, realizing their potential and thus making a full contribution to the school and to society in general. We believe that as we grow and change, not only are we transformed but also the world around

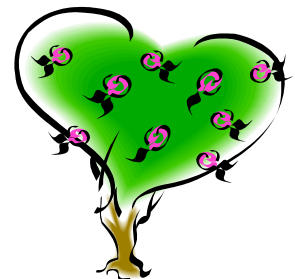
us is. We believe that everyone is a learner and should be encouraged, supported and challenged to become who he or she can be. Learning who we are in God is as important as learning how to do the job. People's gifts, abilities, needs, interests, personality, experiences and calling may all **change** with time.

Values about the Way we Work

- **God's love** should permeate all that happens in school. Loving **relationships** are of the highest priority (relationship with God (prayer & worship), each other and wider creation); – Deut. 6:5, Matt 22:37-40, 1 Cor 13:4-7. Love is seen as a selfless way of living enabled by God's Holy Spirit and centred in the Love of God for us in Jesus' sacrificial life;
- **Commitment to each other** - We believe that a respectful society is one in which people of different opinions can live together in peace. In working together to deliver the work of the school we want to endeavour at all times to trust one another, being patient and forbearing. We should work at paying attention to the way we speak to one another, attempting to listen well, even when it is uncomfortable to do so, being able to confront difficulties carefully and with compassion. We endeavour to be sensitive to the needs of each other and to support one another. (Lev. 19:17, Prov 10:12, Prov 25:8-12, Matt 18:15-20, Gal 6:1-5, Eph 3:14 – 5:21, Eph 6:5-9, Col 3:12-17)
- **Interdependence** - We believe that each person has his or her own part to play and contribution to make to the whole. We believe that every opportunity should be taken to exchange views so that we can improve our understanding of ourselves and of one another and of the work we do. (Prov 1:5, Eph 4, Col 3:12-15)
- **Community** - We believe that a healthy community is one to which people feel that they belong. Within this school we are committed to the same way of life where staff and volunteers experience a sense of belonging to and identity with the school. We believe that successful delivery of our mission happens when people feel they belong and have a role, where inclusive community and a family atmosphere are fostered.

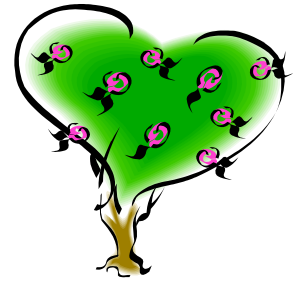
- **Stewardship** – all that we have is a gift from God (the earth, our lives, our time, our relationships and our personal gifts & talents) and as such must be treasured and used to God's glory; – Matt 25:14-30 , Gen 1:28
- **Education** is a shared responsibility between parents, school and the church;
- The **purpose** of school is both about the **here and now** and the **future** – children should be enjoying their learning experiences in school and the learning should enable all children to develop their talents to the full, realise their God given potential and enable them to fulfil their unique role in creation as part of the body of Christ (the church) and the life everlasting;
- We seek to be an **inclusive** school with an inclusive curriculum;
- The curriculum as a whole and every part of it has a **spiritual** dimension, since everything ultimately relates to God;
- Christian Values in **Relationship & Sex Education** are distinct;
- The primary purpose of **assessment** is formative – to enable, encourage and motivate children to do their best, teachers and the school to reflect on the effectiveness of teaching and to inform planning of teaching and school strategic development. Children should develop a self awareness, good self esteem and self image and be encouraged to self assess and set their own goals and targets.

Some elements are adapted from Faithworks 2003 (National Society Website)



LIFE GIVING EDUCATION

Distinctive Christian Practice



- The **cross and the Christian nature** of the school is celebrated and has high visual presence;
- The **senior leadership** of the school is Christian and the Head Teacher is commissioned by the church to lead the school guided by Christian principals;
- The Chair of Governors is elected and is currently the **Rector** of the parish church;
- **Parental Partnership** in the education of children is valued and encouraged;
- **Learning** is seen as a journey of discovery and finding identity, meaning, purpose, truth and hope in a context of discovering about ourselves and our relationship to each other, the world and God;
- **Discipline** is loving and in the context of encouraging understanding of responsibility, learning appropriate behaviour and understanding God's grace and the need for forgiveness;
- Quality inclusive **Christian collective worship** is valued as an essential part of school life;
- **Christian Spirituality** seeks to permeate and underpin the entire curriculum;
- We seek to provide a **curriculum** which **values** and nurtures the whole child/individual - **all intelligences/giftings** (Gardner's 8 intelligences & physical, emotional, intellectual and spiritual aspects of the person) as such we seek to equally value all intelligences. Everyone is seen as

equally important as are their individual giftings this is reflected in the Gifted and Talented policy – 1 Cor 12;

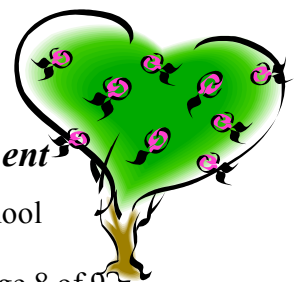
- Learning about **relationships** have a high priority in the curriculum;
- Children are taught to be **responsible** for their own giftings, time (always doing their best in everything), their relationships and the world, and to use these in the service of others;
- Children are told **stories from the Bible** (which includes Godly Play);
- **Prayer** is a part of daily life as a staff and as a school community;
- **Quality R.E.** is seen as essential and is given high profile/priority – it reflects: our eternal perspective; the importance of the search for purpose, hope and truth to the school; will empower children to make their own decisions with regards their faith in the knowledge of many faith perspectives/ethical systems and not in ignorance; and reflects our respect for the belief systems of others and our desire to seek to respect, value and understand everyone;
- **Relationship and Sex Education** is distinctively Christian.
- **Assessment** is primarily used for formative purposes – to enable, encourage and motivate children to do their best, teachers and the school to reflect on the effectiveness of teaching and to inform planning of teaching and school strategic development. Children should develop a self awareness, good self esteem and self image and be encouraged to self assess and set their own goals and targets.

Among the most significant purposes of education are forming people of love, care and compassion, with a deep sense of hope, who appreciate beauty and wonder and who serve the world by their gifts. – The curriculum is not the purpose of education but the means to the end.’ Professor Bart J McGettrick – University of Glasgow, Thinking about Thinking, March 2004

***‘It is in Christ we find out who we are and what we are living for.’
Matt 16:25 Msg***

Appendix 1 Linby cum Papplewick C.E. School Ethos Statement

K:\Administration\Website\Website Info\Linby cum Papplewick CE Primary School Christian Ethos.doc
Last printed 10/19/2012 2:32:00 PM



Christian Values for Schools (National Society)

www.christianvalues4schools.co.uk

Appendix 2 Scriptural References