



Part of the
Ted Wragg TRUST

Queen Elizabeth's School

Cover Supervisor

"Queen Elizabeth's is an ambitious school, dedicated to providing an excellent education that develops knowledge, character, contribution and wisdom."

**Paula Smith,
Headteacher**



TABLE OF CONTENTS

- Key Details
- How to Apply
- About QE
- A Warm Welcome from our CEO
- Job Description
- Person Specification
- #lifeattedwragg
- The Ted Wragg Institute
- Our Ted Wragg Standard
- Our Benefits
- Our Trust Journey



Key Details

Salary

Grade D

Location

QE School

Hours

32.5 hours per week over 39 weeks,

Interviews

TBC

Closing date

12 August 2025

Required from

September 2025

Our vision is for Queen Elizabeth's to be an exceptional school which enables our young people to flourish in life and make a positive difference to their community. We will achieve this by providing an excellent education that develops knowledge, character, contribution, and wisdom.

At Queen Elizabeth's we champion the characteristics we know our young people need to lead a successful and fulfilled life. Ambition, a sense of community and kindness are essential for human flourishing and are at the core of what we do as a school.

Ambition: we work hard to be the best we can be so that we flourish in life.

Community: we take part in opportunities to make a positive difference to ourselves, each other and our wider community. We honour being together and are proud to be part of our school.

Kindness: we act with kindness so that others feel respected, valued and cared for.

How to apply

For an informal conversation about the position please contact Anna Field at anna.field@qe.devon.sch.uk

An application pack can be found at <https://www.tedwraggtrust.co.uk/vacancy> or click on the apply now button





Dear Applicant,

Thank you for your interest in this post at Queen Elizabeth's School. The school currently has 1167 students on roll of whom 135 are in the Sixth Form. The majority of our students are drawn from our partner primary schools across mid Devon and the greater Exeter area.

Founded in the 16th century, our school is set in the market town of Crediton, just 7 miles from Exeter. We are an ambitious school dedicated to providing an excellent education that develops knowledge, character, contribution and wisdom. Our Year 7 and 8 students are taught on our Lower School site and Years 9-13 at our Upper School site on Western Road.

At Queen Elizabeth's our coaching programme supports all colleagues to continuously improve their classroom and leadership practice. We were delighted to be judged as Good in the most recent Ofsted report in May 2022, which recognised our high-quality curriculum and continued improvement in achieving positive outcomes for all students. Through high quality teaching and a broad range of extra-curricular activities ensure that our students and staff live out our values of ambition, community and kindness.

Our pillars of staff culture support all of our interactions as a school. This means being better every day, putting the team before the individual and demonstrating kindness by being both warm and strict.

By actively committing to these values and behaviours, staff will contribute to creating a school culture where everyone flourishes.

This recruitment pack outlines the key duties and accountabilities of the post.

The successful applicant will:

- have a clear, well communicated understanding of the most effective teaching and learning techniques that lead to strong student progress.
- possess the skills and determination to make a positive difference to the lives of our students.
- be relentless in encouraging all students to build their knowledge and actively contribute to school life within our community so that they develop a sense of pride and belonging.

Yours sincerely

Paula Smith – Headteacher

A Warm Welcome from our CEO



An ambitious and inclusive Trust of schools strengthening our communities through excellent education.



Moira Marder, OBE

On behalf of the Ted Wragg Trust, I would like to thank you for your interest in working for our Trust. This is an excellent opportunity to join our Trust and work in one of our 17 schools.

In our **ambitious** and **inclusive** Trust of schools we know that every individual is critical to help us to achieve our collective mission to **transform lives, strengthen communities** and **make the world a better place**.

Our values driven, growing 2-18 Trust, has the highest expectations for every child, every day, with social justice at our core. In this pack you will find out more about how we **support, develop** and **grow great people**.

This is a hugely exciting time for our Trust as we continue to grow, embed, improve and innovate to **improve the life chances of all children** in the South West.



We demonstrate our love through our values

How we will succeed



Job Description

Key Purpose of Job

To supervise whole classes during short-term absence of teachers and to respond to questions and generally assist pupils in undertaking set activities.

Students, regardless of their social or cultural background, are motivated to succeed and are supported to maximise their learning and progress at School.

Key Duties and accountabilities of the post

- Supervise whole classes during pre-planned learning activities, which have been set in accordance with school policy
- Collect finished work, as necessary, and return to the appropriate teacher
- Provide 1-1 support to students and support other classroom activities when cover is not needed
- Promote positive values, attitudes and good pupil behaviour, dealing promptly with conflict and incidents in line with established policy and encouraging pupils to take responsibility for their own behaviour
- Report, as appropriate, using the school's agreed referral procedures on the behaviour of pupils during the class, and any issues arising
- Establish productive working relationships with pupils, acting as a role model and setting high expectations for behaviour
- Promote the inclusion and acceptance of all pupils within the classroom
- Work consistently whilst recognising and responding to individual pupil needs
- Encourage pupils to interact and work co-operatively with others
- Promote independence and employ strategies to recognise and reward achievement of self-reliance

Whole School Duties as Required

- Support invigilation for examinations.
- Assist with the supervision of pupils out of lesson times, including break and lunchtimes.
- Accompany teaching staff and students on visits, trips and out of school activities.

Other Duties

- To undertake additional duties as required, commensurate with the level of the job.
- To contribute to the effective working of the school.
- Maintain positive, professional relationships with students, parents / carers and teachers.
- Maintain a presence around the school to ensure that the highest standards of behaviour and site-usage are upheld.
- To participate in induction training, staff review processes and professional development opportunities.
- All staff must commit to Equal Opportunities and Anti-Discriminatory Practice.
- The School operates a Smoke-Free Policy and the post-holder is prohibited from smoking in any of the school buildings, enclosed spaces within the curtilage of buildings, and school vehicles.
- The post-holder will be expected to have an agreed working pattern to ensure that all relevant functions are fulfilled through direct dialogue with employees, members of other agencies and community members.
- The post-holder is expected to familiarise themselves with and adhere to all relevant school policies and procedures.
- The post-holder must comply with the school's health and safety requirements specifically for the school they are working at
- The duties of this post may vary from time to time without changing the general character of the post or level of responsibility entailed.

Qualifications and Experience	Essential/Desirable
Minimum Level 2 qualifications (GCSE or equivalent, to include English and Maths)	Essential
Good numeracy/literacy skills.	Essential
Requirement to participate in training/development as/when identified by line manager as essential for performance of the post.	Essential
Detailed knowledge of safe working practices in relation to the handling and usage of hazardous equipment and tools.	Essential
Experience of working with young people	Essential
Effective team player.	Essential
Vision aligned with Queen Elizabeth's high aspirations/expectations of self and others.	Essential
Genuine passion and a belief in the potential of every child.	Essential
Motivation to continually improve standards and achieve excellence.	Essential
Ability to use own initiative and to work independently and also to work as part of a team.	Essential
Ability to work under pressure and remain calm in difficult situations.	Essential
Commitment to driving standards and ensuring every child is challenged to achieve their maximum potential.	Essential
Has good communication, planning and organisational skills.	Essential
Demonstrates resilience, motivation and commitment to driving up standards of achievement.	Essential
Acts as a role model to staff and children.	Essential
Excellent communicator who enjoys working as part of a team.	Essential
Commitment to regular and on-going professional development and training to establish outstanding classroom practice.	Essential
Committed to equality of opportunity and the safeguarding and welfare of all pupils	Essential
Effective use of ICT packages e.g. Word, Excel or equivalent.	Essential
Ability to fulfil all spoken aspects of the role with confidence and fluency in English.	Essential
This post is subject to an enhanced DBS disclosure	Essential



#lifeattedwragg

We know that our people are our **greatest asset** and research tells us that happiness at work is directly linked to student happiness and consequently **student outcomes**.

We are working hard to make sure that all our employees **love coming to work**.



Our Trust is dedicated to fostering an environment where employees can **reach their full potential, with dignity, respect, and equal opportunities for all**.

We value the unique contributions of each individual, recognising that **diversity strengthens our community and makes our Trust a positive place to work and grow**.

We are committed to excellent employment practices that attract and retain talent from a variety of backgrounds and communities.

The aim of our people strategy is to be the **greatest place to work in the South West**.

We know that to realise our ambitious aim we must **welcome, retain and develop our great people** who work day in day out to **transform the lives of the children in our Trust**.



#lifeattedwragg is focussed on ensuring all our employees:

- **Love coming to work** and have a strong sense of belonging
- **Experience high quality development** through our dedicated development curriculums delivered by the Ted Wragg Institute
- **Inspire others** with their open and collaborative approach

To find out more about what it is like to work at the Ted Wragg Trust, explore our development curriculums and hear from our employees please visit our website at www.tedwraggtrust.co.uk/workwithus



The Ted Wragg Institute



We want to ensure that our people feel **invested** and **fulfilled in their role** by providing personalised, relevant and engaging professional development. Our brand-new **Ted Wragg Institute** (TWI) delivers our **high-quality development** offer for all, across our family of schools.

Our incredible offer includes Trust CDP, Leadership Development, Networks, Cohort-specific training and NPQs. Take a look at our offer this year here.

Early Career Teachers

If you are an Early Career Teacher you will benefit from our tailored Early Career Framework combining weekly instructional coaching, asynchronous independent learning, online 'clinics' and in-person conferences. With a dedicated mentor or coach and access to supportive networks the ECTs in our Trust are supported and developed to reach their full potential.

Our professional development delivery model

Our professional development delivery is underpinned by our Education key concept (see page 8). We believe that professional development should build knowledge, motivate, develop techniques and embed practice.

At the Ted Wragg Trust, we are research informed and believe that it is important that everyone involved in sharing ideas understands the underlying rationale and evidence base. We ensure that professional development is:



Sustained

Frequency is critical,
not time span



Practice-Based

Create new habits



Domain-Specific

Create new habits



External Expertise

Challenge the familiar
& refresh ideas



Professional Buy-In

Purpose & benefits
eclipse volunteering

We believe this slightly adapted model from 'Teaching Walkthrus 2', Tom Sherrington and Oliver Caviglioli is applicable to all professional development and will underpin the delivery of all our professional development networks, seminars and webinars.



Our Ted Wragg Standard



Our Ted Wragg Standard provides a **minimum set of high standards** across all our schools to establish clear structures, implement effective processes and hold each other to account **to enable excellence**. It is based on our three key concepts: Leadership, Education and Every Child Succeeds.

Key Concept: Leadership



We believe that great leadership:



Fiercely educates



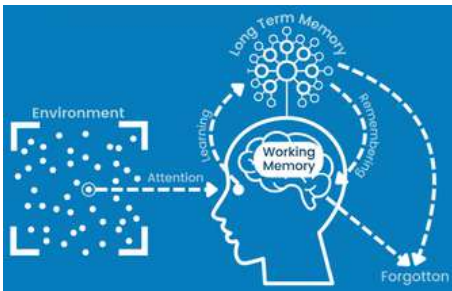
Thrives in a complex system



Is locally enabled

Key Concept: Education

We have a clearly defined and articulated learning model that is understood by all teaching staff. This model of the learning process uses the concepts of Working Memory and Long-Term Memory. It draws on ideas from Cognitive Load Theory and the work of Daniel Willingham.



Key Concept: Every Child Succeeds



We believe individual development is well explained using Maslow; that an individual grows in an ecosystem and can be interpreted using Bronfenbrenner's work, and that we are interdependent.

We believe that to enable our children to live a life of opportunity, we need to understand what true inclusion means. To us, our model is based on Maslow's hierarchy of needs and the Bronfenbrenner's ecology of inclusive education.

Microsystem

Child

- sleep well
- eat breakfast
- follow school rules and routines
- attend school regularly

Family

- healthy sleep patterns
- nutritional diet including breakfast
- Online safety parental controls
- adequate housing
- clean clothing
- Support school policies
- Protect from dangers
- attend medical appointments
- Ensure attendance is good

School

- Behaviour, Health and Safety
- Accessibility, Safeguarding, Supporting Pupils with Medical Conditions and Anti-Bullying Policy
- Online Safety lessons and workshops for parents/carers
- Early Help support
- First Aid trained staff
- Attendance Engagement Officer and Attendance Policy
- Nutritional lunches and free breakfast
- Foodbank support
- Wrap around care

Mesosystem

- We endeavour to provide a safe and welcoming environment for pupils and their families.
- We listen to our pupils and families and take seriously what they tell us.
- We work in partnership with other agencies such as CAMHS and Early Help

Macrosystem

- Keeping Children Safe in Education
- Teacher Standards
- Devon and Plymouth Children's Social Services
- 0-25 SEND Team
- Virtual School

Our Benefits

A critical part of our People Strategy is to ensure that we welcome and retain our great employees and ensure that they are supported both at home and at work.

When you join our Ted Wragg family we are here for you every step of the way. Here are some of the benefits we offer:



Exceptional development and networking opportunities



Cost of blue light cards can be claimed through expenses



Free annual flu jab, eye test and allowance for glasses



Exclusive discounts, cashback and vouchers



Free, confidential employee helpline. Available 24-7 through Health Assured



Access to Wisdom app to support your mental health



Up to 10% off all Pure Gyms



up to the value of £2,000.



Up to 2 days paid emergency time off for dependants



Generous public sector pension schemes for all staff



Timetabled instructional coaching for all teachers



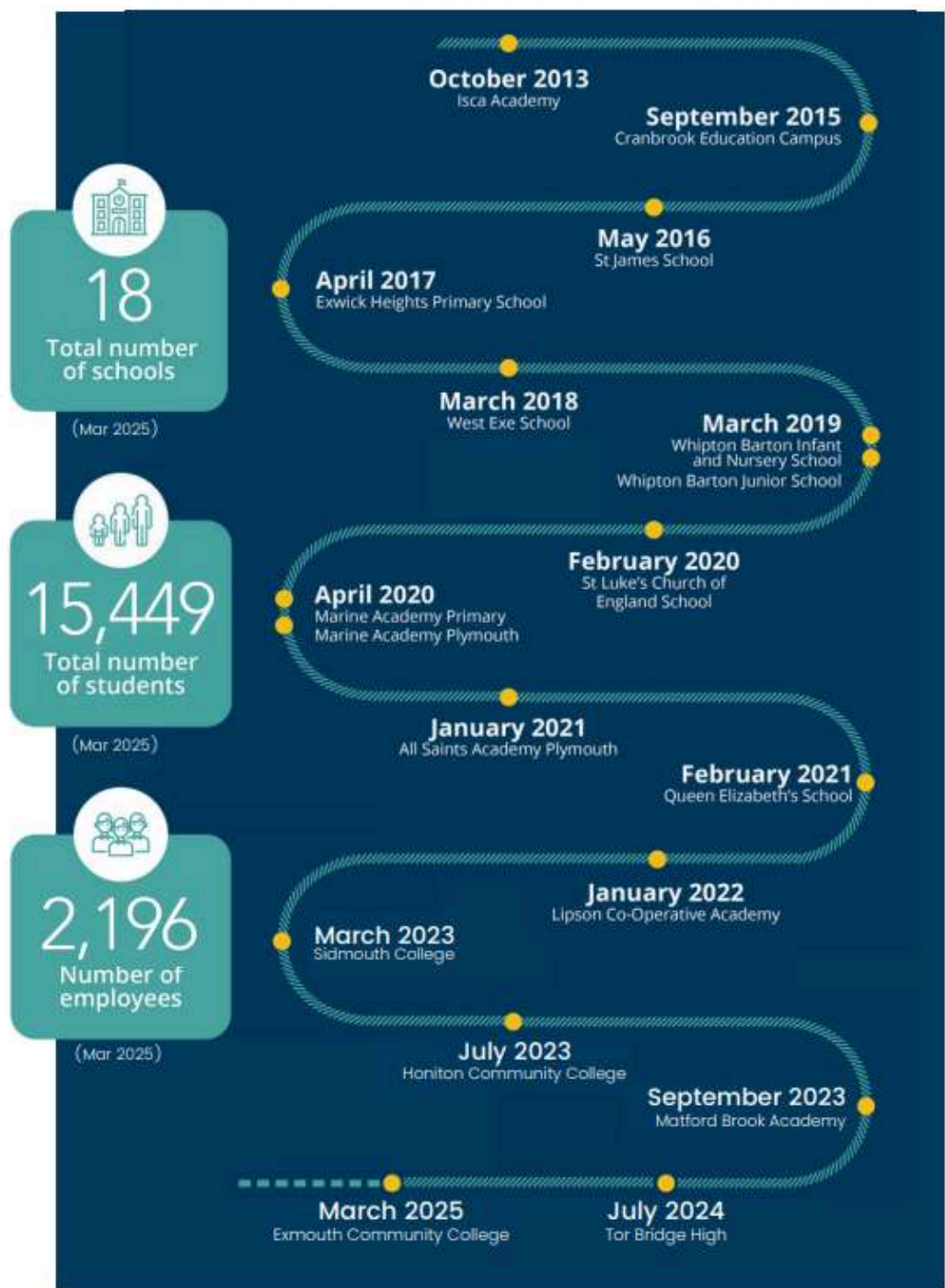
Family friendly policies and flexible working opportunities



Our Trust Journey



Professor Ted Wragg, in whose memory the Ted Wragg Trust is named, was passionate about how education can transform young people's futures.





Part of the
**Ted
Wragg** TRUST

Thank you for your interest in working for us!

