

THE
TURING
SCHOOL

Curriculum Lead of PSHE
The Turing School
Information



CONTENTS

Welcome	3
Job Description	4
Person Specification	8
Working at The Turing School	9
How to find us	9
Application Process	10
Overview of Swale Academies Trust	12



Welcome

Dear Applicant,

I am delighted that you are interested in becoming part of the team at The Turing School.

The Turing School is a proudly comprehensive and fully inclusive school of approximately 780 students.

There is a consistent approach to lesson planning, teaching and marking at the school and an explicit focus on differentiation and quality of work in books. At the heart of our vision for the school is a relentless drive to ensure that all pupils make good progress in every subject. Our curriculum is broad and balanced, offering courses to suit pupils of all abilities.


At The Turing School we are committed to securing excellence in learning and progress for all students through exciting and stimulating teaching, and a rich curriculum which encourages a love of learning. We want all students to have high expectations of themselves and to develop as enthusiastic, creative and positive young people who display good personal, social, emotional and spiritual development. At The Turing School, we know all of our pupils and take the time to support and guide them towards targets and goals that are realistic and personalised.

We promote self confidence and belief, supporting students to face the challenges future life brings, alongside an awareness and understanding of the values of our society and other cultures. We seek to celebrate our pupils' talents and skills at every opportunity and are proud of what we achieve together as a school community. To achieve our vision, we place the recruitment, retention and professional development of excellent teachers as a top priority.

Our modern, well equipped building has excellent facilities offering an inspiring modern learning environment, with well resourced classroom spaces. The Turing School is part of a multi-academy trust focused on school improvement, collaboration and continuous learning.

The Turing School is committed to safeguarding and promoting the welfare of children and young people and expects all staff and volunteers to share this commitment. All posts are subject to an enhanced DBS check. As a school dedicated to the principle of equal opportunities, we aim to ensure that staff recruitment is fair and open to all regardless of age, social class, disability, religion, ethnic origin or sexual orientation within the context of a detailed person specification.

Kind regards



Sarah Doyle
Headteacher

Job Description

Job Title: Head of PSHE
Grade: MPS/UPS + TLR2B
Responsible to: Headteacher

Purpose of the job:

The current School Teachers' Pay and Conditions Document describes the general professional duties which teachers are expected to undertake in the course of their employment.

Teachers are also expected to perform particular duties as may reasonably be assigned to them by the Headteacher.

For the purpose of this general job description these particular duties are:

Curriculum:

- To plan and prepare courses.
- To continuously review teaching methods, schemes of work and resources as necessary.
- To advise and co-operate with the line-manager, other teachers and the Senior Leadership Team on the preparation and development of courses of study, teaching materials and resources, teaching programmes, methods of teaching, assessment and pastoral arrangements.
- To participate in meetings of the school which relate to the curriculum for the school or the administration or organisation of the school, including pastoral arrangements.
- To take part as required in the review, development and management of activities relating to the curriculum, organisation and pastoral functions of the school.

Professional Development etc:

- To participate in any arrangement within an agreed national framework for the performance management of performance and that of other teachers.
- To participate in arrangements for further training and professional development as a teacher.
- To contribute as appropriate to the selection for appointment and professional development of other teachers and support staff, including the induction and assessment of new and newly qualified teachers.
- To co-ordinate or manage the work of other teachers as appropriate.
- To manage or supervise support staff as necessary.

Pupils:

- To plan and prepare lessons.
- To teach pupils assigned, including setting and prompt marking of work carried out by pupils in school or elsewhere.
- To set relevant and sufficient homework, according to the homework timetable, and to ensure prompt marking of the homework or coursework.
- To assess, record and report on the development, progress and attainment of pupils, according to departmental and whole-school policies.

Job Description

- To participate in the arrangements for preparing pupils for public examinations. To assess pupils for the examinations and record and report these assessments.
- To promote the general progress and wellbeing of individual pupils and of any class or group assigned.
- To provide guidance and advice to pupils on educational and social matters and on their future education and careers, including information about the sources of more expert advice on specific questions.
- To make records of, and reports on, the personal and social needs of pupils.
- To provide or contribute to oral and written assessments, reports and references relating to individual pupils and / or groups of pupils.
- To maintain good order and discipline among pupils and to safeguard their health and safety both when they are authorised to be on the school premises and when they are engaged in authorised school activities elsewhere.
- To attend assemblies and to supervise tutor groups while in assembly, unless the teacher wishes to opt out of any religious aspect of assembly where this is against their beliefs.
- To accurately register pupils at a.m. and p.m. registration and during lessons and at any other time necessary before, during or after school.
- To provide, as a Tutor, the individual contact, knowledge and support for pupils within the allocated tutor group and to liaise with parents and other staff accordingly, as appropriate.
- To contribute to the personal and social education of pupils generally and specifically through the teaching of the PSE programme to the tutor group.
- To support all colleagues in ensuring that high standards of uniform and behaviour are maintained within the school.
- To work with other colleagues to ensure that there is a consistent approach in ensuring pupils abide by the school's code of conduct and the same consistency in dealing with pupils who do not conform to school rules.
- To make relevant records and reports as necessary.

Parents and the wider community:

- To communicate and consult with the parents of pupils when required.
- To communicate and co-operate with other persons and outside agencies as required.
- To participate in meetings arranged for any of the purposes described above.
- To foster good relationships with parents.

Resources and Accommodation:

- To take responsibility for the care of resources, accommodation and fabric of the school, particularly when pupils are present.
- To allocate, as appropriate, equipment and materials in connection with his/her teaching.

Policies and Staff Handbook:

- To ensure that all departmental and school policies are understood and complied with.
- To ensure that they have read and understands the contents of the Staff handbook and complies with all the requirements detailed in the handbook.

Job Description

Administration:

- To participate in administrative and organisational tasks related to the above duties.

Health and Safety:

- To accept responsibility for own safety – as well as that of the pupils and colleagues with whom you work.
- To undertake Health and Safety training offered.
- To be aware of Health and Safety issues and the hazards associated with manual handling tasks, including the cumulative effect of repeated manual handling operations.
- To follow any control measures and care plans required by the generic or individual risk assessments.
- To be familiar with and use available equipment safely.
- To be aware of own limitations and inform your employer of any circumstances that may alter your ability to perform manual handling tasks.
- To report accidents and hazards.
- To report deficiencies in the employer's Health and Safety protection arrangements.

TLR responsibilities

Head of Department

In addition to the requirements of a class teacher and any other agreed responsibilities:

- Lead, manage and develop the team teachers
- Role model outstanding classroom practice.
- To be accountable for the results of the RE and Philosophy department and to support, hold accountable, develop and lead the team.
- To work with subject teachers to develop their classroom organisation and teaching methods, including providing regular feedback for their team in a way which recognises good practice and supports their progress against performance management objectives.
- Provide and facilitate professional development of colleagues.
- To ensure high quality teaching resources are developed and consistently used across the subject area.
- To identify areas for improvement within the department.
- To support, facilitate and monitor the progress of the department including maintaining development plans to ensure they make a significant contribution to the School Improvement Plan.
- Use data and other information to inform strategic planning, to identify improvement targets, and to inform the School's leadership.
- Develop and implement policies and practices for the subject that reflects the School's commitment to high achievement.
- Evaluate the effects of the department's work on standards of learning and teaching.
- Identify areas of development for the provision of innovative literacy for all activities
- To review and report, as required, on the standard of leadership, teaching and learning in the designated subject consistent with the procedures in the school self-evaluation policy.

Job Description

- Promote links and co-operation with other faculties.
- Actively participate and encourage subject involvement in School wide initiatives and in the development of the whole School policy.
- To support and assist subject teachers with the behaviour management of their students.
- To intervene with the behaviour for learning strategies as required.
- To follow agreed School protocol regarding the tracking and monitoring of rewards and sanctions.

Working Time:

The following is extracted from the School Teachers' Pay and Conditions Document.

- *A teacher employed full-time shall be available for work for 195 days in any school year, of which 190 days shall be days which they may be required to teach pupils in addition to carrying out other duties; and those 195 days will be specified by the head teacher.*
- *Such a teacher shall be available to perform duties at such times and such places as may be specified by the head teacher for 1265 hours in any school year, those hours to be allocated reasonably throughout those days in the school year on which they are required to be available for work.*
- *Such a teacher shall work such additional hours as may be needed to enable them to discharge effectively their professional duties, including, in particular, the marking of pupils' work, the writing of reports on pupils and the preparation of lessons, teaching materials and teaching programmes. The amount of time required for this purpose beyond the 1265 hours and the time outside the 1265 specified hours at which duties shall be performed shall not be defined by the governors but shall depend upon the work needed to discharge the teacher's duties.*

A summary of the directed time for teachers as allocated by the Headteacher is detailed in the staff handbook.

The Working Time Regulations 1998:

All teachers are subject to the EU Working Time Regulations which are described in paragraph 114 of DfEE Circular No. 12/99.

The duties / responsibilities of this post may vary from time to time according to the changing needs of the Trust services.

Person Specification

Qualifications	ESSENTIAL/ DESIRABLE
Qualified Teacher Status	E
A Degree	E
Experience	
Teaching of specialist subject across KS3 and KS4	E
Knowledge and Skills	
Knowledge of National Curriculum	E
Understanding of the issues surrounding the safeguarding of children and commitment to child welfare and safety	E
A good understanding of the importance of literacy and numeracy across the curriculum	E
A good understanding of how to assess pupil progress	E
A good understanding of how to plan and assess work for vulnerable groups, such as SEN pupils, pupil premium pupils and gifted and talented pupils	D
Personal Qualities	
Enthusiasm for your specialist subject	E
Ability to manage own workload	E
Ability to communicate positively with children	E
Ability to work supportively and collaboratively within a team	E
A commitment to own continuing professional development	E
Ability to reflect upon and improve your teaching practice	E



Working for The Turing School

Benefits

- Teachers Pension Scheme – with a generous employer contribution
- Employee Referral Recruitment Incentive
- Enhanced Maternity Pay
- Access to training and development
- Discounts with local and national retailers, cinemas and restaurants
- On-site Parking

Well-Being

- Employee Assistance Programme – Wellbeing and advice
- Cycle to Work scheme

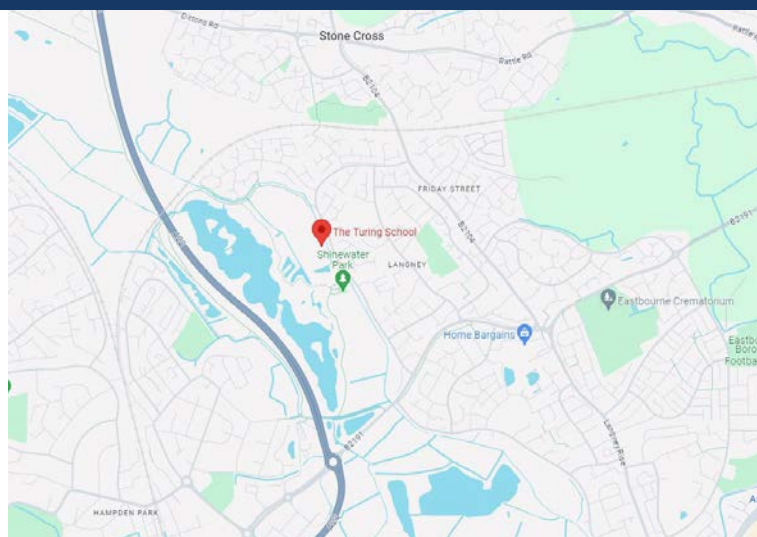
Finding Us

The Turing School
Larkspur Drive
Eastbourne
BN23 8EJ

01323 465700
tts-office@swale.at

Closest Train Station: Hampden Park Station
Approx. 33-minute walk or 30-minute Bus

Closest Bus stop:
The Causeway School - 1, 1A, 501, Loop





The Application Process

Applications will only be accepted from candidates completing the appropriate application form. All sections of the form which are applicable to you must be completed as clearly and fully as possible.

Please note CVs will not be accepted in place of a completed application form.

Application forms can be found on swale.at website. Completed forms can be sent to gemma.sorrellfleet@swale.at or by post to the following address:

Miss Gemma Sorrell-Fleet
The Turing School
Larkspur Drive,
Eastbourne
East Sussex
BN23 8EJ

The Shortlisting and Interview Process

After the closing date for this post a panel will conduct the shortlisting process. You will be selected for interview based entirely on the contents of your application form, it is therefore important that you fully read the Job Description and Person Specification prior to completing your form.

After the shortlisting process has been completed candidates who have been selected for interview will be informed, and provided with full details of the interview programme. If you have not heard from us within 10 working days of the closing date for this post, you have, on this occasion, unfortunately been unsuccessful.

All candidates who are invited to interview must bring the following original documents:

- Documentary evidence of right to work in the UK
- Visual identification which includes a photograph, usually a passport or driving licence
- Documentary proof of current name and address
- Where appropriate any documentation evidencing change of name
- Certificates of educational or professional qualifications that are necessary or relevant for the post

Conditional Offer

Any offer of employment will be conditional upon a number of formalities, including, but not restricted to the following:

- Verification of right to work in the UK
- Receipt of two satisfactory references
- Verification of identity checks and qualifications
- Satisfactory enhanced DBS check, as well as additional checks that may be appropriate if you have worked or been resident overseas in the previous five years
- Satisfactory pre-employment health clearance
- A check against the Teacher Service Register for any teaching prohibition or restriction orders where you are applying for a teaching role or if you have previously held a teaching role in past employment.



Safeguarding

Our Trust has robust safer recruitment procedures to help prevent unsuitable people from working with children.

All individuals working in any capacity at our Trust will be subjected to safeguarding checks in line with the statutory guidance Keeping Children Safe in Education.

Retention of information

All information is stored securely and any information supplied by unsuccessful candidates will be destroyed through the confidential waste system after six months from the date of the interview, in accordance with our retention of records procedure.

Privacy Notice

Please refer to the Trust's [Privacy Notice](#) for job applicants for information about how we use any personal data about them we hold.

Swale Academies Trust is committed to fostering a diverse and inclusive workplace where everyone feels valued and respected. We actively seek applications from individuals from all backgrounds and experiences.

Overview of Swale Academies Trust

Since its creation in September 2010, Swale Academies Trust has developed into one of the South East's leading Multi-Academy Trusts.

Our purpose is to develop good and outstanding schools and ensure the rapid improvement of schools with challenges.

As the Trust has grown and developed, we continue to ensure that effective school support and leadership is maintained. The Trust's approach to school improvement is based on a combination of CPD, capacity building and collaboration, with a relentless focus on teaching and pupil progress, in order to effect rapid and sustained improvements in outcomes for young people.

The Trust is an organisation which is driven by the belief that all children deserve a good quality education where they are seen as individuals and above all are exceptionally well cared for.

Swale Academies Trust - Schools

Primary

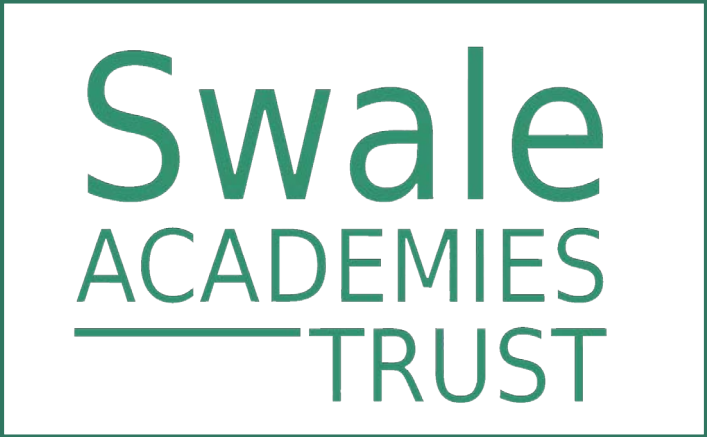
- Beaver Green Primary School, Ashford
- Istead Rise Primary School, Istead Rise
- James Dixon Primary School, Bromley
- Langney Primary Academy, Eastbourne
- Parkland Infant School, Eastbourne
- Parkland Junior School, Eastbourne
- Regis Manor Primary School, Sittingbourne
- Shinewater Primary School, Eastbourne
- South Borough Primary School, Maidstone
- Westlands Primary School, Sittingbourne

Secondary

- Meopham Secondary School, Meopham
- Peacehaven Community School, Peacehaven
- The Eastbourne Academy, Eastbourne
- The Holmesdale School, Snodland
- The North School, Ashford
- The Sittingbourne School, Sittingbourne
- The Turing School, Eastbourne
- The Whitstable School, Whitstable
- Westlands Secondary School, Sittingbourne

Central Support Services

- Human Resource Team
- Finance Team
- ICT Team
- Estate Management
- Governance and Communications



SWALE ACADEMIES TRUST, ASHDOWN HOUSE, JOHNSON ROAD, SITTINGBOURNE, KENT, ME10 1JS
Registered in England & Wales, COMPANY NUMBER: 07344732