

# Lipson Co-operative Academy

## English Teacher

If you want to join us in a school that aims to be truly great, you will need to share our passion for wanting to improve the life chances of the children who live within the community we serve

Martin Brook  
Headteacher



# TABLE OF CONTENTS

• Key Details	1
• How to Apply	1
• About Lipson	2
• A Warm Welcome from our CEO	3
• Job Description	4
• Person Specification	5
• #lifeattedwragg	6
• The Ted Wragg Institute	7
• Our Ted Wragg Standard	8
• Our Benefits	9
• Our Trust Journey	10





# Key Details

Salary

UPS/MPS

Location

Lipson Academy

Hours

Full time

Interviews

Monday 29<sup>th</sup>  
September  
2025

Closing date

Monday 22<sup>nd</sup>  
September 2025

Required from

January 2026



## How to apply

For an informal conversation about the position please contact Amy Humphries, Business Lead at 01752 671318 or [hr@lipson.plymouth.sch.uk](mailto:hr@lipson.plymouth.sch.uk)  
An application pack can be found at <https://www.tedwraggtrust.co.uk/vacancy> or click on the apply now button



The Ted Wragg Trust is committed to safeguarding and promoting the welfare of children and expects all staff and volunteers to share this commitment. All offers of employment are subject to an Enhanced DBS check.



# About Lipson Co-operative Academy



Welcome to Lipson Co-operative Academy, a school at the heart of its community trying to ensure that every single student is given the best possible opportunity to reach their true potential. We put culture first and believe that everything else follows.

At Lipson, we like to do things a bit differently. Kindness is at the heart of everything we do so therefore the relationships between our people at all levels are crucial.

Lots of schools talk about the importance of this, but, for us, it is the foundation upon which everything we do is built. In the classroom and around the school, it is the quality of the relationships between our staff and our students that underpins every aspect of our work.

If you join us, you are not just joining a school; you become part of a family. It is a place where everyone is valued and known as an individual. Staff wellbeing is an integral part of our ethos and we are not afraid to say no to the latest initiative or gimmick if we do not think that it will add value to what we are already doing.

Our core purpose is to raise levels of student achievement and we will only put our efforts into anything that we believe will have a positive impact on this simple mantra. However, Lipson is also about working together and we aim to create an environment where students and staff can have fun, be valued and thrive.

We want our students to be confident, well rounded individuals who are fully prepared and able to play a full role in the world in which they live. It is important that they leave Lipson with the necessary skills and qualities required to make a contribution to society, but it is also vital that they leave us with the necessary qualifications to earn their way in the world.

Our students are fantastic young people and they are rightly very proud of their school. Our role is quite simple. It is to do everything we can to enable the teachers here to teach to the very best of their ability so that our students can learn to the best of theirs. We think we are on to something special here at Lipson; come and join us and be the one that makes the difference.

We warmly invite you to visit We warmly invite you to visit our school to experience for yourself its unique atmosphere and see the outstanding opportunities we offer our students.



Martin Brook Headteacher

# A Warm Welcome from our CEO



An ambitious and inclusive Trust of schools strengthening our communities through excellent education.



**Moira Marder, OBE**

On behalf of the Ted Wragg Trust, I would like to thank you for your interest in working for our Trust. This is an excellent opportunity to join our Trust and work in one of our 17 schools.

In our **ambitious** and **inclusive** Trust of schools we know that every individual is critical to help us to achieve our collective mission to **transform lives, strengthen communities** and **make the world a better place**.

Our values driven, growing 2-18 Trust, has the highest expectations for every child, every day, with social justice at our core. In this pack you will find out more about how we **support, develop** and **grow our Headteachers**.



This is a hugely exciting time for our Trust as we continue to grow, embed, improve and innovate to **improve the life chances of all children** in the South West.

We demonstrate our love through our values

How we will succeed



# Job Description

**Key purpose of the role** Enable the Trust to realise its mission to ‘Transform lives, strengthen communities and make the world a better place by providing high calibre teaching and learning environment, challenging the educational and social disadvantage in the South West.

## Your responsibilities

- Live our mission and values every day
- Promote safeguarding policies and procedures to protect students maintaining a culture in which students are protected and achieve the best outcomes
- Meet Teachers’ Standards and pursue continuous professional development
- Prepare, deliver, and review effective lessons in accordance with schemes of work and our Trust learning model
- Reflect on your own lessons, curriculum resources and interactions with all students and stakeholders to find areas for continued improvement
- Use adaptive teaching to meet diverse student needs and maximize potential
- Foster a positive, safe, and inclusive classroom environment, ensuring that your work is equitable and values the diversity and experience of the whole school community
- Implement strategies for high standards of behaviour and attendance
- Complete assessment, recording and reporting procedures.
- Participate in great management meetings, coaching, and external quality assurance.
- Participate in at least fortnightly coaching
- Fully understand and implement all exam requirements
- Support students with pastoral responsibilities and enrichment activities
- Carry out any other reasonable duties as requested by Headteacher or Line Manager

## Your key objectives To support students to:

- Love coming to school
- Achieve well
- Live a life of opportunity

## To support colleagues to:

- Love coming to work
- Build high quality professional relationships with Trust networks
- Inspire others

## To support communities to:

- Love our schools
- Value working together
- Make the world a better place



# Person Specification

• Qualified Teacher Status	Essential
• Good honours degree	Essential
• Further CPD or relevant qualifications	Desirable
• Strong teaching ability – demonstrated through previous experiences	Essential
• Track record of excellent outcomes	Desirable
• Working in areas or school communities with high levels of SEND and/or deprivation	Desirable
• Able to fulfil all aspects of the role with confidence and fluency in English	Essential
• Excellent subject and relevant curriculum knowledge	Essential
• Meeting and effectively delivery of all the teaching standards.	Essential
• Effective use of formative assessment	Essential
• Adaptive teaching that challenges and supports all students	Essential
• Ability to receive and act on feedback	Essential
• Commitment to safeguarding	Essential
• Desire to develop yourself	Essential
• <b>Ambitious:</b> you work hard, have the highest standards and are positive for the future	Essential
• <b>Selfless:</b> you are self-aware, emotionally intelligent and are able to support yourself and others to thrive. You work selflessly to support the Trust's mission and strategic priorities	Essential
• <b>Collaborative:</b> you build strong relationships and networks	Essential

- Ambitious: works hard, has the highest standards and is positive for the future
- Selfless: self-aware and emotionally intelligent to support self and others to thrive
- Collaborative: builds strong relationships and networks



# #lifeattedwragg

We know that our people are our **greatest asset** and research tells us that happiness at work is directly linked to student happiness and consequently **student outcomes**.

We are working hard to make sure that all our employees **love coming to work**.



Our Trust is dedicated to fostering an environment where employees can **reach their full potential, with dignity, respect, and equal opportunities for all**.

We value the unique contributions of each individual, recognising that **diversity strengthens our community and makes our Trust a positive place to work and grow**.

We are committed to excellent employment practices that attract and retain talent from a variety of backgrounds and communities.

The aim of our people strategy is to be the **greatest place to work in the South West**.

We know that to realise our ambitious aim we must **welcome, retain and develop our great people** who work day in day out to **transform the lives of the children in our Trust**.



#lifeattedwragg is focussed on ensuring all our employees:

- **Love coming to work** and have a strong sense of belonging
- **Experience high quality development** through our dedicated development curriculums delivered by the Ted Wragg Institute
- **Inspire others** with their open and collaborative approach

To find out more about what it is like to work at the Ted Wragg Trust, explore our development curriculums and hear from our employees please visit our website at [www.tedwraggtrust.co.uk/workwithus](http://www.tedwraggtrust.co.uk/workwithus)





# The Ted Wragg Institute



We want to ensure that our people feel **invested** and **fulfilled in their role** by providing personalised, relevant and engaging professional development. Our brand-new **Ted Wragg Institute** (TWI) delivers our **high-quality development** offer for all, across our family of schools.

Our incredible offer includes Trust CDP, Leadership Development, Networks, Cohort-specific training and NPQs. Take a look at our offer this year here.

## Early Career Teachers

If you are an Early Career Teacher you will benefit from our tailored Early Career Framework combining weekly instructional coaching, asynchronous independent learning, online 'clinics' and in-person conferences. With a dedicated mentor or coach and access to supportive networks the ECTs in our Trust are supported and developed to reach their full potential.

## Our professional development delivery model

Our professional development delivery is underpinned by our Education key concept (see page 8). We believe that professional development should build knowledge, motivate, develop techniques and embed practice.

At the Ted Wragg Trust, we are research informed and believe that it is important that everyone involved in sharing ideas understands the underlying rationale and evidence base. We ensure that professional development is:



### Sustained

Frequency is critical,  
not time span



### Practice-Based

Create new habits



### Domain-Specific

Create new habits



### External Expertise

Challenge the familiar  
& refresh ideas



### Professional Buy-In

Purpose & benefits  
eclipse volunteering

We believe this slightly adapted model from 'Teaching Walkthrus 2', Tom Sherrington and Oliver Caviglioli is applicable to all professional development and will underpin the delivery of all our professional development networks, seminars and webinars.



# Our Ted Wragg Standard



Our Ted Wragg Standard provides a **minimum set of high standards** across all our schools to establish clear structures, implement effective processes and hold each other to account **to enable excellence**. It is based on our three key concepts: Leadership, Education and Every Child Succeeds.

## Key Concept: Leadership



We believe that great leadership:



Fiercely educates



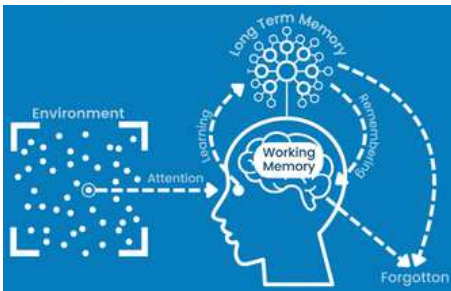
Thrives in a complex system



Is locally enabled

## Key Concept: Education

We have a clearly defined and articulated learning model that is understood by all teaching staff. This model of the learning process uses the concepts of Working Memory and Long-Term Memory. It draws on ideas from Cognitive Load Theory and the work of Daniel Willingham.

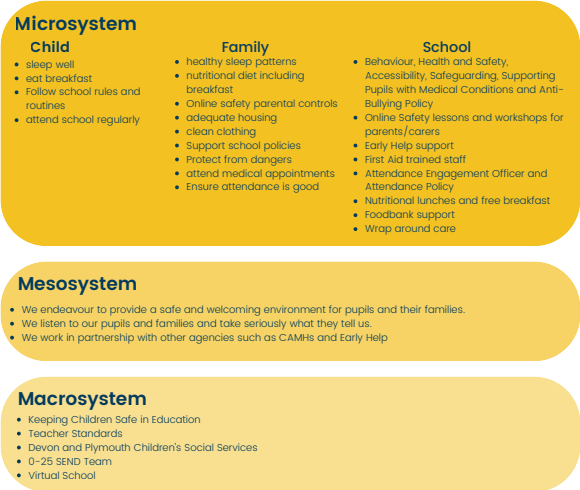


## Key Concept: Every Child Succeeds



We believe individual development is well explained using Maslow; that an individual grows in an ecosystem and can be interpreted using Bronfenbrenner's work, and that we are interdependent.

We believe that to enable our children to live a life of opportunity, we need to understand what true inclusion means. To us, our model is based on Maslow's hierarchy of needs and the Bronfenbrenner's ecology of inclusive education.



# Our Benefits

A critical part of our People Strategy is to ensure that we welcome and retain our great employees and ensure that they are supported both at home and at work.

When you join our Ted Wragg family we are here for you every step of the way. Here are some of the benefits we offer:



Exceptional development and networking opportunities



Cost of blue light cards can be claimed through expenses



Free annual flu jab, eye test and allowance for glasses



Exclusive discounts, cashback and vouchers



Free, confidential employee helpline. Available 24-7 through Health Assured



Access to Wisdom app to support your mental health



Up to 10% off all Pure Gyms



up to the value of £2,000.



Up to 2 days paid emergency time off for dependants



Generous public sector pension schemes for all staff



Timetabled instructional coaching for all teachers



Family friendly policies and flexible working opportunities

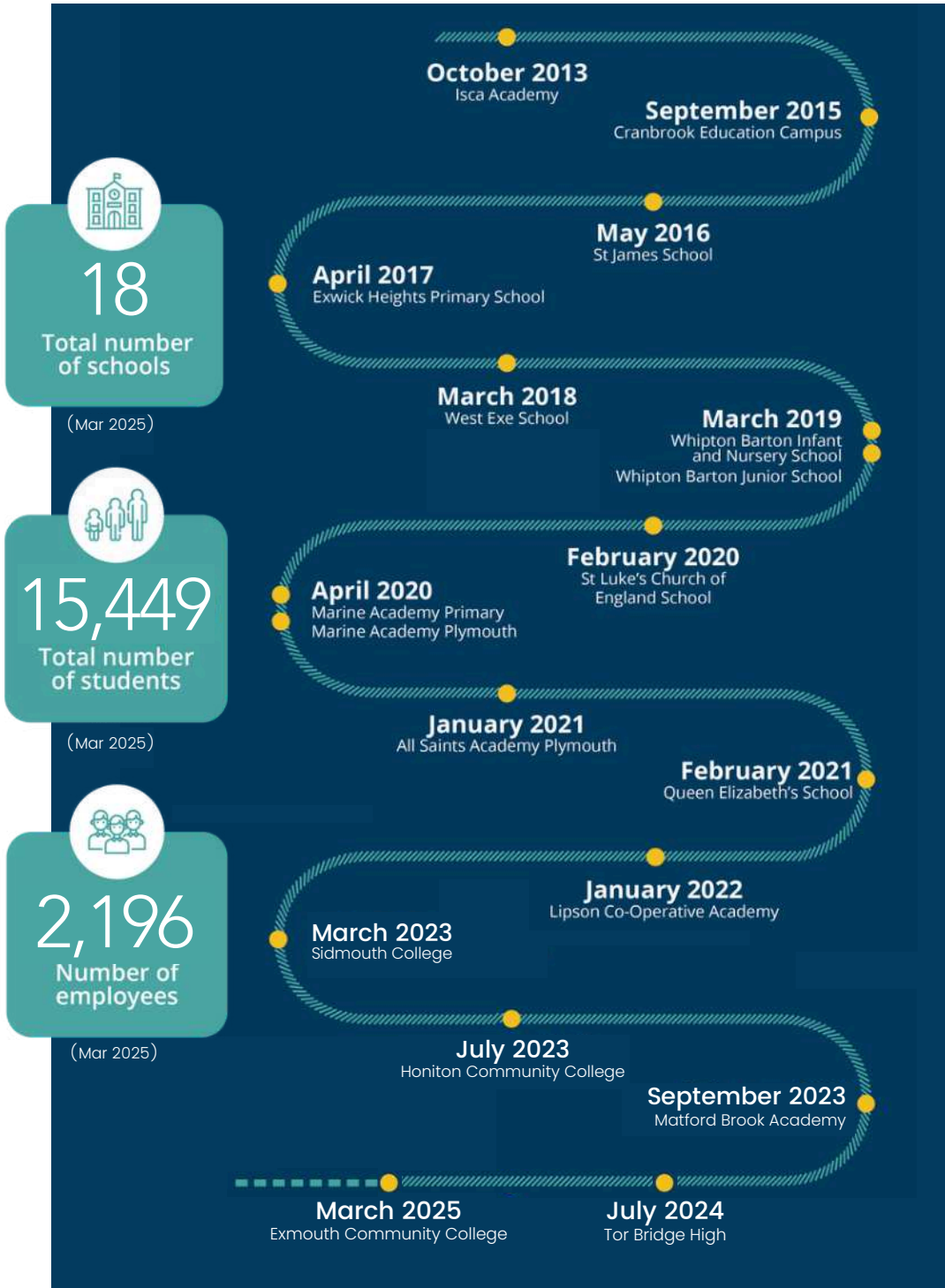




# Our Trust Journey



Professor Ted Wragg, in whose memory the Ted Wragg Trust is named, was passionate about how education can transform young people's futures.



# Thank you for your interest in working for us!

