



Opportunity to join an 'Outstanding' all-through academy

PE TEACHER (Maternity Temp)

Candidate Information Pack

Dear Candidate

We are looking to recruit a talented and inspiring PE teacher who is committed to helping our students fulfil their potential.

We are very proud of our reputation for academic excellence and the superb pastoral care our students receive along with the support we provide for the less academically able. We now want your help to enable us to go beyond outstanding and achieve 'excellence for all'.

The PE department is well resourced and fully staffed. We deliver a broad and balanced curriculum across each Key Stage. Physical Education is valued highly at Ark Academy and we also deliver both GCSE and A-Level PE. The PE Department take particular pride in the success of the after-school enrichment programme which is fundamental to our pupils educational journey.

The Academy has an excellent record of support for professional development and there is a comprehensive programme of support for NQTs

To apply, follow the link at <https://arkacademy.org/vacancies> by **9:00am on Monday 3 May 2021**. For an informal, conversation about the role, please contact k.gallagher@arkacademy.org Head of PE.

We wish you the best with your application

Delia Smith OBE
Principal



Ark Academy

The Principal

Delia Smith is the founding principal of Ark Academy. Previously she was the headteacher of St Angela's Ursuline School in Forest Gate for 16 years. She has also been a schools' inspector and was awarded an OBE for services to education.

About Ark Academy

We are a non-selective school specialising in **mathematics** and **citizenship** that serves children of all abilities. Our commitment is to know every pupil as an individual, and to foster the principles of team spirit, responsibility and care for others. Our pupils enjoy both a nurturing environment and the social benefits of a small school and the range and resources of a large, well equipped academy.

Facilities

Our buildings were designed by award winning architects Studio E (who created the successful design for City of London Academy in Southwark) and are organised to support calm and ordered learning. Pupils have access to specialist indoor and outdoor sports facilities, excellent science and ICT facilities, music, Design and Technology, art and drama studios and a 150 sqm, well-stocked and up-to-date library as well as inviting and well-equipped classrooms



About ARK Schools

ARK Schools is an education charity set up in 2004 to create a network of high achieving, non-selective, inner city schools where all pupils, regardless of their background or prior attainment, achieve highly enough by age 18 to have real choices: to go on to university or the career of their choice. ARK Schools has no faith affiliations.

All the ARK schools are situated in areas of high deprivation or educational need and our pupil profile reflects this: over half of our pupils are eligible for free school meals compared to 18% nationally.

The ARK network operates 39 schools in the UK across London, Portsmouth, Birmingham and Hastings. Each of our schools has its own distinctive character, reflecting its local community.

Girls PE Teacher (Maternity Temp)

Job Description: Teacher of PE

Reports to: Head of Department

Start date: June 2021

Salary: AMS

The Role

To deliver outstanding teaching, to ensure effective student learning in the subject and to facilitate excellent outcomes for the students

To be a role-model and impact positively on the academy more widely

Key responsibilities

- To plan, resource and deliver imaginative, interactive and inspiring lessons that ensure that effective learning takes place and students make excellent progress
- To provide a nurturing and stimulating classroom and academy environment that helps students to develop as learners
- To maintain/establish positive behaviour for learning across the whole academy
- To contribute to the effective working of the academy
- To support students in the acquisition and development of learning dispositions and positive character traits
- To provide stimulating and enriching extra-curricular opportunities for students and potentially for members of the wider school community
- To be accountable for student progress and attainment levels in their own classes.

Outcomes and activities

Teaching and Learning

- With direction from the Head of Department, to plan and prepare effective teaching modules and lessons
- To teach engaging and effective lessons that motivate, inspire and involve students and improve student attainment
- To use regular assessments to monitor progress and set targets
- To respond accordingly to the results of such monitoring to differentiate intervention
- To utilise a full range of AfL strategies
- To maintain regular and productive communication with parents, to report on progress, sanctions and achievements
- To promote reading and teach literacy skills.

Academy Culture

- To help create a strong academy community, characterised by consistent, orderly behaviour and caring, respectful relationships by maintaining a presence around the Academy
- To help develop an Academy culture and ethos that is utterly committed to achievement
- To demonstrate a commitment to equality of opportunity for all members of the Academy's community
- To actively promote the Academy at all times
- To contribute to discussions at meetings

- To contribute to the writing and implementation of the Academy Improvement Plan
- To be active in issues of student welfare and support.

Other

- To undertake other various responsibilities as directed by the Head of Department or Principal
- To undertake the main professional duties of a teacher as set out in the ARK Schools pay and conditions of service document
- To meet the expectations of all Ark Academy staff as laid out in the Staff Expectations Policy
- To uphold all Academy policies with consistency and diligence.

This job description is not an exhaustive list and you will be expected to carry out any other reasonable tasks as directed by your line manager.

Person Specification: PE Teacher

Qualification Criteria

- Qualified to degree level and above
- Qualified to teach (and work) in the UK.

Knowledge

- Up to date knowledge in the curriculum area
- Understanding of the strategies needed to establish consistently high aspirations and standards of results and behaviour.

Experience

- Experience of raising attainment in a challenging classroom environment
- Evidence of continually improving the teaching and learning of their subject through schemes of work and extra-curricular activities.

Behaviours

- Passion for the subject
- High expectations for accountability and consistency
- Vision aligned with ARK's high aspirations, high expectations of self and others
- A firm and constant belief in the unlimited potential of every student and a commitment to inclusive educational provision
- Motivation to continually improve standards and achieve excellence
- Commitment to the safeguarding and welfare of all students and providing equality of opportunity
- The ability to enthuse and inspire others
- The ability to consistently deliver outstanding lessons
- Effective and systematic behaviour management, with clear boundaries, sanctions, praise and recognition
- Excellent communication, planning and organisational skills
- Demonstrates resilience, motivation and commitment to driving up standards of achievement
- Acts as a role model to staff and students

- Commitment to regular and on-going professional development and training to establish outstanding classroom practice
- The ability to develop positive relations with students and adults
- The ability to work effectively alone and as a part of a team
- Excellent listening skills
- Strong interpersonal, written and oral communication skills and ICT skills
- Strong organisational and time management skills
- The ability to take personal responsibility, a readiness to reflect and self-evaluate, and the ability to change, develop and improve
- Confidence and self-motivation
- The ability to work well under pressure
- High levels of honesty and integrity
- A sense of humour and desire to have fun.

Other

- This post is subject to an enhanced Disclosure & Barring Service check
- The post holder must be committed to safeguarding the welfare of children and to providing equality of opportunity.

This post is covered by Part 7 of the Immigration Act (2016) and therefore the ability to speak fluent English is an essential requirement for the role.

Ark is committed to safeguarding and promoting the welfare of children and young people in our academies. In order to meet this responsibility, we follow a rigorous selection process. This process is outlined [here](#), but can be provided in more detail if requested. All successful candidates will be subject to an enhanced Disclosure and Barring Service check.

About the PE Department at Ark Academy

The Physical Education Department are a successful and innovative team that consists of 6 members. The department have worked passionately to design a broad and balanced curriculum for our students.

Physical Education is highly valued across Ark Academy which demonstrates the dedication and commitment of our PE team who deliver an enriched curriculum. Our Key Stage 3 curriculum is well established, and we strive to develop this further and adapt where necessary.

Ark Academy are proud to deliver both GCSE and A-Level PE in line with the AQA exam board with great success. We have extremely high standards to help maintain the high levels of attainment each year. Although candidates would not be expected to deliver either of these courses, we feel it is important to share the depth of our subject across the school.

Each member of our department takes pride in delivering a wide range of extra-curricular activities after school. These include [but are not limited to] basketball, netball, football, badminton, rounders, volleyball and cricket. We also provide pupils the opportunity to request extra-curricular opportunities of their choice and feel it is crucial for pupils to have an input in our extensive extra-curricular programme. Our department are continuously working together to drive our enrichment programme forward and maximise participation.

We also take part in regular house and inter school competitions. These have recently been affected by Covid-19, but we now strive to return to these safely and look forward to watching our pupils flourish in this competitive and fun field.



The DNA of Ark Academy

ARK ACADEMY MISSION STATEMENT

Ark Academy has at its core the pursuit of highest standards possible in education. We believe in high aspirations, high motivation and high achievement for all. Through our extended curriculum and community life we seek to meet the needs of the whole person. Civitas – Citizenship – is at our core. We will build a community of civic pride and social justice in which all members are equally valued. We are committed to the service of young people and to helping them play their full part in society.

In light of this we aim to:

- *Provide every student with the knowledge, skills, self-belief and motivation to be successful in their learning and lives*
- *Welcome, value and respect all who come to the school*
- *Build a community based on justice and a sense of personal responsibility*
- *Provide opportunities for all to experience CIVITAS whilst developing a spirit of tolerance and understanding for all cultures, traditions and faiths*
- *Promote dialogue and co-operation with the wider community*

Our Driving Principles are:

- ***Excellence***
- ***Citizenship***
- ***Participation***
- ***Persistence***

Our goal

Our goal is that all students should be able to access higher education and participate fully in our democratic society.

The DNA of Ark Academy

Is based on the six pillars of Ark Schools and developed into our own unique 'feel' generated by a genuine buy in for our core values. Our values are also underpinned by our habits and 'the way we do things around here'. We believe that in Ark Academy the following principles are tangible and central to achieving our mission from reception through to Year 13.

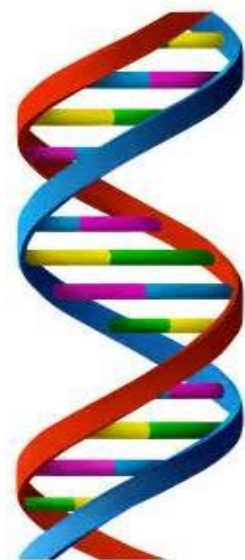


1. High Expectations

Students will develop the characteristics that support their academic achievement and will become thoughtful citizens who make good choices in their lives. We set very high expectations for all our pupils, whatever their starting point. We believe every child can realise their potential with the right teaching and support. Progress, from every starting point matters to us. We want every child at Ark Academy to do well enough by the age of 18 to go to university or pursue a career of their choice. We ensure that our pupils understand the wide variety of opportunities and pathways that are available to them.

We hold high expectations for all our pupils. Nothing is as important as the work we do to impact on the learning and lives of our students. Pupils understand the opportunities Ark Academy offers them and that we will do whatever it takes to help students achieve their goals. High expectations and the drive for strong outcomes permeate the school. Pupils and teachers

understand that qualifications are the key and we are unapologetic in our pursuit of this. Our teachers are relentless in their efforts and know that co-planning, coaching and forensic assessment are key to the success of our students. We take every opportunity through our extended curriculum and community engagement to ensure that our students grow and develop as well rounded, passionate and curious citizens. We know that children need to think deeply and more broadly about the world around them. We commit to ensuring every child enjoys a range of experiences that develops their social capital and develop their knowledge and their development as citizens in a democratic society. We ensure this through a variety of opportunities and programmes including our strong careers and enrichment programmes. Additionally we develop the learning habits that underpin academic success. Our students learn to think rigorously and creatively, read analytically, organise themselves, manage extended projects, debate and present themselves with confidence.



2. Excellent Teaching

Teaching and learning is the main thing. The promotion of high quality learning is at the heart of all our endeavours. We aim to inspire a future of passionate historians, mathematicians, scientists by delivering challenging and engaging lessons. Our teachers have excellent subject knowledge and are passionate about challenging each child to engage, stretch themselves and develop a love of learning. We use data intelligently to support our planning and ensure teaching is meeting the needs of students and improving outcomes.

Excellent teaching is underpinned by a clear view of pedagogy which promotes expert teaching. Through our lessons we **build student understanding** and work to ensure that knowledge is committed to the long term memory. Our teachers have a clear understanding of how the learning fits into the broader curriculum. We achieve this through curriculum planning which focuses on progression through the age-related curriculum. The concepts, knowledge and skills necessary to be successful are embedded at each stage so that students can successively access the curriculum as it becomes progressively more challenging.

We ensure consistency of provision and access to learning through our whole school commitment to co-planning. All lessons within a topic are delivered across the whole cohort. All teachers then adapt their plans to meet the learning needs of the class they are teaching but the key learning remains the same. We deliver our medium term plans through **Fertile Questions**. These knit together a sequence of lessons. The questions are thought provoking,

challenging and holistic. We know this approach engages pupils and helps them see the links between concepts and knowledge.

3. Exemplary Behaviour and strong ethos based on Civitas

There is a compelling and inclusive moral purpose which drives the school forward and is represented by and reflected throughout the school by our motto and core value 'Civitas'. All members of our community recognise the meaning and spirit of Civitas and that we strive to reflect it in our daily lives. We want all our pupils to enjoy school and develop enthusiasm for learning alongside an understanding of their future role in society. Effective management and clear consistent routines ensure that we maximise the time for learning and pupils are taught to be self-disciplined and self-regulating.



Ark Academy is a purposeful place of learning characterised by a respectful, orderly environment where teachers can focus on teaching and students on learning. We support one another and our students by the use of consistent routines. We are compassionately ruthless in ensuring that all students know and understand what is expected of them. Simply **consistency is king**. We know that routines are a team game and we share and implement practices and routines across the school, working as a team to give our students a consistent experience and create an excellent climate for learning. As a result, our students will know that routines help create an excellent school.

All our students and staff know that Civitas is about being a better human being and developing young community leaders with a passion for social action. We expect our students to develop as role models for those who follow them. We support civitas in a variety of ways but significantly through our relationships. Our reward system is based on the four core values of:

civitas, excellence, persistence and participation.

These permeate our school life and support our vibrant House System which supports team spirit, relationships and a positive school culture.

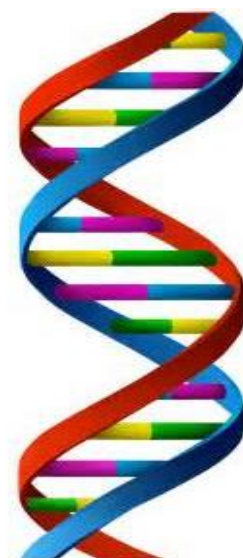
4. Depth for breadth

We prioritise depth for breadth. All pupils will secure firm foundation in English and mathematics and this underpins excellence in the other subjects. Our curriculum is rigorous and knowledge based which is reinforced by regular assessments that cumulatively build students' knowledge.

We offer a broad range of subjects from Early Years through to KS1, 2 and 3. At KS4 we offer academic pathways alongside a range of practical and creative subjects. In KS5 we offer academic pathways including a strength in enabling subjects at 'A' level as well as rigorous and challenging vocational pathways. All pathways and progression through the academy are based on high quality careers and pathway support through, our whole school Ambitions Programme.

Our curriculum is planned backwards in each subject with big ideas (**fertile questions**) underpinning each area of academic study and building year on year ensuring progressively harder concepts are mastered. More time for English and maths is identified where it is most needed to help pupils catch up.

Our assessments, three times a year, cumulatively test students learning over the year. Revision is built into the curriculum to support our students' progressive understanding of how to learn independently. We place great emphasis on our **review week** which takes place after each formal assessment. This enables us to re-teach key aspects and students to fix areas of misconception. This is a key component of our feedback strategy. Alongside high stakes testing, all departments implement a variety of formative assessment and quizzes to test and reinforce their learning and feedback into teaching.



5. Knowing Every Child

Ark Academy values the diversity and inclusivity of our school. We know it is important that every pupil knows they are well known by their teachers, so that every individual can flourish. In Ark Academy we explicitly develop through our core values and our unifying motto, Civitas, the character and habits which support pupils' academic and personal development. Our pastoral system ensures that every child has an adult who will listen to them. Positive relationships between students and adults reinforce a culture where children are safe and maintain excellent behaviour and commitment to learning.

Our pastoral teams and experienced support staff ensure that our pupils are known, understood and cared for. Our pastoral teams meet our parents three times a year and ensure they are aware of the progress and development of their child giving them the holistic view of their child's school life. We teach character education through our tutor and PSHE programme, reinforced by our assemblies. We support Civitas by the way we greet each other, talk to each other and take on responsibilities. Our positive approach in Ark Academy is supported by our rewards system based on our four core values, our tutor system and the house system.

Our teachers understand the most impactful intervention happens in the classroom knowing the class in front of you and ensuring their need is being met is our key commitment.

6. Always Learning in Ark Academy

We put professional development at the heart of what we do in Ark Academy. We are always learning. We are committed to identifying talent and nurturing individuals to create a community of exceptional teachers, highly skilled support staff, thoughtful managers and strategic leaders.

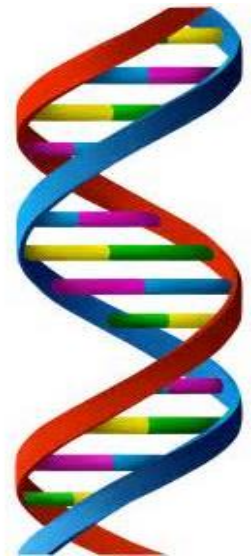
Excellent teaching is underpinned by high quality professional development which supports teacher progression. We are a community of learners. It is in our DNA to talk, observe, plan and reflect together.

Teaching is a craft we can always improve. We invest heavily in our provision of professional development. We know that this is the key to the development of our students and to us as educators. We also recognise that all teachers need their subject knowledge refreshing and developing.

We develop our knowledge and skills in Ark Academy in a variety of ways that link together to provide a wide range of opportunities to learn both on the job and from experts. Our teaching practice is developed through weekly mentoring, the weekly training programme, weekly co-planning meetings, through observation and feedback and, where possible, through co-teaching working alongside more experienced professionals.

Through our talk, training and observation we have a shared understanding and a common language that ensures the consistency of our agreed approach. We know the key conditions needed to create this community of learners are trust, risk-taking, collaboration, co-construction, common goals and shared values. All of these underpin our DNA.

Ark Academy learns its way forward, building in time for collective enquiry, reviewing evidence and continually striving for improvement. We evaluate our learning and support our staff to engage in evaluative, data-driven and strategic thinking related to their role. We also evaluate our learning at key assessment points, documented in **The Evaluation of Teaching and Learning (ETAL)**. This enables individual teachers, subjects/key stages and senior leaders to learn through analysis. We are committed to research and reviewing educational thinking as a learning community sharing articles and best practice through our weekly bulletin and blogs. We believe Ark Academy and



Ark Schools provides an excellent talent pipeline. As staff prepare to take on or commence new leadership positions within Ark we support them through ongoing training, coaching others, delivering training and leading co-planning.

As a member of both our region and Ark Schools we have regular opportunities to share practice and train together, attend joint monitoring visits or collaborate within our subject area. We are also a member of The Prince's Teaching Institute which supports the development of subject knowledge.

ARK ACADEMY SIXTH FORM MISSION STATEMENT

Ark Academy Sixth Form offers the highest quality education to allow our students to pursue the university pathway and career of their choice with confidence in a changing and challenging global community. Learning is at our core, we offer a first class education with a drive towards academic excellence and a desire to create independent learners ready to face university life. We believe in extending and enriching our students, both academically and socially, developing young community leaders with a passion for social action. Our students will develop as role models for those who follow them, they themselves inspiring future year groups of Ark academy Sixth Form. We work tirelessly to ensure our students are world ready, armed with the relevant skills, experiences and achievements to make them stand out from the crowd on application for university and future careers of their choice.

We will:

- *Deliver a first class learning environment based on outstanding teaching and facilities*
- *Provide all students with every opportunity to extend themselves and their thinking of the world in which they live; building a portfolio that will allow them to progress into top flight universities*
- *Challenge students to do better than good and always accept that there is always room for improvement*
- *Develop our students as young leaders and role models to act as inspiration for younger members of our community*
- *Welcome, value and respect all who come to the school*
- *Hold true to our 4 core values and strive to display them in all that we do*
 - *Excellence*
 - *Participation*
 - *Persistence*

ARK Safe Recruitment Procedure

ARK is committed to safeguarding and promoting the welfare of children and young people in its academies. In order to meet this responsibility, its academies follow a rigorous selection process to discourage and screen out unsuitable applicants.

Disclosures

This post is classified as having substantial access to children, and appointment is subject to an enhanced police check of previous criminal convictions (DBS). Applicants are required, before appointment, to disclose any conviction, caution or binding over including 'spent convictions' under the Rehabilitation of Offenders Act 1974 (Exemptions) Order 1975. Non-disclosure may lead to termination of employment. However, disclosure of a criminal background will not necessarily debar individuals from employment – this will depend upon the nature of the offence(s) and when they occurred.

Reference Checking

References from the previous and current employer will be taken up for shortlisted candidates, and where necessary employers may be contacted to gather further information

Probation

All new staff will be subject to a probation period of six months (which may, in certain circumstances, be extended by up to 10 weeks). The probation period is a trial period, to enable the assessment of an employee's suitability for the job for which they have been employed. It provides the academy with the opportunity to monitor and review the performance of new staff in relation to various areas, but also in terms of their commitment to safeguarding and relationships with pupils.

WHERE TO FIND US



Wembley Park (Jubilee/Metropolitan Line)



Chiltern Railways



Buses: 206, 245, 297, 83

By Car: A479

Postcode for satnav: HA9 9JP

A406 North Circular Road (15 minutes away)

Ark Academy Bridge Road London HA9 9JP

+44 (0)20 8385 4370

admin@arkacademy.org

www.arkacademy.org

