

**CHEW VALLEY SCHOOL**  
**Chew Magna, Nr Bristol BS40 8QB**



**APPOINTMENT OF**  
**HEAD OF BIOLOGY**  
**(MPS + TLR 2A: £3214)**

[from September 2024]

## Head of Biology

### HEAD OF BIOLOGY

This is a wonderful opportunity for an enthusiastic and driven Head of Biology to join our thriving and successful school, to assist us in achieving even greater success.

The school has been through change in recent years including joining the Lighthouse Schools Partnership (LSP) Multi Academy Trust alongside several of our feeder primary schools and Gordano, Backwell and Churchill secondary schools. Through this we are developing work of a mutually beneficial nature. We are also active members of the North Somerset Teaching Alliance (NSTA) Teaching School which affords many opportunities for our staff.

The school has a distinctive character and ethos which is unashamedly child-centred and emotionally intelligent in the way relationships are managed between staff, parents, students, and governors. The school has a House system at the heart of its culture with vertical tutoring as a key facilitator. There are four houses - Bilbie, Hauteville, Moreton and Rodney.

#### THE POST

We seek to appoint a highly driven full time Head of Biology to join our friendly, hard-working department with staff willing to give much time in support of one another.

Please visit the school website [www.chewvalleyschool.co.uk](http://www.chewvalleyschool.co.uk) for further information about the school including a visual prospectus which will I hope gives applicants a better understanding of the range of opportunities here for staff and students which makes school life so successful and enjoyable.

#### ACCOMMODATION

The department has a linked suite with laboratories plus prep room. The department is a friendly, hard-working one with staff willing to give much time in support of one another.

#### THE CURRICULUM

KS3 classes are mixed ability in Years 7 and 8, but all work schemes contain extension material for the more able and comprehensive support work for those with learning difficulties. Students are broadly set in year 9 with a small group in each half year being taught separately. Special Educational Needs students will have a support teacher for some lessons and action plans to assist in their development.

At KS4 students currently study the AQA GCSE syllabus in Combined Science (Trilogy). This is usually taught by three teachers and the groups are broadly setted into four 'Higher' groups and two 'Foundation'. In addition, as a result of end of KS3 exams approximately 60 students (i.e. two groups) are invited to complete a Triple Science course in Double Science curriculum time. These groups are taught by three specialist A-level teachers (Biology, Chemistry and Physics) and provide many of the students that appear in our A-level groups.

The GCSE courses generate very healthy numbers for Advanced level study in Biology, Chemistry and Physics. There are usually two groups which embark on Biology at A-level who follow the AQA specification.

## DIMENSIONS OF POST

### Core Purpose

The post-holder will:

- provide vision and leadership in the department, assisting the Head of Department to secure high quality teaching and the effective use of resources to bring about the highest standards of achievement for all pupils;
- take particular responsibility for the development, teaching and learning of Biology in the school.
- To take further, whole department, responsibility for an aspect of teaching and Learning (e.g. AFL, Gifted and Talented, ICT) to be decided after appointment depending on the successful candidate's skills and preferences.

### Role Description

#### Teaching:

The post-holder will:

- teach a timetable of approximately 41/50 periods;
- set high standards by example in classroom practice.

### Curriculum

In co-operation with the Head of Department the post-holder will:

- oversee Biology courses;
- ensure that schedules, schemes of work and syllabi are properly prepared;
- review and refine these to meet the needs of pupils as appropriate to age and ability;
- ensure that the requirements of the National Curriculum, National Strategies and examination boards are met;
- ensure that appropriate work is set for absent colleagues.

### Students

In co-operation with the Head of Department the post-holder will:

- help to organise grouping of pupils and ensure high standards of teaching and learning;
- manage assessment, monitoring and reports within the subject in line with school policies and procedures;
- ensure that special educational needs are met within the subject through effective liaison with the SENCO, LSAs and other staff;
- assure quality of teaching and preparation for examinations in the subject.

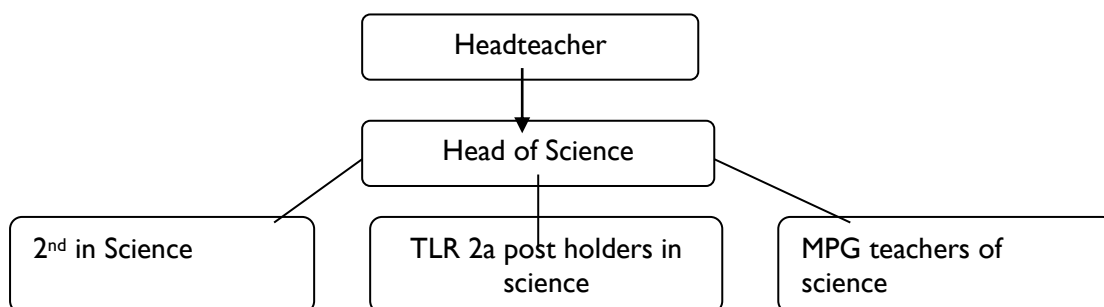
### As head of subject

The Head of Biology will provide support to the Head of Science by assisting with:

- keeping the work of the department under review by contributing to school evaluation processes;
- ensuring the teaching of A Level Biology is maintained at a high standard by overseeing teachers and technicians and monitoring teaching and learning;
- managing the resources of the department keeping appropriate records and inventories;
- managing processes of ordering, purchasing and maintaining resources;
- other responsibilities which the Head of Department reasonably delegates.

## Lines of Reporting

The post-holder will be responsible to the Head of Department.



### OTHER RESPONSIBILITIES

Teachers are expected to be Form Tutors and this is a most important part of our work. It involves having pastoral oversight of about 30 pupils in a vertical nature with each year in the main school represented; as well as the obvious duties of registration, record-keeping and other minor administrative matters, the Tutor is expected to keep a close eye on the pupils' well-being [happiness, integration in the community, behaviour, appearance, etc]. The Tutor is responsible to the Head of House and House Teams meet regularly to discuss matters concerning pupils in their House.

### PERSON SPECIFICATION

	ESSENTIAL	DESIRABLE
PHYSICAL	Good health and attendance records	
QUALIFICATIONS	Degree in Biology or other relevant subject Post Graduate Certificate in Education	Post Graduate Qualification which demonstrates breadth of knowledge, interest or experience.
EXPERIENCE	An outstanding practitioner teaching science to KS3, GCSE and A Level.	Evidence of leading initiatives at departmental or whole school level.
PERSONAL QUALITIES	Presence and confidence Warmth and sensitivity Enthusiasm, energy and a sense of humour  Outside interests which indicate a sense of proportion and balance	Willingness to work with others in curriculum development.  Willingness to share these interests and skills to develop the educational opportunities for our students
PERSONAL SKILLS	Good communication skills both orally and in writing Good interpersonal skills and ability to maintain good working relationships with pupils and	Good IT Skills  Evidence of effective leadership of teams

	colleagues  Good organisational skills  Proven ability to work as an effective team member	
--	--	--

An application form including a supporting letter of application should be completed via our eRecruitment system as soon as possible. The closing date for applications is **Monday 15<sup>th</sup> April at 9am**. It is anticipated that interviews will take place in the week commencing Monday 29<sup>th</sup> April.

Unfortunately it is not possible to acknowledge all applicants individually. Please accept my thanks for the interest that you have shown in this post.

Gareth Beynon  
March 2024