



Marlwood  
School



Marlwood  
School

Marlwood School

## Contact Us

Marlwood School,  
Vattingstone Lane,  
Alveston,  
South Gloucestershire  
BS35 3LA

T: 01454 862525

F: 01454 862550

E: [MarlwoodSchool@CSET.co.uk](mailto:MarlwoodSchool@CSET.co.uk)

[www.marlwood.com](http://www.marlwood.com)

Marlwood School is managed by  
the Castle School Education Trust;  
a company limited by guarantee.  
Registered in England.  
Company number: 8397975.

# A Very Warm Welcome

I am delighted to welcome you to Marlwood School; you will be joining the school at a very exciting time, as we launch into our 50th year. And what better way to celebrate this important milestone than with a fully refurbished building, with state of the art classrooms and facilities.



At the heart of everything we do is a real drive to provide a high-quality education in a supportive and inclusive environment. We are a smaller than average secondary school and that brings with it many benefits, not least our ability to get to know children quickly and understand their social, emotional and learning needs. As a school community, we aim to meet these needs and provide an educational experience that equips all pupils to achieve their personal best, whether in the classroom, on the sports field, or on stage. Whilst our core business is academic excellence in the classroom, we are also committed to character education and as such we aim to develop respectful, resilient and responsible pupils that are well prepared to serve their communities and live successfully in a diverse society.

We are very excited about the next chapter in the Marlwood journey. If you like what you see in the following pages and on our website and would like to come and learn more, please do contact us. We would be delighted to hear from you.

**Seema Purewal**  
Headteacher

## Castle School Education Trust

Marlwood School is a proud member of the Castle School Education Trust. CSET is a partnership of local primary and secondary schools which are committed to providing a great education for every child. The work of the Trust is based on a belief in collaborative working and partnership that will benefit all the children in our community. Since joining in 2014, Marlwood School has greatly benefited from the central services and expert educational and operational support provided by the Trust team.

**William Roberts**  
Chief Executive, CSET





# Our Values and Ethos

As well as being educators, teachers at Marlwood see a core part of their roles as developers of character. Our core values are chosen specifically to develop certain attributes in our pupils. In line with our vision statement, we aim to develop citizens of the future who are respectful, resilient and responsible. Pupils are awarded value points for displaying these key attributes in lessons and throughout their school week.



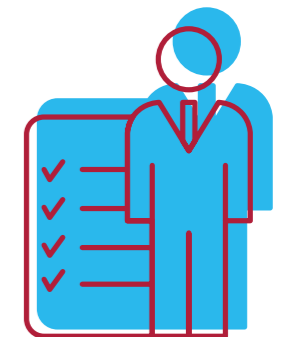
## Respectful:

Here at Marlwood all members of our school community are expected to treat each other in a kind and courteous manner, and this value is modelled in all our everyday interactions. We begin the school day and each lesson by greeting all students in a positive way, all instructions and requests are made by staff in a calm and reasonable manner and we expect students to comply respectfully. We are a school that celebrates diversity and we expect all pupils to respect all members of the school community, regardless of race, gender, social class. We encourage respect for our school environment, keeping litter to a minimum, clearing up after themselves and looking after school resources as if they were their own.



## Resilient:

We recognise that learning is not always an easy process and life can often present different challenges and setbacks. We therefore believe that encouraging pupils to develop perseverance and resilience is vital for success in today's world. Learning a new subject, skill, sport or musical instrument all require resilience at times and learning not to give up is an important habit that we aim to develop in our pupils.



## Responsible:

Teaching pupils to take responsibility for their actions is something we regularly emphasise here at Marlwood School. Attending school every day on time, in correct uniform and with correct equipment, ready to learn is where it all starts. Taking ownership of completing regular homework, responding to teacher feedback, catching up on missed work and preparing for assessments all require pupils to take responsibility for their learning – and is something we are keen to push as a school.

# The Marlwood Curriculum

We believe in breadth of curriculum: students learning a broad range of subjects for as long as possible. Students will receive a traditional curriculum, which is broad and balanced. The curriculum is designed to enable all students to flourish academically and acquire the knowledge, skills, employability competencies, cultural capital and character development required for a successful and fulfilled life.

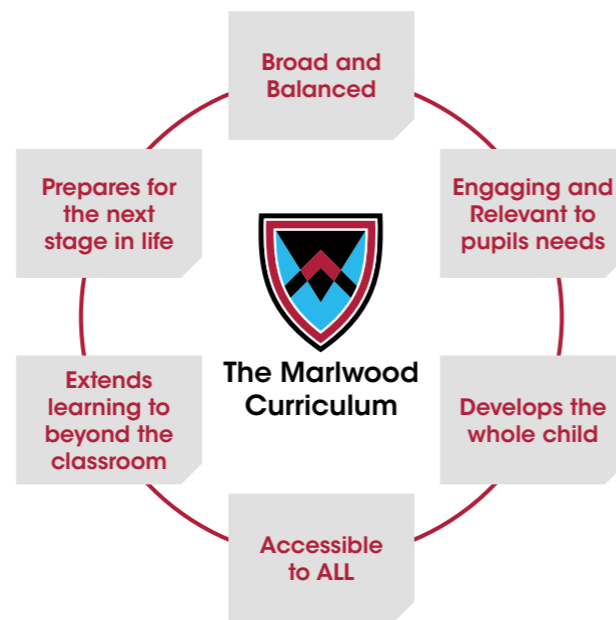
In Key Stage 3 (years 7-9), the curriculum is designed to build upon the knowledge, skills and understanding from primary schools and ultimately prepare the students for their GCSEs and vocational qualifications.

Throughout Key Stage 4 all students will continue with the essential core curriculum of English, Mathematics, Science, PE and Religious Education and nearly all students will continue to learn a Modern Foreign Language and a subject from the Humanities.

At Marlwood School we also greatly value the contribution that the Arts and creative subjects make to the curriculum.

“ Pupils study a wide range of subjects in years 7-9. Teachers give them good advice about which GCSE subjects to study.

Ofsted, December 2019





8

## Teaching & Learning

We aim to develop learners who are actively engaged in their learning and sit in the driving seat.

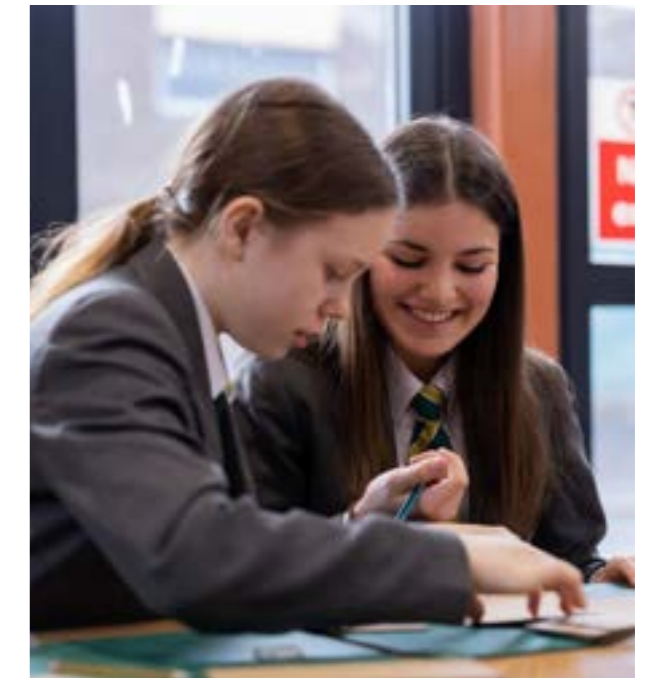
Here at Marlwood School, we have a fantastic team of dedicated teachers who are specialists in their chosen fields and many of whom have amassed great wealth of experience in passing on their knowledge, passion and skills to our young people. We are committed to seeing that all pupils get a high-quality consistent teaching and learning experience. To ensure this, we have carefully crafted 8 steps to excellence in teaching and learning that all staff commit to following in their everyday classroom practice.

Our newly refurbished classrooms and teaching spaces make for a purposeful and professional learning environment. Our pupils really enjoy their learning experience come to life as our teachers enthusiastically make use of our newly installed interactive whiteboards and new specialist equipment in Design and Technology and Science.

Our commitment to developing the expertise of our teaching staff is reflected in our investment in our own Lead Practitioner who works closely with our staff to hone their teaching skills. We are also very lucky to have the expertise of specialist leaders from the Trust who work regularly with us. Alongside this, our teaching staff benefit from the shared expertise of other teachers within our Trust schools, making for high quality training and development.

As a school, we are committed to ensuring that pupils with special educational needs and disabilities are catered for and are able to access the full curriculum. Our teaching staff are ably supported by our SENDCo to make necessary adaptations to their classroom practice. As a small school we can quickly identify any learning needs and act to support them.

But perhaps the most important thing is the warm relationships that our teachers forge with our pupils that make for an excellent Learning experience. This is often commented on by visitors to the school and also endorsed by Ofsted.



9

# Curriculum Enrichment

We enhance our curriculum by offering our students the opportunity to take part in a wide variety of extra-curricular activities during their time at Marlwood School.

We greatly value the experiences that our students gain from taking part in trips and visits and the time staff devote to making these possible. There are regular opportunities for students to undertake theatre visits, theme parks, trips abroad and much more.

Visiting speakers also enhance teaching and learning. There are popular trips and tours to various European destinations, including ski trips.

“ I was blown away by the whole production. The children are so talented and were just amazing! At the end when they were taking their bows I was honestly moved to tears.

Parent of Year 8



## Sport and Healthy lifestyle

As part of our educational offer, we aim to ensure our students understand the importance of keeping fit and healthy, both in body and mind. All students follow a weekly programme of Physical Education and Sport through to the end of Year 11. Students may also choose to specialise in the study of P.E as a GCSE option choice. This year we have expanded our KS4 offer to include a vocational Health and Fitness course for those wanting to pursue an alternative career in this field.

We are fortunate to have our own high quality AstroTurf pitch and vast sports fields which add to the quality of provision. We also engage in regular sports fixtures and competitions for girls and boys to allow them the opportunity to compete with other local South Gloucestershire Schools.

Despite being a smaller than average secondary school, we are very proud of our Performing Arts Faculty who regularly entertain us with their high-quality annual Christmas concerts, summer shows and musicals, which are a joy to watch.





## Care, Guidance & Support

Successful learning happens when students feel safe, happy, and listened to. We take the welfare of each child seriously because we recognise that emotional well-being is a prerequisites for good learning and high achievement.

“ Pupils behave well as they move around the school. They are respectful and have warm relationships with teachers. They feel teachers know them as individuals and care for them. ”

From the moment a child obtains a place at Marlwood School, the process of supporting them to become successful learners within a nurturing environment begins. On entering the school, all students are members of a tutor group and also one of our four houses. This marks the beginning of a strong bond with their form tutor who will maintain an overview of each child's personal development.

The form tutor is responsible for the pastoral care of each student and is supported in this role by our incredibly dedicated KS3 and 4 Engagement Leaders, who work hard to keep parents and carers informed about their child's conduct and well-being in the school.

We have a comprehensive suite of personal development activities, including carefully crafted theme-based assemblies a fully comprehensive PSHE programme and an opportunity for pupils to express their views through our School Council.

Our pupils take a very active role in helping the school address key issues, such as bullying and raising mental health awareness. We are very fortunate to have our very own Mental Health First Aider in school.



# Preparing for life after Marlwood

Our Careers Information Advice and Guidance Programme is second to none.

We have excellent relationships with local 6th Form schools and colleges. Whether pupils choose to go to the Sixth Form at our sister school - The Castle School in Thornbury, or one of our local colleges, such as SGS or Bradley Stoke 6th Form, we do our very best to ensure that pupils make informed choices.

Our Careers Information, Advice and Guidance programme ensures that our pupils have a broad understanding and meaningful encounters with the workplace. Year 10 pupils undertake a period of work experience in a variety of settings, which allows them to get a real feel for the workplace. Our excellent connections with the local employers and companies mean that our pupils get excellent engagement opportunities throughout their time with us, whether that be our annual careers fair, programme of visiting speakers or CV writing and interview practice.



## Find Us

