



Pathfinder

Multi Academy Trust

Providing an excellent education from age 2 to 19

Head of Mathematics

Archbishop Holgate's School - York

Required from: 1 September 2025

Closing date: Monday 19 May at 8.00am

Interview date: Wednesday 21 May



Archbishop Holgate's School

A Church of England Academy Founded 1546

We are seeking an outstanding and dynamic Head of Mathematics. The successful candidate will be a motivated educator with excellent subject knowledge, strong leadership skills, and a commitment to driving high standards of teaching and learning. They will inspire a love of Mathematics in all students, while nurturing and supporting them to achieve their full potential in their mathematical studies.

We believe that Archbishop Holgate's is 'no ordinary school' and is an excellent place to work, a view confirmed by Ofsted in our most recent inspection, "Staff are incredibly proud to work here."

Our staff are friendly and supportive and our students are polite, hardworking and keen to succeed. As such, this post represents an exciting opportunity to join a very successful, high-achieving, forward looking and fully-subscribed Church of England comprehensive, a school judged Outstanding in all areas by both Ofsted and SIAMS.

Successful candidates will be fully supported to develop in the role, benefiting from bespoke CPD opportunities both at Archbishop's and as part of the Pathfinder Teaching School Hub. In addition, colleagues will benefit from being part of the Pathfinder Multi Academy Trust Career Pathway Programme, and through working with colleagues across other Trust schools, develop skills and share innovative teaching and learning practices.

GRADE/SALARY

L6-10 (currently £56,316-£62,202)

CONTRACT

Full Time, Permanent

REPORTS TO

Deputy Head

HOW TO APPLY

To apply for this role, please submit a completed application form via post or email to:

Mrs J Sissons, Head's PA
Archbishop Holgate's School
Hull Road
York
YO10 5ZA

Email: jsissons@ahs.pmat.academy

ADDITIONAL INFORMATION

Pathfinder Multi Academy Trust is an equal opportunities employer, committed to safeguarding and promoting the welfare of children. Enhanced DBS check required. As part of our due diligence process, an online search will be conducted on all shortlisted candidates. These checks are carried out in accordance with Keeping Children Safe in Education (KCSIE) guidance to determine suitability to work with children and young people and keep them safe.



Pathfinder

Multi Academy Trust

About our School

'I have come that they may have life, and have it to the full.'

John 10:10

Archbishop Holgate's is a flourishing school signified by outstanding examination results, high-quality teaching and learning, an inspiring curriculum complemented by sporting and musical achievements and a wide, varied programme of extra-curricular opportunities. We are a school committed to ensuring that our students develop in all ways and at the heart of all we do is a commitment to 'Values, Care and Achievement':

Christian values that underpin all we do

Outstanding pastoral care that sees each student as an individual

Maximum achievement for all students, at all levels

We have excellent students and a talented staff, colleagues who are committed to ensuring that the young people in our care achieve and succeed. Collectively, as a school community, we seek to nurture aspiration and promote excellence. We enrich our students in many different ways and when they leave Archbishop Holgate's they do so as well-rounded young people with the skills, qualities and relevant qualifications to help them shape their own futures and also to benefit the communities they serve.

In 2021, the school was delighted to once again be awarded outstanding judgements in all areas of the Ofsted inspection. Over the last decade, Archbishop Holgate's has consistently enjoyed some of the best results nationally at both GCSE and Post 16.

At Key Stage 5, the Sixth Form has consistently performed in the top 5% of all Post 16 providers. The school also consistently performs significantly above the national averages for all groups of students at Key Stage 4. Over the past five years, the Progress 8 score has averaged almost +0.5 and over the same period disadvantaged students have on average performed as well as all students nationally.

Archbishop Holgate's regularly features within the top ten state schools in the north in the annual Sunday Times Parent Power Schools Guide.





Pathfinder

Multi Academy Trust

About our School



Extracts from the Ofsted report (October 2021):

"Leaders have established a culture of respect, dignity and inclusivity that allows every pupil to thrive."

"Pupils' behaviour is excellent. At all times, pupils are calm, orderly, and respectful."

"The school's personal development programme is comprehensive. Pupils experience a range of trips and visits to broaden their cultural horizons."

"The support provided for pupils with special educational needs and/or disabilities (SEND) is exceptionally strong."

"The Sixth Form curriculum is exceptionally strong."

"All staff feel valued. They refer to being part of a special community. Leaders proactively consider the workload and wellbeing of their staff."





Pathfinder

Multi Academy Trust

About our Trust

Providing an excellent education from age 2 to 19



Setting the course



Leading the way



Serving and inspiring

Formed in August 2016, Pathfinder is a successful, well-established Multi Academy Trust serving more than 6,200 children and their families across York and North Yorkshire.

We are a flourishing and supportive learning community. A partnership of like-minded Church and Community Schools, where a clear and ambitious vision of a high quality inclusive education **sets the course** and permeates across all areas of school life. Pathfinder has a proven track record of **leading the way**. We are a Trust with strong examination results, high quality teaching

and learning, an inspiring curriculum, excellent opportunities for personal development and a wide, varied programme of extra-curricular opportunities.

We understand that achievement comes in many different forms and work collectively to **serve and inspire**, nurturing aspiration and promoting excellence in all our students. We value the uniqueness and diversity of each of our schools, celebrating this distinctiveness and the contributions they make to the wider Pathfinder community.

Pathfinder schools



ACOMB PRIMARY SCHOOL



Archbishop Holgate's School

A Church of England Academy Founded 1546



Badger Hill
PRIMARY SCHOOL



Barlow CE Primary School

Part of the White Rose Federation - One family, branching out together



Burton Salmon CP School

Part of the White Rose Federation - One family, branching out together



Chapel Haddlesey CE School

Part of the White Rose Federation - One family, branching out together



Clifton with Rawcliffe



Hempland
Primary School



Heworth
Church of England Primary School



Huntington
PRIMARY ACADEMY



Malton School
A Specialist Science School



New Earswick
Primary School



Poppleton Road
Primary School



Rufforth
Primary School
Inspire · Care · Grow



St Barnabas
CHURCH OF ENGLAND PRIMARY SCHOOL



St Lawrence's
CHURCH OF ENGLAND PRIMARY SCHOOL



Tang Hall
Primary School



Welburn
COMMUNITY PRIMARY SCHOOL



Job Description

Key Responsibilities

- Keep up to date with developments in subject area and education in general to ensure that best practice is adopted within the department.
- Ensuring that the maths curriculum is coherently sequenced across all key stages (3-5) and year groups (7-13), incorporates the National Curriculum programmes of study and meets the needs of all students including disadvantaged.
- Ensure that schemes of learning are used, reviewed and modified to enable high standards of teaching and learning.
- Promoting the achievement of high standards through effective quality first teaching across the maths department.
- Ensuring that the dialogue about and development of high-quality teaching and learning is used to drive the department forward.
- Developing innovative strategies to enhance the quality of learning, teaching and achievement.
- Designing and monitoring rigorous assessments, including regular standardisation and moderation of student work to ensure that assessment processes and QLA systems are accurate, consistently applied and robust.
- Ensuring that the maths department's self-evaluation is effective both in terms of staff performance and the academic standards reached.
- Producing and implementing the maths Raising Achievement Plan to address the priorities identified for further development.
- Ensuring, through regular quality assurance, that the quality of education in the maths department is effective and leads to good outcomes for all including disadvantaged students. To include carrying out regular learning walks, student voice and book looks to assist with QA.
- Exemplify in own practice the skills of teaching and learning typified by lead professionals and ensure that good practice is shared throughout the department.
- Managing the maths department and its resources, including the deployment of all staff, the appropriate delegation of tasks and the effective use of all resources.
- Implementing an effective tracking system, which monitors students' progress across each key stage so that through accurate identification, any underperformance is supported by effective interventions and/or adaptations to the curriculum, the impact of which is closely monitored, to make sure those students who are underachieving make rapid progress to reach their target grades.
- Managing staff in the department, to ensure that performance management systems are followed and that appropriate training is provided to meet identified needs.
- Ensuring that all teachers of maths have opportunities for appropriate professional development.
- Ensuring that regular and appropriate homework contributes to learning, is monitored and quality assured regularly.



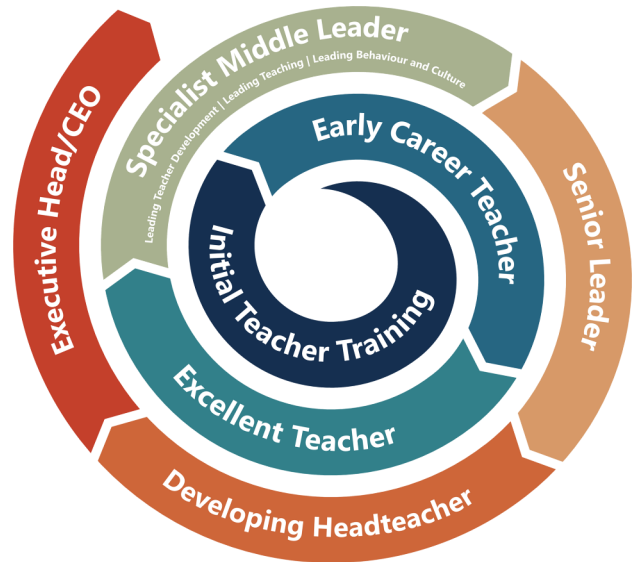
Professional Development

The professional development of our staff is a key commitment of the Trust and we have a career pathways programme to ensure we recruit, develop and retain the very best colleagues.

Teaching Staff

For our teaching staff, we have a career pathways programme which starts with Initial Teacher Training and progresses through to Executive Headteacher/CEO. At Pathfinder we:

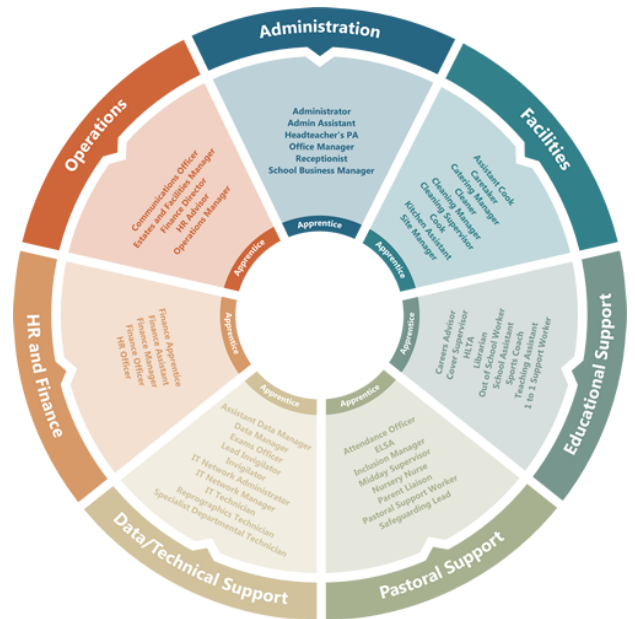
- create a bespoke pathway to develop each person's individual talents and ambitions.
- provide staff with the highest quality research-proven CPD training.
- offer access to skilled leaders and mentors.
- give staff opportunities for development from Initial Teacher Training to senior management.



Support Staff

The support staff in our schools benefit from our Learning, Training and Development programme which aims to ensure that all staff are equipped with the necessary skills, qualifications and resources to fulfil their roles to the highest standard. At Pathfinder, our support staff will:

- be confident in fulfilling all aspects of their role to the highest level.
- act as a source of support, advice and guidance to their colleagues.
- identify any training and development needs for themselves and staff they manage.
- be given support and advice to develop their skills to progress to posts at the next level.



Pathfinder Teaching School Hub

Staff in our schools are able to benefit from the wide range of training and development opportunities delivered through the Pathfinder Teaching School Hub, based at Archbishop Holgate's School. As well as providing the full suite on National Professional Qualifications, the Hub and its key partners deliver a wealth of training and development opportunities for teachers at every stage of their career across our urban, rural and coastal school communities.





Pathfinder

Multi Academy Trust

Benefits of Working at Pathfinder

Our range of employee benefits aims to support the health and wellbeing of our staff ensuring they are valued and supported throughout their time at work.

Pension Scheme

You are offered membership of either Teachers' Pension Scheme, or for support staff, the Local Government Pension Scheme. As well as employees paying into the scheme (banded, based on earnings) Pathfinder also pays into the scheme on your behalf at the following rates (regardless of earnings).

Local Government Pension Scheme

We contribute an additional 20.4% of your salary.

Teachers' Pension Scheme

We contribute an additional 28.68% of your salary.

Staff Benefits Platform

Our dedicated employee benefits platform Vivup provides staff with access to all of our benefits in one easy to use and convenient place.

Vivup also provides exclusive benefits through their platform and the option to spread the cost of purchasing items straight from your salary through the home and electronics and cycle to work benefits.



CSSC Sports and Leisure

Our staff benefits scheme with CSSC gives Pathfinder staff access to over 4,500 benefits, offers and activities including savings at restaurants, cinemas, gyms, theme parks and attractions; up to 70% off shopping with thousands of online and high street retailers and free health and wellbeing portal for courses, classes and content.



TES Magazine Subscription

All Pathfinder employees have unlimited access to the online TES magazine keeping you up to date with the latest education news, analysis and teaching and learning knowledge.



Employee Assistance Programme

Making sure everyone at Pathfinder gets the support they need whatever their



worries, the Employee Assistance Programme provides specialist counselling and resources 24 hours a day, 365 days a year. The service is completely confidential and provides support by telephone or online from specialist call handlers and counsellors who understand the demands of working in education. You can also access:

- Emotional support and counselling
- Six sessions of in person or telephone counselling
- Access to online Cognitive Behavioural Therapy
- Specialist information on work-life balance
- Financial and legal advice

Able Futures

As a Trust, we are subscribed to Able Futures which provides up to nine months of confidential, no cost advice, guidance and support from mental health professionals to help you cope with work while you manage a mental health condition such as anxiety, depression or stress.



Discounted Bus Travel

As part of the First Bus Commuter Travel Club, Pathfinder employees benefit from discounts on work and leisure travel using First Bus services. The benefits include:



- Savings on discounted monthly bus tickets
- Unlimited bus travel in your chosen zone
- Tickets delivered straight the First Bus app
- Spread the cost of annual travel

Free Will Writing Service

Estate planning and will writing specialists Durham McCarthy



are able to offer Pathfinder employees a free will writing service to help you plan for your future, protecting your family and loved ones.