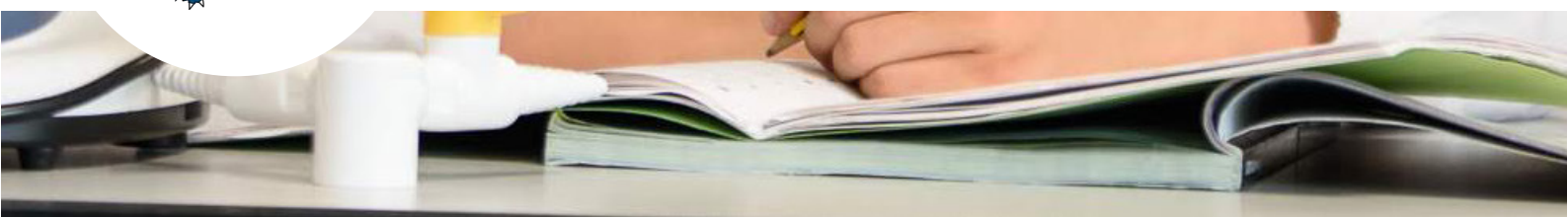




The
Sittingbourne School

HEAD OF MODERN LANGUAGES INFORMATION





CONTENTS

The Sittingbourne School	Pg 3
Welcome from Trust CEO Jon Whitcombe	Pg 4
Job description	Pg 5
Person specification	Pg 10
Application process	Pg 11
Overview of Swale Academies Trust	Pg 12
Safeguarding	Pg 13

Dear Applicant

The Sittingbourne School is a large, non-selective school situated in a semi-rural area of Sittingbourne. We are fortunate to own an extensive site that boasts wonderful sporting facilities, open green spaces and significant investment in new buildings.

We offer our pupils a broad and stimulating curriculum with a sharp focus on literacy and high expectations for all. We are proud of the positive learning culture that exists within the school and we set the bar high on expectations for behaviour and student engagement. We have extensive pastoral systems to support student engagement and wellbeing, and relationships between staff and students are open, friendly and cooperative.

Our school has been on a fabulous journey of continuous development since joining Swale Academies Trust over eight years ago. Ofsted has judged our school Good in the last two inspections, and we continue to move from strength to strength. Over the years, the school's popularity has grown considerably, with 2020 seeing us oversubscribed in all years and our large and thriving Sixth Form more popular than ever. Outcomes for the school show a continuing trend of improvement, highlighting the effectiveness of strategies implemented over time.

In 2019, the school underwent a holistic branding exercise to reaffirm our culture and core values. Consequently, the school has a clear, and embedded, vision that staff follow and fully believe in. Our ethos is community-centred, empowering and fully inclusive. Everything we do here at The Sittingbourne School is focused on ensuring that children of all abilities, backgrounds and beliefs feel valued and are given the guidance and support they need to flourish.

Leadership across the school is a key strength. The school benefits from a large and highly experienced leadership team - and the support of an Executive Headteacher who knows the school and staff well. The leadership team is led by a Head of School with the support of four exceptional deputy headteachers, as well as a vibrant and effective team of assistant headteachers and middle leaders. The school also profits from the collaborative support of Swale Academies Trust, whereby close working networks continue to drive improvements to teaching and learning as well as school management. The work culture is friendly, professional and supportive, with recruitment and retention another real strength of the school.

Students and staff feel proud to belong to The Sittingbourne School.

Yours Sincerely



Mr Nick Smith
Headteacher



Dear Applicant,

Thank you for your interest in this role within Swale Academies Trust. Swale Academies Trust is one of the leading Multi-Academy Trusts in the south east with a highly effective record in school improvement. We are currently looking for outstanding leaders and teachers to join us as we grow. Swale Academies Trust consists of a group of primary and secondary schools based in Kent, East Sussex and South London. We are also working with a number of schools who require support prior to joining the Trust. We have a very strong track record in school improvement and are looking for dynamic people who want to transform children's lives in some of the most challenging educational contexts in the region.

We are looking for ambitious professionals who are interested in working with pupils from diverse communities in some of the region's most challenging schools. We want energetic, inspiring classroom practitioners who are highly motivated and committed to the profession. We recognise the importance of a well-ordered teaching environment for staff to flourish. Parents and teachers provide regular positive feedback about our work to create a positive climate for learning. As a result, Ofsted visits identify pupils' conduct as a strength across the Trust. We want teachers who are keen to make a positive difference to children's lives, are proud of the students they teach, the work they produce and share this pride in the achievements of all.

Our salary package, continued professional development and additional benefits are some of the best in the sector. We invest in our staff at every level with a wide range of coaching programmes, delivered across our schools, including Westlands, the Trust Teaching school. We also work closely with a number of external partners such as the University of Kent to support leadership development across our family of schools. All of our schools are unique and reflect the communities they serve but they work closely together to support each other and collaborate to raise standards. Teachers identify the well-structured collaboration as a key factor in improving their practice but also improving their work-life balance.

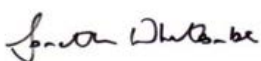
Since its creation in September 2010, Swale Academies Trust has become a strong and successful school improvement service, specialising in taking schools in Ofsted category and turning them into good schools. A glance at the most recent Ofsted reports for Beaver Green Primary School, South Borough Primary School, Meopham School, Regis Manor Primary School, Westlands Primary School, Istead Rise Primary School and The Sittingbourne School, will all point to the effectiveness of the Trust in bringing about change and providing and enabling excellent leadership. First and foremost, Swale Academies Trust is about the provision and development of high quality leadership and management.

Our ambition is driven by enabling schools and children to succeed. We have a wide range of excellent and highly accomplished senior leaders who lead with a sense of purpose, charisma and a set of shared values. The Trust is fortunate to be overseen by a Board of Directors who share leaders' values and provide the highest quality challenge and support.

We are proud of our schools and strive for a sense of shared pride in the achievements of all of our students.

We look forward to receiving your application.

Yours sincerely,



Jon Whitcombe
Chief Executive Officer

JOB DESCRIPTION



Job Title: Head of Modern Languages
Salary: MPS / UPS plus TLR 2A
Responsible to: Headteacher

Purpose of the job

The current School Teachers' Pay and Conditions Document describes the general professional duties which teachers are expected to undertake in the course of their employment.

Teachers are also expected to perform particular duties as may reasonably be assigned to them by the Headteacher.

For the purpose of this general job description these particular duties are:

Curriculum

- To plan and prepare courses.
- To continuously review teaching methods, schemes of work and resources as necessary.
- To advise and co-operate with the line-manager, other teachers and the Senior Leadership Team on the preparation and development of courses of study, teaching materials and resources, teaching programmes, methods of teaching, assessment and pastoral arrangements.
- To participate in meetings of the school which relate to the curriculum for the school or the administration or organisation of the school, including pastoral arrangements.
- To take part as required in the review, development and management of activities relating to the curriculum, organisation and pastoral functions of the school.

Professional Development etc.

- To participate in any arrangement within an agreed national framework for the performance management of performance and that of other teachers.
- To participate in arrangements for further training and professional development as a teacher.
- To contribute as appropriate to the selection for appointment and professional development of other teachers and support staff, including the induction and assessment of new and newly qualified teachers.
- To co-ordinate or manage the work of other teachers as appropriate.
- To manage or supervise support staff as necessary.

JOB DESCRIPTION



CORE PURPOSES OF THE POST

Leadership

- Communicate a clear vision which inspires and motivates pupils, staff and the community.
- Provide professional leadership which sets the direction for the school, and ensure that it is organised and managed to meet its aims and targets.
- Develop positive relationships and attitudes towards pupils and staff, and towards parents, governors and members of the local community, by consulting, listening and responding in an open and collegiate way.
- Be visible around the school and in the local community, leading by example – with integrity, creativity, resilience, and clarity.
- Empower all students and staff to strive for excellence and to understand the fundamental value of education to improve lives.
- Manage workload and that of others to allow an appropriate work/life balance.
- Demonstrate high standards of personal integrity, loyalty, discretion and professionalism, publicly supporting all decisions of the Trust.

Curriculum, teaching and learning

- Create a safe, calm and well-ordered environment for all pupils and staff, one that is focused on safeguarding pupils and developing exemplary behaviour in school and in the wider society.
- Develop a rich and balanced curriculum which meets the needs of all pupils, regardless of age, background or need, and implement an effective assessment framework.
- Ensure that learning is at the centre of strategic planning and resource management.
- Promote a consistent and continuous focus on pupils' achievement, using data and benchmarks to set ambitious targets and monitor progress in every pupil's learning.
- Ensure creative and effective approaches to teaching so that all pupils become engaged in their own learning and can achieve success.
- Ensure that there are effective systems in place to support excellent standards of behaviour and attendance.
- Ensure that all pupils are accurately identified according to the SEND Code of Practice and provided with the appropriate level of support.
- Support the development of new and emerging technologies to enhance and extend the learning experience of pupils.
- Instil a strong sense of accountability in staff for the impact of their work on pupils' outcomes, and challenge underperformance at all levels.
- Establish an educational culture of 'open classrooms' as a basis for sharing best practice within and between classes.

JOB DESCRIPTION



Pupils

- To plan and prepare lessons.
- To teach pupils assigned, including setting and prompt marking of work carried out by pupils in school or elsewhere.
- To set relevant and sufficient homework, according to the homework timetable, and to ensure prompt marking of the homework or coursework.
- To assess, record and report on the development, progress and attainment of pupils, according to departmental and whole-school policies.
- To participate in the arrangements for preparing pupils for public examinations. To assess pupils for the examinations and record and report these assessments.
- To promote the general progress and wellbeing of individual pupils and of any class or group assigned.
- To provide guidance and advice to pupils on educational and social matters and on their future education and careers, including information about the sources of more expert advice on specific questions.
- To make records of, and reports on, the personal and social needs of pupils.
- To provide or contribute to oral and written assessments, reports and references relating to individual pupils and / or groups of pupils.
- To maintain good order and discipline among pupils and to safeguard their health and safety both when they are authorised to be on the school premises and when they are engaged in authorised school activities elsewhere.
- To attend assemblies and to supervise tutor groups while in assembly, unless the teacher wishes to opt out of any religious aspect of assembly where this is against their beliefs.
- To accurately register pupils at a.m. and p.m. registration and during lessons and at any other time necessary before, during or after school.
- To provide, as a Tutor, the individual contact, knowledge and support for pupils within the allocated tutor group and to liaise with parents and other staff accordingly, as appropriate.
- To contribute to the personal and social education of pupils generally and specifically through the teaching of the PSE programme to the tutor group.
- To support all colleagues in ensuring that high standards of uniform and behaviour are maintained within the school.
- To work with other colleagues to ensure that there is a consistent approach in ensuring pupils abide by the school's code of conduct and the same consistency in dealing with pupils who do not conform to school rules.
- To make relevant records and reports as necessary.

JOB DESCRIPTION



Parents and the wider community

- To communicate and consult with the parents of pupils when required.
- To communicate and co-operate with other persons and outside agencies as required.
- To participate in meetings arranged for any of the purposes described above.
- To foster good relationships with parents.
- Resources and Accommodation
- To take responsibility for the care of resources, accommodation and fabric of the school, particularly when pupils are present.
- To allocate, as appropriate, equipment and materials in connection with his/her teaching.
- Policies and Staff Handbook.
- To ensure that all departmental and school policies are understood and complied with.
- To ensure that they have read and understands the contents of the Staff handbook and complies with all the requirements detailed in the handbook.

Administration

- To participate in administrative and organisational tasks related to the above duties.

Health and Safety

- To accept responsibility for own safety – as well as that of the pupils and colleagues with whom you work.
- To undertake Health and Safety training offered.
- To be aware of Health and Safety issues and the hazards associated with manual handling tasks, including the cumulative effect of repeated manual handling operations.
- To follow any control measures and care plans required by the generic or individual risk assessments.
- To be familiar with and use available equipment safely.
- To be aware of own limitations and inform your employer of any circumstances that may alter your ability to perform manual handling tasks.
- To report accidents and hazards.
- To report deficiencies in the employer's Health and Safety protection arrangements.

Head of Department / Subject Leader

In addition to the requirements of a class teacher and any other agreed responsibilities:

- To be accountable for the results of a named curricular area / aspects of the school's work and to support, hold accountable, develop and lead their team.

JOB DESCRIPTION



SPECIFIC RESPONSIBILITIES:

- To work with subject teachers to develop their classroom organisation and teaching methods, including providing regular feedback for their team in a way which recognises good practice and supports their progress against performance management objectives
- To ensure high quality teaching resources are consistently used across the subject area
- To support, facilitate and monitor the progress of designated subject area / development plans to ensure they make a significant contribution to the School Improvement Plan.
- To review and report, as required, on the standard of leadership, teaching and learning in the designated subject / area consistent with the procedures in the school self-evaluation policy.
- To support and assist subject teachers with the behaviour management of their students.
- To intervene with the behaviour for learning strategies as required.
- To follow agreed School protocol regarding the tracking and monitoring of rewards and sanctions.

Working Time

The following is extracted from the School Teachers' Pay and Conditions Document.

- A teacher employed full-time shall be available for work for 195 days in any school year, of which 190 days shall be days which they may be required to teach pupils in addition to carrying out other duties; and those 195 days will be specified by the head teacher.
- Such a teacher shall be available to perform duties at such times and such places as may be specified by the head teacher for 1265 hours in any school year, those hours to be allocated reasonably throughout those days in the school year on which they are required to be available for work.
- Such a teacher shall work such additional hours as may be needed to enable them to discharge effectively their professional duties, including, in particular, the marking of pupils' work, the writing of reports on pupils and the preparation of lessons, teaching materials and teaching programmes. The amount of time required for this purpose beyond the 1265 hours and the time outside the 1265 specified hours at which duties shall be performed shall not be defined by the governors but shall depend upon the work needed to discharge the teacher's duties.

A summary of the directed time for teachers as allocated by the Headteacher is detailed in the staff handbook.

The Working Time Regulations 1998

All teachers are subject to the EU Working Time Regulations which are described in paragraph 114 of DfEE Circular No. 12/99.

The duties / responsibilities of this post may vary from time to time according to the changing needs of the Trust services.

PERSON SPECIFICATION



CRITERIA		ESSENTIAL/ DESIRABLE
Qualifications & Training	<ul style="list-style-type: none"> Qualified Teacher Status or willingness to work towards this. A Degree. 	E E
Experience of	<ul style="list-style-type: none"> Teaching of specialist subject across all three key stages. 	E
Skills and Abilities	<ul style="list-style-type: none"> Ability to communicate positively with children. Ability to work supportively and collaboratively within a team. Ability to reflect upon and improve your teaching practice. 	E E E
Knowledge	<ul style="list-style-type: none"> Knowledge of the National Curriculum. Understanding of the issues surrounding the safeguarding of children and commitment to child welfare and safety. A good understanding of the importance of literacy and numeracy across the curriculum. A good understanding of how to assess pupil progress. 	E E E E
	<ul style="list-style-type: none"> A good understanding of how to plan and assess work for vulnerable groups, such as SEN pupils, pupil premium pupils and gifted and talented pupils. 	D
Personal qualities	<ul style="list-style-type: none"> Enthusiasm for your specialist subject. Ability to manage own workload. A commitment to own continuing professional development. 	E E E

The Application Process

Applications will only be accepted from candidates completing the appropriate application form. All sections of the form which are applicable to you must be completed as clearly and fully as possible.

Please note CVs will not be accepted in place of a completed application form.

Application forms can be found on the Kent-Teach website and all electronic application should be made via this route. Alternatively, completed forms can be sent by post to the following address:

Miss Sarah Scott-Drysdale
The Sittingbourne School
Swanstree Avenue,
Sittingbourne
Kent
ME10 4NL

The Shortlisting and Interview Process

After the closing date for this post a panel will conduct the shortlisting process. You will be selected for interview based entirely on the contents of your application form, it is therefore important that you fully read the Job Description and Person Specification prior to completing your form.

After the shortlisting process has been completed candidates who have been selected for interview will be informed, and provided with full details of the interview programme. If you have not heard from us within 10 working days of the closing date for this post, you have, on this occasion, unfortunately been unsuccessful.

All candidates who are invited to interview must bring the following original documents:

- Documentary evidence of right to work in the UK
- Visual identification which includes a photograph, usually a passport or driving licence
- Documentary proof of current name and address
- Where appropriate any documentation evidencing change of name
- Certificates of educational or professional qualifications that are necessary or relevant for the post

Conditional Offer

Any offer of employment will be conditional upon a number of formalities, including, but not restricted to the following:

- Verification of right to work in the UK
- Receipt of two satisfactory references
- Verification of identity checks and qualifications
- Satisfactory enhanced DBS check, as well as additional checks that may be appropriate if you have worked or been resident overseas in the previous five years
- Satisfactory pre-employment health clearance
- A check against the Teacher Service Register for any teaching prohibition or restriction orders where you are applying for a teaching role or if you have previously held a teaching role in past employment.

OVERVIEW

Since its creation in September 2010, Swale Academies Trust has developed into one of the South East's leading Multi-Academy Trusts.

Our purpose is to develop good and outstanding schools and ensure the rapid improvement of schools with challenges.

As the Trust has grown and developed, we continue to ensure that effective school support and leadership is maintained. The Trust's approach to school improvement is based on a combination of CPD, capacity building and collaboration, with a relentless focus on teaching and pupil progress, in order to effect rapid and sustained improvements in outcomes for young people.

The Trust is an organisation which is driven by the belief that all children deserve a good quality education where they are seen as individuals and above all are exceptionally well cared for.

Swale Academies Trust – Schools

Primary

- Beaver Green Primary School, Ashford
- Istead Rise Primary School, Istead Rise
- James Dixon Primary School, Bromley
- Langney Primary Academy, Eastbourne
- Parkland Infant School, Eastbourne
- Parkland Junior School, Eastbourne
- Regis Manor Primary School, Sittingbourne
- Shinewater Primary School, Eastbourne
- South Borough Primary School, Maidstone
- Westlands Primary School, Sittingbourne



Secondary

- Meopham Secondary School, Meopham
- Peacehaven Community School, Eastbourne
- The Eastbourne Academy, Eastbourne
- The North School, Ashford
- The Sittingbourne School, Sittingbourne
- The Turing School, Eastbourne
- The Whitstable School, Whitstable
- Westlands Secondary School, Sittingbourne



Central Support Services (based at Trust Head Office), Ashdown House, Sittingbourne

- Human Resource Team
- Finance Team
- ICT Team
- Building/Estate Management

SWALE ACADEMIES TRUST SAFEGUARDING POSITION

Introduction and Ethos

Swale Academies Trust is a community and all those directly connected (staff, governors, parents, families and pupils) have an essential role to play in making it safe and secure. All schools within the Trust recognise their moral and statutory responsibility to safeguard and promote the welfare of all children.

Trust Schools recognise the importance of providing an ethos and environment within school that will help children to feel safe, secure and respected; encourage them to talk openly; and enable them to feel confident that they will be listened to. We are alert to the signs of abuse and neglect and follow our procedures to ensure that children receive effective support, protection and justice.

The Trust core safeguarding principles are:

- It is a whole school responsibility to safeguard and promote the welfare of children
- All children (defined as those up to the age of 18) regardless of age, gender, ability, culture, race, language, religion or sexual identity, have equal rights to protection
- All children have a right to be heard and to have their wishes and feelings taken into account
- All staff understand safe professional practice and adhere to our code of conduct and other associated policies
- All staff have a responsibility to recognise vulnerability in children and act on any concern in accordance with this guidance

There are four main elements to our safeguarding policy:

- Prevention (e.g. positive, supportive, safe school culture, curriculum and pastoral opportunities for children, safer recruitment procedures)
- Protection (by following the agreed procedures, ensuring all staff are trained and supported to respond appropriately and sensitively to safeguarding concerns)
- Support (for all pupils, parents and staff, and where appropriate specific intervention for those who may be at risk of harm)
- Working with parents and other agencies (to ensure appropriate communications and actions are undertaken)

The procedures contained in our policy apply to all staff and governors and are consistent with those of each school's local safeguarding boards.

Retention of information

All information is stored securely and any information supplied by unsuccessful candidates will be destroyed through the confidential waste system after six months from the date of the interview, in accordance with our retention of records procedure.

Privacy Notice

Please refer to the Trust's Privacy Notice for job applicants for information about how we use any personal data about them we hold.

This can be downloaded here: <https://www.swale.at/page/?title=Privacy+Notice&pid=33>

