

Introduction to IFtL

...A great place to be



**Inspiring Futures
through Learning**

Welcome from the CEO

Inspiring Futures through Learning (IFtL) Multi Academy Trust, established in 2016, encompasses 15 schools across Milton Keynes and Corby, Northamptonshire. We are proud of our growth and the development of our schools, not for its own sake, but because we are truly able to evidence that our ways of working together, sharing excellence in practice and developing people positively impacts over 5000 children and their families.

Our roots as an organisation stem from our experience, practice and belief in school development and system leadership. Our ambition and aspiration for all, no matter the starting point, is an essential force in creating confidence, innovation and strength in our individuals, teams and schools.

We are mindful of our integration with the wider school system. The UK Government's White Paper '*Opportunity for all: strong schools with great teachers for your child*' in March 2022, outlines the vision for all schools to be part of a strong Multi-Academy Trust providing '*high quality and inclusive education....working where they are needed most, levelling up standards and transforming underperforming schools*'.

IFtL has a proven track record in these areas and intends to continue to marry our vision with the national landscape of improvement and equity of access to opportunities.

At IFtL, we strive to continuously deliver high quality education, including for disadvantaged children and children with SEND, operating fair access. However, in addition, our schools have an ever-growing wider purpose in intellectual, social and character development; understanding our role in society; our civic duty. We recognise the power of schools working together as places that inspire people, children and adults, to be continuously learning, to be supported in their growth and to celebrate and help others in their achievements is something that we fully recognise and are driven to deliver in an ambitious yet sustainable way.

We are successful in our vision by attracting, retaining and developing the best leaders, teachers and professional services staff; by acting and investing wisely so that our futures are secure and make a sustained, engaging and positive difference to a child's education; and by truly listening to the needs of our community to ensure all are able to thrive.

In education, standing still simply isn't an option. Young people only get one chance and everyone who works for IFtL, within our schools and within the central team, takes this very personally.

We take our successes and learnings into the future. This 3 year strategic plan outlines our key focus areas moving forward and demonstrates our continued commitment to '*inspiring the futures of us all together*'.

Sarah Bennett
CEO of IFtL



Vision and Values

At Inspiring Futures through Learning, we are proud that our vision, values and overall priorities are clear and accessible to all, reflect our beliefs and attitudes, guide our work and are a framework that allows everyone within our community to thrive and develop within their own strengths in a dynamic yet supportive environment.

“To inspire the futures **of us all** through learning **together**”

Our priorities



Ensure all pupils achieve their potential

Progress and attainment for all years and groups



Continuously develop excellent practice

In all areas, for all children and colleagues



Be financially sustainable and accountable

Being resourceful, attracting others to develop together



Collaborate, innovate and research to be leaders in education

System leadership both internal and external, exciting opportunities and experiences offered



Nurture a safe, secure and engaging environment in which we all thrive

Looking after each other, keeping each other safe, caring about the whole

F

Fun

We enjoy what we do

U

Unique

We celebrate difference

T

Together

We support and encourage both within our Trust and beyond

U

Unafraid

We are confident to challenge and do things differently

R

Responsible

We stand up to scrutiny and are scrutinised

E

Energetic

We are positive and dynamic

S

Safe

We are safe, resilient and strong, individually and together

Our Ambitions for 2022 – 2025

IFtL is an ambitious, dynamic and multi-faceted MAT with a strong vision that demands excellence, innovation and focus. We are realistic about ourselves and the environment in which we operate – we are clear that solid foundations and addressing challenges with a timely, solution focused approach allows us the flexibility to relentlessly continue in our vision to inspire futures for us all.

This Strategic Plan outlines our approach for the next three years of development and growth of IFtL. Through awareness, analysis and recognition of our current position and environmental factors, we have identified specific areas of focus for the next period that enhance, strengthen and complement our overall vision and Strategic Priorities.

Our Strategic Plan Strands are:



Future Focused



Levelling Up



Cultural Leadership



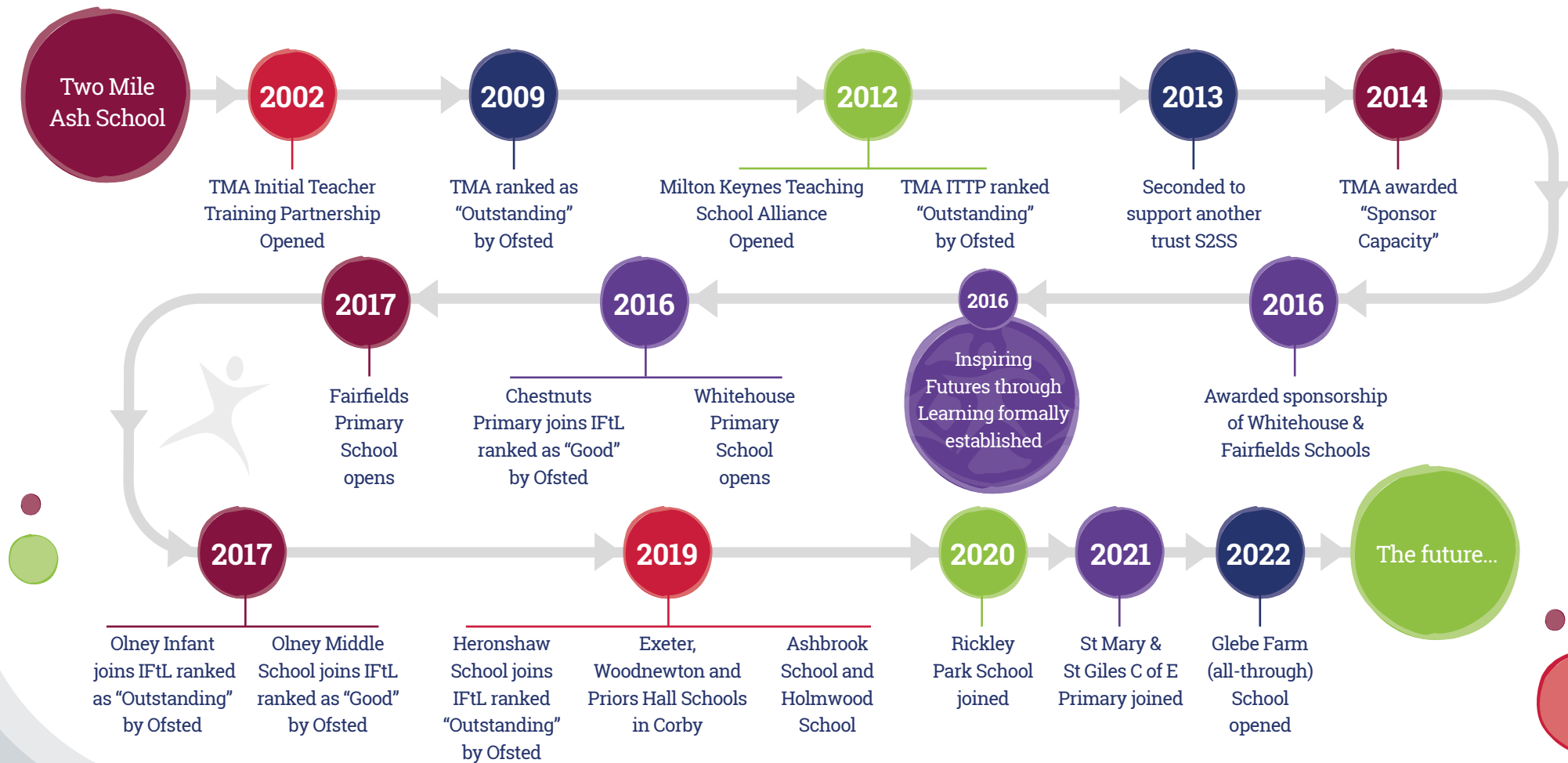
Strong Schools

These Strategic Plan Strands interconnect – each area of development and enhancement will purposely affect the direction of the organisation and will impact on the whole. Identifying the Strands themselves allows us to be clear in our directional focus and our success criteria.

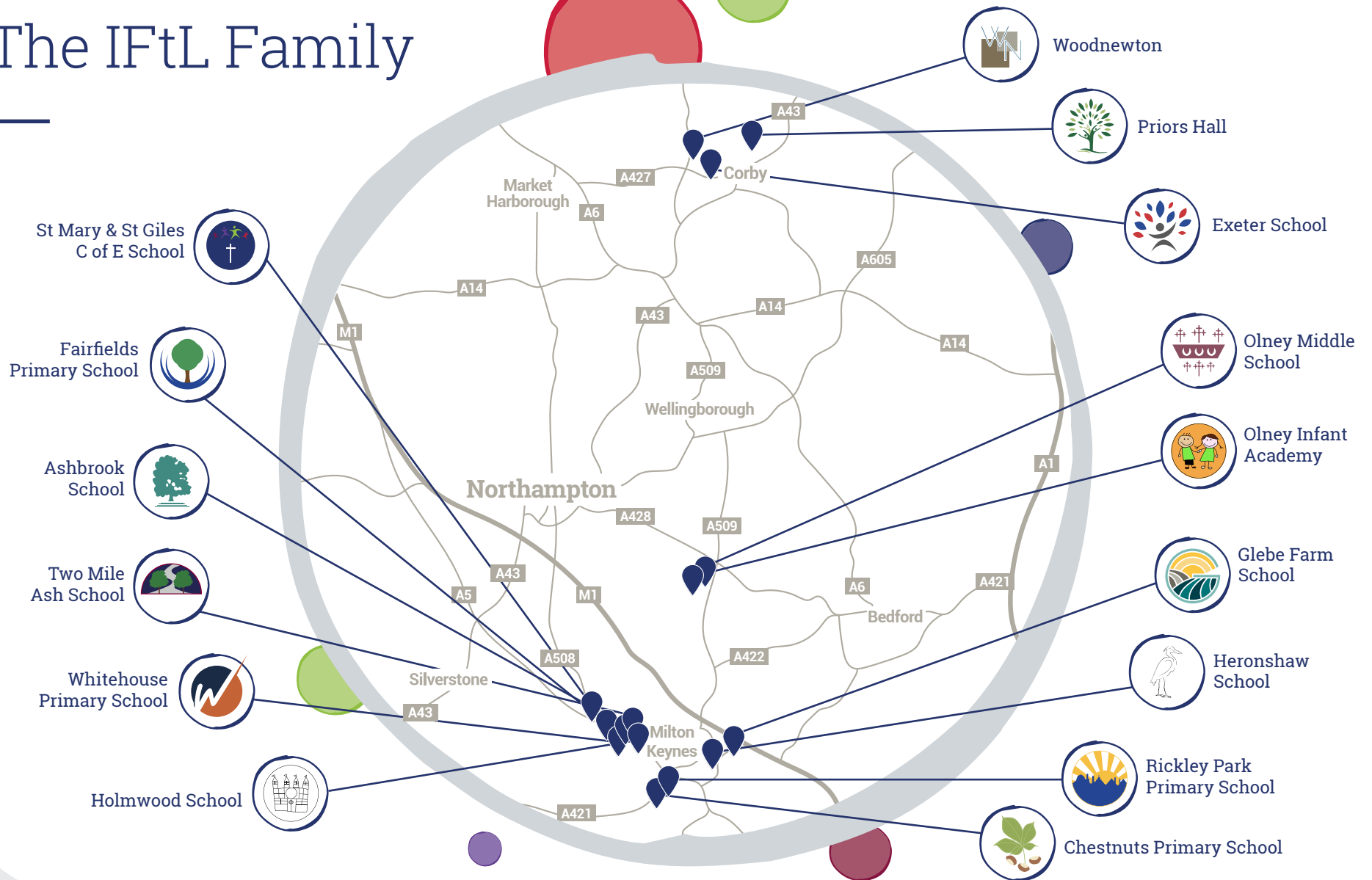
See our full Strategic Plan at www.iftl.co.uk



IFtL – Who we are



The IFtL Family



The IFtL Family

At IFtL, we are committed to developing a family of schools who inspire all of our futures through learning. Schools within our Trust share the same values and ethos; our teams are constantly in the pursuit of development and excellence everyday. We open doors to opportunity and unlock the potential of both our children and our adults so that we all develop the confidence to achieve both our independent and collective ambitions. At IFtL, we are never alone. We know we are stronger together – one united family striving for excellence for all, in everything we do.



Ashbrook Infant School *

01908 561366
office@ashbrookschool.net
www.ashbrookschool.co.uk

School Leader:

Roxanne Jackson

Infant School (Ages 4-7)
180 pupils in Sept 2022



Chestnuts Primary School

01908 373748
office@chestnuts.milton-keynes.sch.uk
www.chestnutsprimaryschool.co.uk

School Leader:

Becky Skillings

Primary School (Ages 4-11)
410 pupils in Sept 2022



Exeter School (A Learning Community)

01536 204765
info@exeteralc.com
www.exeterschool.co.uk

School Leader:

Scott Nicholls

Primary School (Ages 4-11)
490 pupils in Sept 2022



Fairfields Primary School

01908 410330
enquiries@fairfieldsprimary.co.uk
www.fairfieldsprimary.co.uk

School Leader:

Kelly Cursley

Primary School (Ages 4-11)
000 pupils in Sept 2022



Glebe Farm School

01000
enquiries@glebefarmschool.co.uk
www.glebefarmschool.co.uk

School Leader:

Matthew Shotton

All-through school (Ages 4-16)
Opened in Sept 2022



Heronshaw School

01908 608380
office@heronshawschool.co.uk
www.heronshawschool.co.uk

School Leader:

Jamie Ainscow

Infant School (Ages 4-7)
220 pupils in Sept 2022



Holmwood School *

01908 260596
office@holmwoodschool.co.uk
www.holmwoodschool.com

School Leader:

Jess Elford

Infant School (Ages 4-7)
180 pupils in Sept 2022



Olney Infant Academy

01234 711388
admin@olneyinfant.org
www.olneyinfantacademy.co.uk

School Leader:

Sarah Armitage

Infant School (Ages 4-7)
180 pupils in Sept 2022

* These schools serve the same community and are working together closely as The Partnership of Ashbrook, Two Mile Ash and Holmwood Schools (PATH)

Data correct September 2022

The IFtL Family

At IFtL, we are committed to developing a family of schools who inspire all of our futures through learning. Schools within our Trust share the same values and ethos; our teams are constantly in the pursuit of development and excellence everyday. We open doors to opportunity and unlock the potential of both our children and our adults so that we all develop the confidence to achieve both our independent and collective ambitions. At IFtL, we are never alone. We know we are stronger together – one united family striving for excellence for all, in everything we do.



Olney Middle School

01234 711323

office@olneymiddle.milton-keynes.sch.uk

www.olneymiddle.milton-keynes.sch.uk

School Leader:

Glenn Young

Junior School (Ages 7-11)

360 pupils in Sept 2022



Priors Hall (A Learning Community)

01536 216090

info@priorshallalc.com

www.priorshallschool.co.uk

School Leader:

Tess McQuade

Primary School (Ages 4-11)

000 pupils in Sept 2022



Rickley Park Primary School

01908 372979

office@rickleypark.co.uk

www.rickleypark.co.uk

School Leader:

Nicole Bramwell

Primary School (Ages 4-11)

430 pupils in Sept 2022



St Mary & St Giles C of E School

01908 562186

office@smsg.uk.com

www.smsg.uk.com

School Leader:

Adam Palmer

Primary School (Ages 4-11)

355 pupils in Sept 2022



Two Mile Ash School *

01908 562262

reception@tma.bucks.sch.uk

www.tmaschool.com

School Leader:

Lucy Eldridge

Junior School (Ages 7-11)

680 pupils in Sept 2022



Whitehouse Primary School

01908 533288

enquiries@whitehouseprimary.co.uk

www.whitehouseprimary.co.uk

School Leader:

Linda Kelly

Primary School (Ages 4-11)

560 pupils in Sept 2022



Woodnewton (A Learning Community)

01536 265173

info@woodnewtonalc.com

www.woodnewtonalc.com

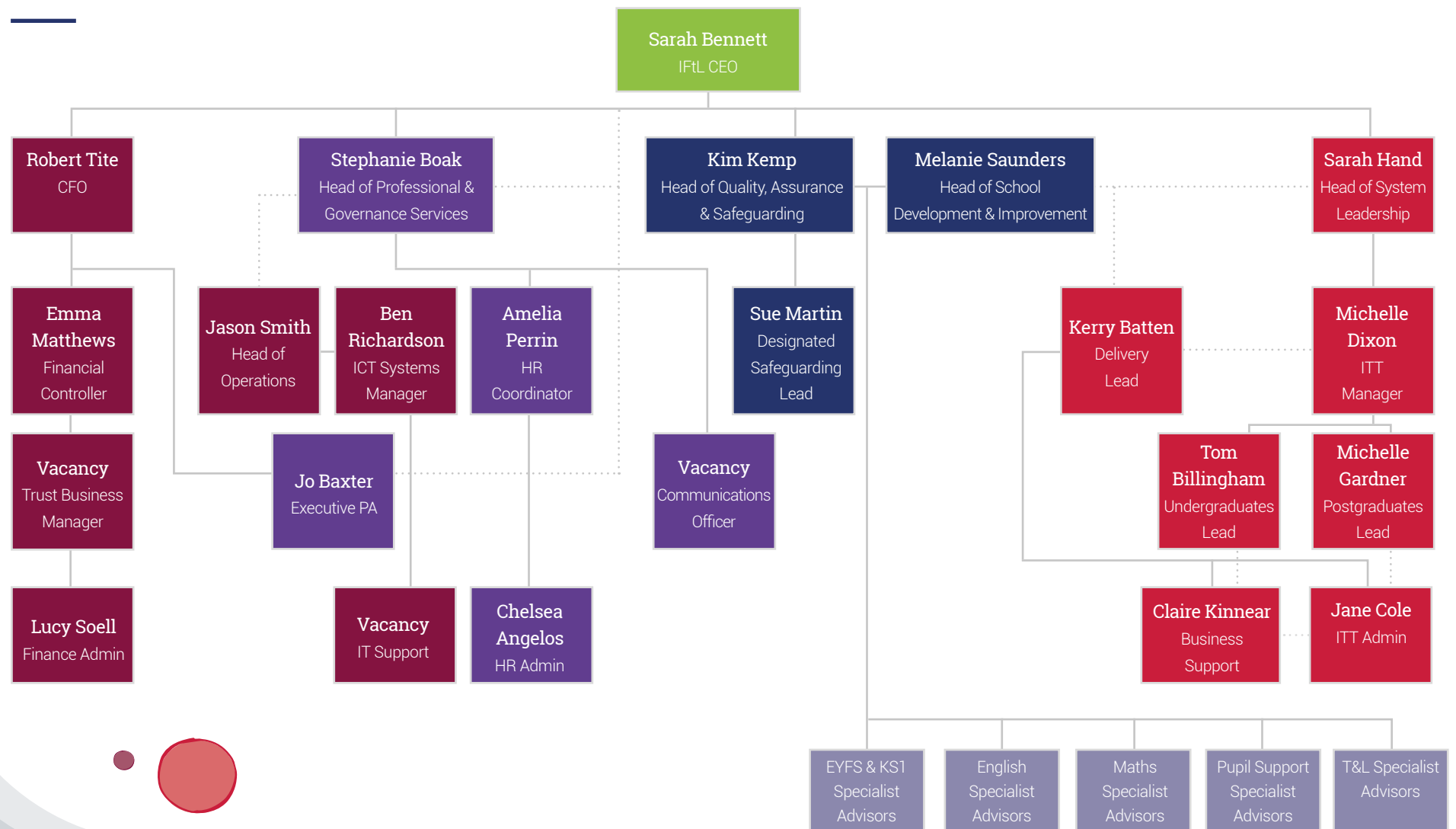
School Leader:

Kate West

Primary School (Ages 4-11)

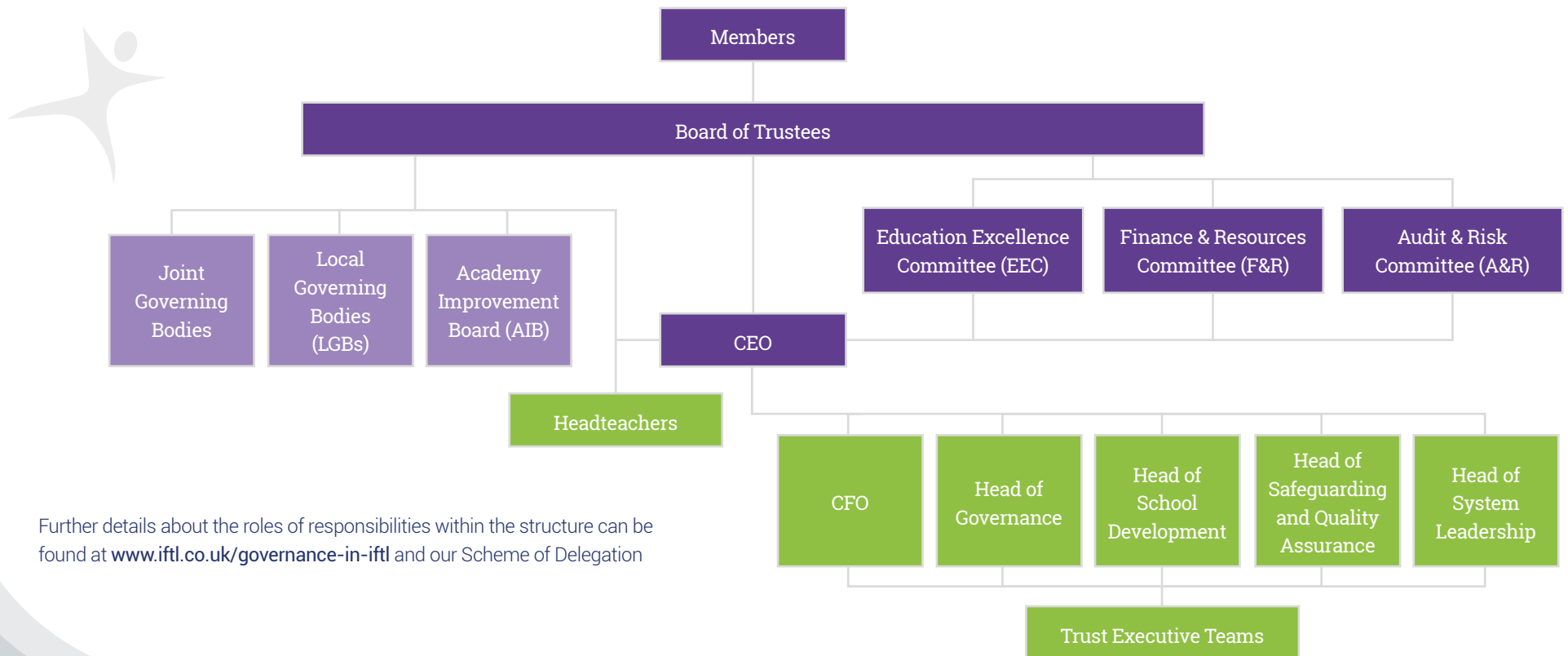
940 pupils in Sept 2022

IFtL Core Team Structure



Our Governance Structure

IFtL Multi Academy Trust is a Limited Company by Guarantee and as such, must comply with Company Law. As an exempt Charity, IFtL is also required to fulfil Charity Law requirements, these are extended by rules and musts that are determined by the Department for Education (DfE) and the Education and Skills Funding Agency (ESFA). These requirements and rules, along with guidance on best practice in education guide us to create the structure of the organisation and the roles and responsibilities of committees and individuals within. As such, our Multi Academy Trust is led through our governance structure:



Further details about the roles of responsibilities within the structure can be found at www.iftl.co.uk/governance-in-iftl and our Scheme of Delegation



**Inspiring Futures
through Learning**



Registered at Fairfields Primary School
Apollo Avenue
Fairfields
Milton Keynes
MK11 4BA



01908 533283



enquiries@iftl.co.uk



www.iftl.co.uk



[@InspiringFuturesThroughLearning](https://www.facebook.com/InspiringFuturesThroughLearning)



[@IFTL_MAT](https://twitter.com/IFTL_MAT)