



www.cliftonschool.org

Moving up to Clifton Community School

A helpful guide for students and parents

Middle Lane, Rotherham S65 2SN

☎ 01709 515 005

🐦 @cliftoninfo



Welcome to Clifton Community School!

A warm welcome to Clifton Community School.

Clifton Community School is an 11-16 school with 880 pupils on roll. We consider ourselves to be a genuine comprehensive school, catering for a wide range of abilities, needs, aspirations and backgrounds.

At Clifton Community School we want all students to leave able and qualified to play their full part in an ever-changing world. This means we want all of our students to start their lives equipped with not only qualifications, but also the skills and attributes that they will need to deal with the challenges of life beyond their time at Clifton.

As adults, we know that our children will sometimes face adversity and frustration. We aim to work in partnership - parents, students and teachers - to develop our children as resilient individuals with the determination to overcome barriers.

For that reason, we say and do things in a certain way at Clifton: "The Clifton Way". This allows us to promote the skills our children need to develop their independence, responsibility and resilience.



“

‘Teachers and leaders
have high expectations
for what pupils can
achieve.’

Ofsted 2019

We promote a high challenge, low fear environment, where students are encouraged to have a go without fear of making a mistake. Children are encouraged to learn from their mistakes, as the most valuable achievements are the ones they have worked hardest for. Working together, the Clifton Way will help us ensure that our children leave ready to play their full role in the world.

Our vision is to be an Outstanding School, where all pupils have every opportunity to fulfill their potential; a school where our challenging and diverse curriculum and high quality teaching and learning, alongside our supportive pastoral care will secure success and achievement for all. Our school is business-like and purposeful and our students want to learn. Smart dress, good attendance and punctuality underpin our ethos of high expectations.

We are 100% child centered and believe that all children have the right to a quality **education, and we encourage, challenge and support every child. We strive for excellence in everything we do.**

What will I study?

Our 5 year curriculum is flexible and meets the needs of students and is based on the National Curriculum. The planning and sequencing of subjects allows students to make excellent progress.

We aim for every child at Clifton to be fully engaged in learning and leave able and qualified by the time they reach Year 11.

Clifton Community School is committed to a 3 year KS3 experience in order to ensure engagement, breadth and to allow students to follow their own passions and to make appropriate choices.

In Year 7 you will study a wide variety of subjects, some will be familiar and some will be new subjects.

At Clifton you will have access to highly qualified specialist teachers and also have lessons in specialist classrooms. Our facilities include science labs where you will carry out experiments, purpose built dance and drama studios, music classrooms complete with a huge range of instruments and food technology rooms where you can learn to cook.



Our sports facilities include high quality all weather outdoor pitches, and a large sports hall which houses a thrilling climbing wall. In Year 7, you will study the following subjects.

- English

- Maths



- Science (Physics, Chemistry and Biology)

- Geography

- History

- Spanish

- PE

- Design and Technology

- Performing Arts

- ICT

- PHSE



School Day

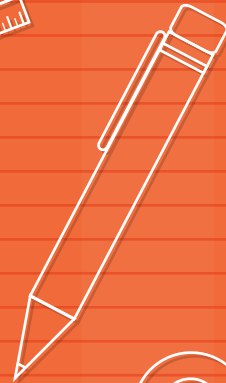
Time	Period
8.45 - 9.00am	Form Tutor Time
9.00 - 10.20 am	Lesson 1
10.20 - 11.40 am	Lesson 2
11.40 - 12.10pm	Break 1
12.10 - 13.25 pm	Lesson 3
13.25 - 13.55 pm	Break 2
13.55 - 3.10 pm	Lesson 4

Students will receive timetables on the first day of term

Equipment

We all recognise that we come to school to learn. In order to do this it is essential that you bring the correct equipment every day.

- ✓ • Pencil Case
- ✓ • Pen
- ✓ • Pencil
- ✓ • Ruler
- ✓ • Coloured Pencil Crayons
- ✓ • Calculator
- ✓ • Compasses
- ✓ • Protractor
- ✓ • PE Kit
- ✓ • Exercise Books / Folders



Attendance

To achieve their best, students must be on time and in school every day.

Students should only be absent if they have a really good reason for being away. Research shows that students with attendance of over 95% produce the best results at GCSE.

Therefore, being in lessons will help your child with their learning. Their attendance will appear in their school reports and is reported to colleges or employers when they leave school.

If there is a problem that prevents your child attending, there is always someone in school who you can talk to about it; your child's Form Tutor or Student Pastoral Manager.

The attendance office will always help you get the support you need.



Illness & Medical Appointments

If your child is ill please telephone the Attendance Team on 01709 538333 before 9am the same day.

For absences known in advance, e.g. a medical appointment, a note must be provided. This should be presented to the attendance office before students sign out. Students should sign back in on their return.

If your child is not at school we need to make sure they are safe. We will text or telephone you to ensure you are aware that they are not in school. It is our duty to investigate unexplained absences either through school or the Early Help Team.

Holidays In Term Time

We will NOT authorise holidays in term time. Any holidays taken will be classed as unauthorised absence from school.

Punctuality

If students arrive after 8.45am they will be registered as late. We value punctuality for a number of reasons: it ensures that lessons start on the most positive footing, it avoids classroom disruption and it minimises wasted time for both pupils and teaching staff. Furthermore, it is an issue that many companies will consider when interviewing candidates for employment or training.

Behaviour and Expecta

We are all members of the school community and it is expected that everyone acts with consideration and courtesy for others at all times.

Code of Conduct

All students are responsible for their own behaviour in and out of the classroom. They should, in each lesson, take personal responsibility for their actions and follow the necessary sanctions placed on them by staff.

Student Classroom Conduct

- **Attend every day:** Attendance is crucial to academic achievement and students that attend everyday are successful in achieving their potential.
- **Arrive on time to school and lessons:** Being punctual is a clear indication that a student is on message and equipped to learn.
- **Wear full school uniform:** Wearing school uniform shows that you take pride in your appearance and proud to be Clifton. It also creates a calm and business like atmosphere.
- **Be equipped to learn:** All students must have a school bag (large enough for books /folders) and a pencil case with basic stationary (Pens, Pencil, Ruler and Rubber as a minimum). Students are also expected to have PE kit and ingredients for food lessons. Students must remove all outer clothing on entering the classroom and get out their equipment.
- **Listen to others:** Students must listen to others and follow the teachers' instructions without discussion. All requests from members of staff should be carried out without argument.

tations



- Be nice to each other: No student should be disrespectful to, or show rudeness towards, anyone in school. Bullying will not be tolerated.
- Mobile phones must be turned off and stored in the students' school bag. They may only be taken out when instructed to by a member of staff.
- Earphones or charging devices in lesson or anywhere on school site are not permitted. If seen they will be confiscated immediately and without exception.

Classroom Teacher Expectations

All classroom teachers are responsible for behaviour for learning within their own classroom. They should, in each lesson, take personal accountability for dealing with incidents and following through necessary consequences and restorative practice to ensure behaviour is approached with consistency.

Where support or additional intervention is needed classroom teachers should request additional assistance from:

1. Key Stage Coordinators (where appropriate)
2. Their Faculty Leader
3. Relevant SPM
4. Head of Year
5. The Senior Leadership Team



“

‘Pupils have access to a huge range of quality activities. This supports their personal development.’

Ofsted 2019



School Uniform

- Clip on tie for all
- School approved trousers or skirt with WPT logo.
- White shirt.
- Black V neck jumper or cardigan with school logo.
- Footwear must be plain black leather with no stripes or logos.
- Make-up should be discreet and minimal with no false eyelashes, false finger nails, bright or garish nail colours.
- Extreme haircuts are not allowed. It is the School's discretion as to what constitutes 'extreme' but usually involves shaven heads, multi-coloured or unusually coloured hair.
- Jewellery must be kept to a minimum; no more than one small earring, sleeper or stud in each ear. No other facial and body piercings are allowed on school site.
- Gold, silver and bronze award pin badges should be worn as part of school uniform.

Please note: Protective clothing is required when pupils use the school workshop and other craft facilities and these will be provided by the school.

PE Kit

The compulsory PE kit consists of:

- Clifton Community School burgundy T shirt
- Clifton Community School burgundy hooded top (optional)
- Black socks
- Black shorts or tracksuit bottoms
- Sports trainers
- Jewellery must never be worn during games or PE lessons.
- Hair should be tied back.
- Please put your son's/daughter's name on to items of PE kit





Clifton**Extra**

Clifton Extra

Taking part in extracurricular activities is a vital part of school life and at Clifton we offer a fantastic range of clubs to all students. These activities provide students with experiences they will remember in the future and also build invaluable life skills such as determination, resilience and confidence. It's also a great way to make new friends and work in teams.

As part of a team, you will be given the opportunity to represent school at events and matches. All our students are expected to show the same high standards out of school, as they do in school, both in behaviour and uniform. A lot of hard work goes into building great teams and regular participation and practice is expected in order to be selected for such events.

In order to enable all students to take part in extracurricular activities, we offer a full timetable of clubs across the week, including breaks and after school. Some football matches will also take place on Saturdays.

Here are just a few of the clubs you could take part in:

- Football
- Netball
- Choir
- Soul Band
- Dance
- Art
- Badminton
- Climbing
- Music lessons
- Athletics
- Spanish
- Games club





The Clifton Way

We say and do things in a certain way at Clifton, referred to as 'The Clifton Way.'

The Clifton Way allows us all to promote the skills and attributes you need in order to develop independence, responsibility and resilience to have a happy and successful life.

It defines who we are and what we stand for at Clifton Community School.

The Clifton Way:

1. We are nice to people
2. We say please and thank you
3. We are equipped to learn – bag, pencil case
4. We work hard
5. We are prepared to make mistakes – high challenge, low fear
6. We listen to others – discussion and debates
7. We believe in ourselves
8. We are proud of our achievements – everything - rewards
9. We take pride in our appearance- insist on uniform
10. We take responsibility for our actions – not turning up to detention etc.
11. We dream big
12. We take risks

Working together in this way will help us all to ensure that Clifton students leave school able and qualified and ready to play their full part in the world.



“

‘Pupils are proud to be part of the school and talk very positively about the ‘Clifton Way’.’

Ofsted 2019



Clifton Pledges



At Clifton we believe that we should send our students out into the world able and qualified and with basic life skills that will last a lifetime. The Clifton Pledge encourages students to engage and take part in experiences which will help them to understand the world around them and be able to play a positive role in their community and beyond.

The Clifton Pledge is designed to make students more resilient, independent, confident and determined. The Clifton pledge has a Bronze Silver and Gold award and these are presented throughout the year at awards ceremonies.

The Clifton Pledge is divided into the following three categories, with examples of some of the tasks you may carry out.

Life Skills

- Work as part of a team or group
- Create a revision resource
- Show independence at home

Cultural Experiences

- Regularly attend an extracurricular club
- Go on a school trip
- Understand local geography

Active Citizenship

- Help out at a school event
- Fundraise in school
- Learn a greeting in 5 different languages

“

‘The ‘Clifton pledge’ guarantees pupils a variety of experiences.’

Ofsted 2019

Data and Reporting



Target Setting

Students will complete baseline tests in Maths, English and Science. We use these scores to set targets in Year 7 and 8 in all subjects. These targets are the levels we expect students to achieve in each subject. They are realistic, so every student is capable of achieving their target; they are also aspirational, encouraging students to strive to attain the best possible level.

Students will be given one of the following 6 target levels in each subject:

Greater Depth

Working Towards Greater Depth

Expected Standard

Working Towards Expected Standard

Entry Level

Working Towards Entry Level

Objectives and Assessment

Subject leaders have created objectives that will be covered each term. All of the objectives have then been classified as one of the following levels:

Greater Depth – These objectives are more challenging and empower students to demonstrate what they know, and can do, beyond what is expected.

Expected Standard – These are the objectives that students should meet on a regular basis to be deemed on track to expected progress. They are the non-negotiables.

Entry Level – These objectives include basic skills and knowledge within topics and units of work.

Each term, teachers decide whether students have successfully demonstrated a sound understanding of each objective. Objectives are revisited numerous times in a year so students can show improvement.

Data Collections & Reports

You will receive a Data Report for your child three times per year. For each subject they will include the following **Attainment Data**:

Target Level – This is the level that your child should aim for.

Current Attainment – This is the level that your child is currently working at.

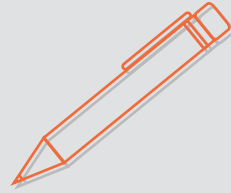
Progress Comment – This states whether your child is on track to meet their target.

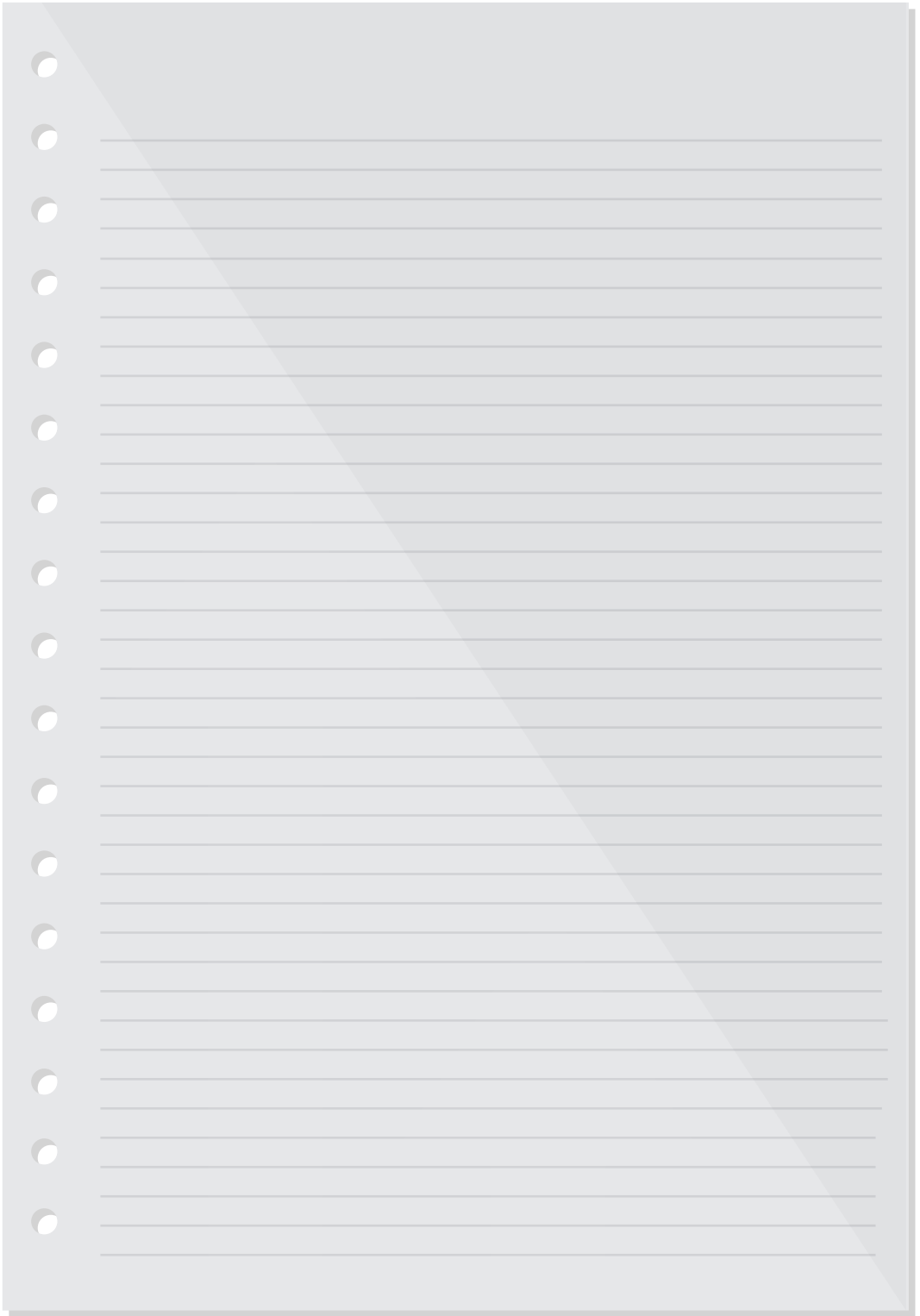
There will also be a “**breakdown**” of the objectives your child has studied during the term. Here, you will be able to see how many objectives they have mastered successfully. Some of the objectives that your child has not yet achieved will be included in the report as a subject specific target.

Effort

Alongside attainment data, students will also receive an Effort Grade in each subject from their teacher. Effort is graded as: Excellent, Coasting, Requires Improvement or Poor. This gives you an insight into your child's behaviour and attitude in lesson. All students are capable of achieving 'Excellent' for effort, regardless of ability.

Notes Page









Clifton Community School
Middle Lane
Rotherham
S65 2SN

01709 515005

info@cliftonschool.org

Enquiries to be addressed to Mrs M Payton, Headteacher's PA