



EASTBURY FARM
PRIMARY SCHOOL
& NURSERY

Nurturing and developing our children for the future

‘Equality and diversity are promoted well.’

‘Pupils make strong progress.’

‘Behaviour in lessons and at different times of the day is outstanding. Pupils are courteous, show respect to each other and support each other well. They enjoy school and work hard in lessons.’

‘Teachers excite and motivate pupils.’

‘Pupils exceed expectations for their age.’

‘The curriculum includes a wide range of opportunities.’



Welcome from the Headteacher

Welcome to Eastbury Farm Primary School; I am delighted that you've picked up our brochure and are interested in finding out more about the exciting opportunities we offer to all of our pupils.

I am often asked by parents what they should look for in a school. My answer is always to visit in order to get a true sense of the spirit, vision and drive of the leadership team, staff, pupils and the school itself as a whole. The feeling you gain will tell you if it is the right setting for your child and I am confident you will leave Eastbury Farm with a feeling of warmth, community and excellence.

Visitors to our school often comment on the strong sense of ambition and diversity they feel; our highly motivated pupils, dedicated staff, knowledgeable governors and our committed families all work together to create a positive and inspiring learning environment which we are extremely proud of. With vast school grounds, which provide a wealth of learning opportunities both in and out of the classroom, combined with our carefully mapped, broad and creative curriculum, we ensure every child has the opportunity to succeed and find their own strengths and talents during their time here with us.

We work hard to preserve a careful balance between the academic, creative, emotional, physical and spiritual needs of our pupils; through the extra-curricular and wider opportunities we offer, our pupils leave us as well-rounded, confident and courteous individuals.

I look forward to welcoming you to our school so you can see for yourself how we are committed to nurturing and developing each individual child in every way possible.

Rebecca Workman
Headteacher





Why Eastbury Farm?

Successful
Learners

Confident
Individuals



Effective
Contributors

Responsible
Citizens

Our extensive school grounds and specialist teaching spaces have allowed us to develop an engaging curriculum and offer exceptional education for all. Our music studio, STEM room, pastoral support room – ‘The Zone’, library, allotment, ‘Forest School’, outdoor classroom, fields, playgrounds, state-of-the-art IT equipment and well-equipped spacious classrooms all provide opportunities for every pupil to learn in a variety of ways and to develop and find their own talents.

Communicating and engaging with our families is of great importance; we run a variety of parent workshops every year to help our parents support their children effectively at home as well as gain a greater understanding of the work we do in school. This partnership is highly valued and promoted through our ‘open-door’ policy.

We promote both academic and personal progression, providing as many opportunities as possible to develop the whole child. We offer a wide range of extra-curricular activities before school, after school and during lunch times and are passionate about developing outdoor learning, the arts, sports, community engagement and creating young leaders.

Our learners are engaged, resourceful, reflective and well behaved, which ensures their learning time is maximised. They leave us as confident, grounded, respectful and responsible young people, who are proud of their school and everything they have achieved.

‘Pupils spiritual, moral, social and cultural development is a strength of the school.’
Ofsted, May 2018



Encouraging Excellence

We are extremely proud of our academic results; at the end of each Key Stage, our pupils consistently achieve results well above both National and Hertfordshire averages. As a result, at the end of Year 6, they usually move on to the secondary setting of their choice. In recent years, they have gained places at many of our local desirable and prestigious state and private schools.

In order to fully utilise our unique teaching spaces and opportunities, we employ a native Spanish Teacher, a Sports Coach, a Pastoral Teacher and Music Teachers to ensure these specialist subjects are taught to the highest possible standard and in a way that inspires our pupils and further develops their skill sets.

We are able to boast a very able and experienced staff team, an effective and skilled Governing Board and a truly committed and efficient Parent-Teacher Association, which raises valuable funds for the school throughout the year. All adults working with the school have the development and welfare of each individual child at the heart of all they do.

Termly Educational Visits are used to further enhance and enrich our curriculum and our Year 6 pupils gain a huge number of skills and experiences during their residential PGL trip.

Our children regularly build their confidence and speaking skills by taking part in a variety of performances for both parents and the local community and are encouraged to discuss, debate and consider their own views on important issues at every opportunity. This in turn helps them discover who they are in preparation for a successful future.





'The staff are very committed and go above and beyond to ensure our children's well-being and learning needs are met.'

Year 6 Parent

'Our teachers are very helpful. They think carefully about our learning and make it fun.'

Year 5 Pupil

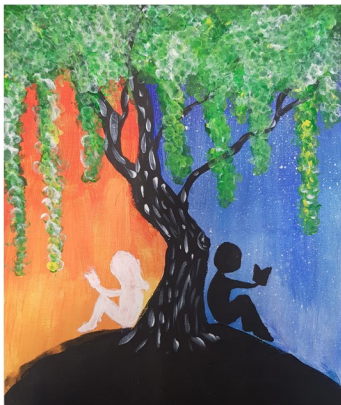


'Eastbury Farm Primary School combines nurture with education in the best possible way. My children feel safe and happy and love to go to school. The smiles at the end of the day are a testament to the hard working staff, who put so much heart into what they do to bring out the best in their pupils.'

Year 2 Parent



Your Invitation



By Sakina, Year 5 Pupil

We would be delighted to welcome you for a tour of our school, where you will be able to meet our enthusiastic pupils and staff and see for yourself our stimulating and extensive learning environment. This is the perfect opportunity for you to also ask any questions you may have about our school community.

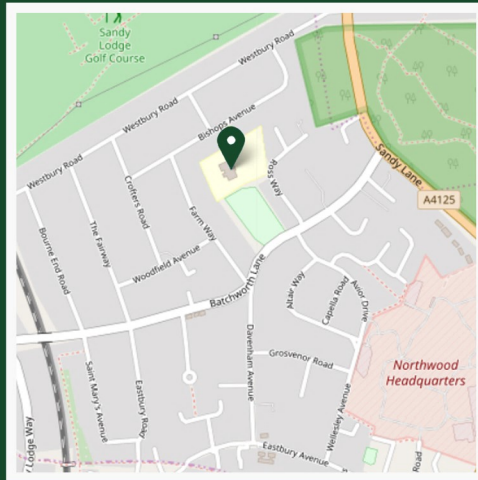
We warmly welcome visits from parents of prospective pupils during term time and encourage you to contact our school office to arrange a convenient time.

Office hours (term time): 8.00am – 4.30pm

Tel: 01923 824 543

Email: admin@eastburyfarm.herts.sch.uk





*Eastbury Farm Primary School
Bishops Avenue
Northwood
Middlesex
HA6 3DG*

Tel: 01923 824 543

*admin@eastburyfarm.herts.sch.uk
www.eastburyfarm.herts.sch.uk*

