



Headteacher Recruitment Pack

**Holly Hill
Church School**
Live life in all its fullness

*Please God,
Help us to do all
the good we can,
In all the ways we can,
In all the places we can,
To all the people we can,
As long as ever we can.
Amen*



Welcome to Holly Hill Church School



A letter from our Chair of Governors

Thank you for expressing an interest in applying for the headteacher vacancy at Holly Hill. We are a two form entry Methodist and Church of England Infant and Nursery school and governors are seeking an outstanding and inspirational leader with a proven track record, who has the energy and drive to bring clear vision and strong strategic direction to replace our current head who is moving to his next challenge in headship. The role would suit an existing head looking for a new challenge or an experienced deputy head wishing to step up in their leadership.

Holly Hill has clear church school distinctiveness where worship is integral with everything we do. We seek to employ a headteacher who is committed to upholding and promoting the Christian ethos and values of the school, helping every child to experience "life in all its fullness" (John 10:10).



Holly Hill is situated in Frankley and serves one of the most deprived areas of Birmingham. Candidates must welcome the opportunity to improve the life skills of our children and to have high expectations and encourage aspiration by providing excellent quality education for all. The new headteacher must be outward looking and willing to lead the school through future education developments. Inclusion is at the heart of the Holly Hill curriculum and the new headteacher must be adept at excellent SEND practice, pastoral provision and be committed to continually improving the quality of teaching and learning.

As a dedicated and active governing body, we can offer you enthusiastic children, a skilled and committed staff team and a school that values wellbeing and professional growth. We strongly encourage visits to school prior to application.

I look forward to receiving your application.

Mrs Karen Handford



Our Vision

As a Christian school our vision is to serve the families of one of Britain's most disadvantaged areas by transforming children's opportunities through immersion in high quality education. Holly Hill Church School promotes a nurturing environment where every child is transformed educationally, socially and spiritually. It is with the firm foundations of knowledge, pride and self-belief that our children will develop their interconnected relationships with the wider world.

'Life in All its Fullness' (John 10.10) is the foundation stone for our high expectations of all our families and partners to work together to affect change from within the heart of this community. Children will be encouraged to develop strong aspirations and a desire to make a positive difference in a society faced with continual challenges. To face these challenges, we need to nurture in them resilience, understanding and the desire for peace.

In our school, we see Jesus' promise of 'Life in all its fullness', as we create together:

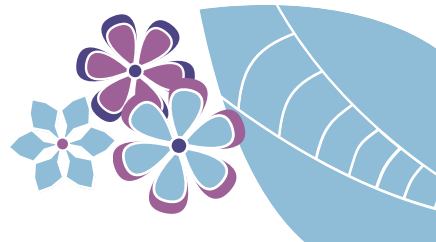
- a place where we watch over one another in love,
- a place of healing
- a place of growth
- a place where everyone can find wholeness
- a place where those who have less, are given more
- a place where we see each other as God see us



Life in all its fullness

Our Aims...

- To deliver a high quality teaching and learning experience for our pupils that promotes high standards and accelerated progress for all
- To promote a love of education for all learners and to equip them with the tools to take ownership of their own learning
- To promote children's self-esteem yet to instil in them their responsibilities for themselves, to their community and God's world
- To create a welcoming school where children, staff, families and visitors feel valued
- To have high expectations for all within our community to ensure that we demonstrate the very best standards of conduct, moral purpose and integrity



Our values

12 Christian values:



It is within our Christian ethos that this vision has been developed and will be implemented.

Holly Hill's Context:



Holly Hill Church School is a two-form entry Infant and Nursery School in Frankley, serving a diverse and disadvantaged community.

We are proud of our inclusive ethos, strong relationships and commitment to high quality education. Currently we have 70% of children eligible for Pupil Premium and almost 40% SEND.

Reading is at the heart of our curriculum and we strive to ensure every child thrives with a bold curriculum based on aspirational people.

We work closely with families and the wider community to support every child.

Holly Hill is proud of:

- A good OFSTED report (Jan 2023)
- A successful SIAMS inspection (June 2024)
- Our inclusive practice - currently we have 20 children with an EHCP and a specialist class of children with complex needs
- Excellent progress data. All children are expected to achieve and make good or better progress
- Our outward looking and collaborative approach to education



We are seeking a headteacher to build on our strong foundations.

The Successful candidate will:

- Ensure all children make expected progress or better
- Sustain and develop high-quality SEND provision
- Maintain high quality teaching and learning
- Uphold and promote the Christian vision of the school
- Be a leader who will champion every child.

What we offer:

- A dedicated and supportive staff team
- An experienced and capable Senior Leadership Team
- A loving community based on relationships
- A strong and supportive Governing Body
- Enthusiastic and engaged children
- A strong culture of wellbeing and work-life balance
- A well-resourced school
- Opportunities for professional growth

The Role: Leading the next phase



How to apply

Life in all its fullness

Please apply by completing an application form and returning it to vacancy@hollyhill.bham.sch.uk

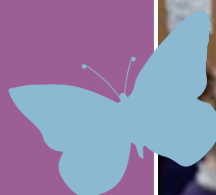
To arrange a visit please contact the school office on 0121 675 8700.

Closing date: 9:00am Monday 8th June

Interviews: 18th and 19th June

Leadership Scale 15 - 20

Start date: January 2027 or sooner if possible.



Holly Hill Church School
New Street, Rubery, Rednal, Birmingham, B45 0EU
Telephone: 0121 675 8700
Email: enquiry@hollyhill.bham.sch.uk
Website: www.hollyhill.bham.sch.uk

