



Wigmore School Academy Trust

Recruitment Information

Wigmore School, Ford Street, Wigmore HR6 9UW



Introduction

Dear Applicant,

Thank you for showing an interest in the advertised post. I hope this information pack will give you a small insight into our fantastic Academy Trust.

We are very proud of the achievements of our schools. Children are committed to their learning, enthusiastic and keen to do well. Behaviour in lessons is outstanding, allowing children to make excellent progress. Everybody knows each other well and there is a strong team ethos amongst the staff across both establishments.

We are committed to the professional development of our staff and meet regularly to train each other on best practice. We pride ourselves in recruiting and developing outstanding teachers and have a strong track record of promotion within the Trust. New staff are fully supported when joining the school with a comprehensive induction programme.

If you are an outstanding teacher who is ambitious for all children to do well, I hope you decide to apply for this post. For answers to any additional questions you may have prior to interview, please contact Miss Lorna Philip (Headteacher's PA) via e-mail at recruitment@wigmore.hereford.sch.uk

To apply for the advertised position, please could you complete:

- an application form (electronically);
- a covering letter stating how you meet the criteria in the person specification. (no longer than 3 sides of A4 and font size 11 or above).

Please email your application documents to recruitment@wigmore.hereford.sch.uk or send a hard copy to the school, addressed to me, by midday of the closing date. Shortlisting will take place immediately, with interviews taking place the following week. We will personally contact all applicants who have been shortlisted for interview.

I look forward to receiving your application.

Yours sincerely

Dr Rob Patterson

Dr Rob Patterson
Executive Headteacher





A warm welcome from staff and pupils alike.



Senior Student Team 2025-2026

As you come to choose your next school in your career, we thought we would try to give you a flavour of our school in this brochure to help you make a more informed choice.

We are hoping that you will agree with us that as a small rural school we provide a unique environment and memorable experience that can be difficult to achieve in some of the larger schools.

We do more ... at Wigmore.

Ethos and Values

Trust Motto

“Enjoying Learning Together”

Mission Statement

We embrace the benefits of all-through 2-16 education providing excellent all-round educational experiences in a nurturing environment of traditional values.

Our Aim

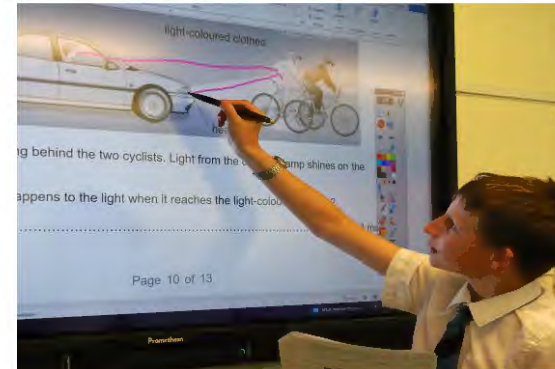
We aim to ensure every child is happy, safe and successful.

Our Vision

We strive to provide the best education locally, inspiring our children to exceed expectations and develop into resilient, well-rounded, independent young people who are equipped to flourish in a modern global community.

Our Values

- Empathy
- Equality
- Honesty
- Resilience
- Respect
- Teamwork





The Wigmore School Academy Trust

The Wigmore School Academy Trust is in the village of Wigmore in North Herefordshire, some 20 miles from the cathedral city of Hereford, ten miles from the historic market town of Ludlow in South Shropshire, and close to Knighton and Presteigne, just across the border in Wales. It is a beautiful part of England with easy access to the magnificent countryside of Herefordshire, Shropshire and mid-Wales.

We are a highly successful Nursery, Primary and High School situated in the stunning surroundings of North Herefordshire. We cater for children from 2-16 years of age in two separate schools.

The schools have existed for over 50 years, federating in 2008, academising in 2011 under the umbrella of one academy trust, and establishing a Nursery in 2012.

In the local community, we have an enviable reputation for high standards, providing a quality education in a safe and welcoming environment. Behaviour at both schools is outstanding. As a result of our successes, we are the school of choice in the area.

Our motto is “enjoying learning together” which encompasses the shared vision to develop the notion of and celebrate the benefits of all-through education.

Our mission is to provide excellent all-round educational experiences in a nurturing environment of traditional values. We aim to ensure every child is happy, safe and successful. We strive to provide the best education locally inspiring our children to exceed their potential and develop into resilient, well-rounded, independent young people who are equipped to flourish in a modern global community.

Ofsted quote 2023

“Wigmore is a friendly, welcoming school. Pupils have a common understanding of the importance of values like empathy, equality and teamwork . This results in positive relationships and a shared commitment to their learning.”

“Pupils engage positively with their learning tasks, from talking confidently in French and Spanish to the quality of their writing in English. They achieve strong outcomes by the time they leave the school.”

“Staff have high expectations of pupils’ behaviour and pupils usually meet these. Pupils arrive to school in a calm and orderly way greeting the staff on duty. Pupils get on well with each other at social times whether playing football or enjoying their lunch picnic style on the field.”





Our pupils achieve their potential academically with many exceeding expectations. We place a strong emphasis on developing the whole child and therefore, work hard to provide an all-round education for our pupils. We offer many different experiences inside and outside the classroom, e.g. Duke of Edinburgh, foreign expeditions, forest school and values education, to ensure our pupils have access to a variety of different learning experiences.

Our staff and pupils are proud of our school, its high standards, its values and its strong emphasis on personal development. We believe that our children deserve the best education possible and values that prepare them for the future.

We welcome all children to our school and guarantee to look after them, nurture them and provide them with the best education possible.

The High School has traditionally been over-subscribed for admissions into Year 7. The planned admission number for the Primary School is 30 children for the Reception Class and 90 pupils for Year 7 at the High School.

Wigmore School Academy Trust works closely with other neighbouring schools, including those in the local cluster, and has developed good links with a wider network of schools.

Our Vision for the Trust

We want to do more at Wigmore

Wigmore Primary and High Schools have been successful schools for many years and have provided a high quality of education to generations of children and pupils in their respective phases of education.

At its core, our vision is that both schools will continue to raise standards by utilising the benefits accruing from academy status. The Trust expect that, across the 2-16 age range currently on the Wigmore School site, every pupil should make the sustained progress necessary for them to reach the highest academic standards possible. We want the pupils to enjoy and profit from their time at the school, to be safe, to make friends, to develop many interests and to experience the wide range of activities on offer that will help them grow and develop as individuals. Wigmore pupils should leave the school at 16 having received a well-rounded education and having achieved GCSE results and other qualifications that reflect their academic ability and exceed their expectations.

Wigmore School is fortunate to have teaching staff of the highest calibre, with excellent support staff across the whole range of the school community. The pupils are delightful, and keen to learn, and the school benefits enormously from the support of parents and the local community.

The end of Key Stage 1, 2 and 4 results are generally significantly above national averages and attainment values in 2025 are set to be well above average. There are very high standards of behaviour. Staff have high expectations of pupils, and we believe that Wigmore School Academy Trust is an outstanding setting for pupils to learn.

The stakeholders at Wigmore School Academy Trust have jointly developed 6 key aspirations for the schools. We aim to maintain the schools' outstanding strengths and move the schools forward by becoming or continuing to be a:



Community School

We will be at the heart of the local community and encourage participation in the global community.



Outstanding School

We will provide outstanding experiences for all our young people ensuring outstanding outcomes.



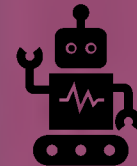
Stakeholder School

We will listen to and engage all stakeholders in the future direction of the school.



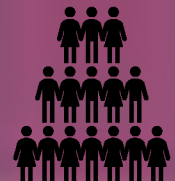
Innovative School

We will make use of research and explore new pedagogical strategies to become system leaders in education.



Technology School

We will strive to ensure that our young people benefit from and are aware of the latest technology.



Expanding School

We will expand our school community if it will benefit the children, staff and local community.



CURRICULUM

At Wigmore we offer an innovative, broad and balanced curriculum which meets the needs of individuals whilst creating the best conditions for all our pupils to excel and succeed to the best of their ability. We believe that our curriculum offers a wide range of opportunities for every pupil.

Pupils study the full range of national curriculum subjects, and we also provide a wide range of additional experiences to support academic subjects. Opportunities for pupils encompass visits linked to curriculum areas, work related learning experiences and residential trips which encourage confidence and independence. We believe that our curriculum offers a wide range of opportunities for every student.

EXTRA CURRICULAR ACTIVITIES

The schools offer extra-curricular activities through clubs, trips and visits. The Primary School offer visits to local places to give pupils the experiences that make their learning come to life. Years 5 and 6 are offered a residential experience to support team building and in preparation for High School.

The High School offers the opportunities for pupils to experience residential trips in all years, some in the UK and others abroad. There are also many day trips that underpin the curriculum such as theatre trips, art galleries, music concerts and geography field trips to name but a few.

Both the Primary and High Schools offer outstanding opportunities for sport. Children take part in after school sports clubs and fixtures covering a range of traditional sports (netball, hockey, rugby, football, rounders and cricket) as well as clubs in specialist sports such as badminton, trampolining and futsal and enjoy the use of a newly refurbished school gym.

Every year both schools put on performances in drama and music, ranging from music concerts, nativities and school productions. These experiences are an essential part of life at Wigmore.

STUDENT SUPPORT

We have high aspirations for all our pupils. It is the responsibility of every teacher to deliver inclusive lessons that enable every pupil to participate and reach their potential. Wigmore School actively promotes Quality First Teaching and believes that the effectiveness of this provision is key to successful learning. This is an entitlement for all learners.

The Student Support Centre opened in January 2011 to provide a dedicated place to enhance the support provided to students across the school. We have specialist non-teaching support staff to assist students with any pastoral or special educational needs. The Centre has three rooms for one-to-one or small group work, as well as a large classroom-style space. The Student Support Team are also based within the Centre.



Governance

Board of Trustees

The Academy was incorporated on 10th December 2010 and commenced as an Academy Trust from 1st January 2011.

The Academy Trust is a company limited by guarantee and an exempt charity. The Charitable Company is known as Wigmore School. Wigmore's Memorandum and Articles of Association are the primary governing documents of the Academy Trust.

The Academy is governed by the Board of Trustees, who are also the directors of the company. The Academy Trust Board work to fulfill a largely strategic role in the running of the school.

Wigmore School is a federation of two schools: Wigmore High School and Wigmore Primary School. The individual schools have separate funding agreements but form one company.

School Performance 2025

Key Stage 2

Key Stage 2 Average Scaled Scores 2025	School	National Average
Average Scaled Score in reading	114	106
Average Scaled Score in mathematics	109	105
Average Scaled Score in GPS (Grammar, Punctuation and Spelling)	114	105

Key Stage 2 Average Scaled Scores 2024	School	National Average
Average Scaled Score in reading	109	105
Average Scaled Score in mathematics	111	104
Average Scaled Score in GPS (Grammar, Punctuation and Spelling)	111	105

Key Stage 4

2025 results (Unvalidated)	School	National Average
Attainment 8 Score	48.3	TBC
Percentage of pupils achieving a Grade 5 or above in English and maths GCSEs	39%	TBC
Percentage of pupils entered for EBacc	17%	TBC
EBacc average point score	4.13	TBC
Percentage of pupils staying in education and employment after KS4	TBC	TBC

2024 results (Validated)	School	National Average
Progress 8 Score	-0.32	-0.03
Attainment 8 Score	46.2	45.9
Percentage of pupils achieving a Grade 5 or above in English and maths GCSEs	36%	46%
Percentage of pupils entered for EBacc	35%	40%
EBacc Average Point Score	4.13	4.07
Percentage of pupils staying in education and employment after KS4	93%	93%

Senior Leadership Team

Dr Rob
Patterson
Executive
Headteacher



Mrs Kate
Mayclothling
Assistant Headteacher
and SENCo (High)



Mrs Rebecca
Williams
Head of School and
SENCo (Primary)



Mr Daniel
Jones
Deputy Headteacher



Mr Paul
Bescoby
Assistant
Headteacher (High)



Mrs Emma
Jenkins
School Business
Leader