

A foundation for success since 1932



Dear Candidate

On behalf of the governors at Ribblesdale School, thank you for the interest you have shown in the role of KS2 teacher at our school. This post has arisen due to the extension of the school's age range to become an all-through school welcoming pupils from the age of 4 to 16. This is a once-in-a-lifetime opportunity to help create and shape a brand-new primary provision for the community of Clitheroe, by becoming the teacher responsible for our first ever Year 3 class.

The successful candidate will be responsible for the day-to-day teaching and care of our Year 3 class in our fantastic, brand-new primary phase building which has been constructed on the Standen Estate. The governing board is seeking to appoint an experienced, highly skilled and knowledgeable KS2 practitioner who will create a warm and welcoming learning environment, foster high aspirations and challenge our pupils to achieve to the very best of their potential.

Our expert, friendly teaching and support staff work hard to ensure that our school continues to grow and improve, keeping our pupils' development needs at the heart of all we do. Our 'Road to the Ribblesdale Way' encapsulates the core beliefs and expectations we hold for our pupils and staff. Ribblesdale School is a Microsoft Showcase School and a founder member and key contributor in the North-West EdTech hub. Every pupil in our care benefits from our Ofsted Grade 1 personal development programme which incorporates our unique enrichment curriculum.

Ribblesdale is a popular and successful school, which enjoys close links with the local community it has served for more than 90 years. I would positively encourage candidates to visit Ribblesdale School to better understand the ethos and atmosphere of our learning community. Thank you, once again, for your interest in working at our school. I look forward to receiving your application.

Bernadette Matterson
Chair of Governors

WELCOME FROM THE CHAIR OF GOVERNORS





KEY STAGE TWO TEACHER

Required from September 2026

Are you an experienced, highly skilled and knowledgeable KS2 teacher who is seeking a once-in-a-career opportunity to help shape and build Ribblesdale's new primary provision?

We are seeking a skilled and dedicated KS2 teacher to support us in delivering the very best education for our first Year 3 cohort and help us to foster in them a life-long love of learning. Ribblesdale School has recently become a 4-16 all-through school. Our primary phase opened in September 2023, and is based on a separate site to the high school in a brand-new, purpose-built facility on the Standen Estate. The provision is for a one form entry primary phase and its roll will increase incrementally each academic year. We are looking to appoint a teacher to complement the large, talented and highly committed staff of our through school. We want someone with a genuine drive and commitment to delivering the highest standards, as well as a love of teaching and the desire to make a difference.

This is a new post to the school and one which will provide outstanding professional development opportunities for an aspirational colleague who is keen to have a significant impact and make a lasting difference to the life chances of our young people.

Thank you for your interest in our school. I hope that this applicant information pack gives you a flavour of our vibrant and thriving school community. We are incredibly proud of all we have achieved over the last 90 years and more, and ambitious in our plans for the next chapter of our school's onward journey.

We are currently a larger than average, truly comprehensive 4-16 co-educational local authority maintained school with over 1400 pupils on roll. The last few years have seen us grow considerably as part of a local authority expansion project which led to the enhancement of our site and facilities and then, in a further 'vote of confidence' from our LA and local community, through the expansion of our age range, to become an all-through school for pupils aged 4 - 16. Our fabulous brand new, net zero building opened in September 2023 to welcome our very first reception cohort.

Pupils at Ribblesdale are challenged and nurtured in equal measure. We prize the growth of positive, well-rounded citizens as highly as we do academic success, pursuing both with vigour and commitment. In our last inspection (July 2025), Ofsted commended our ambitious and well designed curriculum and rated our Personal Development provision 'outstanding'.

Opportunities for Ribblesdale pupils are rich and varied: our innovative use of education technology has seen us recognised as a Microsoft Showcase School and our unique Enrichment Programme helps pupils foster their talents and gain new skills and experiences, extending learning well beyond the classroom walls.

I hope you find the information in this recruitment pack useful and that you will be encouraged to apply to join our professional community. I guarantee you will be warmly welcomed and that, should you be successful, you will experience a wealth of opportunities in joining us at this very exciting time.

ABOUT OUR SCHOOL





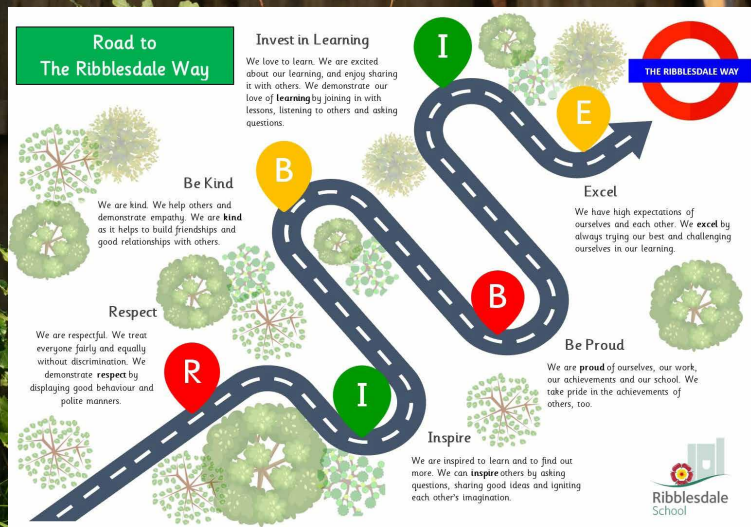
OUR CURRICULUM

At Ribblesdale we offer a broad and balanced curriculum to all year groups, which is accessible and delivered through great teaching; details can be viewed in the Curriculum Overview documents on our website. This is further enhanced and complemented by an exciting Enrichment offer, designed to support pupil progress. Character education and development of the whole person is a key theme of our rich and varied curriculum, alongside academic excellence and superb pastoral support. The structure allows targeted and timely intervention to take place across many aspects of the school curriculum. All young people take part in Enrichment, which encompasses the development of moral, social and British values alongside skills and attributes for the future that include teamwork, organisation, leadership, presentation skills, collaboration, independence, reflection and self-confidence.

Our primary-aged pupils benefit from access to secondary facilities and specialist teaching as well as the state of the art, brand-new building in which they are based. Our constantly evolving and responsive curriculum utilises technology across the entire age range to enhance and empower learners both in school and beyond our gates.

At the heart of every aspect of the school is 'Road to the Ribblesdale Way' (and the 'The Ribblesdale Way' for our secondary-aged pupils) which represents our core beliefs and our expectations of both pupils, and of those who work within the school. These key principles, behaviours and values provide a framework for our approach to teaching and learning, our rewards and sanctions policies and the mission and aims of the highly successful personal development programme which shapes Ribblesdale pupils into successful, well-adjusted adults capable of contributing fully and positively to 21st century society and to the global community to which we all belong.

THE RIBBLESDALE WAY





PERSONAL DEVELOPMENT AT RIBBLESDALE

Enrichment is an integral part of the school week at Ribblesdale and aims to provide our pupils with a range of skills, experiences and opportunities that they may not otherwise have, both within the National Curriculum and from home. Just as in other subjects, teachers plan lessons for our pupils to secure progress against a range of learning objectives to support the development of skills for life.

Our 'outstanding' Enrichment programme, which has been running successfully for many years, is fully funded by the school and every activity is assessed and accredited. We continue to deliver a diverse range of activities in which secondary pupils can participate on Wednesday afternoons - from volunteering in the community to first aid courses, fitness activities and opportunities to improve in debating and enterprise skills. Similarly, our primary-aged pupils access the 'Ribblesdale GREATS' - fifty enriching opportunities designed to build life skills and provide cultural capital - as well as visiting speakers, trips and visits.

We are well supported by our local community with involvement from Blackburn Rovers, Blackburn College, Crossfit, Roefield, Edstart and many more providers in the local area. More information is available through our social media and on our school website.

Enrichment is just one element of our far-reaching and comprehensive personal development programme. Covering online safety, careers education, relationships education, PSHE, literacy, numeracy and mental health and wellbeing among other important topics and life skills, 'My Future Matters' gives every Ribblesdale pupil an excellent foundation from which to embark upon a happy, successful and fulfilling life after school.



HOW TO APPLY

Please send in your application form (which can be found on our website) and a supporting letter addressed to the Headteacher (no more than 2 sides of A4, Arial 11) detailing the qualifications, skills and experience which equip you for this role via Annmarie Hough at vacancies@ribblesdale.org no later than 9.00 am on Friday 27th February 2026.

Tours of the Primary School are available on the following days:
Tuesday 24th February at 4.00 pm
Wednesday 25th February at 4.00 pm
Please email primary@ribblesdale.org to confirm your attendance.

Observations to take place week commencing 9th March 2026.
Interviews to be held week commencing 16th March 2026.

Secondary – Ribblesdale@Queens
Queens Road
Clitheroe
BB7 1EJ

☎ 01200 422563

✉ enquiries@ribblesdale.org

f ribblesdalesch

📷 ribblesdaleschool

in Ribblesdale School

Primary – Ribblesdale@Standen
Higher Standen Drive
Clitheroe
BB7 1FT

RIBBLESDALE CONTACT DETAILS

