

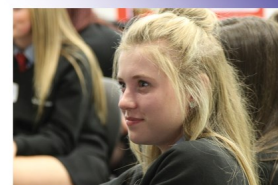
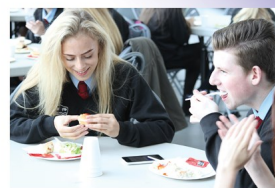


# DARWEN VALE

An Aldridge Community Academy

Darwen Vale High School  
Blackburn Road, Darwen,  
Lancashire, BB3 0AL  
Principal: Mr Matthew Little  
Tel: 01254 223000  
Email: [contact@darwenvale.com](mailto:contact@darwenvale.com)

11- 16 Aldridge Community Academy. 917 on roll



## Lead Teacher of Maths

**Full-time, permanent. Required for September 2021**

**MS/ UP Scale with TLR negotiable for the right candidate**

Darwen Vale High School is an Aldridge Academy and as such, part of the national multi academy trust. At a more local level we are part of the North West Cluster of schools that includes 2 other secondary schools and 1 primary school. As our numbers grow, we need an inspirational Teacher of Maths to deliver high quality lessons to pupils across years 7 -11.

This is an exciting time to join the Trust. We are committed to school improvement based around the methodology espoused by the Uncommon school's approach. We are focused on the three school improvement levers that we believe will have the greatest impact on student experiences and outcomes:

Culture  
Data Driven instruction  
Coaching

Applications are invited from well-qualified and enthusiastic candidates to teach Maths at Key Stages 3 & 4 in this forward thinking 11-16 academy which is improving rapidly. The Academy is committed to building a team of exceptional leaders and teachers in a positive and supportive learning environment. This post would suit an experienced teacher who wishes to develop his/her career in a positive learning environment where staff are committed to the success of the pupils.

In September 2012 the school moved into its award-winning new school building which retained the iconic frontage of the old Grammar school whilst providing state-of-the-art modern facilities.

We can offer:

- \* World class facilities, including 3G sports pitches, Mac suites, and 7 ICT rooms, a Dance studio, drama studio, sports Hall and amazing Art studio with terrace overlooking the Darwen Moors.
- \* Great location; straight off Junction 4 of the M65 and within a 30-minute commute for most places in Manchester and Lancashire.
- \* Outstanding CPD opportunities (see coaching information), including working with a partner school.

Further details are available from TES Online, the school website, or alternatively contact Mrs Kenyon, (Principal's PA), at the school. If you would like a conversation about either the academy or the position, please contact Mr M Little on 07930 451881.

**Closing date for applications is Monday 26th April 2021, 12 noon. Interviews will commence the following week**

Aldridge Education is committed to safeguarding and promoting the welfare of children and young people. References will be taken up for all shortlisted applicants, and successful candidates will be subject to satisfactory enhanced DBS disclosure from the Disclosure and Barring Service.

