



OLDHAM SIXTH
OSFC
FORM COLLEGE

JOIN US

Candidate Information



www.osfc.ac.uk





Welcome

Welcome to Oldham Sixth Form College, part of the Pinnacle Learning Trust.

Oldham Sixth Form College is a large and diverse sixth form college specialising in A Level courses, of which we offer the widest choice in the area. We have an excellent reputation for academic and vocational achievement, with a 99% pass rate in A Level subjects and 100% pass rate in vocational subjects. Our students receive comprehensive pastoral care and access to an extensive enrichment programme. OSFC's outcomes continue to be strong and, in 2019, we have sent a record number of students onto Higher Education.

OSFC was graded 'Good' by Ofsted in 2017, receiving a glowing report and is currently self-assessing as 'Outstanding'. The outstanding achievement and progression rates of all our students led to OSFC receiving the Social Mobility Award at the 2017 Educate North Awards. We are proud of the year on year successes and achievements of our students and staff.

Our campus is based across 4 buildings in the heart of Oldham town centre. Oldham is in a unique location only five miles away from Manchester City Centre and, with almost a quarter of the borough in the Peak District National Park, this means no household is more than two miles from open countryside. Join us and you will become part of a high quality, forward thinking educational establishment committed to meeting the needs of the community it serves.

Our Trust

Founded in 2017, the Pinnacle Learning Trust is a thriving multi-academy trust operating across all phases of education to the age of eighteen. Our mission is to improve the lives and life chances of young people in Oldham and the local area, by a commitment to raising aspirations and achievements across all our academies, through the development of outstanding practice based upon partnership. Our purpose is to provide excellent academies for our children and young people which establish a culture of high aspirations, and provide and nurture an ethos whereby students learn by example and grow morally and socially.

The Trust currently comprises 3 academies:

- Werneth Primary School
- The Hathershaw College (11-16)
- Oldham Sixth Form College (16-19)

We benefit from being able to support the whole educational journey a young person makes by providing opportunities for staff and students across the phases, helping to make transition points easier, both for those within and beyond the Trust.

Our Trust also benefits from having a Teaching School, the Advantage Teaching School Alliance, led by Oldham Sixth Form College, at its heart. Oldham Sixth Form College was awarded Teaching School status in 2017 in recognition of its impressive track record in developing teachers and sharing best practice. The Advantage Teaching School Alliance provides staff with a range of professional development opportunities beyond their main role in college, including designation as Specialist Leaders of Education, delivery of school to school support, CPD and support for trainee teachers. We have also been designated as an Associate Research School, reflecting and reinforcing our close working relationship with Oldham Research Schools and commitment to evidence-informed practice.



Facilities, Rewards & Benefits

We have invested heavily in resources to offer the best learning and working environment.

We know how hard you work to deliver exceptional results, so we make sure we recognise your achievements.



Nationally agreed pay scales and terms and conditions for sixth form college staff



Generous holiday entitlement for support staff



Well-equipped staff workrooms, offices and classrooms



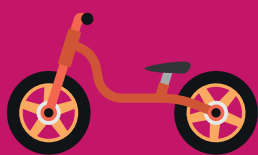
Long service rewards at 15 and 25 years



Free tea and coffee



Free on-site parking



Secure bicycle parking



On-site restaurant and Costa Coffee



Free use of our on-site gym and climbing wall



Free access to Headspace for guided meditation and mindfulness



Comfortable staffroom with a kitchen



Pension schemes

Training & development

We care about our staff and their professional development and wellbeing. As a member of the college community, you will be able to take advantage of the many opportunities for personal and professional development, including:

- OLEVI Improving Teacher and Outstanding Teacher Programmes
- Action Research Projects
- NPQ Programmes
- In-house Leadership Programmes
- Role specific training
- Comprehensive Early Career Teacher programme to support and develop newly qualified teachers
- Mentor programme for new members of staff to help you settle into your new role at OSFC

The college also has a range of measures to support staff wellbeing, such as:



Staff engagement group



Staff wellbeing day



Journal club



Free flu vaccinations



Free telephone counselling service



On-site access to HR

As an ex-student I was excited to join the College as an NQT 12 years ago. I have since had multiple opportunities to develop through a range of roles such as Advanced Skills Tutor, DofE Award Manager, Course Leader, and I am now the Curriculum Area Leader for Sport, Performing and Visual Arts. The best aspect of working at OSFC is our students, they ensure that every day is different and a fresh challenge. We have high expectations which they live up to consistently, and their enthusiasm towards achieving their goals allows us to develop rapport and encourage them to excel.



I joined the college in 2017 as Support Services Manager and I knew, from the moment I first visited the college for my interview, that I wanted to be part of the OSFC community; the friendly and professional culture was very evident. There is a real sense of family, with great relationships between teaching and support staff. There are ample opportunities for support staff to learn, develop and grow. I have mentored students, joined the Eco and Resilience groups, and become involved in the work of the Teaching School.





Giving something back

The Pinnacle Learning Trust strives to make a positive difference to the local community and the lives of all the young people we work with.

Charity events

You will also have the opportunity to get involved with the regular charity events held at the college. We have recently held events to support:

- Dr Kershaw's Hospice
- Sands
- Comic Relief
- Oldham Foodbank
- Maggie's Oldham
- A Bed Every Night
- Breast Cancer Now

College groups

As a teacher or a member of our support staff, you will also be able to join and help lead some of our fantastic student groups, such as:

- Equality and Diversity
- LGBT
- Interfaith group

What we look for

We are looking for teachers and support staff who fundamentally support our vision, mission and values. Before you apply, you might find it helpful to think about your own motivations, strengths and values and compare them with what we strive for at OSFC.

Our mission

Oldham Sixth Form College aims to give our students an outstanding education so they can lead purposeful and successful lives.

Our vision

Our vision as a college to be the first-choice post-16 provider for the young people of Oldham and the surrounding area. We want to transform their lives by working together to develop in them the knowledge, skills and behaviours to thrive in education and employment, and to make valuable and lasting contributions to the local community and beyond. We believe we can achieve this by being outstanding in everything we do and, more specifically, by:

- Placing teaching and learning at the heart of our work
- Recruiting, retaining and developing the best possible staff
- Investing purposefully to create an innovative learning environment
- Offering a curriculum of unparalleled breadth and relevance
- Delivering the widest possible choice of extracurricular opportunities
- Caring for the welfare and wellbeing of all students and staff
- Celebrating diversity and inclusivity within the college community
- Developing the social and cultural capital to enrich all learners
- Providing first-rate advice and guidance so students can make informed choices about their futures
- Fostering a lifelong enthusiasm for learning in our students

We want students to leave Oldham Sixth Form College fully prepared for the next stage of their lives. We want them to be confident, independent and resilient. We want to inspire them to become extraordinary.

Our values

At OSFC, we want our students...

- To have as broad a range of **opportunities** as possible to develop their knowledge and skills
- To be **successful** in all areas of their lives in college and fulfil their aspirations for the future
- To develop a passion for education and have **fun** in their learning
- To play a full part in our **community** and celebrate our diversity and inclusivity

How to apply

We hope this brochure has given you an insight into what we offer teaching and support staff, and what it will be like to work at our college. If you're ready to make your application, head to www.osfc.ac.uk/vacancies-jobs, or take a further look around our website to find out more about the college, explore our news stories and discover more about our culture.

What happens next?



1

Make your application online, ensuring you submit it by the closing date



2

We will process your application confidentially and objectively



3

If successful, you will hear from us within 3 weeks inviting you to an interview



4

We will take account of any specific needs you let us know about, e.g. assistance with access, sign language interpreters



5

On the day of your interview you will receive a schedule for the interview and any tasks to be undertaken.



6

The interview panel will assess you fairly against known appointment criteria, without discrimination



7

You will be informed of our selection decision within 3 working days of your interview



8

If you are successfully appointed, we will give you a clear explanation of the T & Cs and you will have up to 24 hours to accept, if requested



9

The HR department will confirm any offer of employment in writing to you within 7 working days of verbal acceptance.

To find out more or to apply:

www.osfc.ac.uk

hr@osfc.ac.uk

0161 287 8000



@osfc_info



OldhamSFC



OldhamSixthFormCollege