



Teacher of Maths  
September 2024





Kelvin Hall School, Bricknell Avenue, Hull, East Yorkshire HU5 4QH  
Telephone: (01482) 342229 Fax: (01482) 346817  
Email: [info@kelvinhall.net](mailto:info@kelvinhall.net) Twitter: @kelvinhall\_hull [www.kelvinhall.net](http://www.kelvinhall.net)  
Executive Headteacher (Thrive Trust): Mr P Cavanagh  
Head of School: Mr C Leng  
Deputy Headteachers: Mrs C Grandidge, Mrs L Piercy and Mr J Shaw

## Welcome letter from the Executive Headteacher and Head of School

Dear Applicant,

Thank you for enquiring about the position of Teacher of Maths at Kelvin Hall School. The successful candidate will be joining the school at a very exciting time in our development. We are looking for someone who can take us forward and build upon our sound foundations as we continue to move forward with our period of growth over the next 12 months.

Kelvin Hall is a mixed 11-16 school on the outskirts of the city of Hull. We are a much larger than average secondary school. We have approximately 1640 pupils on roll with a year 7 intake of 330 pupils. We stand on the same campus as Wyke Sixth Form College where many of our Year 11 students progress.

Our success and reputation is built on our cooperative values and highly inclusive approach to children and their education. We have a strong ethos of working in partnership with all stakeholders, ensuring we are very ambitious for all our children. We are committed to ensuring that we provide children with the right academic teaching and supportive pastoral care to ensure that all children have the greatest opportunity to succeed.

The successful candidate must share our collaborative approach and ethos, promoting a strong team and partnership ethos and must believe in a self-improving and sustainable system of school improvement that shares our moral purpose.

If you firmly believe that you share our commitment and desire to provide the best life opportunities for our children and you have the leadership strength and experience to lead in this area, then we would very much welcome an application from you.

If you would like to have an initial discussion regarding this role, then please email the school for the attention of the **Head of School, Mr Chris Leng**; [info@kelvinhall.net](mailto:info@kelvinhall.net) or contact the school on 01482 342229.

Yours faithfully

Pat Cavanagh  
Executive Headteacher and  
Trust Secondary Development Lead

Chris Leng  
Head of School





## Welcome to Kelvin Hall School

We are a very successful 11-16 mixed comprehensive school with approximately 1640 students on roll. We are a popular first choice of school for families in Hull and the East Riding of Yorkshire and are a very successful school academically.

We are one of three secondary schools in a developing Multi-Academy Trust (Thrive Co-operative Learning Trust) that currently consists of 10 schools.

We are proud to be working in partnership with Newland School for Girls and the Boulevard Academy in the secondary Trust.



# Senior Leadership Team



**Executive  
Headteacher and  
School Development  
Lead (Secondary)**

**Mr Cavanagh**

## Head of School



**Mr Leng**  
Head of School

## Deputy Headteachers



**Mrs Grandidge**  
Deputy Headteacher & DSL

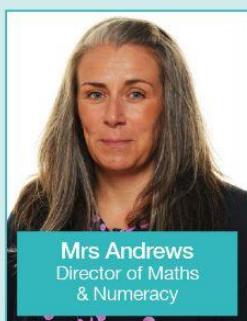


**Mrs Piercy**  
Deputy Headteacher



**Mr Shaw**  
Deputy Headteacher

## Assistant Headteachers



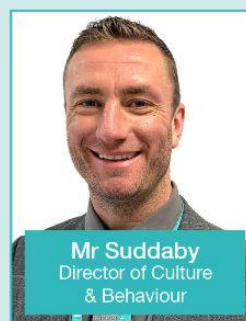
**Mrs Andrews**  
Director of Maths  
& Numeracy



**Ms Dawes**  
Director of Performing,  
Creating & Computing



**Mrs Graham**  
Director of  
Inclusion and SEN



**Mr Suddaby**  
Director of Culture  
& Behaviour



**Mrs Keddy**  
Senior Director of  
Teaching & Learning



**Miss Mills**  
Director of English  
& Literacy



**Mrs Russell**  
Director of Humanities  
& MFL



**Miss Sansam**  
Director of Science  
& Technology



**Welcome from  
Thrive Co-operative  
Learning Trust Chief  
Executive Officer  
(CEO), Jonathan  
Roe**

On behalf of Thrive Co-operative Learning Trust, I would like to thank you for your interest in working with us.

Our mission is to *inspire pupils to thrive in life*. We work cooperatively as a multi-academy trust to enable each pupil, school, and community to reach their fullest potential, and to aspire living our co-operative values.

We hope that you would like to join us in this mission.




## Our Values



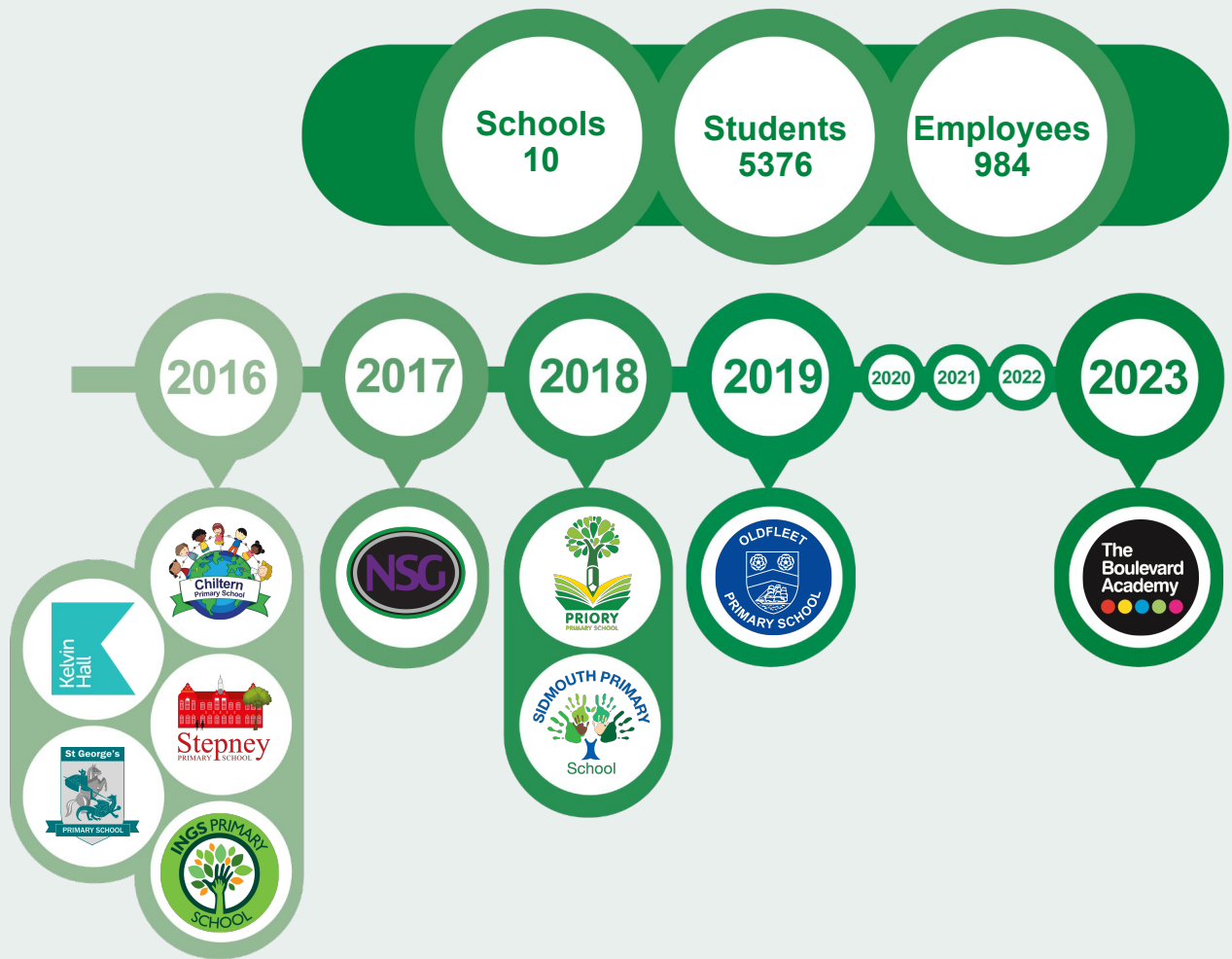
### Thrive Mission Statement *Inspiring pupils to thrive in life*

Thrive Co-operative Learning Trust **understands thriving to mean learning**, and learning to mean **growing in knowledge, self-reliance and in responsibility towards others**. Achieving this will allow pupils and staff to **develop a sense of agency and co-agency**, which is the awareness that we are powerful and can affect change, that life is something to be grasped rather than something that happens, and that we have maximum impact when **we work together for the common good**. This sense of agency plays out at three scales as it affects the future of **the individual, their community (local and national), and their planet**.

View our Thrive Charter here... 



# Our Journey so far...



## Our Partners

Our ongoing partnerships with the following organisations



Our partnership with the Reach Foundation is leading us to develop a 'Cradle to Career' model across our three schools in HU3 - and later across the whole of Thrive.



Our recent partnership with C3 Group has brought us closer to achieving our goal of net-zero emissions, reinforcing our pledge to create a more sustainable future for our students, staff, and the wider community.



Yorkshire 100 aims to identify 100 future school leaders and take them on a development journey of peer-led support and cutting edge national and international school development.



Coop Schools provides services and support for the network of cooperative schools, strengthening school improvement and local accountability.



Registered Office Address:

Kelvin Hall School, Bricknell Avenue, Hull, East Yorkshire HU5 4QH

Tel: (01482) 342229 | Email: [jobs@thrivetrust.uk](mailto:jobs@thrivetrust.uk)



**Teacher of Maths**  
**Salary: ECT/MPR/UPR**  
**Full Time**  
**Contract type: Permanent**  
**Start Date: September 2024**

Kelvin Hall School is part of Thrive Co-operative Learning Trust which was formed in September 2016 and is now responsible for 10 schools across Hull, 3 secondary and 7 primary schools.

We are looking to appoint an outstanding teacher to join the Maths Faculty at Kelvin Hall School starting in September 2024. This is an exciting opportunity to work in a friendly and supportive school in continuing to drive outstanding outcomes for all of our students. We are looking for a suitably qualified Maths teacher to teach across the Key Stages including GCSE.

Kelvin Hall School a very successful and expanding 11-16 mixed comprehensive school with approximately 1640 students on roll. We are a popular first choice of school for families in Hull and the East Riding of Yorkshire and are a very successful school academically. We are committed to ensure that all schools in the Thrive Co-operative Learning Trust have access to high quality support services to underpin the excellent work our schools do in educating our pupils.

We will offer you:

- An inclusive, successful school and outstanding Multi-Academy Trust to work in.
- Friendly, motivated and enthusiastic students.
- A 21st Century building with 'state of the art' facilities.
- A Development Programme aimed at both new and experienced teachers.

We recognise the importance of a visit when considering an application. Should you wish to have an informal and completely confidential discussion or to arrange a visit, please contact Mrs Helen Harrison (PA to the Executive Team) via email at [info@kelvinhall.net](mailto:info@kelvinhall.net) or telephone Kelvin Hall School on 01482 342229 to arrange this.

**Closing date: Wednesday 22nd May 2024 at 9.00am**

**Interviews: TBC**

As part of Thrive Co-operative Learning Trust commitment to safer recruitment processes and in accordance with statutory guidance: [Keeping Children Safe in Education](#) an online search will be carried out on all shortlisted candidates.

**Please note, we do not accept CVs, applications must be submitted using our application form.**

**Our commitment to Safeguarding:** Thrive Co-operative Learning Trust is committed to safeguarding and promoting the welfare of children and young people and expects all staff and volunteers to share this commitment. Each school has a robust Safeguarding Policy and all staff receive training relevant to their role at induction and throughout their employment.

A candidate's suitability to work with children will be explored at all stages of the recruitment process. The successful applicant will, in accordance with statutory guidance, be subject to a comprehensive pre-employment checking process including receipt of a satisfactory enhanced disclosure from the Disclosure and Barring Service (DBS), a Children's Barred List check, a Section 128 Management Check if relevant, Prohibition check and overseas checks as applicable, identity check, medical clearance, proof of qualifications, satisfactory references and a check regarding their eligibility to work in the UK.

This role involves contact with children and provides regular access to children, therefore it is 'regulated activity'. As such, this post is exempt from the Rehabilitation of Offenders Act - 1974 and the amendments to the Exceptions Order 1975, 2013 and 2020.

**Our commitment to equality and diversity:** Thrive Co-operative Learning Trust recognises and celebrates the diversity of its schools and their communities. There is a shared commitment across the Trust to develop further a culture of respect, where discrimination is not tolerated, and individuals are treated equitably and fairly and feel a sense of belonging.

Please visit [Thrive Trust website](#) to view our Job Applicants Privacy Notice, which explains how we collect, store, and use personal data about individuals applying for jobs at our school.

# Job Description

<b>Post Title</b>	Teacher of Maths
<b>Grade</b>	ECT/MPR/UPR
<b>Location</b>	Kelvin Hall School
<b>Reporting to</b>	Progress Leader Maths

## Purpose of Role

To facilitate and encourage learning which enables students to achieve high standards; to share and support the corporate responsibility for the well-being, education and behaviour management of all students.

The Job Description should be read alongside the range of Professional Duties of Teachers as set out in Part XII of the Teachers' Pay and Conditions Document, sections 48 to 50. The post-holder will be expected to undertake duties in line with the Professional Standards for Qualified Teachers and uphold the Professional Code of the General Teaching Council for England.

## Teaching and Managing Student Learning

- To promote and safeguard the welfare of children and young people.
- Ensure effective teaching of whole classes, groups and individuals so that teaching objectives are met, momentum and challenge are maintained, and best use is made of teaching time.
- Use teaching methods which keep students engaged, including stimulating students' intellectual curiosity, effective questioning and response, clear presentation and good use of resources.
- Set high expectations for students' behaviour, establishing and maintaining a good standard of classroom management through well-focused teaching and through positive and productive relationships

## Planning and Setting Expectations/Student Achievement

- Identify clear teaching objectives, content, lesson structures and sequences appropriate to the subject matter and the students being taught.
- Set appropriate and demanding expectations for students' learning and motivation. Set clear targets for students' learning, building on prior attainment.
- Identify students who have special educational needs, and know where to get help in order to give positive and targeted support. Implement and keep records on Individual Education Plans (IEPs).

## Assessment and Evaluation

- Assess how well learning objectives have been achieved and use this assessment for future teaching.
- Mark and monitor students' class and homework providing constructive oral and written feedback, setting targets for students' progress.



## Relationship with Parents and the Wider Community

- Prepare and present informative reports to parents, both oral and written
- Provide opportunities to develop students' understanding by relating their learning to real and work-related examples, recognising that learning takes place outside the school context.
- Liaise with agencies responsible for students' welfare
- Manage own Performance & Development
- Take responsibility for their own professional development and keep up to date with research and developments in pedagogy and in the subjects they teach.
- Share corporate responsibility in the implementation of school policies and procedures.
- Set a good example to the pupils they teach in their presentation and their personal conduct.
- Evaluate their own teaching critically and use this to improve their own effectiveness

## Managing and Developing Staff and Other Adults

- Establish effective working relationships with all professional colleagues.

## Managing Resources

- Select and make good use of textbooks, ICT and other learning resources which enable teaching objectives to be met.
- Create a stimulating learning environment within their teaching area.

## Strategic Leadership

Demonstrate they are an effective professional who challenges and supports all students to achieve their best through:

- Inspiring trust and confidence
- Creating mutual respect
- Engaging and motivating students
- Using positive actions to improve student outcomes
- Developing an analytical thinking
- Creating and maintaining a team commitment with colleagues

## Safeguarding Children

Thrive Co-operative Learning trust is committed to safeguarding and promoting the welfare of our pupils and young people. Each school has a robust Safeguarding Policy and all staff will receive training relevant to their role at induction and throughout employment at the school. We expect all staff to share this commitment. All post holders are subject to a satisfactory Enhanced disclosure from the Disclosure & Barring Service (DBS) and satisfactory employment references, as well as identification and qualification checks which will be required before commencing duties.

<b>Responsibilities for Staff:</b>	None
<b>Responsibilities for Customers/Clients:</b>	Safeguarding and promoting the welfare of children. Student's Achievement
<b>Responsibility for Budgets/Financial Resources:</b>	None
<b>Responsibility for Physical Resources:</b>	None

		E	D	How Identified
<b>Qualifications</b>	Qualified teacher status or equivalent	✓		AF, R
	Good honours degree		✓	
<b>Relevant Experience</b>	Working with young people in a statutory or non-statutory setting	✓		AF, R
	Teaching experience		✓	
<b>Skills &amp; Abilities</b>	Motivation to work with children and young people	✓		AF, I, R
	Ability to form and maintain appropriate relationships and personal boundaries with children and young people	✓		
	Effective classroom practitioner	✓		
	Competent with ICT	✓		
	Able to reflect on own practice	✓		
	Excellent communication skills	✓		
	Good organisational skills and able to meet deadlines	✓		
	Very good numeracy/literacy skills	✓		
	Knowledge of recent developments within education	✓		
Able to apply theory to professional practice	✓			
<b>Knowledge</b>	A knowledge and commitment to safeguarding and promoting the welfare of children and young people	✓		AF, I, R
	Thorough understanding of the National Curriculum to KS3 and KS4 in order to support effective teaching and learning.	✓		
	Secure subject specific knowledge	✓		
	Commitment to raising standards	✓		
	Understanding and knowledge of developments in learning and teaching	✓		

		E	D	How Identified
<b>Interpersonal/ Communication Skills: Verbal Skills</b>	Ability to establish professional, effective working relationships with a range of partners/colleagues and children & young people	✓		AF, I
	Very good communication and interpersonal skills	✓		
	Understanding of the range of needs of young people within age group.	✓		
	To have a flexible approach to work	✓		
	To be committed to the objective of raising achievement in the school	✓		
	To help raising standards of learning for pupils	✓		
<b>Personal Qualities</b>	Sense of humour and be able to work with staff from all backgrounds	✓		AF, I
	Ability to work under pressure and meet deadlines	✓		
	Energy, ambition and enthusiasm	✓		
	Projects a professional image	✓		
<b>Disclosure &amp; Barring Service</b>	The successful candidate's appointment will be subject to the School obtaining a satisfactory Enhanced disclosure from the Disclosure & Barring Service and Children's Barred list check	✓		DBS
	This post is exempt from the Rehabilitation of Offender Act 1974 the candidate is required to declare full details of everything on their criminal record.	✓		(after short listing)

# How to apply



Application forms can be downloaded from TES or Eteach and should be returned via email to [people@thrivetrust.uk](mailto:people@thrivetrust.uk)

We recognise the importance of a visit when considering an application. Should you wish to have an informal and completely confidential discussion or to arrange a visit, please contact Mrs Helen Harrison (PA to the Executive Team) via email at [info@kelvinhall.net](mailto:info@kelvinhall.net) or telephone Kelvin Hall School on 01482 342229 to arrange this.

**Closing Date: Wednesday 22nd May 2024 at 9.00am**

**Interview Date: TBC**