

A CHURCH OF ENGLAND MULTI-ACADEMY TRUST
DEDICATED TO TRANSFORMING CHILDREN'S LIVES



Swineshead St Mary's Church of England Primary School
Midday Supervisor Assistant
Maternity Cover



Midday Supervisor Assistant

Maternity Cover

SALARY

Grade 2, Points 3 – 6 £23,656 - £24,027 FTE
£2,746.58 to £2,789.65 (Pro Rata)



HOURS

5 Hours per week
39 weeks per year (Term time plus inset days)

START DATE

As soon as possible – 31st December 2025

LOCATION

Swineshead St Mary's Church of England Primary School

APPLICATION DEADLINE

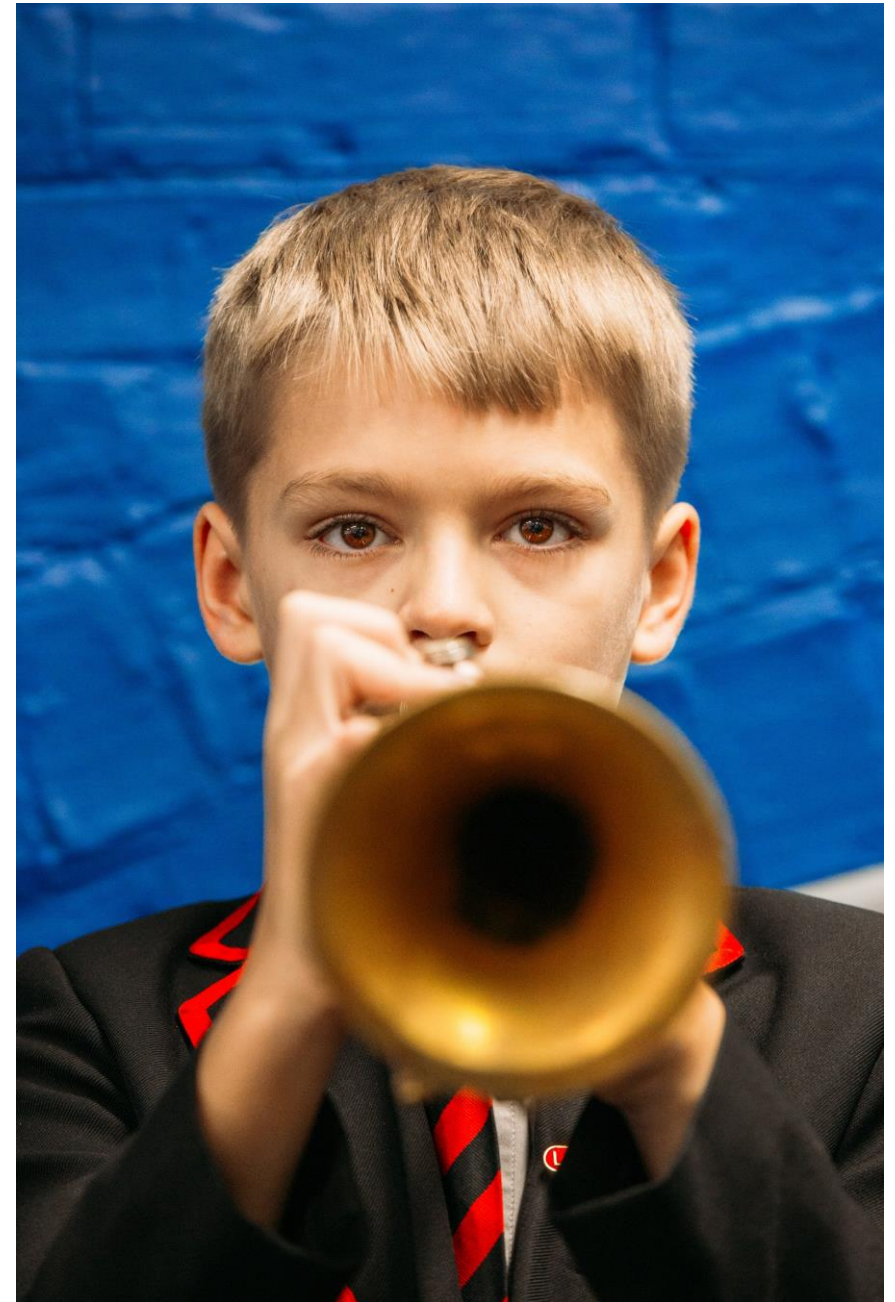
Monday 20th January 2025 (Noon)

INTERVIEWS

Wednesday 29th January 2025 (details to be confirmed)

For an informal discussion about the role, or to arrange a visit, please contact enquiries@swineshead.laat.co.uk or call 01205 820356

Please go to [My Trust Careers](#) to apply



Welcome from the CEO of The Trust – LAAT

Be a part of something bigger...

Dear Candidate

What if every child was unique with **intrinsic value**? What if every member of staff was unique with intrinsic value? What if every school was **unique** with intrinsic value? At LAAT we believe that they are.

We're a **Church of England** trust so we call it being made in the image of God. But you don't have to. You just need to be able to look at our children and young people – however deprived or privileged, however difficult or compliant, whatever their background, or ability, or culture, or gender – and know that what you do, how you teach them, what you give to them, how you relate to them can **transform** their lives. And then you must have the energy, and passion, and drive, to give them your best.

We don't ask you to do this alone. We'll provide you with the **support** of a MAT who believes that you too are unique and **valuable** – valuable for who you really are.

So, is now the time to think hard about what you want and to look at what Greater Lincolnshire and Lincoln Anglican Academy Trust can offer you? A chance to grow your career, **professional support** and the opportunity to transform lives.

Within fabulous **Greater Lincolnshire** with its beautiful beaches, woods, Wolds, fields and fens its 2-university city and its access to new and growing technologies. Its **reasonable priced houses** and home to the Red Arrows.





Is now the time to find out more about us and to join our **community of Excellence, Exploration and Encouragement?** To change lives with us, for the better .

Jackie Waters-Dewhurst
Chief Executive Officer

The Trust is committed to safeguarding and promoting the welfare of children and young people and expects all staff and volunteers to share this commitment. We will require the successful applicant to undertake an enhanced criminal record check via the DBS.



What our Colleagues say about us...



'I have never been happier in a job than I am in this one. I feel extremely well supported by the Trust and colleagues in school and know that this school has been able to make rapid improvements in part due to the support we have had from Trust colleagues'

"SLT are caring and understand us as humans that have issues out of school. We are treated fairly and as part of a family' 'The Christian values of our school are lived out by stakeholders' 'As much is done as possible to support mental health and work / life balance"

'Just think we are flippin' awesome! We have passionate and dedicated teams and enable staff and children to flourish. I love my role and I am proud to be a part of this Trust. I wouldn't want to work anywhere else'

'Good working relationships, easy to talk to senior staff at school and trust level, supportive culture, wealth of knowledge and experience within the trust' 'Our links to our community, the children and parents. The support from the trust with curriculum'

'I like being part of a Christian school. I like how daily worship is valued. I appreciate the staff team in the school I work in. I appreciate the health care package and online health support'

'The sense of shared purpose to make changes for children to improve their life chances'

You are the God who sees me (Genesis 16:13)

We see you and believe that you deserve the very best

- We firmly believe that, to ensure the best outcomes for our pupils, we must ensure the best support and career development for our colleagues.
- We provide opportunities from initial teaching training to supporting Headteachers who wish to take on Executive Headship, Specialist Advisor roles or supporting wider Trust work.
- We also offer apprenticeships within the Trust that support career pathways for Teaching Assistants, provide opportunities for Wellbeing Champions and enhance digital skills.
- All colleagues benefit from bespoke learning journeys to ensure that we are not only compliant with our statutory responsibilities, but so that our colleagues can be confident in fulfilling all aspects of their role to the highest standard.
- Our focus on Growth and Development rather than 'performance management', ensures that all colleagues are empowered to do their job to the highest standard and cements our commitment to the continuous support and development of our colleagues, enhancing their skills and knowledge.
- All colleagues have access to;
 - Over 70 online courses to support development
 - 24 hour confidential helpline covering legal, financial and health and wellbeing guidance
 - Free of charge counselling sessions
 - Personalised wellbeing coaching
 - Virtual GP - Accessible by smart phone, or computer with same day appointments



About Swineshead St Mary's Church of England Primary School



Swineshead St Mary's Church of England Primary School's vision is based on Christian principles, values and aims: *Two travellers are transformed and enriched by sharing their journey with a guide. We view our work to be similar in making a difference to future lives. We travel together on our journey of transformation and commit our school to always being supportive, nurturing and challenging.*

As in the gospel story of two travellers who meet and are transformed and enriched by sharing part of their journey with a guide, we view our work with children to be a similar brief opportunity to make a lifelong difference to their future lives.

For part of the children's life journey, we have the privilege to walk with them. During these fleeting years, we commit to ensuring that every child is enriched, challenged, supported, and developed so that they can be the best that they can be.

We use the strapline, "Small Village, Big Horizons" to articulate our vision for the schools. We want our curriculum to expand the experiences and ambitions of our pupils. We want our pupils to learn about local knowledge alongside national and global information.

We seek to not only provide an environment which promotes achievement in learning but also one of warmth, security and care, valuing each member of the school community and working to encourage the realisation of everyone's potential.

We celebrate all achievement whether big or small and challenge our children (and ourselves) to improve even more. We encourage a 'can do' culture, a thirst for life-long learning and a pride in each other's skills and attributes.



Job Description

The successful candidate will work as part of a team monitoring pupil behaviour during the midday break and ensuring a safe and healthy environment.

Key Tasks and Responsibilities

Supervise activities and maintain the health, safety, welfare, good conduct and safeguarding of pupils, during the midday break, having regard to special or additional needs.

Report incidents in line with the school policy.

Assist in the supervision of other activities during the break, to include setting out tables and storing lunchtime equipment.

Encourage pupils to select and eat healthy and balanced meals.

Clean up spillages of food or liquid during meal service.

Wipe down tables and clean dining areas between meals.

Support and encourage positive play and interactions, in line with the School Behaviour Policy.

Ensure that any incidents are reported to the right person and escalated as required.

Other

The duties and responsibilities in this job description are not exhaustive. The postholder may be required to undertake other duties that may be required from time to time within the general scope of the post. Any such duties should not substantially change the general character of the post. Duties and responsibilities outside of the general scope of this grade of post will be with the consent of the postholder.

The postholder is required to carry out the duties in accordance with LAAT Equal Opportunities policies.

The postholder is required to carry out the duties in accordance with the LAAT Health and Safety policies and procedures.

All employees need to be aware of the possible abuse of children and vulnerable adults and if you are concerned you need to follow the Academies' Safeguarding Policy. In addition, employees working with children have a responsibility to safeguard and promote the welfare of during their work.

Person Specification

Selection decisions will be based on the criteria outlined below. At each stage of the process an assessment will be made by the appointment panel to determine the extent to which the criteria have been met. When completing your application paperwork, you should ensure that you address each of the selection criteria and provide supporting evidence of how you meet the criteria through reference to your work or relevant experience.

Training/Qualifications/Experience

Essential

Desirable

	Essential	Desirable
Experience of supervising or working with children		*
Current First Aid qualification		*
Experience of working in a team		*
Experience of or training in manual handling techniques		*

Professional knowledge and understanding

Empathy with the mission and vision of the Church of England and the Diocese of Lincoln	*	
Ability to communicate clearly	*	
Inspire Trust and confidence in children	*	
Able to follow instructions and seek clarification where needed	*	
Willingness to undertake further training and development to meet the needs of the role	*	

Safeguarding Children

Current Safeguarding Training		*
Enhanced DBS Clearance	*	
Awareness of the importance of safeguarding and promoting the welfare of children	*	
A commitment to maintaining up to date knowledge of child protection legislation and guidance	*	

Approach to work - Candidates should

Have flexibility to changing demands as needed	*	
Prioritise as required to meet the demands of the role	*	
Have attention to detail	*	

Behaviour Competencies - Candidates should

Be respectful and able to act with tact and diplomacy	*	
Be empathetic and demonstrate an awareness of the differing needs of colleagues and pupils	*	

Other - Candidates should

Be a positive role model	*	
--------------------------	---	--

The LAAT Trust promotes diversity and wants a workforce which reflects Christian Values. Applications are welcome from all, irrespective of gender, sexuality, race, religion, marital status, age, or disability.



Our commitment to you

We believe that all our Schools are fantastic places to work. Our commitment to you is important, throughout the recruitment process and beyond. Our culture is one of development, equality, and consistency. We aim to demonstrate this through the below:

Transparency – we will treat you with respect, honesty, and fairness.

Protecting your privacy – we will ensure your information is secure and handled sensitively and in line with our Privacy Policy for prospective staff.

Showcasing talent – we'll provide a good opportunity for you to share your skills, experience, and potential.

Feedback – we will provide constructive feedback professionally.

Listening – we welcome feedback.

We hope to ensure that you have a positive experience throughout the recruitment process by:

- Providing you with clear, accurate and timely information.
- Giving you the opportunity to ask questions – and providing you with answers.
- Following a fair assessment process

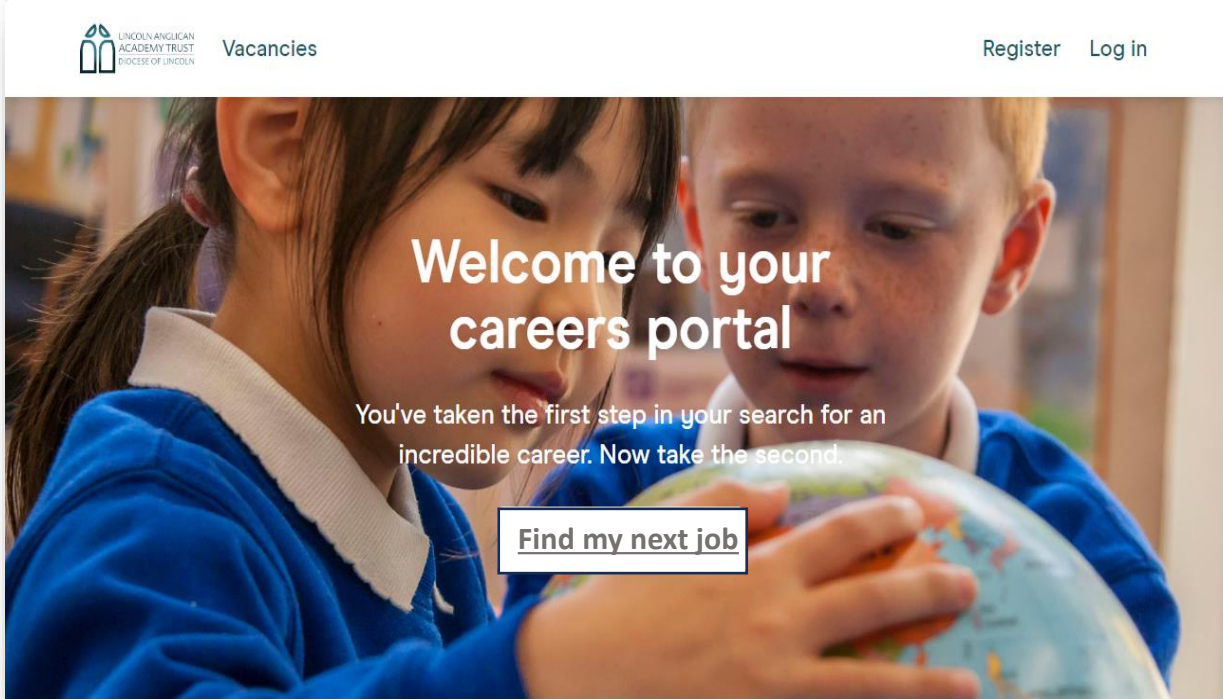
Please see link to our privacy notice for prospective candidates:

[Opportunities - LAAT \(thelaat.co.uk\)](https://thelaat.co.uk)

To apply, register interest or get live updates of all our current vacancies please visit

[My Trust Careers](#) and create an account.

In line with Keeping Children Safe in Education, please be advised that if shortlisted, we will carry out internet searches to support our commitment to safer recruitment. Please note that the purpose of this is to identify any incidents or issues that have happened, and are publicly available online, which the school might want to explore with applicants at interview. Internet searches will be carried out by someone who is not directly involved in the recruitment process and only relevant information will be shared with the interview panel.



LINCOLN ANGLICAN
ACADEMY TRUST
DIOCESE OF LINCOLN

Vacancies

Register Log in

Welcome to your
careers portal

You've taken the first step in your search for an
incredible career. Now take the second.

[Find my next job](#)