

Myatt Garden Primary School

Midday Supervisor
Applicant Information Pack



Head Teacher's Welcome

Dear Applicant

Thank you for taking the time to consider Myatt Garden. We have a long tradition as a creative school, where children are offered a rich curriculum that engages them as active participants in experiential learning.

It is our staff that support, inspire and motivate our children who are at the heart of everything we do. The Myatt Garden team work exceptionally hard with a real sense of team spirit - we are all in it together!

Myatt Garden is a real community school; we work in partnership with families to ensure a warm and inclusive atmosphere where children feel safe and valued. Alongside academic success, we strive to develop our children's emotional intelligence and empathy for others. Our pupils are polite, friendly and demonstrate very positive attitudes to teachers, their learning and each other.

We are passionate about learning and are excited about welcoming a new team member to our school. If Myatt Garden sounds like the right school for you, please come and visit us. We look forward to showing you all that makes Myatt Garden such a special place to work and learn.

Sally Williams



A bit about our school...



Myatt Garden is a vibrant and creative two-form entry primary school in Brockley. There are 361 children on roll, including our nursery. The school serves a very diverse community with our pupil premium children making up about 20% of our roll and 61% of our pupils belonging to global majority groups.

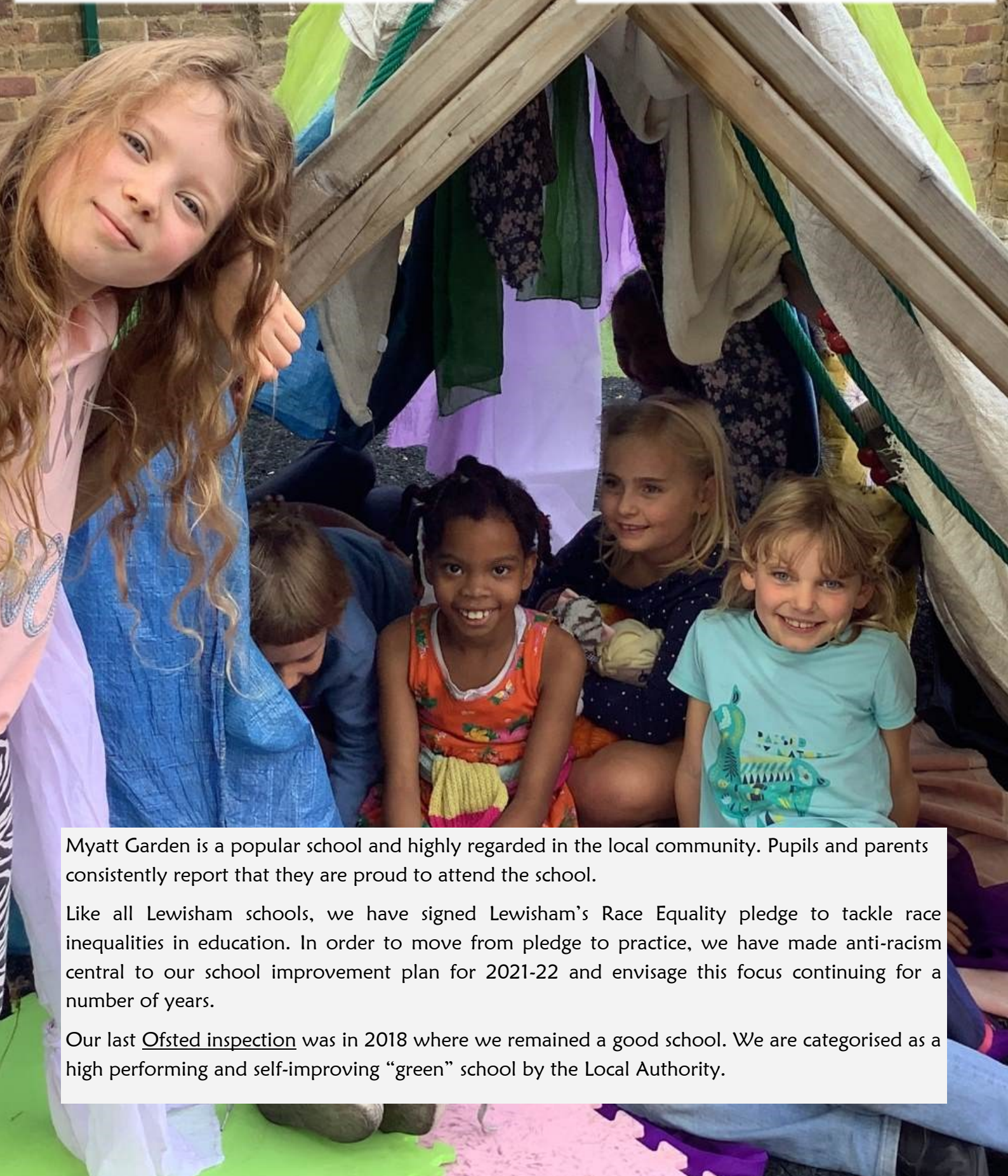
We place a high value on a broad and balanced curriculum which ensures children are passionate about learning and ready for future challenges. We have a strong shared vision where all our children are encouraged to **enjoy and excel at learning and life**. We have created a vibrant and enriching learning community where children, staff and families are valued, included and respected, and where all are encouraged to develop and achieve their potential and make a contribution.

We believe in the ability of every child and our mission is to create an environment where children have:

- ◆ the learning and social skills to succeed and contribute
- ◆ the confidence, enthusiasm and self-belief to achieve, create and participate
- ◆ the curiosity and passion to problem-solve, take risks and be ambitious
- ◆ and a sense of social responsibility that makes them team players, great friends and active citizens

“ I want to send a heartfelt THANK YOU to all those teachers, TAs, PTA members, volunteers and support staff who make our school function in an age of austerity. Myatt Garden Primary literally turned my girls’ lives around.”

“ Myatt Garden has been more than a school, a place where a real community was allowed to grow, where not only the children but their whole family felt a real sense of inclusion and support”



Myatt Garden is a popular school and highly regarded in the local community. Pupils and parents consistently report that they are proud to attend the school.

Like all Lewisham schools, we have signed Lewisham’s Race Equality pledge to tackle race inequalities in education. In order to move from pledge to practice, we have made anti-racism central to our school improvement plan for 2021-22 and envisage this focus continuing for a number of years.

Our last Ofsted inspection was in 2018 where we remained a good school. We are categorised as a high performing and self-improving “green” school by the Local Authority.

Outdoor Play and Learning (OPAL)

One fifth of the school year, the same amount of time allocated to core subjects such as Literacy or Numeracy, is allocated to play in our school. Our playtimes have significant educational, happiness and wellness value.

At Myatt Garden, we have learnt that the need to play and the fundamentals of what makes a good play environment are universal, but the ability of our organisation to provide for the needs of children depends on our values and priorities, combined with our willingness and capacity to grow as individuals and as a team.



We have seen just how much of an impact improving our play provision has already made to our school. We are not just talking about our playtimes being a bit less bother or about our children being a bit happier. We are talking about a cultural recognition (a need that is fundamental to the physical and mental wellbeing of all children) of the importance that freely chosen play has on every single child.

Our vision is that every child in our school has an amazing period of sustained high quality play every day, with no exceptions. If one child is not enjoying playtimes, then things still need improving. That's where our play team comes in – supporting and enabling (but not directing or leading) each child's play experience each day.

Our goal is that, regardless of personal identity, ability or age, every child at Myatt Garden should have access to outstanding play opportunities every school day of their lives. We hope that you will become part of this story and work with us to realise this vision.





Working at Myatt

Our school is full of enthusiastic and talented teachers and support staff who put the children at the heart of everything they do.

At Myatt Garden we value the wellbeing of all of our staff. It is a key focus that informs every decision we make.

Come and join our team at Myatt and benefit from:

- ◆ A stable, supportive and dedicated staff team who are passionate about what they do
 - ◆ Opportunities to join working groups and have your say in policy making and strategy across the school.
 - ◆ Respectful, kind and eager pupils who love learning
 - ◆ An approachable, flexible and compassionate senior leadership team
 - ◆ Excellent CPD opportunities and mentoring
 - ◆ Regularly stocked, and recently renovated staff rooms
 - ◆ Free onsite car park
 - ◆ Whole staff social events



Above all, Myatt Garden is an inclusive school that celebrates and embraces our differences. We invite you to come and be your authentic self at our school and to use your unique experiences to enhance the learning of our pupils.





“ We all feel trusted by senior leaders not just to do our job but to make our mark. Each day I see the difference that I make. I feel empowered, supported, respected and fulfilled. That’s the magic of Myatt!”

“ There's a strong community feel at Myatt and supply teachers always comment on the warm atmosphere. Staff are really friendly and always supportive of each other; it's one of the reasons why so many of us have stayed here for so long!”

Job Summary

Myatt Garden is looking for a midday supervisor to join our lunchtime play team. The role is part-time and requires the candidate to work between 12:15 pm and 1:30 pm every afternoon Monday to Friday.

The successful candidate will be responsible for supervising and providing a stimulating play environment for children. The Midday Supervisor may be asked to devise and deliver play activities appropriate to the age and individual needs of children and which reflect and maintain the Playwork Principles.

The successful candidates must be available to start on **30th September 2024** or as soon as possible. We are offering an annual salary at Scale 2. This equates to an actual salary of **£4,228**.

We know that the best way to get a true feel of our school and what we are like at Myatt Garden is by visiting us. We encourage all considering this role to come and visit our school. Please contact **Eli Tabiri**, the School Business Manager, by telephone on 020 8691 0611 or send an email to recruitment@myattgarden.lewisham.sch.uk to arrange a visit.

We encourage applications from people from all sections of our wider community. The closing date for all applications is at **noon on Monday 20th September 2024**.



Job Description

Job Title	Midday Supervisor
Pay Grade	Scale 2
School	Myatt Garden Primary School
Responsible to	Deputy Head Teacher, Senior Midday Supervisor
Responsible for:	N/A

MAIN PURPOSE OF JOB

Responsible, under the direction of the Senior Midday Meals Supervisor and Deputy Head Teacher or other nominated officer, either individually or as part of a team, for securing the safety, welfare and good conduct of pupils during the lunchtime break period, in accordance with the agreed practices and procedures. To assist with the feeding of children and young people and to assist with their social, health and personal needs.

Tasks

ORGANISATION

- ◆ Undertake direct supervision of pupils in designated areas.
- ◆ Assist with daily decisions on areas for pupil use e.g. wet lunchtimes

RESOURCES

- ◆ Be familiar with safe use of outdoor equipment.

Responsibilities

- ◆ Supervise conduct of pupils, ensuring safe and orderly conduct within and outside the premises.
- ◆ Promote and ensure school rules regarding games allowed are met and that health and safety procedures are maintained.
- ◆ Help pupils in the dining area or play/other areas who may require assistance.
- ◆ Deal with minor incidents and where appropriate, refer serious incidents to Deputy Head Teacher or Senior Staff.
- ◆ Clean up spillages or debris around the dining/play areas to ensure the maintenance of good order, discipline and safety.
- ◆ To assist with children's feeding.
- ◆ To assist with children's social, health and personal needs.

Person Specification

Qualifications & Training	Essential	Desirable
		<ul style="list-style-type: none"> ◆ Level 2 Maths or equivalent ◆ Level 2 English or equivalent
Experience	<ul style="list-style-type: none"> ◆ Working as part of a team ◆ Working with children 	<ul style="list-style-type: none"> ◆ Working within a school setting
Skills	<ul style="list-style-type: none"> ◆ Ability to deal with challenging behaviour ◆ Able to act on own initiative ◆ An ability to develop positive relationships with children ◆ The ability to remain calm in challenging situations and to ask for help when needed ◆ Proven written and oral communication skills 	
Commitment	<ul style="list-style-type: none"> ◆ Display a commitment to the protection and safeguarding of children ◆ A commitment to uphold the school's vision, values and staff code of conduct ◆ A commitment to equal opportunities and assisting the school in raising achievement for all its pupils. ◆ A commitment to becoming familiar with and applying whole school policies, procedures and standards and be willing to implement them in a consistent manner ◆ A commitment to attend in -service and external training courses and to develop and update knowledge and skills as required 	

Selection Process



To apply for this role please complete the accompanying application form and submit this via email to recruitment@myattgarden.lewisham.sch.uk or by post at Myatt Garden Primary School, Rokeby Road, London SE4 1DF.

All applications must be received by **Monday 20th September 2024 at 12pm**

Shortlisting

Applications will be shortlisted by the panel on the afternoon of **Monday 20th September**

Myatt Garden is an inclusive school and as part of our Anti-Racist agenda all applications will undergo blind shortlisting.

All shortlisted candidates will be contacted via email or telephone by **Tuesday 21st September 2024**.

Shortlisted candidates may be subject to an online search.

Interviews

Interviews will be held on **Wednesday 25th September 2024**.

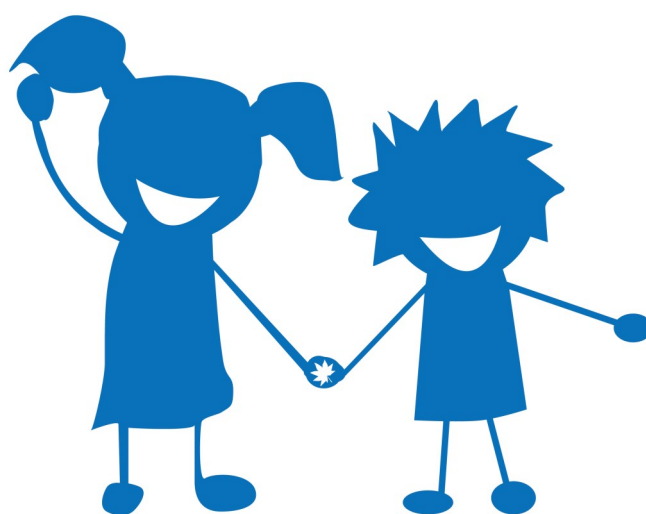
Appointment

The successful candidate would be expected to start on **30th September 2024** or as soon as possible thereafter.

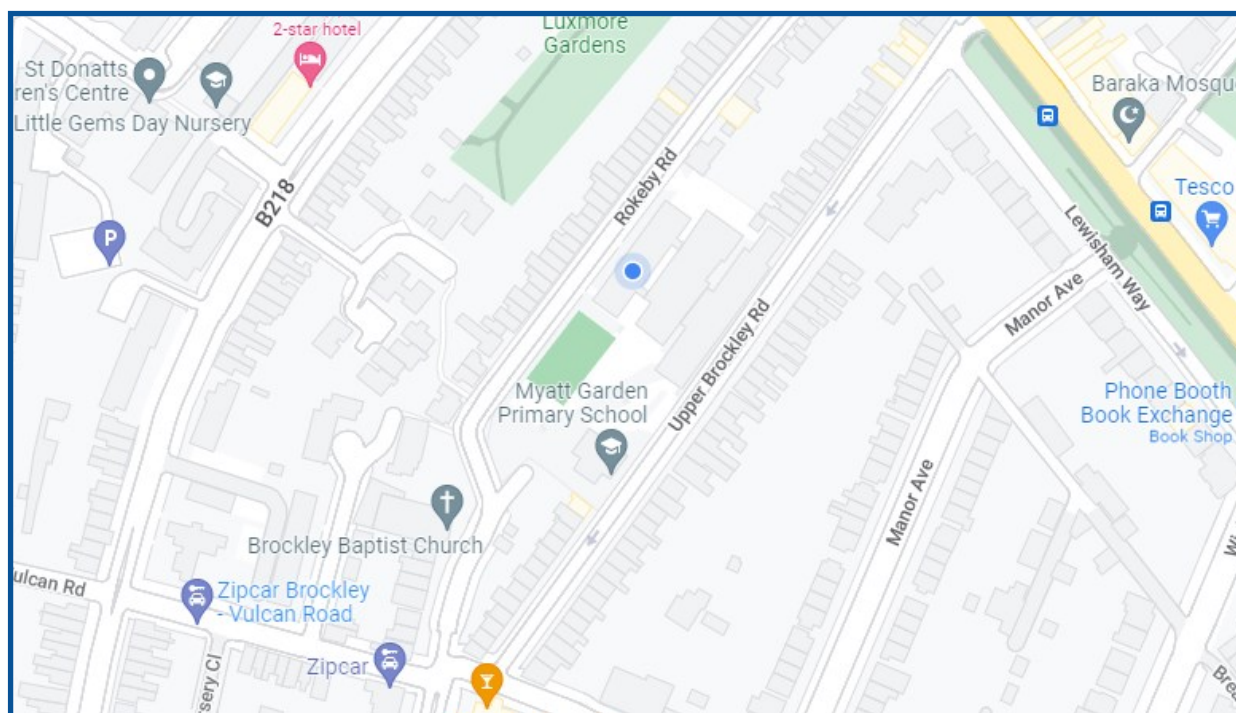
This post is exempt from the Rehabilitation of Offenders Act, any criminal conviction will need to be declared if you are appointed.

Myatt Garden School is committed to safeguarding and promoting the welfare of children and young people and expects all staff to share this commitment. Any successful appointment will be subject to an enhanced DBS check and suitable references.

If you would like more information please contact **Eli Tabiri** on 020 8691 0611 or send an email to recruitment@myattgarden.lewisham.sch.uk.



Myatt Garden Primary School



Telephone

020 8691 0611

Email

recruitment@myattgarden.lewisham.sch.uk

Address

Rokeby Road, London SE4 1DF