

Myatt Garden Primary School

Music Teacher Applicant Information Pack



Head Teacher's Welcome

Dear Applicant

Thank you for taking the time to consider Myatt Garden. I have been proud to be part of the Myatt Garden community for over 20 years and as a Head Teacher since 2014.

Myatt Garden has a long tradition as a creative school, where children are offered a rich curriculum that engages them as active participants in experiential learning.

Our pupils love music lessons, thanks to the quality teaching we believe is best provided by a dedicated music professional, We have a dedicated music room, a good range of instruments and children can sign up for additional peripatetic music lessons.

Staff are our most valuable resource and it is the people in our organisation that make the difference each and every day. It is our staff that support, inspire and motivate our children who are at the heart of everything we do. The Myatt Garden team work exceptionally hard with a real sense of team spirit - we are all in it together!

At our last Ofsted, inspectors recognised the ethos of Myatt Garden as very positive and instilling a sense of 'can do' in pupils and staff. They highlighted the significant part played by our bespoke curriculum and the way it encourages children to think for themselves and develop a real enthusiasm for learning.

Myatt Garden is a real community school; we work in partnership with families to ensure a warm and inclusive atmosphere where children feel safe and valued. Alongside academic success, we strive to develop our children's emotional intelligence and empathy for others. Our pupils are polite, friendly and demonstrate very positive attitudes to teachers, their learning and each other.

We are passionate about learning and are excited about welcoming a new dynamic team member to our school. If Myatt Garden sounds like the right school for you, please come and visit us. We look forward to showing you all that makes Myatt Garden such a special place to work and learn.



Sally Williams

A bit about our school...



Myatt Garden is a vibrant and creative two-form entry primary school in Brockley. There are 388 children on roll, including our nursery. The school serves a very diverse community with our pupil premium children making up about 20% of our roll and 61% of our pupils belonging to global majority groups.

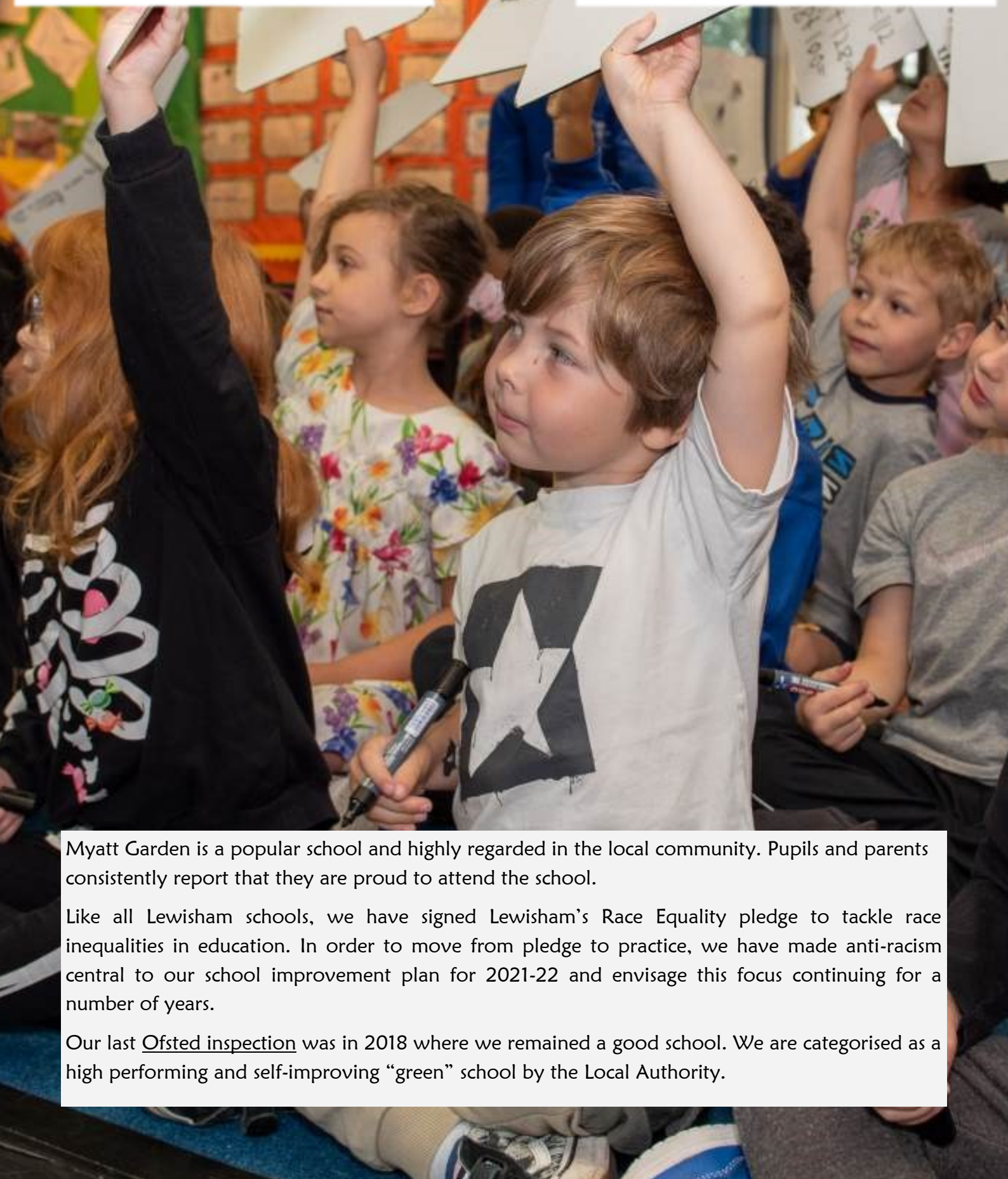
We place a high value on a broad and balanced curriculum which ensures children are passionate about learning and ready for future challenges. We have a strong shared vision where all our children are encouraged to **enjoy and excel at learning and life**. We have created a vibrant and enriching learning community where children, staff and families are valued, included and respected, and where all are encouraged to develop and achieve their potential and make a contribution.

We believe in the ability of every child and our mission is to create an environment where children have:

- ◆ the learning and social skills to succeed and contribute
- ◆ the confidence, enthusiasm and self-belief to achieve, create and participate
- ◆ the curiosity and passion to problem-solve, take risks and be ambitious
- ◆ and a sense of social responsibility that makes them team players, great friends and active citizens

“ I want to send a heartfelt THANK YOU to all those teachers, TAs, PTA members, volunteers and support staff who make our school function in an age of austerity. Myatt Garden Primary literally turned my girls’ lives around.”

“ Myatt Garden has been more than a school, a place where a real community was allowed to grow, where not only the children but their whole family felt a real sense of inclusion and support”



Myatt Garden is a popular school and highly regarded in the local community. Pupils and parents consistently report that they are proud to attend the school.

Like all Lewisham schools, we have signed Lewisham’s Race Equality pledge to tackle race inequalities in education. In order to move from pledge to practice, we have made anti-racism central to our school improvement plan for 2021-22 and envisage this focus continuing for a number of years.

Our last Ofsted inspection was in 2018 where we remained a good school. We are categorised as a high performing and self-improving “green” school by the Local Authority.

Music at Myatt Garden

Myatt Garden is a warm, welcoming primary school in Brockley with a strong history of promoting art in education. The quality of work produced has been widely applauded and our learning environment is visually rich, as a tour of our school demonstrates.

At Myatt Garden we aim to create a positive and inclusive environment where all children are safe, happy and keen to learn. We work collaboratively to nurture our children's creativity, talents, curiosity and enthusiasm for learning through our creative curriculum.



As the music teacher, you will provide fun, inspirational music lessons to pupils across the school. These will be as part of teacher's PPA sessions. Our children have good energy and love to sing and make music. We are looking for a charismatic music teacher who is passionate about the impact of quality music provision and can build on this enthusiasm to make our school sing !

The school has been involved with many music projects including working with the Royal Philharmonic Orchestra, performing at the Blackheath concert halls, Lewisham Theatre and O2, as well as staging an ambitious Year 6 musical at the end of every school year!



Working at Myatt

Our school is full of enthusiastic and talented teachers and support staff who put the children at the heart of everything they do.

At Myatt Garden we value the wellbeing of all of our staff. It is a key focus that informs every decision we make.

Come and join our team at Myatt and benefit from:

- ◆ A stable, supportive and dedicated staff team who are passionate about what they do
 - ◆ Respectful, kind and eager pupils who love learning
 - ◆ An approachable, flexible and compassionate senior leadership team
 - ◆ Opportunities to join working groups and have your say in policy making and strategy across the school.
 - ◆ Excellent CPD opportunities and mentoring
 - ◆ Staff wellbeing committee and mental health champions
 - ◆ Free tea and coffee in our regularly stocked staff room
 - ◆ Free onsite car park
- ◆ Whole staff social events
- ◆ Team spirit and a 'can do' culture



Above all, Myatt Garden is an inclusive school that celebrates and embraces our differences. We invite you to come and be your authentic self at our school and to use your unique experiences to enhance the learning of our pupils.



“We all feel trusted by senior leaders not just to do our job but to make our mark. Each day I see the difference that I make. I feel empowered, supported, respected and fulfilled. That’s the magic of Myatt!”



“There's a strong community feel at Myatt and supply teachers always comment on the warm atmosphere. Staff are really friendly and always supportive of each other; it's one of the reasons why so many of us have stayed here for so long!”

Job Summary

Myatt Garden is looking for an enthusiastic, dedicated, and motivated individual to join our team as an unqualified music teacher.

We are looking for someone who

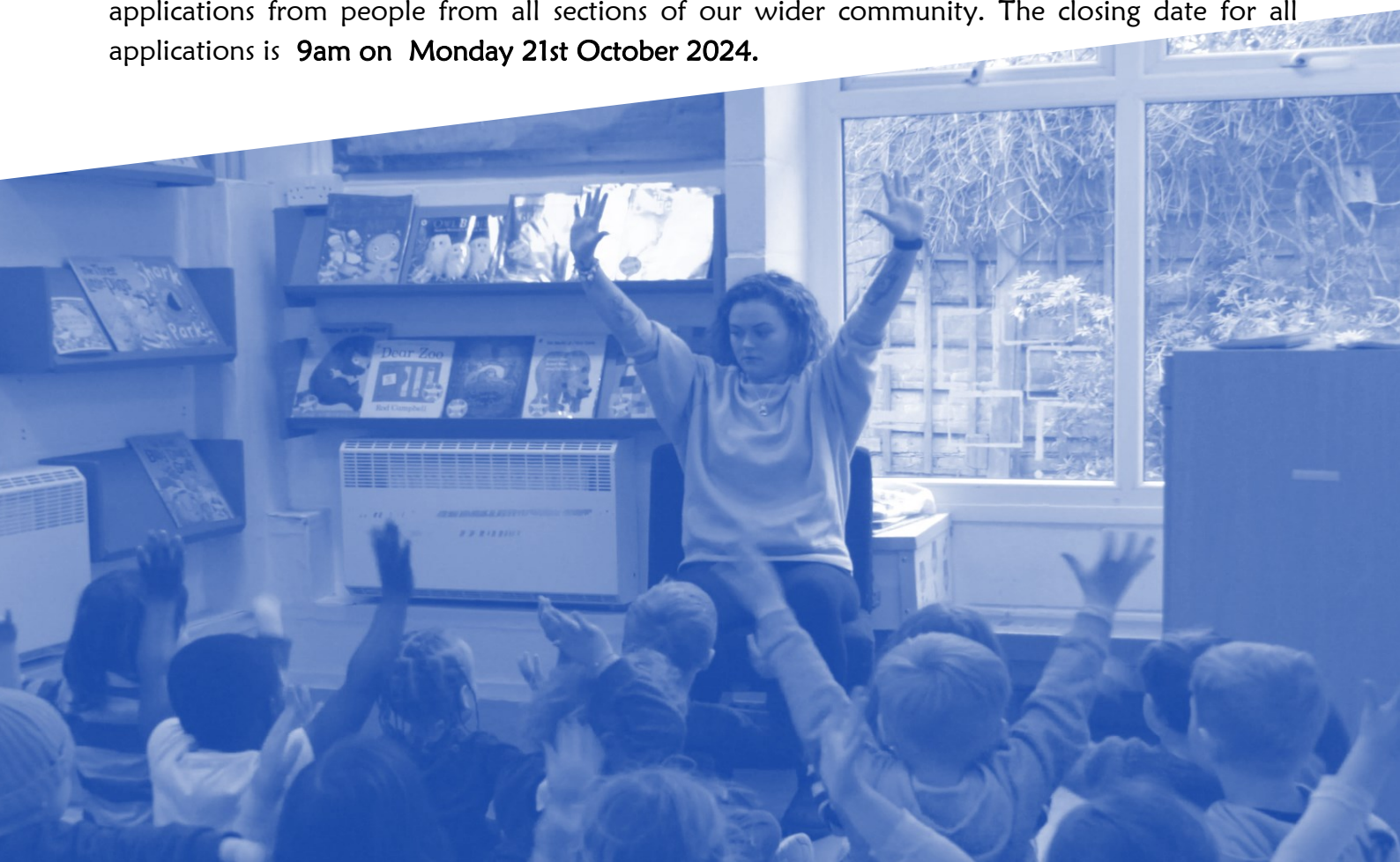
- is an excellent practitioner, with experience of teaching music successfully within a whole class setting and is committed to engendering a love of music
- has up to date knowledge and understanding of the music curriculum
- is able to perform live music at school
- is able to run a choir and lead performances both at school and beyond.

In consultation with the Deputy Head Teacher, the ideal candidate will play a key role in ensuring high quality music lessons are delivered to all pupils and will have the opportunity to manage the school's engagement in external music opportunities.

The successful candidates must be available to start in **November 2024 or as soon as possible thereafter**. This is a term-time only post working 11 hours per week over 2 days. We are offering an annual salary on the Unqualified Teacher Pay range depending on experience.

We know that the best way to get a true feel of our school and what we are like at Myatt Garden is by visiting us. We encourage all considering this role to come and visit our school.

Please contact **Eli Tabiri**, the School Business Manager, by telephone on 020 8691 0611 or send an email to recruitment@myattgarden.lewisham.sch.uk to arrange a visit. We encourage applications from people from all sections of our wider community. The closing date for all applications is **9am on Monday 21st October 2024**.



Job Description

Job Title	Unqualified Music Teacher
Pay Grade	UnqPR U1 - U6
School	Myatt Garden Primary School
Responsible to	Deputy Head Teacher
Responsible for:	N/A

MAIN PURPOSE OF JOB

To be responsible for planning and teaching whole class music lessons across the school, some of which will be PPA cover.

Duties and Responsibilities

Support for pupils

- ◆ Plan music lessons that engage pupils and ensure good learning
- ◆ Demonstrate excellent and innovative practice
- ◆ Provide clear structures for lessons maintaining pace, motivation and challenge
- ◆ Use a variety of teaching methods in order to match approach to content and use appropriate vocabulary
- ◆ Ensure pupils acquire and consolidate knowledge, skills and understanding appropriate to the subject taught
- ◆ Establish constructive relationships with all pupils and interact with them according to individual needs
- ◆ Ensure music lessons are inclusive and meet all children's needs
- ◆ Encourage pupils to think and talk about their learning, in order to develop reflection, independence, concentration, and resilience
- ◆ Set challenging objectives for lessons that reflect high expectations
- ◆ Create a positive 'can do' ethos that promotes positive self-esteem
- ◆ Provide feedback to pupils in relation to progress and achievement
- ◆ Reflect on and evaluate own teaching to improve effectiveness
- ◆ Ensure the effective and efficient deployment of classroom support

General Support

- ◆ Promote good relationships, dealing promptly with any incidents in line with school policy
- ◆ Encourage pupils to take responsibility for their conduct
- ◆ Establish constructive and supportive relationships with staff, parents/carers and pupils

Support for the curriculum

- ◆ Use agreed scheme of learning to plan a structured series of learning, adjusting according to pupil responses
- ◆ Keep abreast of any curriculum developments and work with curriculum lead on developments where appropriate
- ◆ Prepare, maintain and use equipment/resources required to meet the lesson objectives and assist pupils in their use
- ◆ Liaise with outside agencies to develop projects within and outside of school

Support for the school

- ◆ Be aware of and comply with policies and procedures relating to child protection, health, safety and security and data protection, reporting all concerns to an appropriate person
- ◆ Be aware of confidential issues linked to home/pupil/teacher/school/work and to keep confidences as appropriate
- ◆ Be aware of and support diversity and ensure all pupils have equal access to opportunities to learn and develop
- ◆ Contribute to the overall ethos/work/aims of the school
- ◆ Assist with school productions and concerts throughout the year
- ◆ Appreciate and support the role of other professionals
- ◆ Attend and participate in relevant meetings as required
- ◆ Participate in training and other learning activities and performance development as required
- ◆ Assist with the supervision of pupils out of lesson times, including before and after school
- ◆ Accompany pupils on visits, trips and out of school activities as required.

Equalities

Ensure implementation and promotion in employment and service delivery of the Council's equal opportunities policies and statutory responsibilities.

The postholder will be required to undertake other duties commensurate with the level of the post as required to ensure the efficient and effective running of the school.

This job description will be reviewed annually and may be subject to amendment or modification at any time after consultation with the post holder.

Person Specification

Qualifications & Training	Essential	Desirable
	Knowledge	<ul style="list-style-type: none"> ◆ Successful teaching experience ◆ Relevant music qualification
Skills and Abilities	<ul style="list-style-type: none"> ◆ Good music subject and curriculum knowledge, understanding and expertise ◆ Good knowledge of music, including from a range of different artists and cultures ◆ The ability to contribute to the music curriculum development and innovation across a year group ◆ How children and young people learn, develop and progress ◆ How to plan, deliver, monitor and evaluate lessons and learning as part of the school curriculum ◆ Health and safety practice and the role of the individual in promoting and safeguarding pupil and staff welfare ◆ How to promote and contribute to the implementation of equalities and inclusion policies in schools 	<ul style="list-style-type: none"> ◆ The ability to collaborate effectively and efficiently with school teams and work with parents, other professionals and agencies ◆ Communication skills, oral, written and presentational ◆ Ability to use reflections on learning to carry out well planned, organised and innovative lessons ◆ The ability to contribute to establishing, maintaining and developing positive behaviour, good order and assertive discipline in the classroom ◆ The ability to use formative assessment to inform future lesson plans ◆ The ability to create a welcoming and stimulating learning environment ◆ The ability to play a minimum of one instrument to high standard (Piano desirable) ◆ Be able to perform live music at school ◆ Be able to run a choir and lead performances both at school and

Person Specification

Personal Qualities	<ul style="list-style-type: none">◆ Enjoyment of working with children◆ Sensitivity and understanding, to help build good relationships with pupils◆ A commitment to getting the best outcomes for all pupils, and promoting the ethos and values of the school◆ Commitment to maintaining confidentiality at all times◆ Commitment to safeguarding pupil's wellbeing and equality◆ Resilient, positive, forward looking and enthusiastic about making a difference◆ Capacity to inspire, motivate and challenge children and young people	
---------------------------	--	--

Selection Process



To apply for this role please complete the accompanying application form and submit this via email to recruitment@myattgarden.lewisham.sch.uk or by post at Myatt Garden Primary School, Rokeby Road, London SE4 1DF.

All applications must be received by **9am on Monday 21st October 2024**

Shortlisting

Applications will be shortlisted by the panel on **Tuesday 22nd October 2024**

Myatt Garden is an inclusive school and as part of our Anti-Racist agenda all applications will undergo blind shortlisting.

All shortlisted candidates will be contacted via email or telephone by **Wednesday 23rd October 2024**.

Shortlisted candidates may be subject to an online search.

Interviews

Interviews will be held on **Thursday 24th October 2024**. Candidates will be observed delivering a music lesson and may be required to complete other interview tasks.

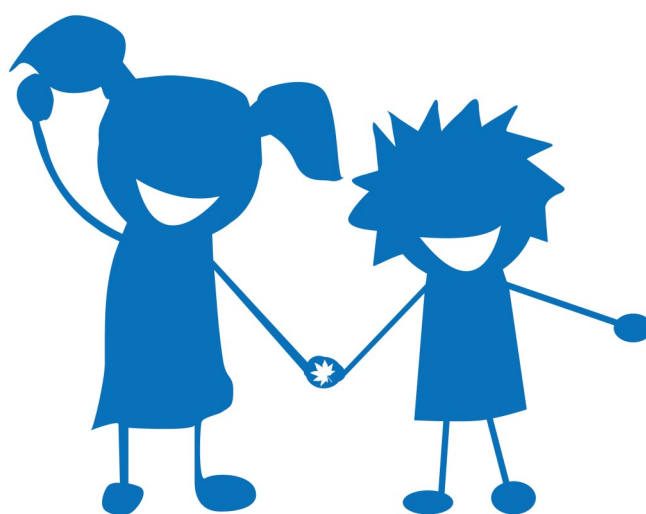
Appointment

The successful candidate would be expected to start in **November 2024** or as soon as possible thereafter.

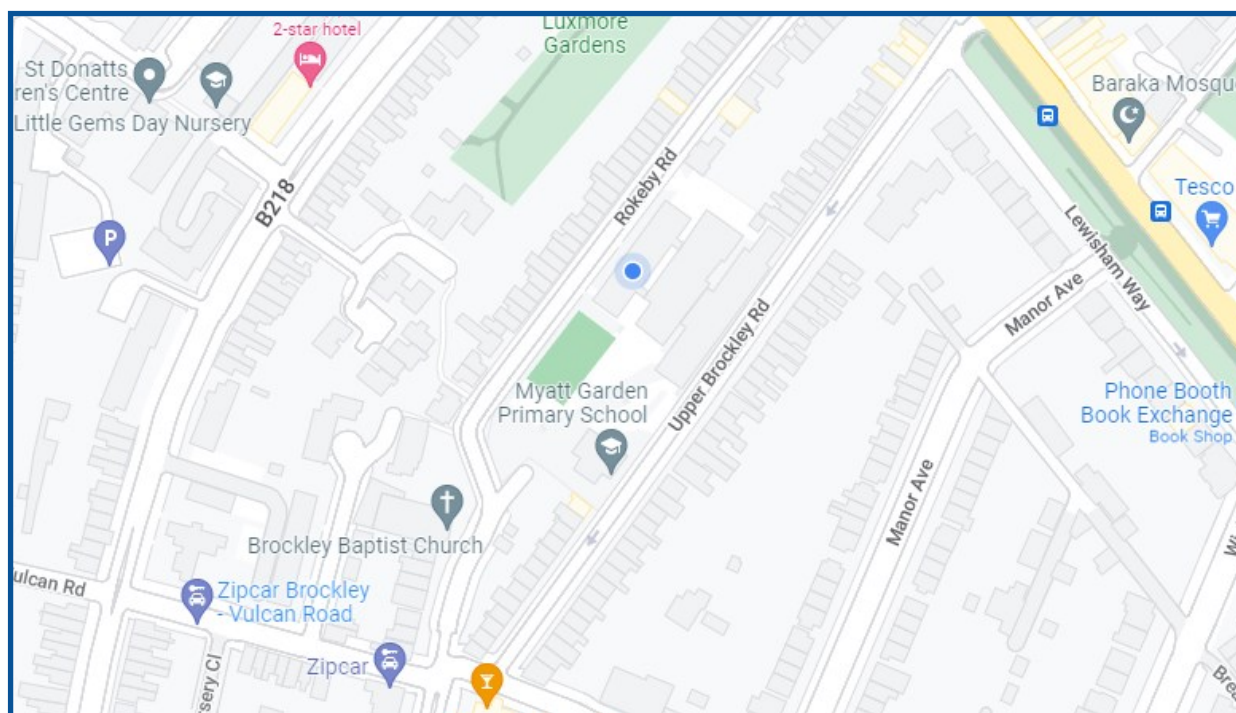
This post is exempt from the Rehabilitation of Offenders Act, any criminal conviction will need to be declared if you are appointed.

Myatt Garden School is committed to safeguarding and promoting the welfare of children and young people and expects all staff to share this commitment. Any successful appointment will be subject to an enhanced DBS check and suitable references.

If you would like more information please contact **Eli Tabiri** on 020 8691 0611 or send an email to recruitment@myattgarden.lewisham.sch.uk.



Myatt Garden Primary School



Telephone

020 8691 0611

Email

recruitment@myattgarden.lewisham.sch.uk

Address

Rokeby Road, London SE4 1DF