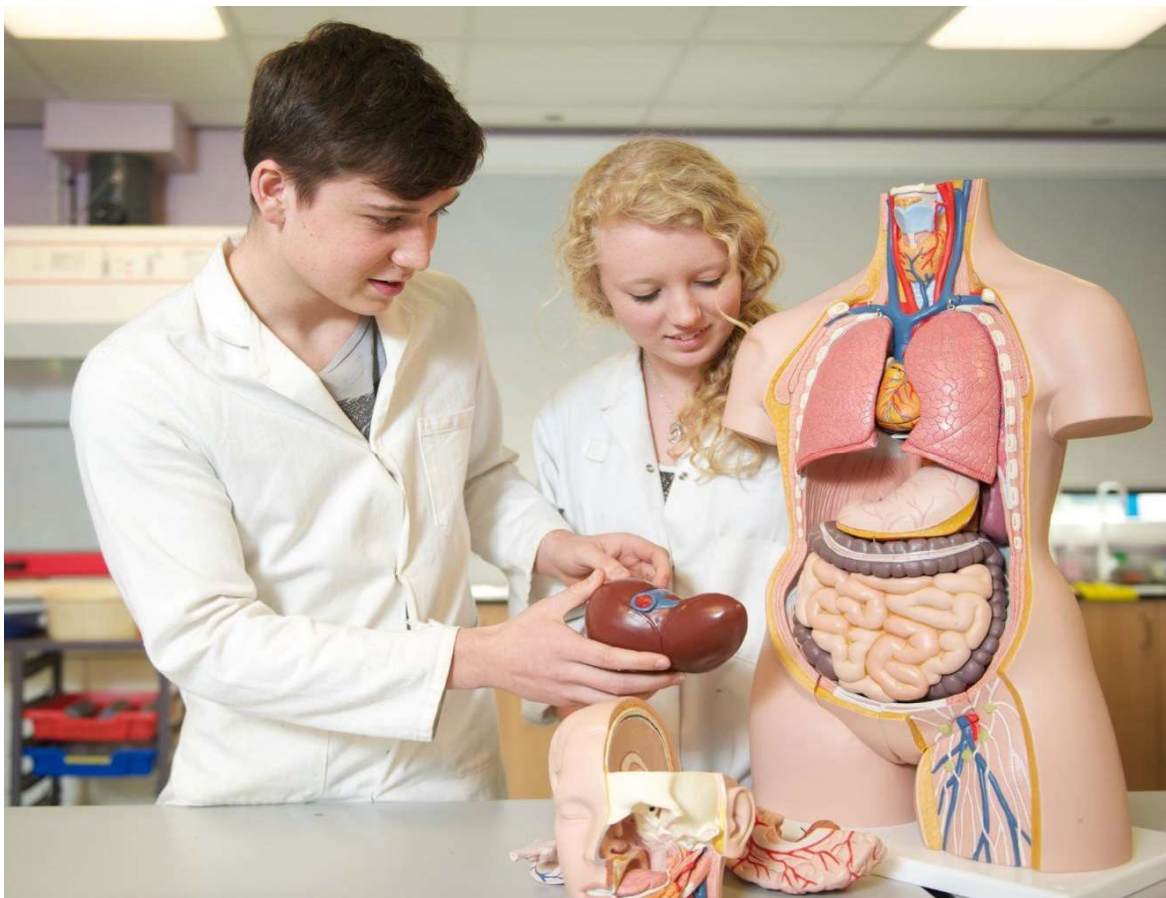




WILLIAM FARR

C of E Comprehensive School



SCIENCE DEPARTMENT

CANDIDATE INFORMATION

SCHOOL VISION

William Farr (C of E) Comprehensive School's vision is to provide all members of the school community with the opportunities to engage with 'life in all its fullness' (John 10:10) through the highest quality of education, encouragement and endeavour. We are committed to striving for excellence and ensuring that all students are known, valued and can achieve.

SCHOOL VALUES

Our core values are:

Compassion Friendship Perseverance Respect Responsibility Wisdom

Each value is associated with one of our Houses.

The students consistently attain high standards of grades, and their behaviour in lessons and around the school is exemplary - not only do they respect one another, but they have respectful and excellent relationships with all the staff.

THE SCIENCE DEPARTMENT

The Science department at William Farr School is an expanding curriculum area. The department has a mandate to maintain its excellent results and provide a Science education for the 21st Century.

The Science department is managed by a Head of Science, supported by an Assistant Head of Science and Head of Physics, Chemistry and Biology. The Science department has 14 Science teachers, a Managing Science Technician and 4 Laboratory Technicians. There are 12 large laboratories and one smaller practical room. Seven of these are all in close proximity to each other on the ground floor of one building, and serviced by preparation areas and a Science staff office. The rest are in an adjacent building still on the ground floor.

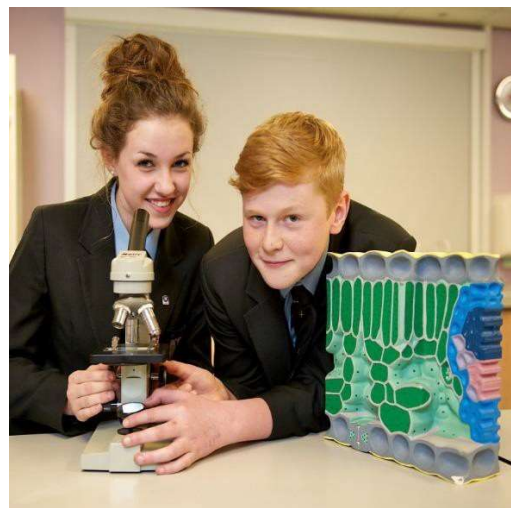
The school has in place a rigorous system of moderated departmental self-review. For several years now the department has been graded as Category 1.

The team is achieving and sustaining high standards in relation to its context. It is very well led and managed, with relevant aspects of National Initiatives securely in place. It has the capacity to plan, solve problems and further its own development.

Science pupils make outstanding progress (in the top 10% by prior attainment nationally). Planning, teaching, pupils' learning and assessment are all strengths of the subject.

Direct observations of classroom practice, together with self-evaluation activities, show that teaching and learning is consistently good or better.

The Science team has a successful profile in strategic direction and development planning. Leadership and management are outstanding in this department.



THE SCIENCE CURRICULUM

KS3 students study a curriculum based around developing young scientists that leads to preparation for GCSE study.

KS4 students follow the OCR Gateway combined specifications. A number of students also opt for Triple Science.

The department offers A-level students the options of Biology, Chemistry and Physics.

BEYOND THE CURRICULUM

The department offers a number of activities to engage students with science including:

- Science Club “Awesome Science” Y7 & Y8
- GCSE live trip for Triple Science students
- Institute of Biology – British Biology Olympiad
- Institute of Physics – British Physics Olympiad
- Institute of Chemistry – British Chemistry Olympiad
- Chemistry workshops run at lunchtimes for AS and A2
- Biannual Physics trip to CERN
- London trip to natural history museum for sixth form Biologists
- Field trip to Whisby for Y12/Y13 biologists

ACHIEVEMENT

Results in the department are consistently excellent:

GCSE results for 2020:

Combined Science 82% 9-4, Biology 100% 9-4, Chemistry 100% 9-4 and Physics 100% 9-4.

A Level results for 2020:

Biology 100% pass, Chemistry 100% pass, Physics 100% pass. Biology 59% A*-B, Chemistry 71% A*-B and Physics 58% A*-B.

PSME

In addition to teaching within the department, the successful candidate will be expected to contribute to the school's Care and Guidance programme, including the delivery of PSME (Personal, Social and Moral Education) as part of his or her form tutor responsibilities.



“William Farr Church of England Comprehensive School is one of the best schools in the country at outperforming expectations for their pupils and improving their future prospects.

There is plenty that other schools could learn from William Farr Church of England Comprehensive Schools’ success.”

Sue Williamson, Chief Executive of SSAT

William Farr Church of England School

Lincoln Road, Welton, Lincoln LN2 3JB

T: (01673) 866900 F: (01673) 862660 E: wfarr@williamfarr.lincs.sch.uk

www.williamfarr.lincs.sch.uk