



Co-op Academy
North Manchester

Pastoral Manager Candidate Pack

*Together, we have the highest aspirations and expectations so that every-
one achieves excellence in all they do and is equipped to lead happy
and successful lives."*

"WORKING TOGETHER FOR THE BEST IN EVERYONE"

Welcome

Dear Candidate,

I am delighted that you have shown an interest in our Pastoral Manager vacancy here at Co-op Academy North Manchester.

Co-op Academy North Manchester's vision is 'Together we have the highest aspirations and expectations so that everyone achieves excellence in all they do and are equipped to lead happy and successful lives.' The vision and values of the Academy and those of Co-op Academies Trust are at the heart of all that we seek to achieve and are evident throughout the school.

You will be joining us at an exciting time as the academy enters a period of growth. Together we have been really successful but now we need to increase our Pastoral support so that we can secure an even better future for our pupils, staff and wider community.

Here at Co-op Academy North Manchester, we take time to know our pupils and have the highest expectations and aspirations for them. Our pupils are polite and courteous and excellent relationships are at the heart of our success. Pupils know that our staff are approachable and that any concerns that they may have will be dealt with.

We are committed to ensuring that pupils have the support and resources that they require to overcome any barriers to learning and any challenges which they may face. The academy prides itself on offering a rich curriculum that includes an extensive range of extra-curricular activities and clubs for all pupils which promotes their understanding of the world in which they live and the difference that they can make within it. Our Safeguarding/PSHE/SMSC and Careers curriculum is a strength of the academy and pupils develop a range of skills that enable them to be confident to be who they want to be. A broad range of pupil leadership opportunities exist for our pupils. Pupils are not only encouraged to take part in these, but to demonstrate a tangible impact across many different areas of the academy and beyond.

Strong leadership has been at the heart of our success. Our leaders are committed and reflective individuals who are themselves empowered, but who also have the ability to both inspire and empower others to realise our academy's vision. We understand and implement the Co-op Ways of Being of: 'succeed together', 'show you care', 'be yourself always' and 'do what matters most', understanding the unique importance of each as well as how they must be implemented together to ensure that success is achieved in the 'right' way.

We do hope that once you have read the information provided in this pack, you are excited by the prospect of joining us and are keen to be a part of our next chapter. If you would like to experience the academy first hand please contact Michelle Campbell-Jones, PA to the Leadership team at michelle.jones@coopacademies.co.uk to book a tour of the Academy

With warmest wishes,

Sharon Hands
Principal

Ofsted Report - <https://reports.ofsted.gov.uk/provider/23/142762>

"Pupils' behaviour is good.
They are courteous, happy
and confident. Pupils'
conduct around school and
attitudes to learning
are positive"

Ofsted 2019



Our Trust

Through a great education The Co-op Academies Trust are changing the lives of young people across the North of England. Built on the same principles as all co-operatives across the world, we work to empower our staff and our young people to work together for a better education and a better community.

They have consistently been one of the highest performing multi-academy trusts in the Government's Multi-Academy Trust League Table, also being recognised by the Sutton Trust Charity and the Education Policy Institute as one of the top performing multi-academy trusts for disadvantaged pupils.

What makes our Trust unique is that we are sponsored by the Co-op Group. That close relationship means that we benefit from all of the business expertise that has seen the Co-op grow to one of the most respected, ethically driven and successful businesses in the country.

You can find out more about our Trust by visiting www.coopacademies.co.uk

Safeguarding

We take safeguarding very seriously at North Manchester and it is important to us that all pupils feel happy and safe in and out of school. We have a large team who are trained in all aspects of safeguarding and we have a comprehensive continuing professional development package to ensure we are always up to date and current. I am often asked by people what the challenges of being a safeguarding lead in an inner city secondary school are but I always remind people that in our school, we work to our belief that safeguarding is everyone's responsibility and we work hard together to keep children safe. If you want to work in an environment where no two days are the same but every day is rewarding, then do consider applying.

Mr M Halshaw
Assistant Vice Principal Behaviour

"A strong culture of safeguarding exists throughout the school. Pupils say that staff know them and care about their well-being"

Ofsted 2019

Mental Health & Wellbeing

We have always been at the forefront of looking after both pupil and staff mental health and wellbeing and we have extended this even further in recent years. We have a range of workload and wellbeing strategies, ways of working which keep us connected as well as a very strong employee assistance offer. Here at Co-op North Manchester, we value the individual and ensure that we have access to counselling services, our resident EP as well as lots of events such as Time to Talk, our Mile Walk and other therapeutic services which benefit pupils in many ways. We are really proud of our mental health and wellbeing offer. If you believe, as we do, that mental health and a strong sense of identity and community is as important as academic success or physical health, then we'd love to hear from you.

Mrs S Fiddler
Assistant Vice Principal Behaviour & Community

"Bullying records show that incidents of bullying are followed up and resolved effectively"

"Pupils are taught how to keep themselves safe from the risks of exploitation, including when using social media"

Ofsted 2019

Behaviour and Attendance

The tools for strong attitudes to learning such as resilience, confidence and self-esteem are encouraged and developed as part of Co-op North Manchester's curriculum. As a Maths teacher myself, I find my time in the classroom stimulating and rewarding. The strength and quality of relationships, underpinned by the respect and trust between staff and pupils ensures that teaching at the academy is an extremely enjoyable experience. We work hard to instil high levels of engagement in the classroom and are committed to ensuring that pupils are challenged if we think they could improve. The academy needs staff who are committed to bringing out the best in our pupils and who will have the highest of expectations of them; if that's you, then please get in touch.

Ms R Hepworth
Vice Principal Behaviour, Personal Development & Welfare

"Pupils enjoy school, attend regularly and learn well"

"The actions of leaders to improve the attendance of pupils, which was previously extremely low and a major factor contributing to their weak progress, is now consistently good"

Ofsted 2019

Associate Staff CPD

Our associate staff training offer is wide and again, regularly reviewed. Our offer includes but is not limited to:

- Leadership at all levels course- internally facilitated
- An internal CPD programme which is planned in advance and runs across the year designed by a member of the Leadership team and is reviewed annually in the light of appraisal conversations so that we can be sure we are meeting all staff needs.
- Internal CPD such as:
 - ⇒ ACEs, trauma informed practice
 - ⇒ Mental Health First Aid
 - ⇒ First Aid
 - ⇒ Safeguarding
 - ⇒ ELKLAN
 - ⇒ G-Suite
 - ⇒ Systems operations & Management
- External courses such as SISRA Training, Manual Handling, First Aid and Food Hygiene are available and can be applied during the year; attendance is negotiated with line managers so that we can be sure we have value for money and it meets whole team needs. We also have staff trained in specific issues, for example, bereavement and additional training is offered throughout the year.

Wellbeing

Wellbeing is articulated in the cornerstone of our vision in terms of everyone leading 'happy and successful' lives but we also recognise that a 'one size fits all' approach is not appropriate. What would be useful for one person may not be what another needs in order to feel happy and confident. We respect each other, our environment and ourselves and our wellbeing offer underpins that commitment. To ensure the Academy is a healthy and safe place to be means that our wellbeing offer is varied, personalised and changes dependent on the needs of the people in the organisation at any one time.

Examples of some of the approaches we use to support mental health and happiness:

- ⇒ Time to talk
- ⇒ Access to counselling service
- ⇒ Mile walk
- ⇒ Mindfulness
- ⇒ Free tea and coffee
- ⇒ Policies contributed to by staff
- ⇒ Your Voice Survey
- ⇒ Our commitment to a values led organisation
- ⇒ An extensive extra curricular offer
- ⇒ CPD programme
- ⇒ Workshops on identity, diversity and community
- ⇒ Parent support for issues such as e-safety, self-harm and self esteem

Middle Leadership

Our middle leadership works closely with the Senior Leadership team and there are opportunities to work on development across school. There are a number of training opportunities available such as:

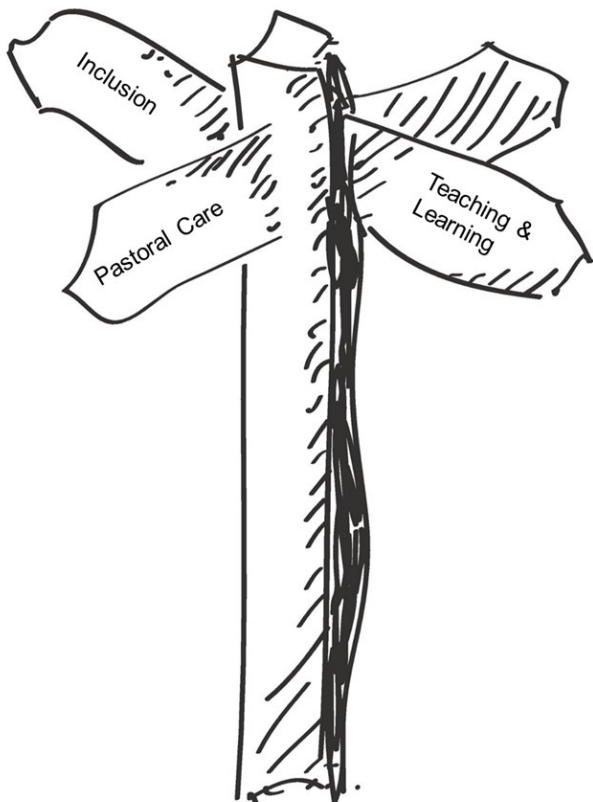
- The CSLE programme - the Co-operative Senior Leadership in Education programme
- NPQSL
- Job shadowing and working with those we host on leadership residencies
- Weekly Middle Leader training and contribution to leading elements of these
- NCE Levels 3, 5 and 7
- NPQs



Leadership Development

At Co-op Academy North Manchester, all staff, are encouraged to lead in a variety of ways. Leading some, part or even a whole of one of the experiences listed allows you to:

- Work with pupils whom you may not necessarily teach
- Build strong relationships
- Collaborate with staff in different subjects and roles across the Academy
- Be an important part of providing the rounded education at the heart of our vision and values.



Being committed to leading in the classroom is one thing, investing time in pupils beyond that to develop them as leaders is extraordinarily powerful.

Take a look at our 52 ways you can lead on the next page. There are many, many more and we are always open to new ideas and approaches.

Our 52 suggestions are just that but they do allow us to work across the pastoral and academic spectrums and work with young people as the whole child. It's also what pupils remember when they leave and ask for more of when they talk to us in 5 a day.

52 ways to lead

Trip or Visit	Charity Event	Pastoral Meeting	Assembly
Intervention	Lunchtime club	Sporting club	STEM activity
Teachmeet	Eco Club	Arts project	Blog
Lecture	IRIS group	Reading group	Literacy activity
Co-op project	CPD session	Masterclass	Transition
Social Action Project	Extra-Curricular Activities	Teaching & Learning group	Rewards initiative
Lesson Study trio	Research-based project	Theatre experience	Mental Health First Aid
Learning Environment	How to revise session	Enterprise project	Anti-bullying ambassadors
Fundraising Campaign	Staff/Pupil event	Coaching group	Attendance initiative
Fairtrade project	Presentation to leadership	Give a pupil lecture	Homework hub help
Inter-form competition	Working party	Department Meeting	Year group challenge
Homework initiative	Ways to say thank you	Pupil voice activity	Scheme of Learning
Cross-curricular activity	Campaign e.g. plastic reduction	Guest event e.g. poet, artist, speaker	Events/activities for the community



Co-op Academy
North Manchester

"Leaders promote positive values clearly and consistently. They support a culture where pupils are confident, considerate of others and hard-working"

Ofsted 2019

Pastoral Manager Job Description

Salary: Grade 6—£28,335- £32,245 pro-rata (actual £24,890.00—£28,324.00) 37.5 hours

Term time only +10 days

Purpose of the role

Location: Co-op Academy North Manchester

The Pastoral Manager is a key position within the academy, responsible for the personal development and welfare of all pupils within their year group so that every child can leave the academy equipped to lead a happy and successful life. As Pastoral Manager, you will be a highly motivated, organised and flexible individual who can enable pupils to maintain excellent learning habits and high levels of independence and resilience.

The successful candidates will possess excellent leadership, management and communication skills and will have demonstrated an ability to work with young people and their families successfully. They will be aware of some of the challenges facing young people yet hold the highest aspirations for Co-op North Manchester's pupils. They will also be committed to and use strategies that will ensure that all pupils are given the very best opportunities to be successful in all areas of their lives

We are looking for Pastoral Managers with experience of working with young people to secure excellent outcomes and who are able to develop and sustain strong routines, inspire pupils to engage widely across school. They will ensure all pupils engage strongly in extra-curricular activities and develop a range of leadership roles within their year groups who maintain the highest of standards at all times.

Each year group has a Pastoral Manager or Head of Year and a group of form tutors. There is an attendance officer, Deputy Designated Safeguarding Lead, Designated Safeguarding Lead and Safeguarding Officer who also support the year team.

Co-op Academy North Manchester offers high quality CPD for its staff alongside a Co-op benefits package. It is expected that the successful candidate will be committed to their own continuing professional development and also take opportunities to continue to develop others. The academy has an Associate Staff Lead for CPD and offers bespoke training as well as opportunities across Co-op Academies Trust.

The academy is part of the Co-op Academies Trust and it is therefore expected that the successful candidate will be committed to both the vision and values of the academy and the demonstrating these within their role.

Shaping the Future

The Pastoral Manager will work with the Pastoral Team and members of the leadership team to create and deliver a shared vision for the personal development, attitude to learning and safeguarding for all members of the Academy community.

- Developing the strategic vision and direction for the Academy, based on analysis of local and national need.
- Ensuring that the Pastoral offer reflects the Academy's vision and values and those of our Trust.
- Playing an active role in raising the aspirations and ambitions of our pupils, their families and carers and the local community.



Specific Areas of Responsibility

Leadership of a Year Group

- Work collaboratively with Form Tutors and other members of the academy's pastoral team to ensure the highest standards of attendance, uniform, attitudes to learning and outcomes for all pupils in the year group, ensuring every pupil achieves the best possible outcomes.
- Lead the monitoring and tracking of progress, attendance, punctuality and attitudes to learning for all pupils in their year group
- Ensure that any pupils who have particular needs whereby their behaviour and attendance falls below the academy's high expectations, demonstrate improvement with necessary support and guidance.
- Write, implement and review an annual pastoral development plan for the year group.
- Be a visible presence around the academy modelling high standards, motivation and persistence.
- Ensure that inclusion permeates the year group where identity is celebrated and difference is valued.
- Ensure that clear routines are promoted within the year group both within and between lessons and during social time
- Be the key contact for parents and carers of pupils within the year group

Attendance

- Lead the monitoring and tracking of attendance and punctuality for all pupils in the year group, ensuring that all pupils have a strong focus on this area so that they can achieve.
- Work collaboratively with the attendance team and other pastoral leaders to analyse absence and persistent absence rates ensuring that the attendance of all pupils in the year group is in line with or very close to national averages.
- Work collaboratively with the attendance team and SENDCO to ensure that attendance for the most vulnerable and SEND pupils in the year group are above national averages.
- Ensure that attendance policies and procedures are followed and consistently applied across the year group
- Organise and take part in targeted intervention programs to raise standards of attendance for individual pupils and groups of pupils
- Ensure that where a pupil has been absent from the academy they are supported in catching up on work missed and reintegrated successfully into the school

Attitudes to Learning

- To be a visible, proactive presence around the academy, promoting positive attitudes to learning from all pupils.
- To undertake regular climate walks to ensure high engagement from all pupils in all lessons positively reinforcing excellent attitudes to learning displayed in the year group.
- Maintain an overview of attainment of key groups and individual pupils and ensure academic interventions are attended
- Ensure standards of uniform, equipment and conduct are exemplary through the implementation of robust systems and checking mechanisms
- To model for all staff exemplary practice in terms of managing difficult and challenging behaviour from pupils
- Liaise with others in the implementation and development of the rewards and sanctions programmes in line with academy policy to ensure the academy's vision and values are achieved and that the academy continues to have a positive and reflective culture
- Actively lead and promote opportunities for pupil leadership within the year group ensuring that pupil uptake for volunteering is high
- Provide cover for the Remote Learning Supervisor and maintain excellent standards of behaviour in the Remote Learning Room

Mental Health & Wellbeing

- Promote mental health and wellbeing, know how to support pupils and be the first point of contact for pupils with regards to extra support which may be needed
- Be a mental health first aider
- Understand the academy's work on ACES and be committed to being trauma informed with an understanding of what this means for pupils and their families
- Lead a rewards strategy across the year group and ensure rewards are attributed fairly in line with academy policies
- Lead detentions and ensure sanctions are applied consistently and fairly in line with academy policies
- Work within the school community to ensure that there are strong and effective relationships across all areas of the academy.
- Support the academy's professional development of all staff within the areas of behaviour, attitudes and personal development.
- Support and advise all members of Academy staff to ensure high standards of behaviour and attitudes to learning are secured throughout the Academy environment, ensuring that there is a calm and orderly environment which enables pupils to both learn and thrive.
- Keep up to date with political and social issues which affect pupils and be committed to organising workshops and other such activities designed to ensure a no tolerance approach to all forms of discrimination
- Actively celebrate diversity and champion the Coop Ways of Being and the academy values across all pastoral areas
- Ensure that there is a well developed extra-curricular offer for the year group and that each child takes up this opportunity.
- Ensure that regular pupil voice informs the development of the year group and academy as a whole.
- Organise and take part in parent/carers meetings and events including the parent/carers forum to ensure that parents/carers are fully involved in their child's development.
- Contribute to pupil voice and pupil leadership programmes, ensuring that these are both offered and developed and that uptake is high.
- Work in partnership with other leaders to ensure key areas of the academy development plan are achieved consistently.
- Establish a strong sense of identity and belonging in the year group

Behaviour & Safeguarding

- Track and monitor standards of behaviour and behaviour data for the year group, ensuring that the relevant policies are consistently applied and that excellent attitudes to learning and behaviours permeate throughout the year group.
- Use behaviour data to evaluate, respond and make changes and recommendations
- Ensure consistent application of the Academy Behaviour for Learning Policy and involvement in activities linked to the application of that policy including internal and external exclusions so that fixed term exclusions are managed successfully
- Improve standards of behaviour both for individual pupils and the year group as a whole.
- Organise and take part in targeted intervention programs for individuals and groups of pupils within the year group.
- Make contact with parents to review pupil behaviour patterns and identify actions needed to improve standards of behaviour/ attitudes to learning and progress and in turn build strong relationships with parents and carers.
- Arrange and promote reward activities within the year group in line with academy policies.
- Take steps to prevent bullying ensuring that there is an environment where pupils feel safe and that bullying and discrimination is not accepted. Should this occur, ensure that the academy policies are adhered to and that this is dealt with quickly, consistently and effectively.
- Take relevant actions to ensure all pupils in the year group are effectively safeguarded making relevant referrals where appropriate and working with multi agencies where necessary.
- Work closely with the DDSL and DSL to ensure effective safeguarding practices are in place across the year group.
- Undertake a series of duties ensuring that pupils are safeguarded and observed during social times and between lessons
- Hold regular year group and pastoral meetings and ensure that opportunities to share good practice exist, e.g. through lesson study or IRIS take place.
- Support the development and maintenance of Academy policies and practices and ensure consistent application.
- Sustain effective, positive relationships with all staff, pupils, parents/carers, Governors and the local community and be an excellent ambassador for the academy.
- Manage budget(s) in line with areas of responsibility.
- Organise and lead off site trips and visits
- Be a first aider

Curriculum and Personal Development

- Ensure form groups have appropriate areas for display of information and that these are kept up to date.
- Ensure that pupils' work is of a high quality and pride is taken in books
- Ensure that form time is productive and work with others to ensure it is delivered in line with the academy's visions and values and enables the effective delivery of the SMSC/Safeguarding and wider curriculum.
- Liaise with other relevant support agencies both inside and outside of the academy to ensure all pupils can achieve to the best of their abilities and feel safe.
- Communicate key issues regarding individual pupils to relevant members of staff.
- Have oversight of the educational provision and outcomes for any pupil educated off site within their year group.
- Deliver meaningful assemblies as part of the academy programme to support pupils to better understand the academy's vision and values and those of the Trust.
- Ensure that all pupils are committed to their learning and are supported to develop skills so that they know how to study effectively, are resilient to setbacks, and take pride in their achievements and their work.
- Work collaboratively with middle and senior leaders to improve academic outcomes for pupils.
- Support staff in ensuring pupils follow routines and that low level disruption is not tolerated
- Ensure that systems to communicate and collaborate with form tutors and other key colleagues exist regarding important aspects of pastoral information.
- Work collaboratively with leaders at all levels to ensure strong engagement in the curriculum and improved academic outcomes for pupils, including identifying patterns of low level disruption and working with colleagues to address this
- Contribute to support programmes for pupils and staff that may, on occasion, include weekends and holiday periods
- Contribute to the personal development, safeguarding and PSHE, Citizenship and RSE curriculum in order that all pupils develop within this area
- Attend and contribute to pastoral leadership and other relevant meetings, supporting others as required.
- Any other reasonable duties as requested by the Principal.

Key Events Responsibilities

- Pupil/parent/carer events relevant to the year group, including curriculum information and parents/carer evenings and academy open days.

Key Documents Responsibility

- Relevant contributions to the Academy SEF
- Pastoral Development Plan
- Pupil voice
- Pupil PEFs, PSPs
- Attendance and behaviour summary reports
- Relevant contributions to the Academy Improvement Plan.
- Relevant policy and practice contributions for the Staff Handbook.
- Relevant reports to Governors, including Principal's report to Governors.

Person Specification

	Essential	Desirable
Qualifications, Educational, Training	Recent relevant in-service training and qualification	Post-graduate qualification. Professional middle leader qualification
Relevant Experience	Experience of and commitment to involving parents in the education of their children. Experience of working with wide range of agencies and the wider school community. Evidence of involvement in pastoral work within a school including safeguarding, attendance, inclusion and behaviour	Evidence of a contribution to wider educational issues.
Knowledge, skills, abilities	Very good oral and written communication skills. Excellent classroom management and a strong role model to other staff. Ability to generate enthusiasm for learning. Ability to work as part of a team. Ability to plan, organise review and adapt approaches Excellent ICT skills including knowledge of G-Suite Knowledge and experience of pastoral roles. Demonstrates commitment and passion for ensuring the achievement of all pupils regardless of background and/or ability. Knowledge of the key role that attendance and behaviour play in attainment and ability to demonstrate impact in these areas.	Knowledge of SIMs or similar. Previous experience in a pastoral role.
Leadership	Ability to lead a team. Ability to motivate, support and inspire trust in others. Ability to confront and resolve problems. Experience of line management and developing others. Experience of leading initiatives.	Ability to innovate and manage change. Ability to lead initiatives across the academy.
Others	A passionate commitment to developing the very best in young people. Tact and diplomacy in all interpersonal relationships with the public, pupils and colleagues at work. Personal commitment to the Academy's policies and code of conduct. A commitment to further training and a willingness to participate in relevant CPD. Willingness to be engaged in partnership and community activities. Commitment to the aims and ethos of the Academy. A positive approach to challenges, which seeks solutions to problems and addresses difficulties with cheerfulness and good humour. Flexibility and a willingness to be involved in change. To be prepared to work flexibly outside the Academy hours. Have relentless focus on ensuring that the values and vision of both the Academy and the Trust are evident in all aspects of their role.	Ability of delivery CPD Coaching and mentoring training
Safeguarding	Commitment to demonstrating a responsibility for safeguarding and promoting the welfare of young people.	Further safeguarding qualifications and CPD within this area.

Additional Information

General Enquiries

Any general enquiries should be directed to Michelle Campbell-Jones michelle.jones@coopacademies.co.uk

Informal Discussion

If you are interested in applying and would like to have an informal discussion about the role with the Principal or Vice Principal please contact Michelle Campbell-Jones.

How to Apply

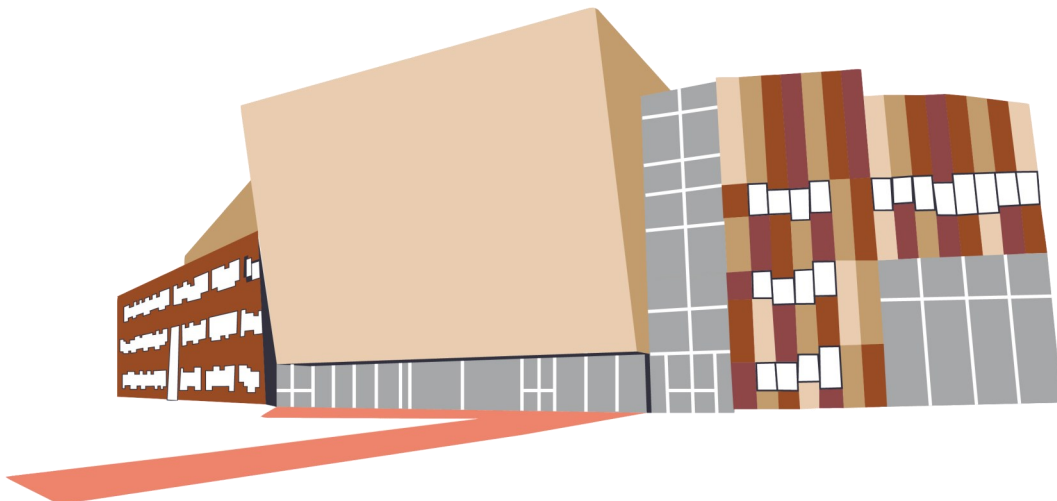
All applications must be made using the Trusts application form, which can be found on our website.

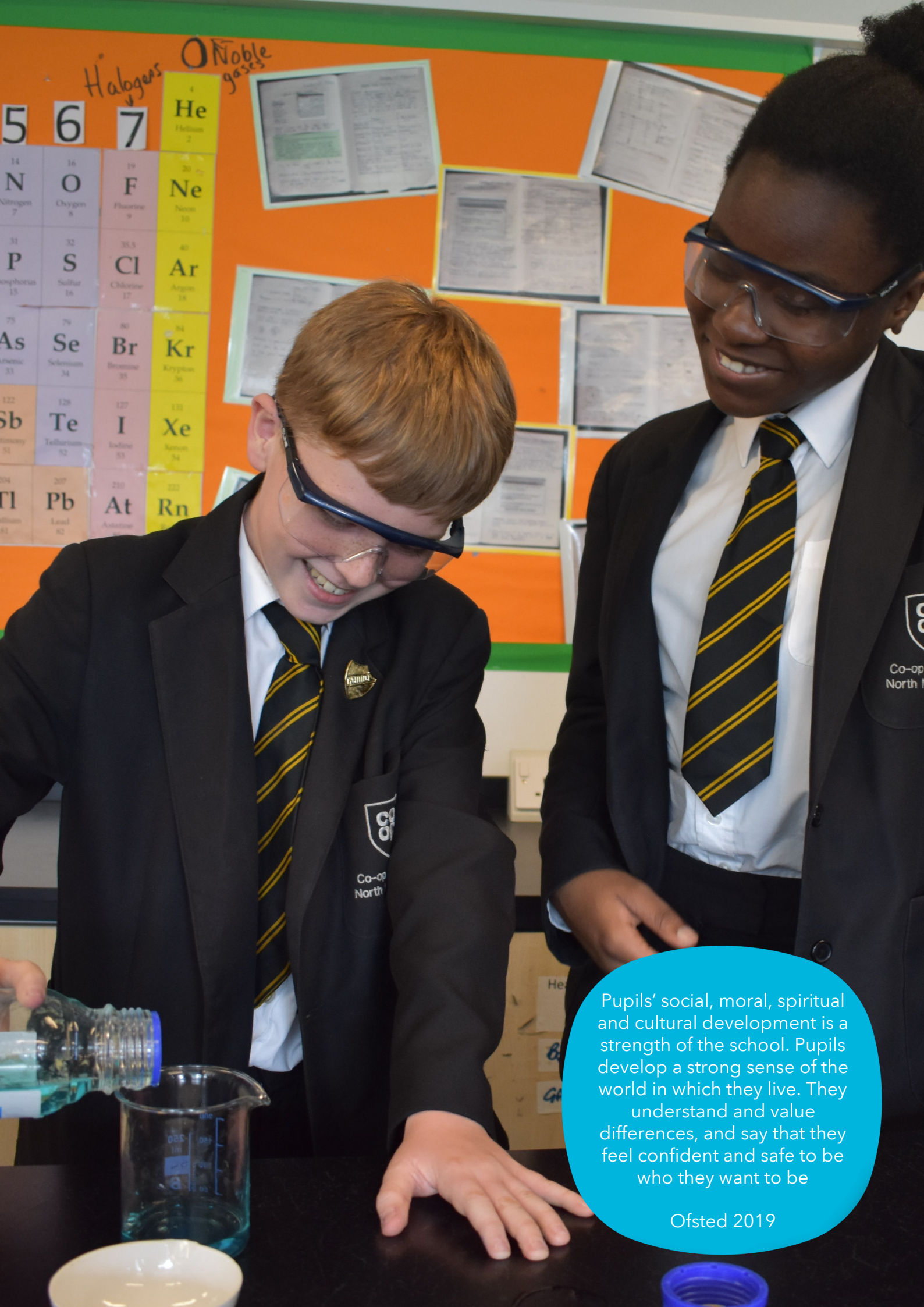
Please return your completed application electronically to noma-jobapplications@coopacademies.co.uk

All applications will be acknowledged on receipt.

The closing date for applications is 9am on Wednesday 8th June 2022 and shortlisted candidates will be invited for interview the week commencing 13th June 2022.

Co-op Academies Trust as an aware employer is committed to safeguarding and protecting the welfare of children and vulnerable adults as its number one priority. This commitment to robust recruitment, selection and induction procedures extends to organisations and services linked to the Trust on its behalf. This post is subject to an enhanced DBS check. We value variety and individual differences, and aim to create a culture, environment and practices at all levels which encompass acceptance, respect and inclusion. All our colleagues are expected to demonstrate a commitment to co-operative values and principles.





Pupils' social, moral, spiritual and cultural development is a strength of the school. Pupils develop a strong sense of the world in which they live. They understand and value differences, and say that they feel confident and safe to be who they want to be

Ofsted 2019

Co-op Academy North Manchester
noma-enquiries@coopacademies.co.uk
northmanchester.coopacademies.co.uk

0161 681 1592

300 Victoria Avenue East Blackley, Manchester, M9 7SS



Co-op Academy
North Manchester