

Whipton Barton Federation KS2 Teacher Vacancy



“The thing I love most about being an ECT at Whipton is how our options are not limited, we are encouraged and supported to achieve our ambitions.”
Bethany Harris, Year 4 Teacher and ECT

TABLE OF CONTENTS

- Key Details 1
- How to Apply 1
- About Whipton Barton Federation 2
- A Warm Welcome from our CEO 3
- Job Description 4
- Person Specification 5
- #lifeattedwragg 6
- The Ted Wragg Institute 7
- Our Ted Wragg Standard 8
- Our Benefits 9
- Our Trust Journey 10



Key Details

Salary

MPS

Location

Exeter

Hours

32.5 hrs

Interviews

28th April 2025

Closing date

21st April 2025

Required from

September 2025

“We believe that brilliance begins with excellence, bravery, and citizenship.”

How to apply

For an informal conversation about the position please contact Recruitment at recruitment@whiptonbarton.org or telephone 01392 466072.

An application pack can be found at <https://www.tedwraggtrust.co.uk/vacancy> or click on the apply now button



Whipton Barton Federation

At Whipton Barton Federation, we believe that brilliance begins with excellence, bravery, and citizenship.



We encourage every child to strive for excellence, fostering a love of learning and a strong foundation for future success. We nurture bravery by encouraging pupils to embrace challenges, stand up for their beliefs, and grow through meaningful experiences and diverse enrichment opportunities. Citizenship is promoted by teaching kindness, respect, and responsibility, guiding our pupils to be thoughtful and active members of their school and community.



Together, we aim to shape confident, compassionate learners who are ready to make a positive difference to the world.



“I felt so welcome from day one - there is a friendly supportive atmosphere as soon as you walk through the door. Starting in the summer term was really helpful to get to know the school, staff and children before having my first class in the September.”

Rachel Williams Reception Teacher

A Warm Welcome from our CEO



An ambitious and inclusive Trust of schools strengthening our communities through excellent education.



Moira Marder, OBE

On behalf of the Ted Wragg Trust, I would like to thank you for your interest in working for our Trust. This is an excellent opportunity to join our Trust and work in one of our 17 schools.

In our **ambitious** and **inclusive** Trust of schools we know that every individual is critical to help us to achieve our collective mission to **transform lives, strengthen communities** and **make the world a better place**.

Our values driven, growing 2-18 Trust, has the highest expectations for every child, every day, with social justice at our core. In this pack you will find out more about how we **support, develop** and **grow great people**.

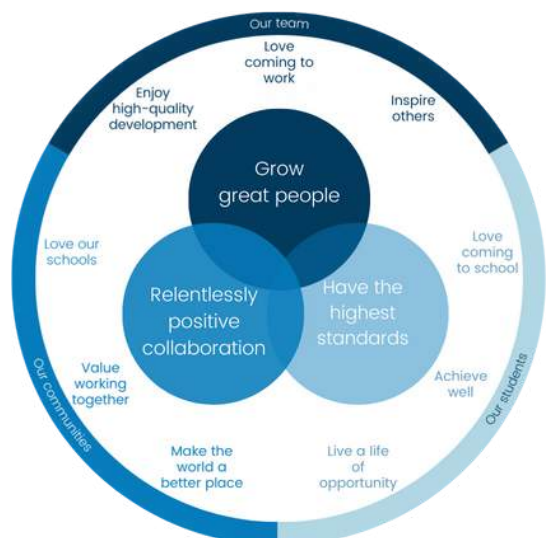
This is a hugely exciting time for our Trust as we continue to grow, embed, improve and innovate to **improve the life chances of all children** in the South West.



We demonstrate our love through our values



How we will succeed



Job Description

Primary Teacher

Key purpose of the role

Enable the Trust to realise its mission to 'Transform lives, strengthen communities and make the world a better place' by providing a high calibre teaching and learning environment, challenging the educational and social disadvantage in the South West.

Your responsibilities

- Live our mission and values every day
- Promote safeguarding policies and procedures to protect students maintaining a culture in which students are protected and achieve the best outcomes
- Meet Teachers' Standards and pursue continuous professional development
- Prepare, deliver, and review effective lessons in accordance with schemes of work and our Trust learning model
- Reflect on your own lessons, curriculum resources and interactions with all students and stakeholders to find areas for continued improvement
- Use adaptive teaching to meet diverse student needs and maximize potential
- Foster a positive, safe, and inclusive classroom environment, ensuring that your work is equitable and values the diversity and experience of the whole school community Implement strategies for high standards of behaviour and attendance
- Complete assessment, recording and reporting procedures.
- Participate in great management meetings, coaching, and external quality assurance.
- Participate in at least fortnightly coaching
- Fully understand and implement all exam requirements
- Support students with pastoral responsibilities and enrichment activities
- Carry out any other reasonable duties as requested by Headteacher or Line Manager

Your key objectives

To support students to:

- Love coming to school
- Achieve well
- Live a life of opportunity

To support colleagues to:

- Love coming to work
- Build high quality professional relationships with Trust networks Inspire others

To support communities to:

- Love our schools
- Value working together
- Make the world a better place



Person Specification

Qualifications

- Qualified Teacher Status
- Good honours degree
- Further CPD or relevant qualifications

Essential
Essential
Desirable

Experience

- Strong teaching ability – demonstrated through previous experiences
- Track record of excellent outcomes
- Working in areas or school communities with high levels of SEND and/or deprivation

Essential
Desirable
Desirable

Key skills

- Able to fulfil all aspects of the role with confidence and fluency in English
- Excellent subject and relevant curriculum knowledge
- Meeting and effectively delivery of all the teaching standards.
- Effective use of formative assessment
- Adaptive teaching that challenges and supports all students
- Ability to receive and act on feedback
- Commitment to safeguarding
- Desire to develop yourself

Essential
Essential
Essential
Essential
Essential
Essential
Essential

Values

- **Ambitious:** you work hard, have the highest standards and are positive for the future
- **Selfless:** you are self-aware, emotionally intelligent and are able to support yourself and others to thrive. You work selflessly to support the Trust's mission and strategic priorities
- **Collaborative:** you build strong relationships and networks

Essential
Essential
Essential



#lifeattedwragg

We know that our people are our **greatest asset** and research tells us that happiness at work is directly linked to student happiness and consequently **student outcomes**.

We are working hard to make sure that all our employees **love coming to work**.



Our Trust is dedicated to fostering an environment where employees can **reach their full potential, with dignity, respect, and equal opportunities for all**.

We value the unique contributions of each individual, recognising that **diversity strengthens our community and makes our Trust a positive place to work and grow**.

We are committed to excellent employment practices that attract and retain talent from a variety of backgrounds and communities.

The aim of our people strategy is to be the **greatest place to work in the South West**.

We know that to realise our ambitious aim we must **welcome, retain and develop our great people** who work day in day out to **transform the lives of the children in our Trust**.



#lifeattedwragg is focussed on ensuring all our employees:

- **Love coming to work** and have a strong sense of belonging
- **Experience high quality development** through our dedicated development curriculums delivered by the Ted Wragg Institute
- **Inspire others** with their open and collaborative approach

To find out more about what it is like to work at the Ted Wragg Trust, explore our development curriculums and hear from our employees please visit our website at [www.tedwraggtrust.co.uk/workwith us](http://www.tedwraggtrust.co.uk/workwithus)





The Ted Wragg Institute

We want to ensure that our people feel **invested** and **fulfilled in their role** by providing personalised, relevant and engaging professional development. Our brand-new **Ted Wragg Institute (TWI)** delivers our **high-quality development** offer for all, across our family of schools.

Our incredible offer includes Trust CDP, Leadership Development, Networks, Cohort-specific training and NPQs. Take a look at our offer this year here.

Early Career Teachers

If you are an Early Career Teacher you will benefit from our tailored Early Career Framework combining weekly instructional coaching, asynchronous independent learning, online 'clinics' and in-person conferences. With a dedicated mentor or coach and access to supportive networks the ECTs in our Trust are supported and developed to reach their full potential.

Our professional development delivery model

Our professional development delivery is underpinned by our Education key concept (see page 8). We believe that professional development should build knowledge, motivate, develop techniques and embed practice.

At the Ted Wragg Trust, we are research informed and believe that it is important that everyone involved in sharing ideas understands the underlying rationale and evidence base. We ensure that professional development is:



Sustained

Frequency is critical, not time span



Practice-Based

Create new habits



Domain-Specific

Create new habits



External Expertise

Challenge the familiar & refresh ideas



Professional Buy-In

Purpose & benefits eclipse volunteering

We believe this slightly adapted model from 'Teaching Walkthrus 2', Tom Sherrington and Oliver Caviglioli is applicable to all professional development and will underpin the delivery of all our professional development networks, seminars and webinars.



Our Ted Wragg Standard



Our Ted Wragg Standard provides a **minimum set of high standards** across all our schools to establish clear structures, implement effective processes and hold each other to account **to enable excellence**. It is based on our three key concepts: Leadership, Education and Every Child Succeeds.

Key Concept: Leadership



We believe that great leadership:



Fiercely educates



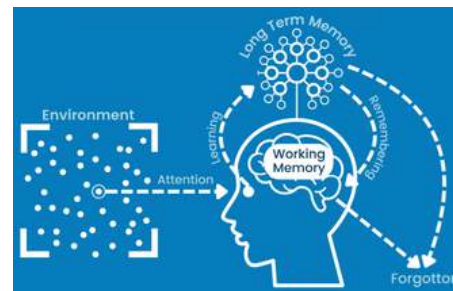
Thrives in a complex system



Is locally enabled

Key Concept: Education

We have a clearly defined and articulated learning model that is understood by all teaching staff. This model of the learning process uses the concepts of Working Memory and Long-Term Memory. It draws on ideas from Cognitive Load Theory and the work of Daniel Willingham.



Key Concept: Every Child Succeeds



We believe individual development is well explained using Maslow; that an individual grows in an ecosystem and can be interpreted using Bronfenbrenner's work, and that we are interdependent.

We believe that to enable our children to live a life of opportunity, we need to understand what true inclusion means. To us, our model is based on Maslow's hierarchy of needs and the Bronfenbrenner's ecology of inclusive education.

Microsystem

Child

- sleep well
- eat breakfast
- follow school rules and routines
- attend school regularly

Family

- healthy sleep patterns
- nutritional diet including breakfast
- Online safety parental controls
- adequate housing
- clean clothing
- Support school policies
- Protect from dangers
- attend medical appointments
- ensure attendance is good

School

- Behaviour, Health and Safety, Accessibility, Safeguarding, Supporting Pupils with Medical Conditions and Anti-Bullying Policy
- Online Safety lessons and workshops for parents/carers
- Early Help support
- First Aid trained staff
- Attendance Engagement Officer and Attendance Policy
- Nutritional lunches and free breakfast
- Foodbank support
- Wrap around care

Mesosystem

- We endeavour to provide a safe and welcoming environment for pupils and their families.
- We listen to our pupils and families and take seriously what they tell us.
- We work in partnership with other agencies such as CAMHS and Early Help

Macrosystem

- Keeping Children Safe in Education
- Teacher Standards
- Devon and Plymouth Children's Social Services
- 0-25 SEND Team
- Virtual School

Our Benefits

A critical part of our People Strategy is to ensure that we welcome and retain our great employees and ensure that they are supported both at home and at work.

When you join our Ted Wragg family we are here for you every step of the way. Here are some of the benefits we offer:

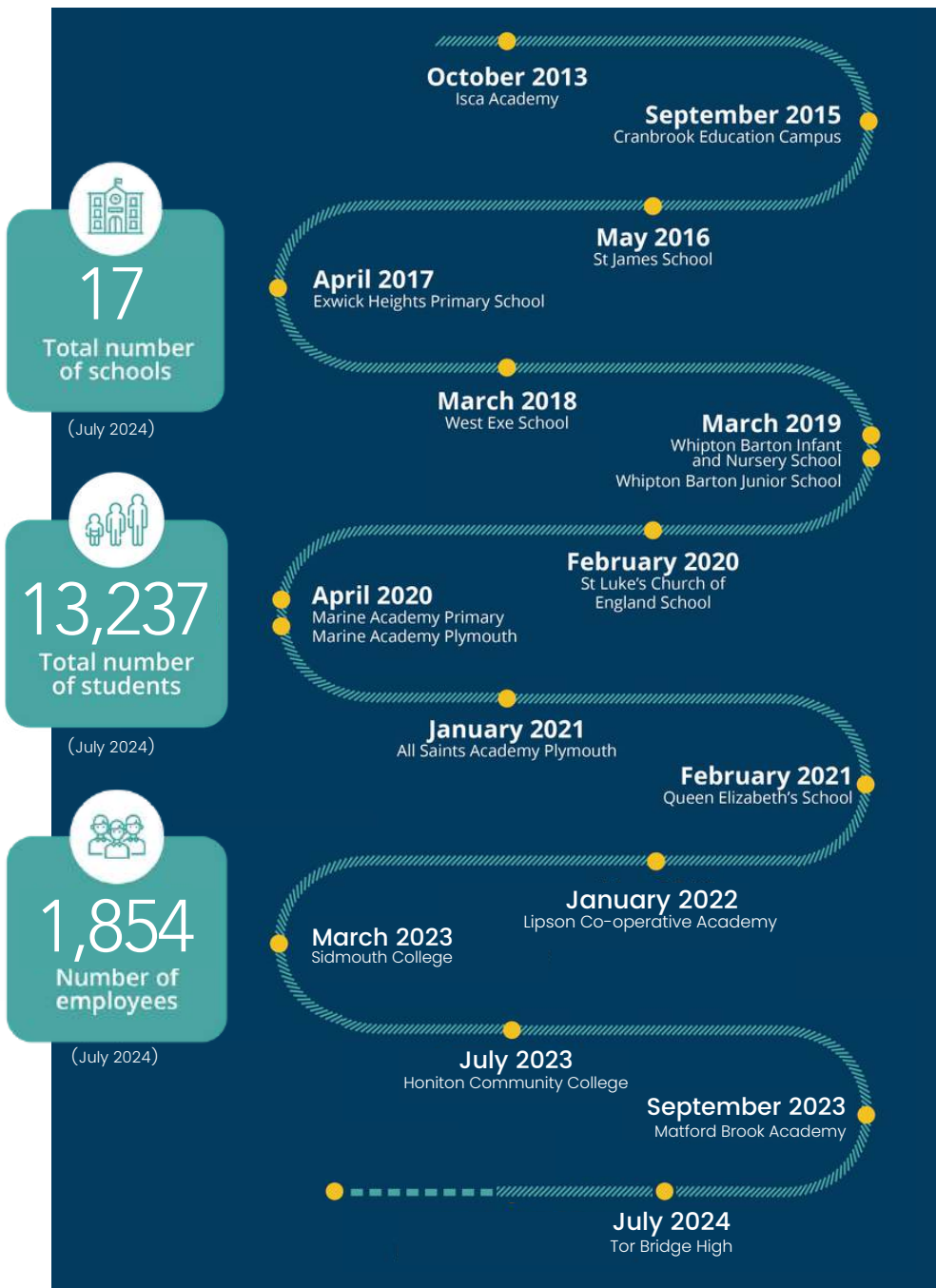
 <p>Exceptional development and networking opportunities</p>	 <p>Cost of blue light cards can be claimed through expenses</p>
 <p>Free annual flu jab, eye test and allowance for glasses</p>	 <p>Exclusive discounts, cashback and vouchers</p>
 <p>Free, confidential employee helpline. Available 24-7 through Health Assured</p>	 <p>Access to Wisdom app to support your mental health</p>
 <p>Up to 10% off all Pure Gyms</p>	 <p>up to the value of £2,000.</p>
 <p>Up to 2 days paid emergency time off for dependants</p>	 <p>Generous public sector pension schemes for all staff</p>
 <p>Timetabled instructional coaching for all teachers</p>	 <p>Family friendly policies and flexible working opportunities</p>



Our Trust Journey



Professor Ted Wragg, in whose memory the Ted Wragg Trust is named, was passionate about how education can transform young people's futures.



Thank you for your interest in
working with us.

We look forward to receiving
your application.

