



AVANTI COURT

PRIMARY SCHOOL

Principal Candidate pack

Contents

	Page
Letter of welcome	3
Information about the MAT and the school	6
Our commitment to parents, carers and students	8
Main responsibilities	12
Personal specification	14
Application process	15



Welcome



Letter of Welcome from Mike Younger, Chair of Avanti Schools Trust Board of Trustees

Dear Candidate,

Thank you for your interest in the position of Principal at Avanti Court Primary School. This is a hugely exciting time for our family of schools. We are presented with a rare opportunity to make a real difference to the lives and life chances of so many pupils.

Recently inspected by Ofsted, Avanti Court Primary School is a good school with several outstanding features. It is a three-form entry school that caters for children aged 3–11 with an attached nursery with over 600 children on roll. It is a special place to learn; with a balance between developing pupils academically and spiritually. We are exceptionally proud of our school and our pupils. It is a school where everybody is made to feel welcome due to its nurturing and inclusive environment. The school follows the National Curriculum; enriched with educational visits, yoga and meditation, a unique philosophy and ethics course and Sanskrit.

When I visit our schools, I see proud staff, engaged students and a community that knows we will do all that we can to secure the very best outcomes for the children within our care. These attributes are certainly not unique across the sector, but the relentless commitment and high expectations staff in Avanti's schools hold for our young people is truly remarkable.

As a Trust, we are clear about the importance of achieving long term sustainability for our schools. Our vision is to enable individual schools to flourish with real autonomy, whilst also ensuring a strong ethos of support and collaboration across our schools. Employees within Avanti belong to a community of professionals, and benefit from a wide range of networks and development opportunities across the Trust. The Trust provides a strong culture of collaboration and support, together with high expectations for staff and pupils alike. Those we recruit can demonstrate that they share our values, are highly motivated to work with colleagues to continuously develop their skills, pursue professional excellence and are committed to providing the highest standards.

I hope you are as excited by this proposition as we are and if so, we look forward to meeting you.

Mike Younger

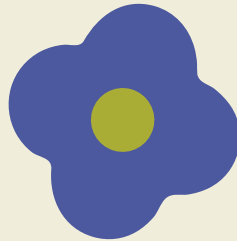


Core principles



We have incredible potential and can achieve this when nurturing all parts of ourselves – intellectual, emotional, physical and spiritual.

1



We choose how we wish to respond to life and what we nurture within.

2



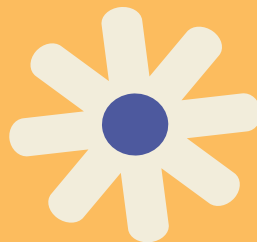
We care for and respect all life – human, animal and plant – and live in a way that causes the least possible harm.

3



We each observe the one same reality from our own unique perspective and engage in open-minded dialogue to deeply enrich our vision.

4



We serve a higher purpose by living a meaningful and satisfying life of contribution.

5



We are nourished by personal relationships that fulfil our need to love and be loved, encouraging us to be the best we can be.

6

The three pillars

Our school prepares students for their respective life-journeys by promoting educational excellence, character formation and spiritual insight.



Educational excellence

Our vision for educational excellence is one where deeply inspired teachers nurture joyful students and nourish their innate passion for learning. Learning is a quest to discover each student's unique gifts and potential and lay the foundation for their lifelong journey of learning. This is inseparable from high academic standards, where a challenging holistic curriculum cultivates independently thoughtful and reflective students by working towards a sense of mastery, emphasising depth, and not just breadth.



Character formation

Our vision for character formation is one where virtues are taught by example and a supportive community of learners fosters a powerful sense of individual and collective purpose. Learning develops for these conscious changemakers as a quest for making the world a better place, starting with oneself. The capacity to internalise and put into practice what we have learned is the true test of learning. Building this capacity demands an experiential, virtues-led curriculum that embraces collaboration, custodianship and global perspectives.



Spiritual insight

Our vision for spiritual insight is one where our interconnectedness with all living beings and with the universe, urges acts born out of humility and love, and the Self is perceived beyond its layers of coverings. Learning blossoms for these seekers as a quest for self-discovery and opens the door to their unlimited potential; an antidote to the emptiness of a materialistic or mechanistic worldview. The curriculum unveils the possibilities of sacredness and transcendence at every moment and so engenders a deeply positive attitude to life, enduring happiness and heartfelt relationships.

Information about the MAT and school

5000
STUDENTS

The Avanti Schools Trust

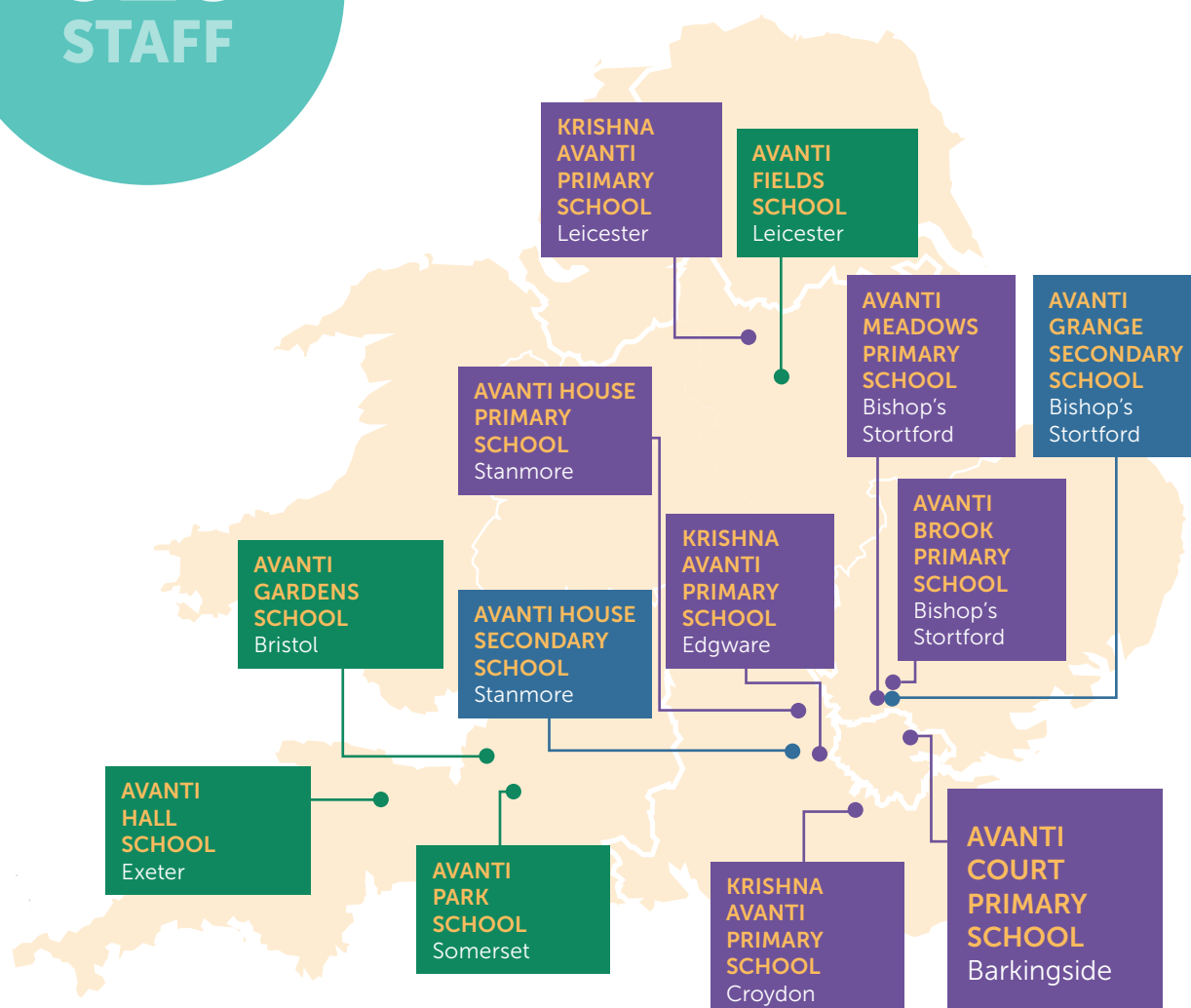
Avanti Schools Trust (AST) is a successful and growing multi-academy trust (MAT) with a track record of delivering strong outcomes for children. To date, all of our academies that have been inspected by Ofsted have been rated good, some with outstanding features. The majority of our schools are over-subscribed and we have a strong track record of delivering projects on-time and within budget.

The MAT currently operates three learning hubs – one in London, one in the Midlands and one in the South West.

610
STAFF

Avanti Court Primary School

Avanti Court is a Hindu faith-designated 3 to 11 primary school and part of Avanti Schools Trust. The school has three-forms of entry and with an attached nursery. There are currently over 600 pupils on roll. The school has recently (June 2022) been inspected by Ofsted and the pleasing report will be published soon.



CURRENT SCHOOL INFORMATION

School	LA	Date joined Trust/opening	Age range	Ofsted grade
Krishna Avanti, Harrow	Harrow	2008	3-11	Good
Krishna Avanti, Leicester	Leicester	2011	4-11	Good
Avanti Court	Redbridge	2011	3-11	Good
Avanti House Primary	Harrow	2012	4-11	Good
Avanti House Secondary	Harrow	2012	11-18	Good
Krishna Avanti, Croydon	Croydon	2016	4-11	Good
Avanti Fields	Leicester	2018	4-16	N/A
Avanti Park	Somerset	2019	4-14	N/A
Avanti Gardens	Bristol	2019	4-11	N/A
Avanti Hall	Devon	2019	4-16	N/A
Avanti Meadows	Hertfordshire	2021	4-11	N/A
Avanti Grange	Hertfordshire	2022	11-18	N/A
Avanti Brook	Hertfordshire	2023	4-11	N/A

Pupils' outcomes

Our schools are amongst some of the highest performing in the country. For example, in 2019 many of our primary schools were ranked amongst the highest performing schools in the country – see link below. The progress made by pupils at Avanti Court is very encouraging, in 2019 the progress scores at KS 2 were as follows:

Progress score in reading, writing and maths

Reading	Writing	Maths
Average 1.3	Well above average 3.3	Well above average 3.7

For more details about outcomes in Avanti's schools please [click here](#).

Our commitment to parents, carers and students

We want to involve you as parents and carers fully in your child's education. By working closely with you we can ensure that each stage of your child's journey is stimulating, positive and enriching.

We will provide:

- The very best teaching in every subject and every classroom;
- A rigorous curriculum that challenges and stretches every student to be the best that they can be;
- A regular and robust assessment and reporting system that clearly informs you about your child's progress;
- An enrichment programme that includes academic, sport and music related activities;
- A wide range of local, national and international educational visits;
- Clear and precise feedback that enables every student to master key skills and build their understanding;
- Opportunities to contribute to the life of the school and develop their leadership skills;
- A safe learning environment in which your child can flourish and be happy





10 elements of great learning and teaching in Avanti Trust Schools

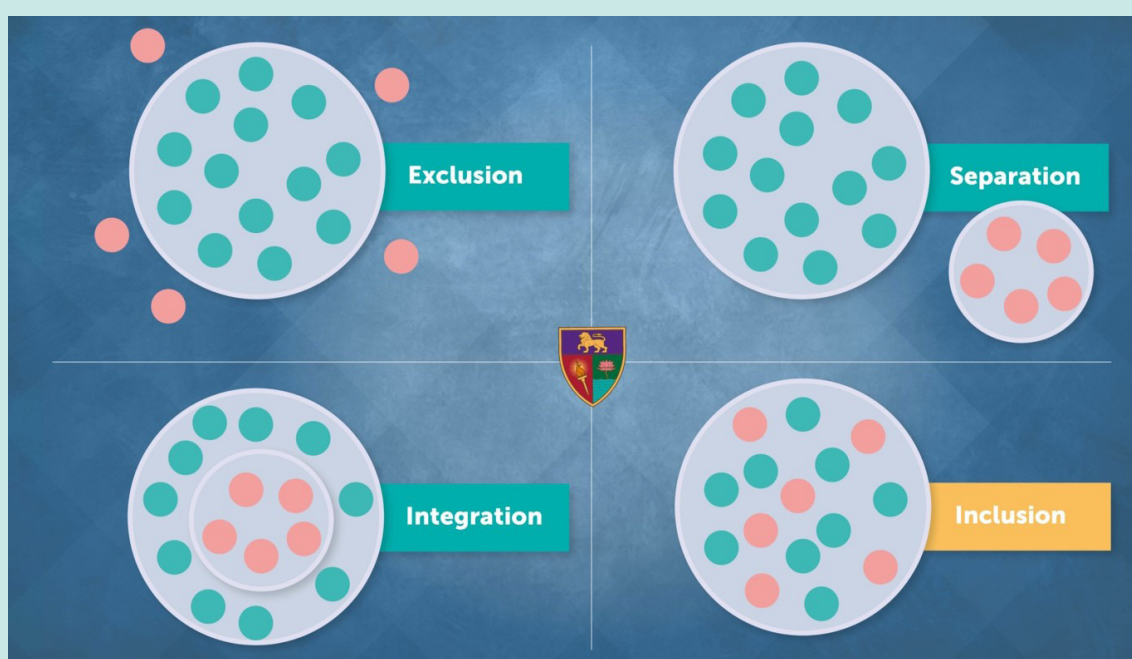
Through a planned programme of training and development supported by The Avanti Institute we will ensure that all Avanti Trust Schools have a highly developed sense of what constitutes great teaching. We will continuously train and coach our staff on every feature of high quality pedagogy, in order that every student gets an education that is second to none.

We will ensure that all our teachers:

1. Provide explanations and instructions are clear and concise
2. Check every student's understanding before moving on to new topics
3. Model excellence through effective scaffolding of ideas and concepts
4. Ensure that the needs of every student are understood, planned for and met
5. Continuously engage and intellectually challenge students in their class
6. Plan activities that will enable students to demonstrate understanding and master skills
7. Manage students behaviour in a measured and proportionate manner
8. Help students recall and apply prior learning to new contexts
9. Make clear to students how their learning will be assessed
10. Provide precise feedback that helps students re-draft and improve their work

Avanti's approach to inclusion

The ethos of our schools - driven by our values and adopted by all staff – will be inclusive. We place a strong value on both academic achievement and personal development, believing that pupils should achieve their full potential, learning alongside their peers within a nurturing environment. We believe that the entitlement to an inclusive, broad, balanced, relevant, and differentiated curriculum is a right for all and should not be constrained by age, gender, creed, race, physical disability, special education need or vulnerability. This entitlement should be delivered by trained personnel, committed to maximum inclusion, who are able to provide a happy, sensitive, secure, and developmental environment, in which all individuals are encouraged and enabled to undertake self-development, self-advocacy, respect for self, respect for others and respect for the environment.



Main responsibilities of the role of Principal

School culture;

- Establish and sustain the school's ethos and strategic direction in partnership with Avanti Schools Trust and in line with the core principles and values as outlined in The Avanti Way
- Create a culture where pupils experience a positive and enriching school life
- Uphold ambitious educational standards which prepare pupils from all backgrounds for their next phase of education and life
- Promote positive and respectful relationships across the school community and a safe, orderly and inclusive environment
- Ensure a culture of high staff professionalism.

Teaching;

- Establish and sustain high-quality, expert teaching across all subjects and phases, built on an evidence-informed understanding of effective teaching and how students learn
- Ensure teaching is underpinned by high levels of subject expertise and approaches which respect the distinct nature of subject disciplines or specialist domains
- Ensure effective use is made of formative assessment.

Curriculum and assessment;

- Make use of effective and proportional processes of evaluation to identify and analyse complex or persistent problems and barriers which limit school effectiveness, and identify priority areas for improvement
- Develop appropriate evidence-informed strategies for improvement as part of well-targeted plans which are realistic, timely, appropriately sequenced and suited to the school's context
- Ensure careful and effective implementation of improvement strategies, which lead to sustained school improvement over time.



Working in partnership;

- Forge constructive relationships beyond the school, working in partnership with parents, carers and the local community
- Commit their school to work successfully with other schools within and outside of the MAT and other organisations in a climate of mutual challenge and support
- Establish and maintain working relationships with fellow professionals and colleagues across other public services to improve educational outcomes for all students.

Governance and accountability;

- Understand and welcome the role of effective governance, upholding their obligation to give account and accept responsibility
- Establish and sustain professional working relationship with the SSC
- Ensure that staff know and understand their professional responsibilities and are held to account
- Ensure the school effectively and efficiently operates within the required regulatory frameworks and meets all statutory duties.



Person Specification

Professional qualifications	Essential E/ desirable D	Application form
Qualified teaching status	E	✓
Higher degree	D	✓
Evidence of commitment to CPD	E	✓
NPQH	D	✓

Experience	Essential E/ desirable D	Application form	Interview or reference
Knowledge of up-to-date pedagogy and research	E	✓	✓
Creative thinking, problem-solving and identifying opportunities	E	✓	✓
Knowledge of strategic financial planning, risk and budgetary management	E	✓	✓
Strong analytical and decision-making skills	E	✓	✓
Ability to implement effective school self-evaluation and development planning.	E	✓	✓
Experience of safeguarding and well-being for pupils and staff	E	✓	✓

Personal attributes	Essential E/ desirable D	Application form	Interview or reference
Inspirational leader and manager with excellent interpersonal and communication skills	E	✓	✓
Self-motivated and proactive	E	✓	✓
Resilient and self-motivated	E	✓	✓
Approachable and empathetic	E	✓	✓



Application process

The closing date for applications is midnight on Sunday 18 September 2022.

Interviews are scheduled for Tuesday 27 September and Wednesday 28 September 2022 at the school.

If you would like to find out more about this exciting opportunity and the role, please contact Mike Ion, our Education Director via mike.ion@avanti.org.uk.



AVANTI
INSTITUTE

The continuing development of the Avanti's employees beyond their induction and initial training is an area of crucial importance for the MAT. The Avanti Institute for Professional Learning is part of an overall workforce development strategy that views CPD as an ongoing, planned learning and development process that contributes to work-based and personal development. The scope of the Avanti Institute covers all settings, institutions and teams and includes - but is more than - training, development and professional qualifications.



Avanti Court Primary School

Carlton Drive, Barkingside, Essex IG6 1LZ

Phone 020 8551 9489

Email avanticourt@avanti.org.uk

Website avanti.org.uk/avanticourt/



AVANTI COURT

Excellence · Virtue · Devotion

Avanti Court Primary School is part of the Avanti Schools Trust.

Avanti Schools Trust is a charitable company limited by guarantee registered in England & Wales.

Registered No: 07506598 • Registered Office: Avanti Schools Trust, Wemborough Road, Stanmore, Middlesex, England, HA7 2EQ.