



**THE CONSORTIUM**  
ACADEMY TRUST

---

Shaping Positive Futures



[www.consortiumtrust.co.uk](http://www.consortiumtrust.co.uk)



# Message from the Chief Executive Officer

## Thank you for your interest in working for the Trust.

Here at The Consortium Academy Trust, we are ambitious about the future - creating learning environments and excellence in teaching and learning that provide our children and young people with the best chance at a successful future. Coupled with this is the commitment, care and investment in our people who we believe are our greatest asset.

Our vision is Shaping Positive Futures as we strongly believe our sole purpose is supporting children and young people to achieve their ambitions. This vision gives us a shared sense of purpose and direction and is something we are all proud to be a part of.

Across our community of nine schools our people are doing remarkable things by being fully engaged in work that transforms lives, supporting children and young people to grow in confidence and develop into citizens we are proud of.

Our community of leaders, teachers and support staff work collaboratively to tackle some of society's most critical challenges.

Our values – **aspiration, respect, integrity and responsibility** – harness our belief that it is not just what we do, but how we do it that makes a difference. These values reflect who we are and how we work to create a culture for success, as we continue to evolve to ensure that we meet the needs of our children and young people, colleagues and partners both now and in the future.

With a strong focus on performance and delivering high standards in all that we do, we are looking for inspirational leaders who want to make a difference to drive forward our ambitions – leaders who will work collaboratively with colleagues, children and young people and partners to ensure each child and young person is able to excel and achieve their ambitions.

This is a great time to join the Trust as we progress at pace in our next stage of development.

We very much look forward to receiving your application for what will be a stimulating, challenging and professionally fulfilling role. Please do not hesitate to let us know if you require more information.

Yours sincerely,

**Lizann Lawson**, Chief Executive Officer

# The Consortium Academy Trust – **a place to transform lives**



**9**

Number of  
schools

**8000**

Children and young  
people aged 3 to 18

**40**  
Million

Total operating  
income

**1100**

Current  
staffing

**The Consortium Academy Trust  
combines six secondary schools and  
three primary schools, two of which  
form an all-through school.**

The Trust supports almost 8,000 children and young people aged 3 to 18 and has a total operating income of in excess of £40 million. The current staffing base consists of almost 1,100 staff. Together, Headteachers, the Central Team and the Board of Trustees work to ensure an excellent education and learning experience is provided for each and every child and young person.

## Our Vision:

Shaping Positive Futures

## Our Mission:

We put our children and young people first. We have a supportive, yet challenging environment to allow everyone in our Trust community to:

- flourish and believe that they have every chance of success.
- work together so that they can achieve more than can be done individually.
- work within a supportive culture where taking appropriate risk is seen as a strength.
- be proud of themselves, their peers, our schools, and our local communities.

## Our Strategic Priorities:



**THE CONSORTIUM**  
ACADEMY TRUST

Shaping Positive Futures

## Our Values:

### Aspiration

We are ambitious, we aim high for ourselves and for others and we believe that we can make a real difference.

### Respect

We respect ourselves and each other. We respect our diverse environment and community.

### Integrity

We are honest with ourselves and each other. We do things for the right reasons.

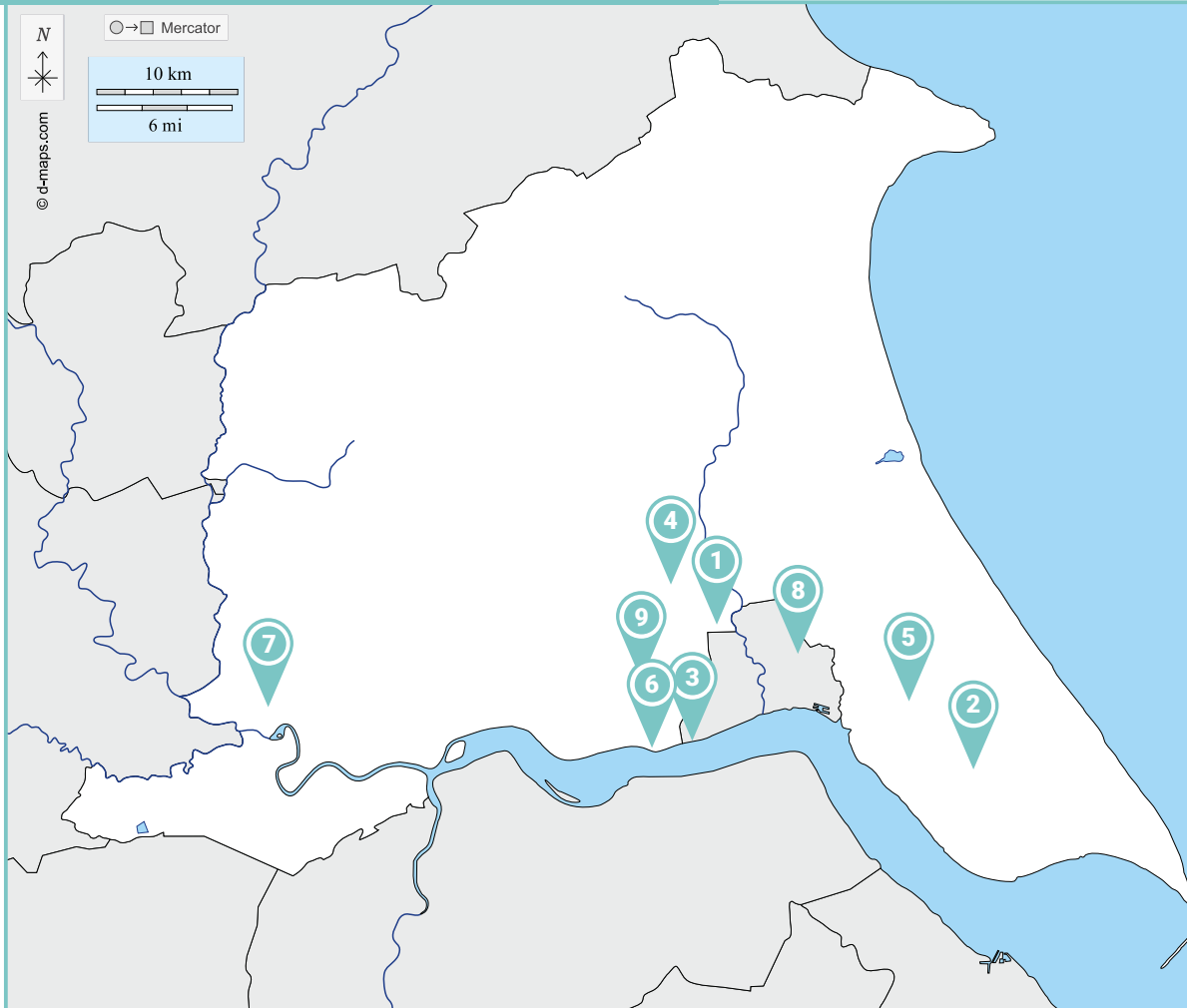
### Responsibility

We take responsibility for everything we do and see mistakes as an opportunity to improve and to get things right next time.

# Our schools are located across Hull and the East Riding.

This geographical spread creates accessible opportunities for staff across the Trust to share expertise, practice and resources.

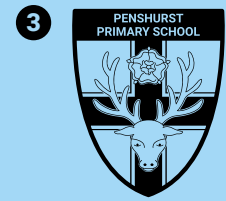
There is a critical agenda in raising the aspirations and attainment levels of children and young people across Yorkshire and the Humber, and the concentration of contribution our Trust provides, in providing children and young people with an excellent education and learning, is integral to achieving this agenda.



1



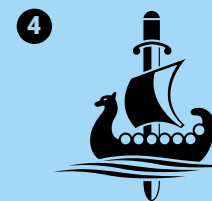
2



3

KEYINGHAM  
PRIMARY

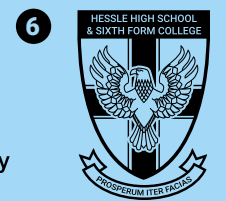
Part of the  
Hessle Academy



4



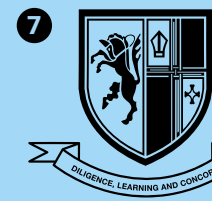
5



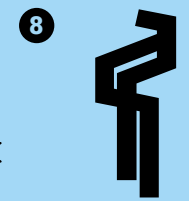
6

Holderness Academy  
& Sixth Form College

Part of the  
Hessle Academy



7



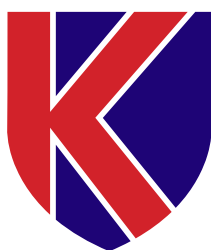
8



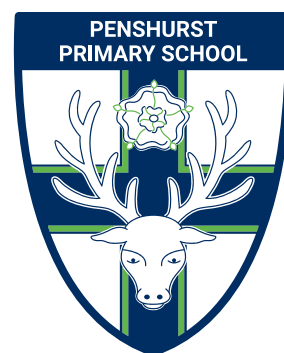
9

Learn and discover more about our schools through their website.

### Primary Schools



KEYINGHAM  
PRIMARY



*Part of the Hessle Academy*

### Secondary Schools



Holderness Academy  
& Sixth Form College



*Part of the Hessle Academy*



# Working and learning at the Trust

Our Trust community is rich in knowledge. The diverse, inclusive and aspirant nature of it fosters a desire to learn and develop.

In considering whether you wish to be part of our community, it is important you hear from our members.



*Being part of TCAT has provided our school with a vital network of support and guidance as we have navigated all that we have faced this year together.*



- Deputy Headteacher



*I know the decision I made to join TCAT was the right one for me and hopefully for everyone I work with!*

*- Payroll Manager*



*In a culture of positive and constructive feedback, I have welcomed observations from all colleagues and used them to refine my pedagogy.*

*- ECT*



*The Trust ensure that, as a Head, there is always a network of people who you can turn to for advice and guidance, including other Heads and the central services team.*

*- Headteacher*



## **Listen to our learners talk about what makes a good teacher.**

As we know, teachers are at the heart of ensuring the needs of our children and young people are met. The Directors of Improvement and Standards will invest their time in teacher development so our learners experience great teaching and learning.

**Click [HERE](#) to watch**







The Wider

# Leadership Team



*Our 'one organisation' culture is taking shape due to inclusive leadership approaches and collaboration across the central services, school improvement and school leadership teams.*



**It is an exciting time to join the Trust; with the integration of a number of key appointments to strengthen our strategic people approaches, school improvement offer and strategic governance, the Trust continues to move from strength to strength.**

Our 'one organisation' culture is taking shape due to inclusive leadership approaches and collaboration across the central

services, school improvement and school leadership teams.

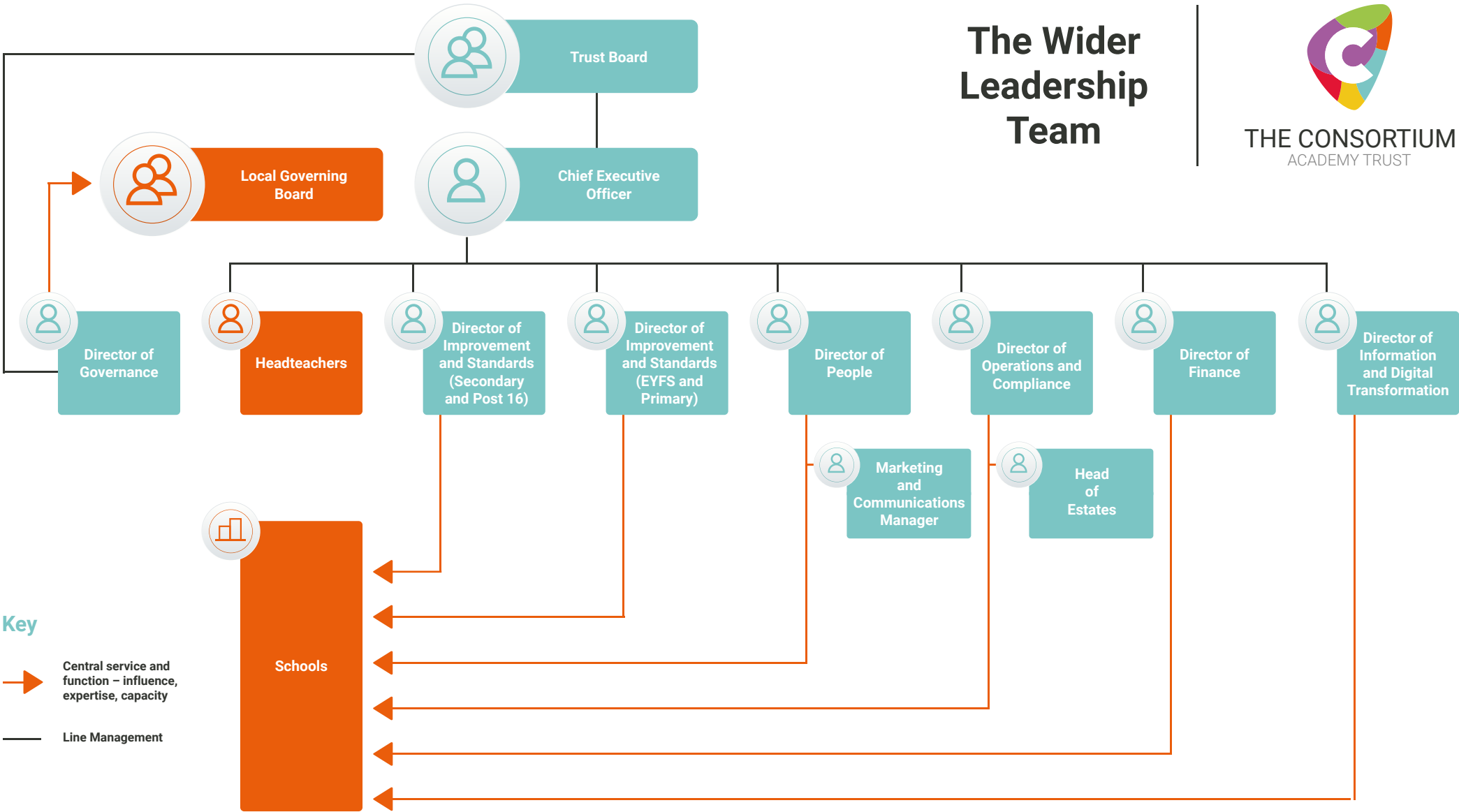
We are keen to ensure our central services and school improvement functions are of the highest quality, meeting the needs of each of our schools. This team-based approach to service delivery is central to our desire to be innovative, agile and process light to ensure our time is spent on the most impactful activities.

We expect our wider leadership team to be visible and approachable and to manage in a transparent and confident way. The Trust is a people-based business where communication and active staff management is key to success.

# The Wider Leadership Team



THE CONSORTIUM  
ACADEMY TRUST





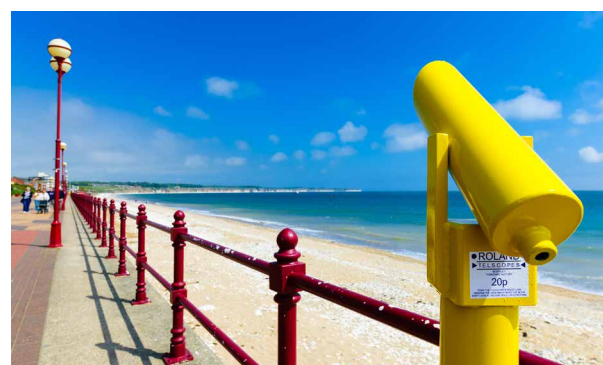
# Your life in East Yorkshire

**Renowned for its rural and coastal character, making it the ideal place to live if you crave the outdoors, East Yorkshire is a ceremonial county blessed with dramatic coastline and rolling chalk hills.**

Although predominantly rural, it's becoming increasingly known as a hotspot for culture. Hull was named as the UK's City of Culture 2017.

East Yorkshire has a strong rural and seaside character. Its coastline has several golden-sand beaches and traditional seaside towns with piers, promenades and fish and chip shops. Towns tend to be small and traditional with period architecture, often with plenty of boutiques, cafés and historical coaching inns. Hull's Old Town also still has its cobbled streets, but redevelopment has filled the rest of the city with new apartment blocks, museums and restaurants.

Beyond the towns is rolling countryside marked by long-distance walking and cycling routes. Locals can also visit the Yorkshire Nature Triangle, the go-to location for spotting wildlife.



Find out more about the region at:  
[www.marketinghumber.com/region](http://www.marketinghumber.com/region)



**The Consortium Academy Trust**  
Harland Way  
Cottingham  
East Riding of Yorkshire  
HU16 5PX

Tel: (01482) 469838  
[enquiries@consortiumtrust.co.uk](mailto:enquiries@consortiumtrust.co.uk)

 [@ConsortiumTrust](https://twitter.com/ConsortiumTrust)



**THE CONSORTIUM**  
ACADEMY TRUST

Shaping Positive Futures