



ANGLIAN LEARNING



**Sports Coach and
Learning Coach**



Candidate Information Pack





Contents

Page 3	Welcome from Chief Executive Officer
Page 4	Anglian Learning, a unique multi academy trust
Page 5	Job advertisement
Page 7	Job description
Page 8	Person specification

Welcome from the Chief Executive Officer

Thank you for your interest in the position of Sports Coach and Learning Mentor at The Meadow Primary School and Wimbish Primary Academy, part of Anglian Learning.

We are an ambitious, outward looking school trust consisting of seven secondary schools and eleven primary schools, the latest to join our community being Stour Valley Community School and Clare Community Primary School in March 2025. While each of our academies retains very clearly their own identity and ethos, we are collectively passionate in our belief that all young people deserve to have access to an outstanding education, and which crucially enables them to thrive in the local, national, and global communities in which they live.

Anglian Learning has been founded on strong collaborative and trusting relationships, where everybody is committed to sharing their successes, but equally open to innovative ideas and alternative perspectives. We also passionately believe that our most valuable resource is our people, and if you apply and are successful in your application, we promise to develop and support you in your career, as well as providing a caring, friendly environment in which to work.

For an informal discussion regarding this role, please contact Nichola Pickford, npickford@anglianlearning.org

I hope that you find the following information useful. If you wish to make an application for this vacancy, please see contact information within.

We look forward to hearing from you.

Yours sincerely



Jonathan Culpin
Chief Executive Officer

Anglian Learning, a unique multi academy trust

Our mission is to build an innovative partnership of academies that excites, inspires, and empowers our people – pupils, staff, and the community in which we work - to be the absolute best they can be, to have the confidence to think creatively, and embrace new challenges. Through this we will seek to support and inspire our young people to be dynamic learners who will live, grow, and thrive in the local, national, and global community in which they live and will work.

Currently, the Trust educates more than 9000 pupils and employs over 1200 members of staff in 18 schools across three counties, with a 19th school due to open in the near future. Several of our schools provide adult education opportunities, reflecting our commitment to lifelong learning and we also operate our own sport centres, under the banner of Anglian Leisure.

We are recent winners of the NGA Outstanding Governance Award; have a unique partnership with Arts Council England, reflecting our commitment to arts education; and are one of the eight National Creativity Collaborative pilot hubs. We are strategic partners in the local teaching school hub, working closely with other trusts to provide professional qualifications in addition to our own very extensive professional learning programmes.

We provide school improvement support to our schools, alongside finance, human resources, ICT, and estates support. Many of our leaders, teachers, and professional services staff are involved in networks across the Trust to share best practice and build skills and knowledge, with some taking on cross-trust leadership positions.

Our most recent staff survey indicated that a high proportion of staff:

- ✓ Feel as though they belong within Anglian Learning
- ✓ Agree that they are provided with relevant opportunities for professional development
- ✓ Feel that there is a positive culture of psychological safety within their school
- ✓ Have high levels of job satisfaction and happiness at work
- ✓ Would recommend our organisation as a great place to work
- ✓ Almost all staff who responded to the survey feel part a team within their school and can rely on colleagues for support when needed.

Our four core values and principles guide our work to achieve our vision:



Aspiration

We are ambitious for ourselves and all those in our community to be the best we can be



Community

We underpin our relationships with a culture of support, respect and trust, recognising we are stronger together



Empowerment

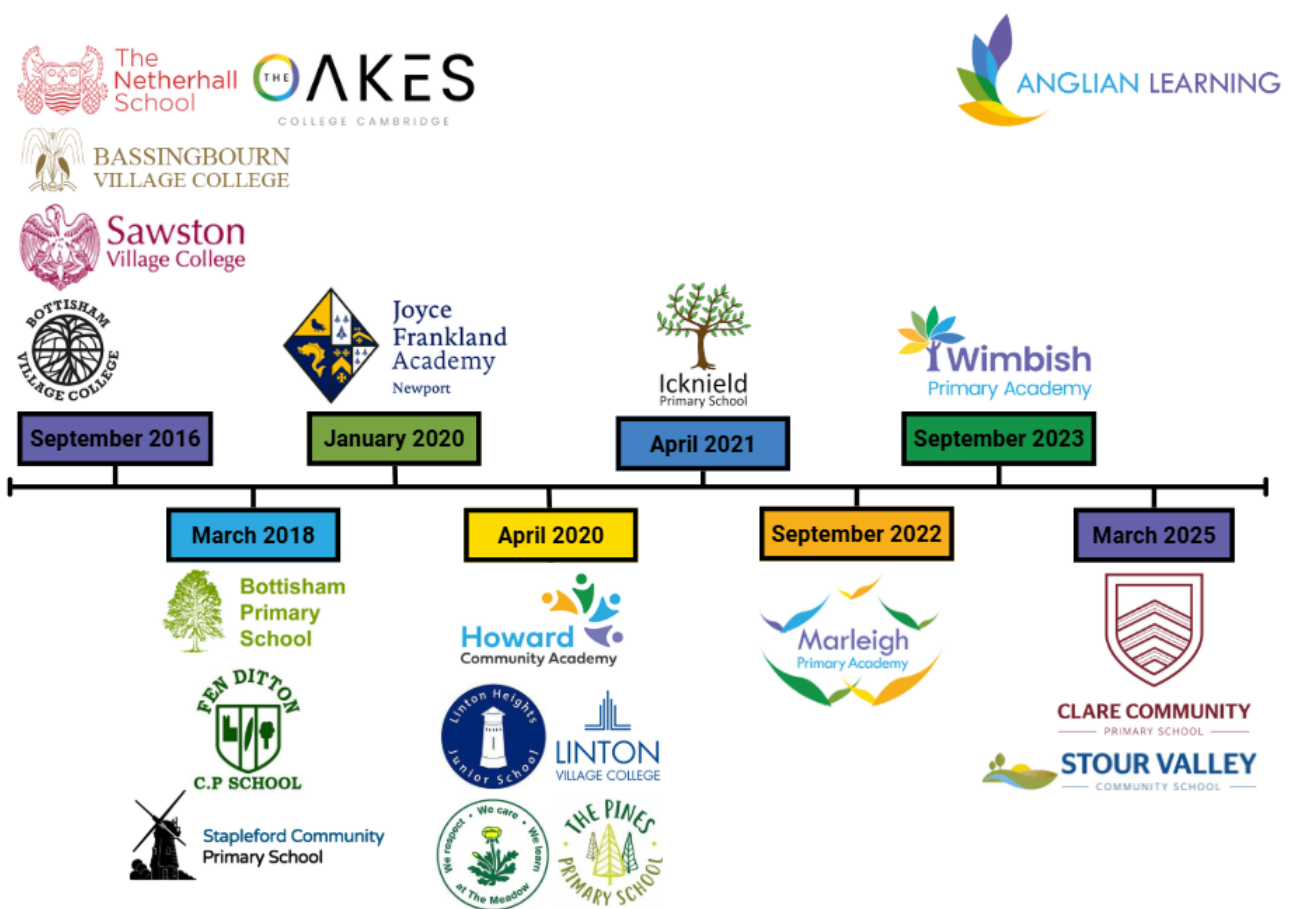
We enable our academies, staff and learners to embrace new ideas and think creatively



Inclusivity

We believe in equality of opportunity, celebrating everyone's differences and supporting learners of all abilities from all backgrounds

It is an exciting time to join our growing community of schools.



We aim to achieve this by raising the educational attainment of all our young people and using the collective energy and cross-school educational fertilisation within the Trust to improve life chances by:

- Developing a dynamic and inspirational culture for teaching and learning excellence.
- Providing pupils with stimulating and valuable enrichment opportunities across the curriculum.
- Building a curriculum and assessment structure that will enable teachers, pupils, and parents to celebrate success and respond swiftly to challenge.
- Encouraging innovation and risk-taking through a focus on research and best practice locally, nationally, and internationally.
- Promoting, enabling, and supporting leadership at all levels to flourish in individual schools and across the Trust.
- Providing high quality professional learning opportunities for staff at all levels in the Trust



SPORTS AND LEARNING COACH

January 2026 start date



Hours: 36 hours per week, term time only (ranging from 8.15-4.15 dependent on the day with a 30 minute, unpaid lunchbreak)

Contract Type: Permanent, term time only: 38 weeks a year

Salary: Scale 5 point 12-14 £28,598 - £29,564 FTE (the salary will be pro rata)

Location: Wimbish Primary Academy and The Meadow Primary School, but the successful candidate may be expected to travel between sites for training or meetings.

The Role

This is an exciting role for a sports coach and learning coach to work at both The Meadow Primary School (4 days a week) and Wimbish Primary Academy (1 day a week). We are seeking a dedicated and experienced sports coach or HLTA to oversee the development and implementation of PE and extra-curricular sports provision across both schools. This person should have a relevant qualification, experience of planning and teaching PE across all age ranges in a Primary School and running extra-curricular activities.

The role will involve running some breakfast clubs, PE provision from Reception to Year 6, supporting with delivering interventions, lunchtime and after school clubs, organising and supporting sporting fixtures, delivering forest school and. There will also be an element of supporting children's learning in non-sports based classroom activities.

We are looking for someone who is willing to work across both sites (4 days at Meadow and 1 day at Wimbish).

In return, we can offer an opportunity to work and develop within an innovative and collaborative multi academy trust. You will be joining a positive and collaborative team where staff work across both schools to ensure the highest of curriculum planning and delivery.

Full training and induction will be provided alongside other benefits such as free Anglian learning Sports Centre membership, Employee Assistance Programme and many more.

For full details of the role, please see the job description. Interested applicants are most welcome to arrange a telephone conversation or a visit to the school. If you would like further information about the role, please contact Nichola Pickford npickford@anglianlearning.org.

To apply for this vacancy please complete the application process via https://ce0976li.webitrent.com/ce0976li_webrecruitment/wrd/run/ETREC179GF.open?WVID=6122900071 outlining how your skills and experience will enable you to be successful in this role.

Please note that CVs will not be accepted.

If for any reason you need to apply via an alternative accessible format, please do contact us on hr@anglianlearning.org

Closing date: 12 noon – Thursday 20th November

Interviews: between 24th and 28th November

Start date: January 2026

We encourage early applications as we do reserve the right to close the application window ahead of schedule and to conduct interviews earlier than the closing date stated.

Anglian Learning is committed to safeguarding and promoting the welfare of young people and vulnerable adults. We expect all staff to share this commitment and those in regulated activity will be subject to an Enhanced DBS Check and online checks. Certificate of Good Conduct and other applicable checks may be requested.

This post is exempt from the Rehabilitation of Offenders Act. Our policies for Ex-Offenders, GDPR, Safeguarding and Recruitment can be found on our website: www.anglianlearning.org

We value diversity and welcome applications from all, including those with protected characteristics under the Equality Act. Flexible working will be considered for all roles deemed suitable.

As a result of the changes to the UK immigration rules which came into effect on 1 January 2021, Anglian Learning will offer sponsorship for a skilled worker visa under the points-based system, where a role has been deemed to be business critical'. Do contact us to discuss further.

Please note the photo(s) of pupils attached to this notice were used under the legal ground of consent, for the purpose of preparing publications that promote the school

JOB DESCRIPTION

POST TITLE:	Sports and Learning Coach
GRADE:	12-14
HOURS OF WORK:	36 hours per week for 38 weeks (salary pro rata)
RESPONSIBLE TO:	Executive Headteacher

JOB PURPOSE

Responsible for co-ordination and development of school sports activities including sports clubs and local community links across Wimbish and Meadow. To lead, plan and deliver high quality PE and school sports including PE lessons, interventions, sports clubs for primary school pupils and to monitor the PE premium spending. To ensure that the sports provision is aligned to and compliments the primary schools' curriculum and progression documents, enhancing school physical education programmes and activities. The role will also include an element of learning coach, supporting pupils in non sports based activities.

PRINCIPAL ACCOUNTABILITIES

- To lead PE across the schools (with the support of experienced colleagues where necessary).
- In liaison with the Executive Head Teacher and any delegated staff, design and implement a broad, balanced, and inclusive sports curriculum for all pupils.
- To monitor and support overall progress and development of pupils and therefore contribute to raising standards of student attainment within sport.
- To facilitate and encourage a learning experience which provides pupils with the opportunity to achieve their individual potential.
- To coach pupils according to their educational needs.
- To assess, record and report on the attendance, progress, development and attainment of pupils with sport and to keep and provide records as required.
- To prepare and, in liaison with the Executive Head Teacher, update PE materials.
- To coordinate and deliver both in and out of school club sports provision.
- To communicate effectively with parents/carers/guardians as well as external agencies where appropriate and to follow agreed communication procedures.
- To support school sports fixtures
- To support pupils with non sports based learning as required.
- To plan, deliver and assess PE lessons
- To run interventions
- To support with Forest School

School liaison:

- Work effectively with school staff and relevant partners.
- Support the sharing of good practice across Wimbish and Meadow and other Trust Schools
- Develop and implement a programme of events and competitions.
- Make effective use of resources and facilities across the family of schools.

Out of school hours learning:

- Devise and manage opportunities for pupils to engage in out of school sports programmes – after school clubs.
- Enable pupils to take greater responsibility as appropriate in planning, organising and running sports out of school learning programmes.

Coaching and leadership:

- To develop, deploy and support our pupils as young coaches and sports leaders within our schools
- Identify and utilise resources, tools and partners to support the development and deployment of young sports leaders.

Raising standards:

- Develop and implement a school sports programme across the primary schools that is inclusive of all young people.
- Work with school leaders to monitor and evaluate the impact of PE and school sport in raising whole school standards.
- Support learners in other areas of the curriculum

The duties and responsibilities in this job description are not restrictive and the post-holder may be required to undertake any other duties that may be required from time-to-time. Any such duties should not, however, substantially change the general character of the post.

Sports and Learning Coach - Person Specification

Attribute	Essential	Desirable
Education and Qualifications	<ul style="list-style-type: none">• Sports based qualifications or• Other relevant and transferrable qualification such as HLTA	<ul style="list-style-type: none">• Educated to GCSE standard C or above
Experience	<ul style="list-style-type: none">• Working with pupils of Primary School Age• Experience of teaching a range of sports• Experience of liaising with school staff• Experience of running sports clubs	<ul style="list-style-type: none">• Experience of delivering forest school• Experience of teaching swimming• Experience of managing a budget• Experience of delivering training to peers
Skills, Knowledge and Aptitudes	<ul style="list-style-type: none">• Good written and spoken English• Attention to detail and accuracy• Able to work collaboratively with others• Excellent organisational skills• Excellent communication and interpersonal skills when dealing with staff, parents and students• Ability to prioritise workload and experience of meeting deadlines• Ability to manage behaviour in line with school expectations	<ul style="list-style-type: none">• Understanding of the principles of forest school.• Knowledge of the Primary PE Curriculum
Other requirements	<ul style="list-style-type: none">• Positive, proactive and flexible approach to working• Commitment to safeguarding and promoting the welfare of young people• Satisfactory DBS check, Medical Clearance and References.	