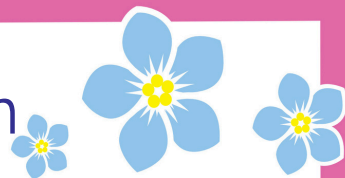


# Department Information



## Subject Leader of Art

### The Arts at The Belvedere Academy

Belvedere consistently ranks as one of the top schools in Liverpool. Despite our sustained success, we remain restless in our pursuit of excellence, constantly striving to enhance both the academic and extracurricular development of our pupils. As a non-selective, state-funded academy with a mixed-ability cohort, we take immense pride in our inclusive ethos and the exceptional progress our students make.

#### **Our Philosophy: Creativity as a Haven and a Core Academic Pillar**

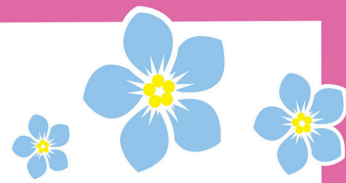
In the Arts Department, we believe that creative subjects are essential to a student's wellbeing. For many, our classrooms and practical spaces are a haven for mindfulness and personal growth. However, we also champion the Arts as a rigorous academic discipline.

Within the Academy, the Arts hold equal status with the Sciences, Humanities, and Languages. Our subjects are a popular and realistic choice for high-achieving students who recognise that creative thinking enhances any career path, from Mathematics to Medicine. This high profile is reflected in our vibrant corridors, where continuous displays and annual exhibitions serve as a testament to the professional standards our students achieve.

#### **A Thriving Professional Environment**

The Arts Department is an incredibly successful and collaborative environment, comprising six key disciplines: **Art, Textiles, Drama, Music, Physical Education, and Food/ Hospitality & Catering.**

We are a team of specialists who model outstanding practice in teaching, assessment, and intervention. We foster a culture of "creative risk" not just for our students, but for our staff. It is an innovative, supportive space where we share successes and failures alike to constantly refine our craft. Our team is deeply integrated into the wider life of the Academy, with members holding key leadership roles such as Head of Sixth Form, SEND representatives, and Mental Health Coordinators.



### **Beyond the Classroom: Impact and Outreach**

Our work extends far beyond the school gates. We maintain a rich "Artist in Residence" outreach program and have established prestigious partnerships with the Tate Liverpool, FACT, and local theaters.

Enrichment is woven into the fabric of daily life at Belvedere. The Arts department drives this mission through a diverse extracurricular program, ranging from the culinary creativity of "Cooking for Fun" and Arts & Crafts, to the vocal excellence of our Chamber Choir and the high-energy Drama Festival. We celebrate these successes relentlessly through newsletters, competitions, and postcards of praise, ensuring our students' identities are built on confidence and achievement.

### **Facilities and Structure**

The department is well-resourced to support high-level technical outcomes, featuring:

- Two dedicated Art studios
- Two specialist Textiles rooms
- A professional Food and Catering suite
- Performance spaces for Music and Drama

You will be joining a strong, dedicated, and passionate team with a shared vision of excellence, ensuring every Belvedere pupil possesses the critical thinking and creative flair to challenge and interpret the world around them.

For more information about our different subject areas, please visit the school website : <https://www.belvedereacademy.net/>