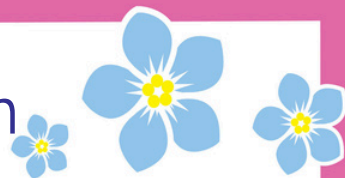


Department Information



Teacher of Chemistry

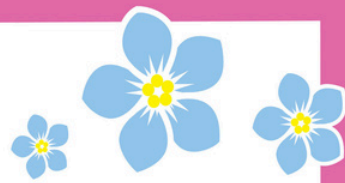
Science at The Belvedere Academy

Belvedere consistently ranks as one of the top schools in Liverpool with sustained success in many areas of academic life. We remain restless in our pursuit of excellence, constantly striving to enhance both the academic and extracurricular development of our pupils. As a non-selective, state-funded academy with a mixed-ability cohort, we take immense pride in our inclusive ethos and the exceptional progress our students make.

Science is the largest Curriculum Area in the academy. Post 16, Science based subjects are extremely popular options for our students both at A level as well as Level 3 vocational courses. It is an incredibly successful and collaborative environment, comprising four subject areas: Biology, Chemistry, Physics and Health & Social Care with Child Development.

We are a team of subject specialists who model outstanding practice in teaching, assessment, and intervention, supported by three subject specialist laboratory technicians. We celebrate successes relentlessly through class rewards, competitions, and postcards of praise, ensuring our students' identities are built on confidence and achievement. Students succeed regularly in science and are challenged to believe in themselves and strive for excellence. This makes science a popular and realistic choice for high-achieving students who recognise the strength of continuing to study the sciences and the options and opportunities it will give them in the future. This high profile is reflected in our vibrant corridors, where excellent displays and positive, encouraging atmosphere serve as a testament to the professional standards and excellence that our department strives for.

We have modern lab facilities capable of catering for a wide range of specialisms and courses. We run a high level of practical experiments with our pupils and take pride in the level of practical and demonstration work our staff and students produce.



We are also well resourced for IT activities and simulations with a modern suite of promethean interactive whiteboards with dedicated PCs in every laboratory, 2 sets of class chromebooks that are used within the department for a variety of e-learning and Edtech activities. We have a STEM coordinator who works closely with the careers team to provide fantastic opportunities for our students to engage with a variety of interesting and exciting Science and Technology initiatives, both in and out of school.

Enrichment is a big part of our Science offering at Belvedere. The Science department extracurricular program currently includes a morning "science club" where the students do a wide range of exciting science activities. We also have an Astronomy club that uses practical, creative and interactive activities to bring the study of space and the universe to life. We also have a national space ambassador who works to run sessions throughout the year to engage the pupils and enrich their knowledge about space and engineering. We run a high energy celebration for British Science week involving class, form and extra-curricular activities that run for all year groups. The department also runs a number of trips including to Chester Zoo, STEM competitions and different university events.

You will be joining a strong, dedicated, and passionate team with a shared vision of excellence, ensuring every Belvedere pupil possesses the core knowledge, critical thinking and analytical skills to understand, interpret and appreciate the world around them.

For more information about our different subject areas, please visit the school website : <https://www.belvedereacademy.net/>