



**Budehaven  
Community  
School**

# TEACHER OF COMPUTING

Start date: 1st September 2026  
Full-time, one year temporary

Deadline for applications is 15:30, Monday 18th May  
with interviews taking place shortly afterwards.

**Information for applicants**

[www.budehaven.cornwall.sch.uk](http://www.budehaven.cornwall.sch.uk)



# ABOUT BUDEHAVEN

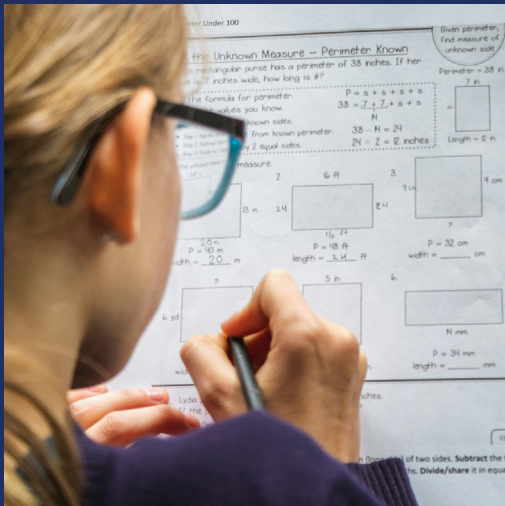
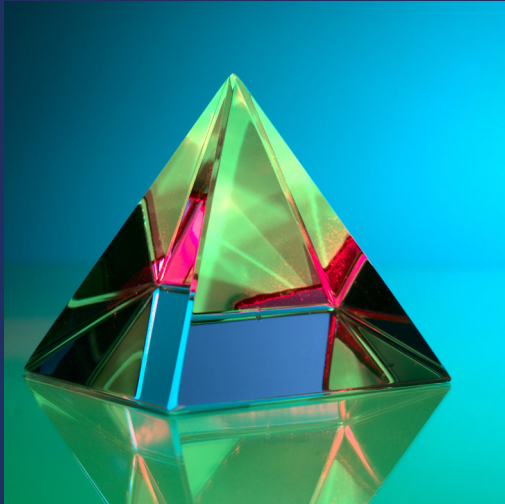
*"Budehaven is a true community school"  
Ofsted, May 2024*

Budehaven Community School is located on the beautiful north Cornwall coast in the town of Bude. We are proud to be a fully comprehensive school, welcoming and providing an inclusive education to students aged 11 to 19. Our school benefits from a thriving, successful Sixth Form, from which many of our young people access some of the top universities in the UK.

Budehaven Community School is a thriving environment to be part of, and our ethos, which is built on a foundation of Care, Enjoyment and Opportunities, building Responsibility, Confidence and Success, is tangible from the second you walk through the door. As you travel around our school, the energy of the students and staff is infectious and it is clear to see that we uphold high standards of behaviour and attitudes to learning. The stunning work of our talented young people is on display around the school. We have an annual art exhibition, where members of the community admire the work of our young people.

We celebrate talent, skill, effort and difference, and the results of this are evident in every part of the school community. Our young people benefit from excellent sports, music and performing arts facilities,

Fundraising activities and competitions that take place across our school bring out the generosity of all members of our Budehaven family.



Our young people compete at a national and international level within sporting competitions; we are incredibly proud of them and we are so grateful for the support that our parents, carers and other members of our community give to our students. The musical and theatrical talents of our students are stunning, ranging from the rock band to the samba band, and performances such as *The Curious Incident of the Dog in the Night time*, *Charlie and the Chocolate Factory* and the forthcoming 'Alice'. We have regular musical concerts, which are open to all members of our community.

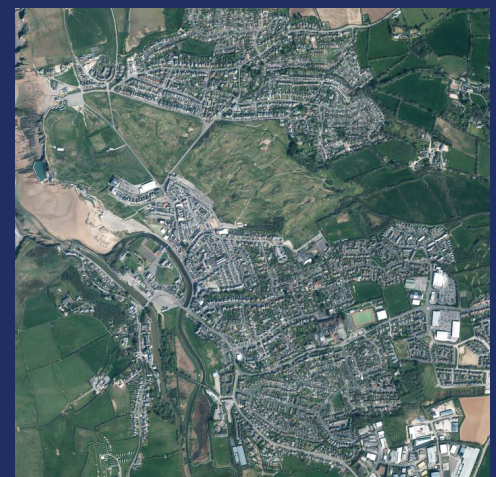
We firmly believe that we provide a great education for all, both inside and outside our classroom, for all students, regardless of their background. Our students achieve well, with our pupils following a carefully sequenced curriculum that builds on prior knowledge and understanding, linking ideas within and across subjects. Key Stage 3 prepares them well for the challenges of GCSE and A Level. Our pupils understand why they have learned what they have learned, and how it shapes their future learning and aspirations. Our young people are bright, interested and interesting.

We are incredibly proud of our Sixth Form, which provides a range of A Level and other Level 3 courses. We are also very proud of our Sixth Form students; every year many of them go on to Oxbridge, Russell Group, national and international universities.

Budehaven students and staff are proud of our school and the community it serves; we are ambitious for our students, academically and for their development into curious young people. Our students understand and can articulate their thoughts and ideas on a wide range of topics, from climate change to politics, psychology to English Literature. They look beyond their locality, look at the world in wonder, and become thoughtful and productive members of the wider society.

## OUR STUDENT COMMUNITY

**1134 on roll, with 114 in the Sixth Form**



# LETTER FROM THE HEADTEACHER

Dear Applicant,

## **Re: Teacher of computing – Budehaven Community School**

Thank you for your interest in the position of Teacher of computing at Budehaven Community School. We are delighted to offer this exciting opportunity for a committed and enthusiastic individual to join our vibrant and inclusive school community.

At Budehaven Community School, we are proud of our strong sense of community, our supportive ethos, and our commitment to providing the highest quality of education for every student. We are looking for a talented teacher who shares our passion for the subject and can inspire and challenge our students across Key Stages 3 to 5.

As Headteacher, I am privileged to work alongside a dedicated team of professionals who are determined to make a difference in young people's lives. We are committed to supporting our staff with high-quality professional development and opportunities for career progression. I am also, first and foremost, a teacher myself, having taught science for nearly twenty-two years. I appreciate how important computing is, not only as a subject in its own right, but also how it contributes to other subjects across the curriculum and wider world. I am passionate about learning, and believe that no matter what the starting point of a child is, or their future ambitions, computing should be enjoyable and accessible. We will provide ongoing CPD for all, to ensure our teachers are at the forefront of the latest knowledge and developments in computing teaching. We work in partnership with organisations such as the NCETM, and provide training and development opportunities for all staff.

Whether you are an experienced teacher or an Early Career Teacher, we welcome applications from individuals who are keen to make a positive contribution to our school and wider community. If you share our values and believe you can help us continue to raise aspirations and achievement, we would be delighted to hear from you.

Visits to the school are warmly encouraged and can be arranged by contacting the Headteacher's PA, Clare Brown: [clare.brown@budehaven.cornwall.sch.uk](mailto:clare.brown@budehaven.cornwall.sch.uk) More details about the post, including the job description and person specification, are available in our application pack.

Thank you again for your interest in joining Budehaven Community School. I look forward to receiving your application.

Yours faithfully,



Mr Dominic Wilkes - Headteacher  
Budehaven Community School

# ABOUT THE POST

## Teacher of Computing

Start date: 1st September 2026

Full-time, one year temporary

We are looking to appoint a well-qualified Computer specialist who is able to enthuse and motivate children in I.C.T.

- You will be ambitious for what all students can achieve, always striving for the best, putting them first at all times.
- You will set exceptionally high standards of behavior and attitudes, and achievement for all in the classroom.
- You will plan and deliver innovative and challenging lessons that will inspire our students to become articulate, curious, imaginative, capable and productive members of our society.

You will have the opportunity to teach across the whole age range including Key Stage 3, Key Stage 4 and a range of post 16 courses.

The department currently offers:

- GCSE Computer Science (OCR)
- Cambridge Nationals Level 1 & 2 Creative iMedia
- A Level Computer Science

Our school ethos is built upon *Care, Enjoyment, Opportunities, Responsibility, Confidence and Success*. In May 2024, Ofsted visited the school, commenting "*Budehaven is a true community school. Many pupils come from a generation of families that have previously attended this school. They are proud to be a pupil here. The school is warm and welcoming. Staff are aspirational for what pupils have the potential to achieve. Pupils respond well to this encouragement. In their response to Ofsted's Parent View, many parents used the word 'thriving' to describe their child's experience at the school*"

We can offer you a teaching post in a department of enthusiastic and experienced teachers. You will be well supported to innovate and will be expected to contribute fully to the school.

Budehaven Community School is committed to safeguarding and promoting the welfare of children and young people. Enhanced DBS clearance is required.

For further information and an application form, please contact

Mrs Clare Brown at the school or visit our website:

[www.budehaven.cornwall.sch.uk](http://www.budehaven.cornwall.sch.uk)

**Tel: 01288 353271**

**Email: [clare.brown@budehaven.cornwall.sch.uk](mailto:clare.brown@budehaven.cornwall.sch.uk)**

Deadline for applications is 15:30 on Monday 18th May with interviews taking place shortly afterwards.

# JOB DESCRIPTION

**Teacher of Computing. Full time. Main Pay Scale.  
(Relocation allowance available).**

## **Job Specification**

- Ensure all students are safe at all times, and that behaviour and standards are outstanding.
- Convey a passion for computing, both within and beyond the curriculum.
- Carry out the professional duties of a classroom teacher as per the Teachers' Standards, adhering to them both inside and out of the classroom.
- Plan and teach well planned, well structured, lessons that inspire and motivate.
- Play an active role in the department to develop the knowledge rich curriculum, and have a full and clear understanding of how the curriculum is structured for our students, and how each topic area plays its part in the big picture of the curriculum as a whole.
- Contribute fully to the continued raising of standards in GCSE and A Level performance, ensuring your classes make better than expected progress in all Key Stages.
- Support and collaborate with colleagues in an enthusiastic, positive and supportive manner ensuring good teaching practice is developed.
- Develop a high quality ethos of learning amongst students based on high expectations and a shared vision, building all you do on the foundations of our Care-based school culture and ethos.
- Be an informed practitioner by keeping abreast of educational issues.
- Maintain and develop your skills and knowledge as a practitioner to a level required to be an excellent teacher.
- Keep up to date with new teaching and learning strategies and implement them as appropriate in your lessons
- Analyse student data to inform planning, and be able to communicate this effectively with parents and carers.
- Employ the school's policies in behaviour so that lessons are conducted free from distraction, and if issues arise, be able to communicate these with parents and carers in a professional manner.
- Ensure that the taught curriculum empowers young people to be successful in a competitive world.
- Assist in the development of schemes of work, resources and teaching strategies within the department.
- Contribute to the provision of extra-curricular activities.

# PERSON SPECIFICATION

## You will:

- Be an innovative and inspiring practitioner, always going above and beyond to help students achieve
- Be ambitious for yourself, your students and colleagues
- Be passionate about computing
- Have excellent subject and specialist knowledge
- Have a proven ability to develop positive relationships
- Have a positive outlook willing to seek out solutions
- Achieve excellent outcomes for all student groups, and ensure Disadvantaged pupils achieve as well as non-Disadvantaged pupils in your classes.

## Qualification Criteria

- Qualified to degree level and above in a subject relevant to the role
- QTS

## Experience

- Experience of teaching Computing to a range of abilities and ages (this may be from your training if an ECT)
- Experience of developing resources to support the curriculum and effective learning in the classroom
- Experience of reflecting on and improving teaching practice to impact teaching and student achievement

## Knowledge

- Deep understanding of the importance of curriculum - intent, implementation and impact of the Computing curriculum, sequencing of the curriculum and how it fits together.
- Understanding of the OFSTED Framework and what constitutes effective teaching and learning, curriculum implementation and impact.
- Excellent knowledge of the National Curriculum
- Knowledge of the latest educational research, findings and best practices
- Understanding of the strategies needed to establish consistently high aspirations and standards of results and behaviour.

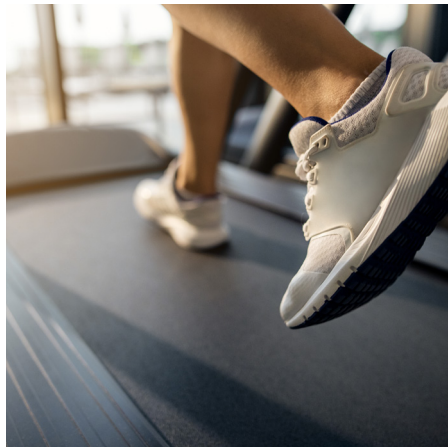
## Teaching and Learning

- Excellent classroom practitioner – ensures that their own classroom practice models best practice
- Effective and systematic behaviour management, with clear boundaries, sanctions, praise and reward
- Good communication, planning and organisational skills
- Demonstrates resilience, motivation and commitment to driving up standards of achievement
- Acts as a role model to staff and pupils
- Commitment to regular and on-going professional development and training to establish outstanding classroom practice.
- Vision aligned with our culture and ethos of high aspirations, expectations of self and others, based on care, with the aim of achieving success for all
- Genuine passion and a belief in the potential of every pupil
- Motivation to continually improve standards and achieve excellence
- Commitment to equality of opportunity and the safeguarding and welfare of all pupils

**This post is subject to an enhanced Disclosure & Barring Service check.**

# WE VALUE YOU AND WE CAN OFFER...

- Students who are welcoming, well behaved and curious young people
- The support of an experienced governing body and a dedicated team of staff and leaders
- A school that is at the heart of its community and is well respected
- CPD tailored to support you as you develop within your role
- A school that has innovative education and health care links
- A successful sixth form with students who go on to top universities
- Free use of the on-site Gym which was refurbished Autumn 2021
- Number of after school staff activities such as 5 aside football
- Free membership of the Smart Clinic, benefits include:
  - 24 hour helpline
  - Access to a virtual GP 24/7
  - Support and advice on
    - Managing a condition
    - Better health
    - Cognitive behavioural therapy
    - Counselling
    - Anxiety Management
    - Physiotherapy
    - Stress Management
    - Assertiveness and self-confidence training
    - Time management
- Free onsite parking
- Lifestyle Savings – Access a huge range of savings across the UK's major retailers
- Home and Electronics – Spread the cost of thousands of technology and home appliances shipped by Currys and John Lewis & Partners
- Cycle to Work – Save up to 43%\* on the latest bikes and accessories for your commute to work (savings are realised through a salary sacrifice arrangement. Excluding disposal fee. Figures are a guide only and dependent on personal situation).
- On site Gym Membership
- Eye Test Vouchers for eligible staff
- Physiotherapy – Access to online advice and exercise programmes
- Counselling & Wellbeing Support - Access to a Wellbeing Resource Library
- GP Phone & Video Consultation – Accessible 24 hours a day, 7 days a week



# OUR LOCALE...

North Cornwall's beaches are famous for their haunting beauty and those in the Bude area are no exception. Vast expanses of clean, golden, sandy beaches, often backed by rugged cliffs, have captivated many a visitor's imagination over the centuries.

**Bude** itself has two main beaches, **Summerleaze** great for surfing and **Crooklets** which enables access at low tide to the quiet coastline north towards **Northcott** and **Sandymouth**.

South of the town the beaches and bays of **Widemouth, Wanson, Millook & Crackington Haven** which offer a wide range of attractions from surf schools to Geological marvels. The coast path in both directions from Bude offers stunning scenery and in places a great workout!

Head north to **Hartland Point** marks the location where the coastline takes a sharp right hand turn into **Bideford Bay**. The lighthouse there shines it's warning out across towards the nature reserve of **Lundy Island**, a unique habitat and perfect for puffin spotting and swimming with the friendly seals.

**Hartland Quay, Spekes Mill Mouth, Welcombe, Marsland Mouth** and **Morwenstowe** offer access to the South West Coast path in all it's glory. The reverend **Hawker's Hut** is well worth seeking out.

A little further southward of Bude leads you to **Crackington Haven**, a beautiful little bay with Cafe's and a Pub. Rising up to 'High Cliff' you then descend towards **Boscastle**, a renowned and attractive National Trust village with spectacular cliff-hung harbour entrance, small quay and walks through beautiful **Valency Valley** and **St Nectan's Glen**. Thomas Hardy met his first wife here and based 'A Pair of Blue Eyes' on his experience in the district.

**Tintagel**, can get busy in high season but is always worth a visit. The ruined but spectacular **Tintagel Castle**, built in the 12 & 13th century by the Earls of Cornwall is another must see. Walks to **St Nectan's Glen, Bossiney Cove** and along **Rocky Valley** are firm favourites of staff at the school.

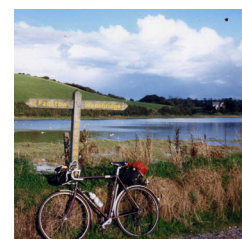
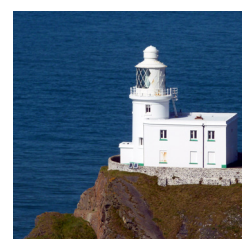
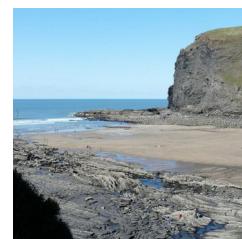
If you make it that far then its just a short hop to **Port Isaac**, an unspoilt fishing village where white slate-hung houses run down to a sheltered harbour. Its a favourite location for film and TV companies with 'Poldark' and 'Doc Martin', 'Amy Foster' and 'Saving Grace' being shot there. Its little maze of alleyways (one called Squeeze-ee-belly) and old pilchard cellars, shingle beach and working crab boats are fascinating.

**Wadebridge**. Busy shopping centre. An historic centre for river, road and rail, with a 17 arch bridge over the River Camel, purportedly built on the foundation of wool sacks and known as 'The Bridge of Wool'. From here explore the wonderful **Camel Trail** South to Padstow or North to Wenford Bridge, with the section between Bodmin and the end of the trail offering some of the quietest and most beautiful trail riding to be had in the South West.

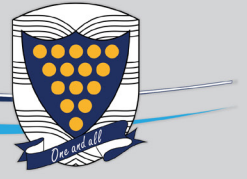
Close by the A39, south of the town are the **Nine Maidens**—a line of tall stones, supposedly petrified maidens guilty of dancing on the Sabbath.

These are just a small sample of the huge variety of places to visit and things to do in this part of the world. We may well be a few miles from the major cities of Exeter, Truro and Plymouth but we make up for it with a quality of life that's hard to beat.

**OS Maps: 190** 'Bude & Clovelly', **111** , 'Bude, Boscastle & Tintagel' and **200** 'Newquay & Bodmin'.



# OUR ETHOS & VALUES



Belonging



Success



Confidence



Responsibility



Opportunities



Enjoyment



Care

Budeven Community School's Ethos and Values

Inclusion



# FIND OUT MORE:

[www.budehaven.cornwall.sch.uk](http://www.budehaven.cornwall.sch.uk)

[www.facebook.com/budehavenschool](https://www.facebook.com/budehavenschool)

[www.instagram.com/budehavensixthformofficial](https://www.instagram.com/budehavensixthformofficial)

<https://bsky.app/profile/budehavenschool.bsky.social>

