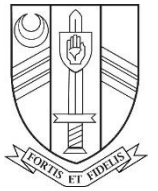
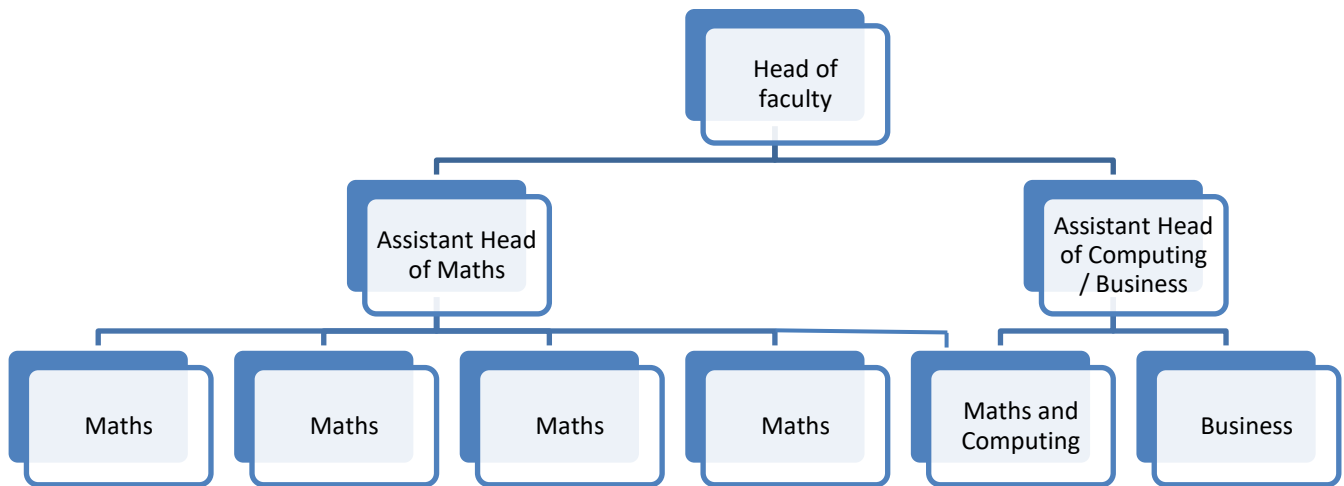


Sir John Nelthorpe School

Teacher of Computing and Mathematics



Mathematics, Computing & Business Faculty Structure



The Mathematics, Computing & Business Faculty forms an experienced, professional and well-motivated team maintaining high standards and good results. We have a designated SLT line manager, good resources and regularly collaborate to strengthen our faculty.

The Computing curriculum is currently delivered through a carefully planned curriculum, with guidance and support, we hope that every student can achieve the appropriate skills for the next stage of their lives.

This vacancy provides an excellent opportunity for a forward-thinking teacher of computing and maths. This role offers the combination of teaching both computing and maths depending on the strengths of the applicant. We require a driven and committed team player who is willing to play an active role in building on our current success and continue to develop the role further. The faculty support links between maths, business and computing and has developed a scheme of work where topics complement the common skills being developed. Ideally, the post would suit a newly qualified teacher. The person appointed will bring enthusiasm and fresh thinking to a successful team.

Computing Curriculum

At KS3 students have one hour of computing per week. All three year groups are taught in mixed ability.

Currently, we offer OCR's A Level in Computer Science and the Cambridge Technical in IT Level 3 (CTECH) at KS5 in our joint sixth form.

Maths Curriculum

Through a carefully planned curriculum, with guidance and support, we hope that every student can find enjoyment through their learning of maths in such a way that it prepares them for the next stage of their lives.

We strive to establish the confidence and necessary mathematical skills to produce clear solutions to problems encountered both in the mathematics classroom and in real life.

Currently we teach a 3-year Key Stage 3 and 2-year Key Stage 4. Students are grouped into sets based on their Key stage 2 results and this is then reviewed regularly through teacher assessment. At Key Stage 5 we offer A-level mathematics.

Our faculty is proud of our achievement record and the support we provide all our students at Sir John Nelthorpe school. Please contact us for any further information.