



# Careers at SHARE Multi- Academy Trust

**Teacher of Design Technology and  
Engineering**

**Whitcliffe Mount, A SHARE Academy**

**Application Pack**

*Valuing People, Supporting Personal Best*



Welcome to SHARE Multi-Academy Trust, a supportive and close-knit family partnership of eight academies across West Yorkshire, and a Teaching School Hub.



At SHARE, we are committed to delivering strong educational standards within our academies and providing our people with excellent careers. This is all underpinned by an unwavering commitment to our vision of *Valuing People, and Supporting Personal Best.*

I believe our role as educators is to help children and young adults to instil a desire to learn, to overcome barriers to success, and to encourage an ambition to achieve. To reach this standard, we must first deliver for our people and ensure they feel valued, listened to and have a strong sense of belonging. In turn, our colleagues, pupils, and society all benefit enormously.

Two of our guiding principles are that 'quality is our driving force', and 'teams drive success'. We know that recruiting and retaining an outstanding workforce is fundamental to achieving our aims. We therefore make it our mission to ensure every colleague within the trust has access to exceptional training and personal development opportunities, alongside a positive teaching environment, clear and ambitious progression pathways, and highly competitive packages.

We are also committed to sharing best practice across our trust, creating networks for colleagues to learn from one another, and fostering a learning environment and workplace where everyone feels supported and inspired, and can truly thrive. As a result, we are proud to be an employer of choice.

Thank you for your interest in our academies and trust. I hope you will consider joining us as we continue to deliver the very best education for our pupils. Whether you are an education practitioner looking to start your journey, or an established professional wanting to bolster your career – we look forward to working together soon.

**John McNally**

Chief Executive Officer  
SHARE Multi-Academy Trust

*We must first deliver for our people and ensure they feel valued.*

Quality is our driving force



Teams drive success



*We are proud to be an employer of choice.*

ABOUT US

TESTIMONIALS

JOB DETAILS



# About our Trust

SHARE Multi-Academy Trust was first established in 2014, and since then, we have built a solid reputation for high standards and strong achievements.

We operate four successful primary academies and four high-performing secondary academies across the region. Our outstanding provision is supported by our Calderdale and Kirklees Teaching School Hub and national training accreditations, which enable us to deliver exemplary training and development opportunities for education practitioners at every stage of their career, from initial training to executive leadership.

Our academies achieve excellent outcomes across the board. This includes academic attainment and school improvement, as well as maintaining exceptionally high standards in all aspects of school life including behaviour and attendance.

As a result of the trust's supportive and inclusive approach, senior leaders invest significant time in supporting positive pupil behaviour and attendance. Our pupils attend well and are positive about learning. In turn, this creates a positive and respectful teaching and learning environment for staff, with teachers able to focus on delivering an excellent education to students without distraction, and with a manageable workload.

## Whilst being close-knit, we are ambitious for the future.

We are always looking for additional ways to expand our positive impact, be that by working with new schools on exciting initiatives, or by collaborating with our talented team of staff.

Our aim has long been to be the best trust, not the biggest. Our priority for the future is to keep improving standards, building on our successes, and raising aspirations so we can support even more pupils to achieve even better outcomes.



“

**Behaviour is excellent, and there are high levels of mutual respect and tolerance amongst pupils and staff.**

*Ofsted, 2023\**

”



\*2023 Ofsted report for Thornhill Community Academy, A SHARE Academy



# Your Career at SHARE

**Our vision of ‘Valuing People, Supporting Personal Best’ underpins everything we do. Central to our work and ability to deliver a transformational education, is our dedication to developing our greatest asset, our staff.**

That is why we have an outstanding pledge to teachers and support staff to provide professional development and training opportunities, particularly through our Teaching School Hub. We are committed to investing in our staff, ensuring that they have fulfilling careers and enjoy their jobs every day. This is fundamental to our ability to turn academies around and deliver the very best education to pupils.

***We offer a competitive package to all our colleagues.***

We have committed to offering our colleagues pay and conditions that are at least as good as those available to colleagues in maintained schools. In practice, we often exceed them. We continue to contribute to the generous Teachers and Local Government Pension Schemes and at least match pay awards agreed or recommended by the Local Government Association and School Teachers’ Pay and Review Body. We use the flexibilities available to us as an academy to enhance our offers where we can.

As well as two generous pension schemes, we also offer employee assistance and wellbeing packages; and flexible and family-friendly policies, such as flexible working, shared parental leave and enhanced maternity, paternity, and adoption entitlement, giving colleagues the control and freedom to work in a way that suits their needs. We offer incremental progression and cost-of-living pay increases, subscribe to local and national discount schemes, and provide exceptional onsite catering facilities.



**We work as a collective group of professionals to achieve common goals. Watching new teachers and leaders become established in their roles gives me an immense sense of professional pride, as they help our pupils to achieve excellent outcomes.**

**Jack Wyatt**

*Associate Principal  
Shelley College*



ABOUT US

TESTIMONIALS

JOB DETAILS



# Our Shared Vision and Mission

## Our Mission

We believe education is all about people. Our success is measured in how we help our pupils. We can only attain this success by employing talented, committed staff, and working in partnership with our whole academy communities.

Our mission means we endeavour to ensure every one of our pupils and members of staff enjoy coming to our academies, and that all of us try our very best in everything we do. We help everybody, regardless of background or starting point, to gain the knowledge, skills, and habits that lead to happy and successful lives, both now and in the future.

## Our Vision

We want to transform education for the better, raising aspirations in diverse communities, increasing knowledge, and developing the skills that children and young people need to make their lives rewarding and successful.

Our vision is for our teachers and staff to continue to choose our academies and our trust as a working environment where, through our high-quality training and progression pathways, they can achieve their career aspirations. Our academies will be the first choice for parents because we provide a safe and nurturing environment, with excellent academic standards and a wealth of opportunities. Our trust will continue to be a well-regarded family network where other schools choose to join us, benefiting from strong support services, collaboration, and best practice sharing.

**“ We live by our vision of 'Valuing people, Supporting personal best', bringing this to life in everything we do. We are all part of a family that has high expectations and a strong moral compass ”**

**Jenny Carr**  
*Executive Principal and  
Headteacher, Royds Hall*

ABOUT US

TESTIMONIALS

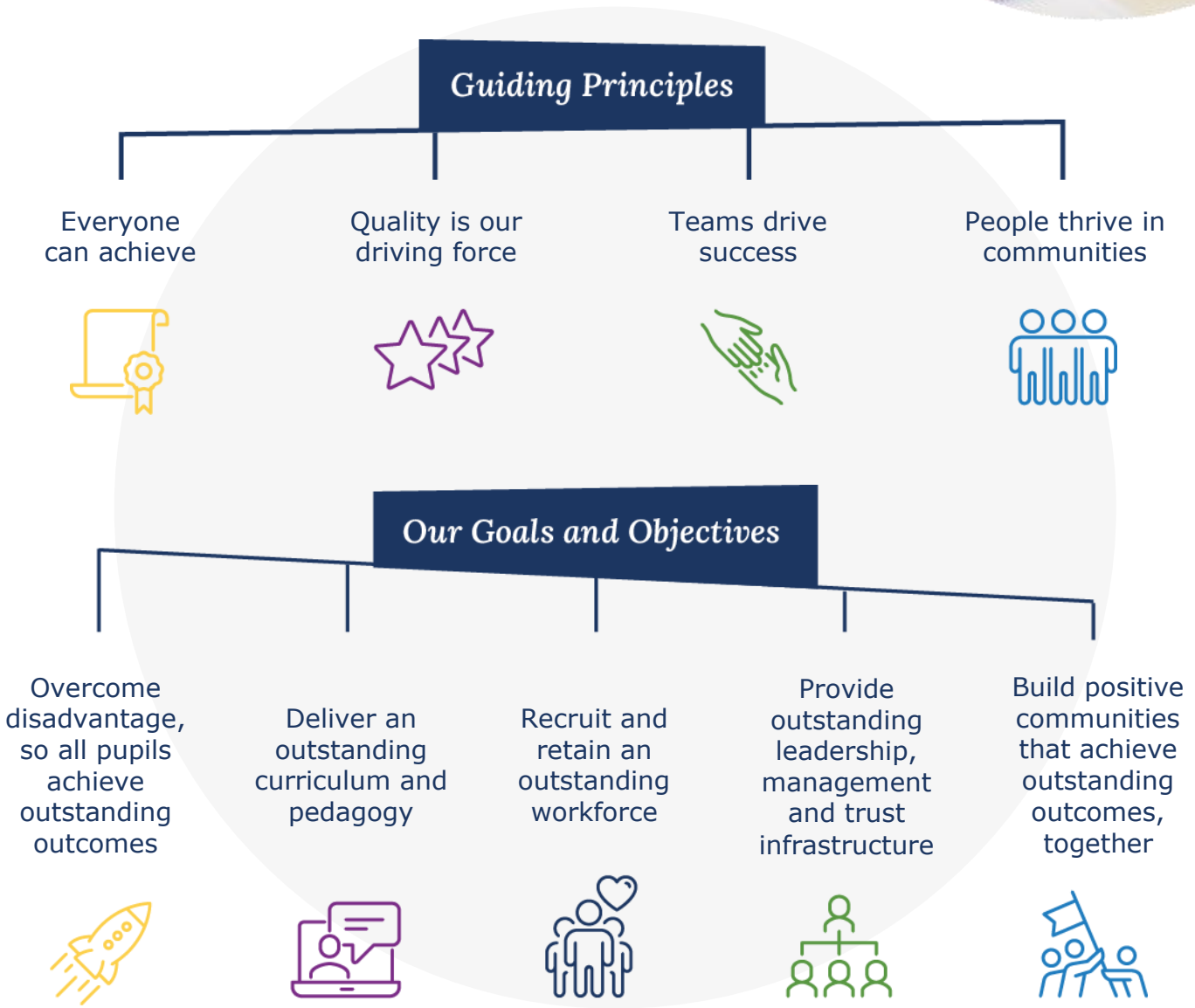
JOB DETAILS



# Our Guiding Principles



We have a clear and ambitious strategy as a trust, so that we can ensure we collectively fulfil our overarching vision and mission. This is built upon our guiding principles, with distinct goals and objectives linked to accountability and performance measures.





# Academies



Our secondary academies



Our primary academies

Click below to select the location of the vacancy you are interested in to find out more.



*\*Most recent Ofsted prior to academisation in 2022*

# Our Outcomes

**At SHARE, we are proud of the high standards and expectations we set and uphold, across the board. Consequently, we consistently surpass both national and regional school results. Our academies consistently secure excellent academic outcomes, with achievement levels being amongst the highest in our region.**

Supported by robust, well-resourced, and accountable improvement plans, we have a proven track record of significantly improving our academies, as reflected in national performance measures and our strong Ofsted outcomes.

Through our broad curriculum, first-class careers education and guidance, and our wide-ranging enrichment offer, we successfully prepare our young people for life beyond the classroom. We ensure no child is left behind, and do so by fostering a safe, inclusive, and nurturing environment where all barriers can be overcome.

***We remain committed to developing our staff, who are our greatest asset in achieving our mission.***

Alongside our successful Teaching School Hub and training accreditations, we take great pride in one another's individual successes. Many of our most senior leaders have progressed through the routes. That includes the countless colleagues who have enjoyed varied, rewarding, and long careers with our academies and trust, as well as those who are just starting on their journey and are glowing with potential.



**ABOUT  
US**

**TESTIMONIALS**

**JOB  
DETAILS**





# What our colleagues say



“

Since joining SHARE as an RQT, the trust has always supported me in my career, giving me ample opportunity to develop and demonstrate my skills, whether through official training courses such as the National Professional Qualification (NPQ) or by offering opportunities to deliver CPD and build leadership skills.

My career progression at SHARE has been rapid thanks to the encouragement of leaders. With every role I have applied for, or training opportunity considered, leaders have always been approachable, supportive, and encouraged these conversations.

There are regular opportunities within the trust to try new things and gain experience in areas that interest us. **I am really glad I joined Share MAT because the culture of recognition, support, and celebration gave me the confidence I needed to chase my career goals.**

**Lewis Day**

*Trust Improvement Leader (Personal Development); PSHE Leader; Teacher of English at Shelley College*

”

“

The care and support that has been provided during my time with the trust has not only allowed me to help make a difference to young people's lives but it has **enabled me to excel in a fantastic career and in a role which is so fulfilling.** It has been life changing!

**Melanie Delaney-Hudson**

*Assistant Headteacher (SEND and Inclusion), Thornhill Community Academy*

”



ABOUT US

TESTIMONIALS

JOB DETAILS



# What our colleagues say



“

Alongside being part of the central trust team, **I enjoy getting the chance to meet and work with other colleagues across the trust.** I started as an apprentice and every year SHARE has helped me to progress further, either by supporting me with professional development in the form of external or internal training, which constantly bridges the gap to progress onto the next level when the opportunity arises.

”

**Kieran Miller-Walker**  
*Finance Officer, SHARE  
Multi-Academy Trust*



“

**As Phase Leader, I am pleased to be able to support other teachers with passion and excitement to help them lay the foundations that mean pupils thrive throughout their educational journey.**

Being a part of the Share MAT family, means there is always a vast amount of knowledge, guidance and support available. The trust annual training day on the first day back really makes you feel like part of a team, with common goals to provide a unique learning journey for all children.

**Ben Modeste**  
*Phase Leader of Lower Key Stage 2,  
Luck Lane Primary School*

”

ABOUT  
US

TESTIMONIALS

JOB  
DETAILS



# First-class careers, through bespoke training and support

**Our success as a trust depends entirely on our colleagues who are the bedrock of all we do. That's why we're determined to recruit and retain the best staff by offering first-class training and support, alongside highly competitive packages.**

Across the trust, we pledge to deliver outstanding professional development and training opportunities that are bespoke for our teaching and support staff. We support colleagues through ongoing training, coaching, and mentoring using the latest evidence-based research, to strengthen their expertise.

Alongside career pathways carved out for our support staff, we similarly offer a variety of progression and promotion routes for teachers. In addition to the traditional progression journey, we deliver a full suite of specialist and leadership National Professional Qualifications (NPQs), offer Lead Practitioner positions for those with classroom-based preferences, alongside middle and senior leadership training programmes for new and aspiring leaders. With additional development opportunities for staff including research projects, subject enhancement training, and access to The National College online development platform, we are dedicated to supporting our staff to develop and grow as educators.

We also champion cross-trust collaboration and best practice sharing, maximising the opportunities and expertise available across our schools. All colleagues are encouraged to meet regularly, including through various forums where they can discuss ideas, and share experiences and resources.

We are committed to protecting our staff's wellbeing by providing the support, guidance, and training needed to achieve the highest standards they are capable of.

*Just as we encourage our pupils to achieve their personal best, we want the same for our staff, with colleagues having their own personal development plans.*



ABOUT  
US

TESTIMONIALS

JOB  
DETAILS





# Endless opportunities through our **Teaching School Hub and Training Accreditations**



**Our commitment to professional development and raising opportunities and aspirations in the communities we serve and beyond, is best reflected through our Teaching School Hub and Training Accreditations.**

We are immensely proud to be the Teaching School Hub for Calderdale and Kirklees, enabling us to connect with, shape, and inspire teachers and practitioners of the future.

Through our Teaching School Hub and training platforms, we induct Early Career Teachers (ECTs) into the profession through an outstanding Initial Teacher Training programme. All our academies similarly play an important role in supporting trainee teacher placements through the Hub and with other local trainee teacher providers. We also offer a full suite of specialist and leadership NPQs through the Hub, including for staff themselves to facilitate Early Career and NPQ frameworks.

Since its launch, we are delighted that 1,000 new teachers have progressed or are progressing through our Early Careers Framework Course, with over 600 studying NPQs. We also continue to provide the Appropriate Body Service for nearly 500 new teachers.

Having the Hub as a central part of our trust family means it continually informs our approach to staff development and how we can enhance our training based on learnings and insights. It has also shaped our approach in recognising that development is a long-term, meaningful investment in our colleagues and therefore our pupils.

*Since the launch of the hub...*

**1,000 teachers**  
have progressed or are progressing through the **Early Career Framework**

**600 teachers**  
are studying **NPQs**

**500 teachers**  
using our **Appropriate Body Service**

**ABOUT US**

**TESTIMONIALS**

**JOB DETAILS**



## JOB ADVERT

### Job title:

**Teacher of Design Technology and Engineering**

### Academy:

**Whitcliffe Mount, A SHARE Academy**

### Headteacher:

**Rebecca Hesmondhalgh, Headteacher**

### Section:

**Design Technology**

### Reporting to:

**Head of Subject – Design Technology**

### Contract type:

**Permanent**     **Fixed Term**

### Time commitment:

Full-time.

### Band/Range:

MPR/UPR

### Further salary information:



ABOUT  
US

TESTIMONIALS

JOB  
DETAILS



## JOB ADVERT

### *Academy information:*

Whitcliffe Mount Academy is a large secondary academy in Cleckheaton, within close commuter distance of Huddersfield, Bradford, and Leeds. The academy is committed to supporting all pupils to achieve, develop and thrive so that they can be happy and successful.

The academy is a proud partner of the well-regarded and high-performing SHARE Multi-Academy Trust and is part of the Teaching School Hub for Kirklees and Calderdale. Whitcliffe Mount provides staff with a wealth of support and a wide range of opportunities to collaborate, network, and share best practice.

Whitcliffe Mount has a wonderful academy community and is a great place to work, where all team members play a vital role in making a positive impact on the life chances of others.

The academy is proud to offer:

- A supportive and ambitious environment where all students are encouraged to go beyond what they think they can achieve and to enjoy learning, helping them to lead successful, healthy and happy lives
- A vibrant place to work which equips staff to deliver their best every day, under the strong belief that Valuing People, Supporting Personal Best is the key
- A commitment that staff are happy, engaged and well supported at work, taking pride in students' attendance, behaviour, progress and development as well as their own
- Excellent training and guidance relevant to individual job roles, so expectations are understood and staff are motivated
- Great benefits, as an employer of choice, including outstanding CPD, supportive line management, and meaningful networking opportunities across the trust to aid personal development
- Supportive leadership, encouraging healthy work-life balance
- A high-quality teaching and learning environment, alongside good facilities
- A culture where children are happy, settled and confident, accessing a broad and balanced curriculum which provides a memorable educational experience for pupils and staff.

ABOUT  
US

TESTIMONIALS

JOB  
DETAILS





## JOB ADVERT

### *We are looking to recruit:*

An exciting opportunity has arisen for an outstanding Teacher of Design Technology and Engineering to join Whitcliffe Mount School. Do you have what it takes to provide outstanding teaching and learning experiences in Design Technology for students of all abilities? The successful candidate should be an inspirational teacher and a strong practitioner; a committed and motivated individual who can inspire others to raise aspirations, through offering an exciting and ambitious curriculum.

As a Teacher of Design Technology and Engineering, you will help to engage and enthuse learners of all abilities in this creative subject specialism. At Whitcliffe Mount, we want all our students to enjoy a broad, balanced and exciting curriculum and for them to become confident, independent learners. We want our staff to feel supported and inspired to achieve their personal best.

### *The ideal candidate will:*

- Be educated to degree level with QTS in their subject;
- An inspirational teacher and strong practitioner.
- Be passionate about supporting the Design Technology and Engineering in delivering ambitious learning and improving students' levels of progress and attainment;
- Have a clear vision of the value Design Technology and Engineering in the education of young people and lead by example to help all to achieve their personal best.
- Love encouraging, motivating and inspiring children through the support they give in order to encourage their learning;
- Be committed to our ethos that all pupils can achieve at Whitcliffe Mount School:
- Have great references demonstrating they are a suitable candidate, safe to work with children

### *For more information, get in touch with:*

Sarah Brierley – [sarah.brierley@sharemat.co.uk](mailto:sarah.brierley@sharemat.co.uk)

ABOUT  
US

TESTIMONIALS

JOB  
DETAILS



## JOB DESCRIPTION

### *Overall purpose of the role:*

As a Teacher of Design Technology and Engineering, you will be required to meet the general requirements of this post, as specified in the School Teachers' Pay and Conditions Document. In addition, you will be required to fulfil any reasonable expectations from the Head Teacher.

The post will require you to work in partnership with the Director of Learning for Performance, the Head Teacher, Senior Leadership Team, governors and staff to ensure the continuous improvement of the Academy.

### *Safeguarding requirements:*

This post requires the post holder to work in settings with children and young adults. Any employment offer is therefore subject to the results of an Enhanced Disclosure from the Disclosure and Barring Service (DBS). People who may have contact with younger children (i.e. primary school age) are also required to complete a declaration about family or other members of their household. Applicants **MUST** complete the MAT's standard application form to be considered, will be required to provide evidence of identity and qualifications and offers of employment will be subject to satisfactory references. For applicants who work or have recently worked in a school, one of the references must be from the Headteacher.

ABOUT  
US

TESTIMONIALS

JOB  
DETAILS



## JOB DESCRIPTION

### Key Outputs:

1. To implement and deliver an appropriately broad, balanced, relevant and differentiated curriculum for students' and support a designated department or curriculum/subject area as appropriate.
2. To monitor and support the overall progress and development of students as a teacher and form tutor, setting students individual improvement goals as appropriate.
3. To facilitate and encourage a learning experience which provides students with the opportunity to achieve their individual potential.
4. To contribute to raising standards or student achievement and attainment.
5. To share and support the school's responsibility to provide and monitor opportunities for personal and academic growth.
6. To promote and actively support the school's responsibilities towards safeguarding.
7. To prepare and regularly update subject materials.
8. To ensure that ICT, Literacy, Numeracy and subject specialism(s) are reflected in the teaching and learning experience of students.
9. To set regular, relevant and challenging homework tasks.
10. To teach students according to their educational needs, including the setting and marking of work to be carried out by students in school and elsewhere.
11. To maintain discipline in accordance with the school's procedures and to encourage good practice with regard to punctuality, behaviour standards of work and homework.
12. To ensure the learning needs of individual students are met, particularly vulnerable groups, such as those with SEN, disabilities or disadvantages students.
13. Where necessary, to liaise with parents and others to support students.
14. To provide regular, high-quality feedback to students that supports future learning and progress.
15. To undertake assessment of students as requested by external examination bodies, departmental and school procedures.
16. To assess, record and reports on the attendance, progress, development and attainment of students and to keep such records as are required.
17. To use the outcomes of on-going assessment to help shape future planning.
18. To self-evaluate and undertake professional development to help achieve the highest possible standards in role.
19. To reward and celebrate students' success.
20. To attend meeting and complete additional administration tasks as required by the role.
21. To undertake any other duties associated with the role, as may be decided by your line manager or Headteacher.

ABOUT  
US

TESTIMONIALS

JOB  
DETAILS





## JOB DESCRIPTION

### *Dimensions:*

- Range of Teachers approximately 80 across the whole school.
- Range of Students approximately 1400

### *Work/Business contacts:*

**Internal:** All teachers and support staff to advise how effectively to support students to achieve their Personal Best.

**External:** Parents and Families, Examinations Boards.

ABOUT  
US

TESTIMONIALS

JOB  
DETAILS



## JOB DESCRIPTION

*Expertise in role required (At selection – Level 1):*

### ESSENTIAL

- Qualified Teacher Status
- Degree or Equivalent
- Evidence of continuing professional development and a willingness to undertake further development as appropriate
- Evidence of/potential to become an excellent classroom practitioner, capable of inspiring students and forming good relationships with colleagues
- Ability to inspire and motivate students
- Able to analyse data with a view to developing strategies to improve performance
- Ability to monitor and evaluate impact of interventions and strategies
- Detailed knowledge of current developments in subject area for all levels
- Successful experience or the ability to teach subject at GCSE
- Up to date knowledge of the curriculum in Design Technology and Engineering and Key Stages 3 and 4
- Excellent communication skills
- Excellent behaviour management skills
- Commitment to the safeguarding of young people
- A willingness to work flexibly within the scope of overall hours, e.g. evening meetings

### DESIRABLE

- Knowledge of innovating teaching and learning strategies
- Highly competent in ICT and the use of computers
- A willingness to be fully involved in the wider life of School, including extra-curricular activities.

ABOUT  
US

TESTIMONIALS

JOB  
DETAILS



## JOB DESCRIPTION

### *Expertise in role – After initial and advanced development:*

- Evidence of monitoring and evaluating interventions and strategies
- Evidence of data analysis and strategies used to improve performance
- Evidence of on-going continuing professional development

### *Structure/Department Information:*

Head of Subject Design Technology → Deputy Director of Learning Design Technology → Teacher(s) of Design Technology and Engineering

## HOW TO APPLY

Please note that CVs will not be accepted. To apply, please complete an application form on the Every Candidate Portal using the application link below.

### *Application link:*

<https://candidates.every.education/Vacancies/Details?advertKey=8581a53f-c614-4154-884b-d39608e96840>

### *Closing date:*

**Monday 20<sup>th</sup> May 2024 at 12noon**

### *Interview date:*

**WC 20<sup>th</sup> May 2024**

Share MAT is committed to the Equalities Act 2010 and also to promoting the welfare and safeguarding of children and young people, by adhering to the "Keeping Children Safe in Education" guidance. All staff and volunteers are regularly trained regarding our expectations in keeping our students safe. An enhanced DBS is required for every post. An online search will be undertaken for all shortlisted candidates.

ABOUT  
US

TESTIMONIALS

JOB  
DETAILS







*Ready to start your career with Share MAT?  
Get in touch:*

**Visit**

whitcliffemount.co.uk

**Email**

whitcliffe.office@sharemat.co.uk

**Call**

01274 851152

**Address**

Whitcliffe Mount, A SHARE Academy  
Turnsteeds Avenue, Cleckheaton, West Yorkshire  
BD19 3AQ

---

Visit the trust website **[www.sharemat.org](http://www.sharemat.org)**