



Highworth  
Grammar School



# Job Application Pack

## Teacher of Design & Technology

**Required for September 2026**

March 2026

Maidstone Road, Ashford, Kent, TN24 8UD

# Our School Motto



Our school motto is: *Ad Caelestia Sequere... Reach for the stars*  
and so, Highworth aims to develop students who are:



**Reflective**, creative  
& innovative

**Eager** for life-long learning

**Aiming** to achieve their  
full potential

**Considerate**,  
confident, independent individuals

**Happy** in a caring,  
respectful community

Our motto of 'Reach for the Stars' embodies the daily working life of the whole school community; students are encouraged to see learning as a lifelong activity. A key feature of our motto is happiness which is achieved through excellent student behaviour in lessons; clear policies and guidance; strong leadership; and enthusiastic community spirit. It is important that both staff and students feel confident, happy and valued.



# Welcome

Highworth Grammar School combines a tradition of academic excellence with extensive pastoral support. The school has been educating students from the Ashford community for over a century and we are now a thriving school with over 1500 students and 140 staff. Students at Highworth love learning and are highly motivated. We care about our students and they care about each other which creates a happy and supportive learning environment.

Students at Highworth are given rewards for creativity, problem solving, achievement resilience and team work. We value the development of a full range of skills to offer students the best preparation for future challenges. Working here allows staff to share this balanced approach to education; embrace new ideas; and sustain a sense of enjoyment in their own learning.

Whilst the school is academic we recognise and fully support the creative aspects of the curriculum and are proud of the many opportunities provided for achievement in music, D&T, and the arts. We believe this is crucial in our ethos in encouraging our students to be independent, creative and highly motivated lifelong learners.

Our A Level and GCSE results and performance measure page can be accessed using this link:

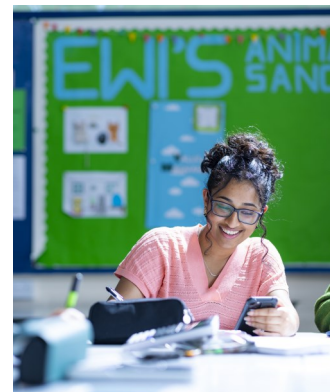
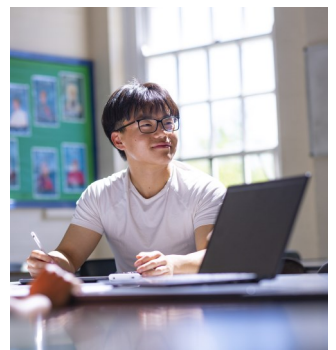
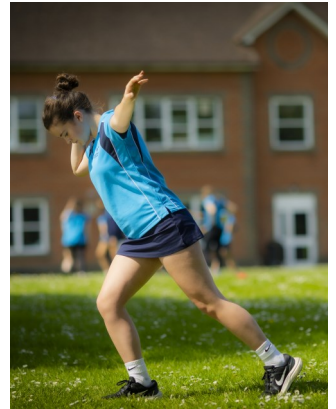
<https://www.find-school-performance-data.service.gov.uk/school/136379/highworth-grammar-school>

If you feel your outlook matches ours and you want to be part of a thriving school community, we would love to hear from you.

**Duncan Beer**  
**Headteacher**

# Features of the School

- Broad and balanced curriculum fully supporting a range of subjects
- Caring, supportive and committed staff
- Commitment to professional development
- High academic standards with a large proportion of outstanding lessons
- Vertical tutoring
- Regular Learning Community events
- Student representation on Governing Body
- Strong ethos of peer support and student leadership
- Large and vibrant Sixth Form
- Cloud storage and software provided by Google
- Laptop for every teacher
- 44 mobile laptop trolleys
- Purpose built sports hall
- 3 Performing Arts studios
- Music Technology suite and recording studio
- D&T suites with latest technology
- Research into use of new technologies/pedagogy
- Cover supervisors to minimise staff cover
- 10 day timetable with five one hour lessons per day. Current maximum teaching time for full time teachers is 45 out of 50 teaching periods



## **Students**

The school has a wide catchment area, taking students from over 40 primary schools, many of which are situated in small villages within the Kent countryside.

Entry at age 11 is by the Kent Education Committee Selection Procedure, which aims to identify the top 25% of the ability range.

Students also transfer to our school at 16+ from other schools. There are minimum entry requirements to join the school at Sixth Form

## **Staff**

We are fully committed to the professional development of all our staff.

All new teachers and ECTs follow a well informed and structured induction programme.

All staff are encouraged to pursue personal goals and the school fully embraces interest in pastoral and pedagogical innovation.

Every member of staff takes part in the annual performance development scheme which also embodies our motto of 'Reach for the Stars'.

# Job Description

## Design & Technology at Highworth

The department consists of 4 teachers and 1 dedicated technician. The subject is delivered in five well resourced rooms including a kitchen with adjoining teaching classroom for the delivery of Food Preparation and Nutrition. As well as standard work shop equipment the department has two laser cutters, one CNC router and 8 3D printers.

### Key Stage 3

Design and Technology is studied by all students in Years 7, 8 and 9, working towards Key Stage 3 of the National Curriculum. Students work in the specialist areas of Product Design – working in Resistant Materials, Textiles, CAD/CAM and Food Preparation and Nutrition. The subject is currently delivered on a rotational basis.

### Key Stage 4

Design and Technology has proved to be a popular subject at GCSE and consistently achieves excellent results. There are usually two to three groups with a total uptake of between 40 and 50 students. Students follow the AQA Design and Technology syllabus.

### Key Stage 5

At A Level students follow the AQA Design and Technology: Product Design syllabus. The A level is also popular with students and attracts a number of external students. Once again results have been excellent over the past few years with many students going on to study design related subjects at top universities or gaining places on prestigious apprenticeships. There is usually one class of between 15 to 20 students.

## Accountabilities

- To complete the tasks of the classroom teacher as set out in the School Teachers' Pay and Conditions document (extract attached for reference) having due regard for the school's aims and objectives, schemes of work/syllabi, and policies of the Governing Body.
- To work with the Head of Department to ensure students are taught to the highest standard.
- To undertake the duties of Mentor as directed by the Director of Learning and appropriate managers, when required.
- To share in the corporate responsibility for the wellbeing and discipline of all students.
- To take delegated responsibility for the implementation of the Health and Safety Act as may be agreed.
- To contribute to the school aims by providing activities that enrich the curriculum and the students' experience of learning.
- To support and implement all relevant aspects of the development plan and make a measurable contribution to whole school objectives.

## Performance Development:

All staff review the Highworth Green standards and Blue standards and personal targets in their annual Performance Review.

## Staff Development:

To assess development and training needs and discuss with Line Manager.

To keep personal records of all staff development activities in which you are/have been involved.

To carry out as requested from time to time any other relevant duties as may be reasonably required by the Headteacher.

Highworth is committed to creating a diverse workforce. We will consider all qualified applicants for employment without regard to sex, race, religion, belief, sexual orientation,, gender reassignment, pregnancy, maternity, age, disability, marriage or civil partnership.

The post holder will be required to: promote the health, safety and wellbeing of self and others; safeguard student and staff welfare; and follow school policies and the staff code of conduct.

# Person Specification



## **QUALIFICATIONS:**

- Good honours degree
- Qualified Teacher Status
- Evidence of further relevant professional development (n/a for ECT applications)

## **SKILLS:**

- Ability to lead, inspire, motivate and support students and colleagues
- Ability to work under pressure and meet deadlines
- Good ICT skills
- Ability to think strategically
- Ability to forge links with the wider community

## **EXPERIENCE:**

- Evidence of successful, inspiring and innovative teaching in the secondary phase (n/a for ECT applications)
- An excellent track record of success with public examination results (n/a for ECT applications)
- Co-ordinating and collaborating with colleagues
- Teaching Design & Technology to GCSE
- Teaching Design & Technology to A Level (desirable)
- Ability to teach other aspects of Design & Technology such as Food and Nutrition (desirable)

## **KNOWLEDGE:**

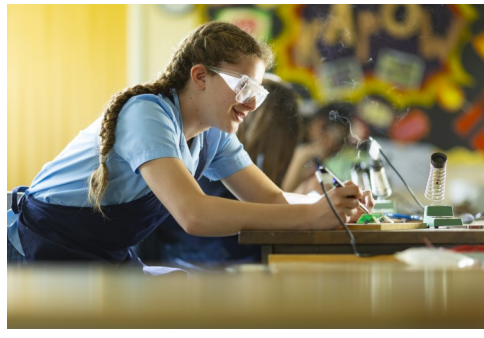
- Up to date knowledge of developments in pedagogical techniques relevant to Design & Technology
- Awareness, and practise of, best practice and research in teaching and learning, such as modeling, retrieval and scaffolding

## **PERSONAL QUALITIES:**

- High levels of personal and professional integrity
- Personal warmth to gain the confidence of students, staff and parents
- Appropriate levels of personal presentation
- Ability to communicate concisely and sensitively, both orally and in writing, to a variety of audiences
- A passion for teaching Design & Technology

## **ATTITUDES:**

- A willingness to share experiences and learn from colleagues
- A team player
- A commitment to child protection and safeguarding
- A reflective and flexible approach
- Positive, enthusiastic and energetic approach to teaching
- Ability to think creatively and imaginatively
- Supportive of the School's ethos
- High expectations of student attainment, personal development and conduct
- Commitment to professional development



# How to Apply



Applications are made online via our vacancy portal.

**We do not accept CVs.**

**Deadline for applications:** Tuesday 24th March 2026 at 8am

Applications will be considered in the order in which they are received. Suitable candidates may be interviewed before the closing date and Highworth Grammar School reserves the right to withdraw the position if an early appointment is made.

**Highworth Grammar School is committed to:**

*Safeguarding and promoting the welfare of young people*

This post will require an enhanced disclosure from the Disclosure & Barring Service (DBS).

*Creating a diverse workforce*

We will consider all qualified applicants for employment without regard to sex, race, religion, belief, sexual orientation, gender reassignment, pregnancy, maternity, age, disability, marriage or civil partnership.

**Safer Recruitment:**

In line with 'Keeping Children Safe in Education' recommendations, all candidates invited for interview will be required to complete a self-disclosure form and will be subject to an online search check.

