



Part of the
Ted Wragg TRUST

MAP Secondary

Teacher of English

At MAP, we have a clear and ambitious mission: to provide every student with the opportunity to get to and through university. By achieving this, we enable all students to excel in top careers and live the best lives. Our community is built on three core values that guide everything we do: Aim High, Be Kind and Dont give up



TABLE OF CONTENTS

• Key Details	1
• How to Apply	1
• About	2
• A Warm Welcome from our CEO	3
• Job Description	4
• Person Specification	5
• #lifeattedwragg	6
• The Ted Wragg Institute	7
• Our Ted Wragg Standard	8
• Our Benefits	9
• Our Trust Journey	10



Key Details

Salary

MPS/UPS

Location

MAP Secondary

Hours

32.5

Interviews

ASAP

Closing date

Monday 2nd March 2026

Required from

Sept 2026

At MAP, we have a clear and ambitious mission: to provide every student with the opportunity to get to and through university. By achieving this, we enable all students to excel in top careers and live the best lives. Our community is built on three core values that guide everything we do: Aim High, Be Kind and Dont give up

How to apply

For an informal conversation about the position please contact SLT Admin at sltadmin@marineacademy.org.uk

An application pack can be found at <https://www.tedwraggtrust.co.uk/vacancy> or click on the apply now button



The Ted Wragg Trust is committed to safeguarding and promoting the welfare of children and expects all staff and volunteers to share this commitment. All offers of employment are subject to an Enhanced DBS check.



About MAP Secondary



Welcome from the Principal

Thank you for your interest in joining our community at this exciting time in the journey of our school. Driven by our passion for social justice, we are incredibly proud to have recently been rated 'Good' by Ofsted, and are now striving to become a beacon of national excellence, eager to redefine what is possible in education. Our mission is ambitious yet clear: to provide every student with the opportunity to get to and through university. By achieving this, we empower our students to excel in top careers and live the best possible lives.

To work here, you must believe in the importance of setting the highest expectations for both student behaviour and academic achievement. We believe that exceptional conduct is crucial to maintaining a safe and happy environment for all and we support our teachers in delivering an unashamedly academic curriculum, where they teach as the subject experts in a calm, purposeful environment. Equally, we believe that joy and community are just as crucial to our school culture. We encourage all staff to create warm, positive relationships and bring moments of joy to students. Our innovative rewards and celebration systems go above and beyond those of other schools, ensuring that students feel valued and recognised for their achievements. This balance of high expectations and a joyful, supportive atmosphere helps our students reach their full potential while building a strong, connected community.

At our school, we believe that the well-being of our staff is fundamental to our success. That's why we are committed to enabling a healthy work-life balance and providing ongoing professional development for all staff, at every level and in every role. We deeply value the contributions of every member of our team, knowing that a culture of collaboration is essential to ensuring our academy continues to improve and evolve. You will also benefit from being part of the Ted Wragg Trust, an ambitious and inclusive family of schools that shares our belief in the transformative power of education. Being a part of this network enables us to collaborate with some of the best leaders, teachers, and communities, further enriching our educational environment and enhancing the opportunities available to both staff and students.

If you share our vision and are passionate about making a real difference in the lives of young people, we would be delighted to welcome you to our school.

Warmest Regards,

Jen Brimming
Principal



A Warm Welcome from our CEO



An ambitious and inclusive Trust of schools strengthening
our communities through excellent education.



Moira Marder, OBE

On behalf of the Ted Wragg Trust, I would like to thank you for your interest in working for our Trust. This is an excellent opportunity to join our Trust and work in one of our 17 schools.

In our **ambitious** and **inclusive** Trust of schools we know that every individual is critical to help us to achieve our collective mission to **transform lives, strengthen communities** and **make the world a better place**.

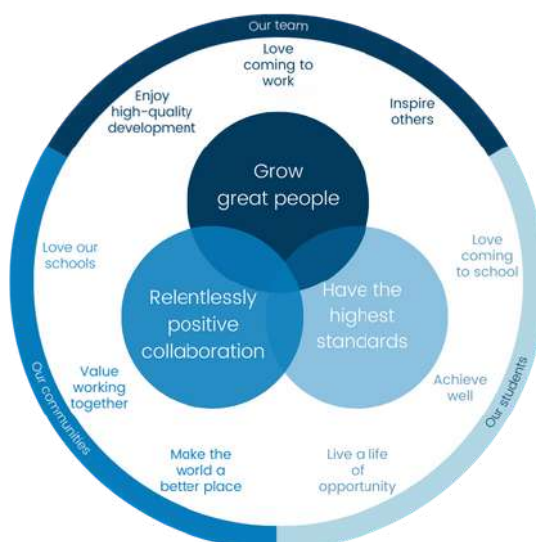
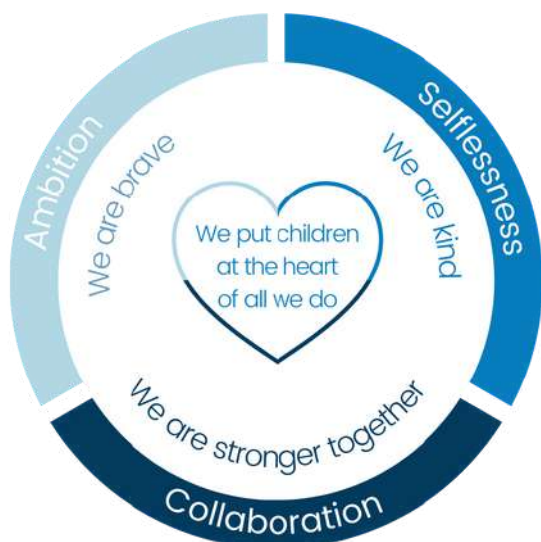
Our values driven, growing 2-18 Trust, has the highest expectations for every child, every day, with social justice at our core. In this pack you will find out more about how we **support, develop** and **grow our Headteachers**.

This is a hugely exciting time for our Trust as we continue to grow, embed, improve and innovate to **improve the life chances of all children** in the South West.



We demonstrate our love
through our values

How we will succeed



Job Description

Teacher of English

Job Description

Key purpose of the role

Enable the Trust to realise its mission to 'Transform lives, strengthen communities and make the world a better place by providing high calibre teaching and learning environment, challenging the educational and social disadvantage in the South West.

Your responsibilities

- Live our mission and values every day
- Promote safeguarding policies and procedures to protect students maintaining a culture in which students are protected and achieve the best outcomes
- Meet Teachers' Standards and pursue continuous professional development
- Prepare, deliver, and review effective lessons in accordance with schemes of work and our Trust learning model
- Reflect on your own lessons, curriculum resources and interactions with all students and stakeholders to find areas for continued improvement
- Use adaptive teaching to meet diverse student needs and maximize potential
- Foster a positive, safe, and inclusive classroom environment, ensuring that your work is equitable and values the diversity and experience of the whole school community
- Implement strategies for high standards of behaviour and attendance
- Complete assessment, recording and reporting procedures.
- Participate in great management meetings, coaching, and external quality assurance.
- Participate in at least fortnightly coaching
- Fully understand and implement all exam requirements
- Support students with pastoral responsibilities and enrichment activities
- Carry out any other reasonable duties as requested by Headteacher or Line Manager

Your key objectives

To support students to:

- Love coming to school
- Achieve well
- Live a life of opportunity

To support colleagues to:

- Love coming to work
- Build high quality professional relationships with Trust networks
- Inspire others

To support communities to:

- Love our schools
- Value working together
- Make the world a better place

Person Specification

Person Specification

Qualifications	• Qualified Teacher Status	Essential
	• Good <u>honours</u> degree	Essential
	• Further CPD or relevant qualifications	Desirable
Experience	• Strong teaching ability – demonstrated through previous experiences	Essential
	• Track record of excellent outcomes	Desirable
	• Working in areas or school communities with high levels of SEND and/or deprivation	Desirable
Key skills	• Able to fulfil all aspects of the role with confidence and fluency in English	Essential
	• Excellent subject and relevant curriculum knowledge	Essential
	• Meeting and effectively delivery of all the teaching standards.	Essential
	• Effective use of formative assessment	Essential
	• Adaptive teaching that challenges and supports all students	Essential
	• Ability to receive and act on feedback	Essential
	• Commitment to safeguarding	Essential
	• Desire to develop yourself	Essential

Values

- **Ambitious:** works hard, has the highest standards and is positive for the future
- **Selfless:** self-aware and emotionally intelligent to support self and others to thrive
- **Collaborative:** builds strong relationships and networks



#lifeattedwragg

We know that our people are our **greatest asset** and research tells us that happiness at work is directly linked to student happiness and consequently **student outcomes**.

We are working hard to make sure that all our employees **love coming to work**.



Our Trust is dedicated to fostering an environment where employees can **reach their full potential, with dignity, respect, and equal opportunities for all**.

We value the unique contributions of each individual, recognising that **diversity strengthens our community and makes our Trust a positive place to work and grow**.

We are committed to excellent employment practices that attract and retain talent from a variety of backgrounds and communities.

The aim of our people strategy is to be the **greatest place to work in the South West**.

We know that to realise our ambitious aim we must **welcome, retain and develop our great people** who work day in day out to **transform the lives of the children in our Trust**.



#lifeattedwragg is focussed on ensuring all our employees:

- **Love coming to work** and have a strong sense of belonging
- **Experience high quality development** through our dedicated development curriculums delivered by the Ted Wragg Institute
- **Inspire others** with their open and collaborative approach

To find out more about what it is like to work at the Ted Wragg Trust, explore our development curriculums and hear from our employees please visit our website at www.tedwraggtrust.co.uk/workwithus



The Ted Wragg Institute



We want to ensure that our people feel **invested** and **fulfilled in their role** by providing personalised, relevant and engaging professional development. Our brand-new **Ted Wragg Institute** (TWI) delivers our **high-quality development** offer for all, across our family of schools.

Our incredible offer includes Trust CDP, Leadership Development, Networks, Cohort-specific training and NPQs. Take a look at our offer this year here.

Early Career Teachers

If you are an Early Career Teacher you will benefit from our tailored Early Career Framework combining weekly instructional coaching, asynchronous independent learning, online 'clinics' and in-person conferences. With a dedicated mentor or coach and access to supportive networks the ECTs in our Trust are supported and developed to reach their full potential.

Our professional development delivery model

Our professional development delivery is underpinned by our Education key concept (see page 8). We believe that professional development should build knowledge, motivate, develop techniques and embed practice.

At the Ted Wragg Trust, we are research informed and believe that it is important that everyone involved in sharing ideas understands the underlying rationale and evidence base. We ensure that professional development is:



Sustained

Frequency is critical,
not time span



Practice-Based

Create new habits



Domain-Specific

Create new habits



External Expertise

Challenge the familiar
& refresh ideas



Professional Buy-In

Purpose & benefits
eclipse volunteering

We believe this slightly adapted model from 'Teaching Walkthrus 2', Tom Sherrington and Oliver Caviglioli is applicable to all professional development and will underpin the delivery of all our professional development networks, seminars and webinars.



Our Ted Wragg Standard



Our Ted Wragg Standard provides a **minimum set of high standards** across all our schools to establish clear structures, implement effective processes and hold each other to account **to enable excellence**. It is based on our three key concepts: Leadership, Education and Every Child Succeeds.

Key Concept: Leadership



We believe that great leadership:



Fiercely educates



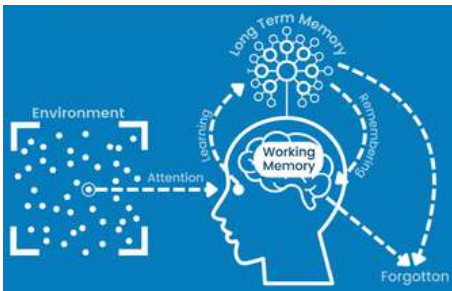
Thrives in a complex system



Is locally enabled

Key Concept: Education

We have a clearly defined and articulated learning model that is understood by all teaching staff. This model of the learning process uses the concepts of Working Memory and Long-Term Memory. It draws on ideas from Cognitive Load Theory and the work of Daniel Willingham.

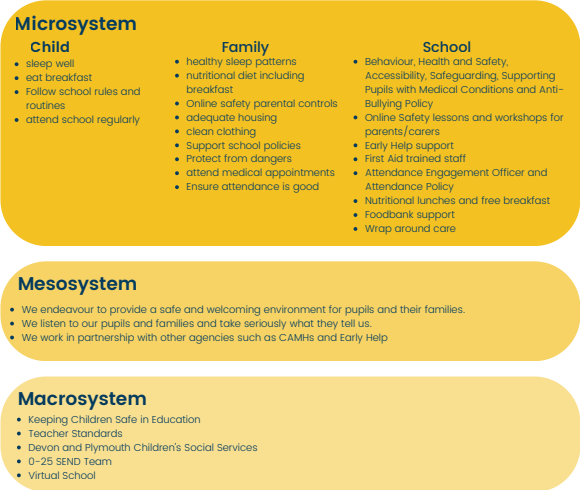


Key Concept: Every Child Succeeds



We believe individual development is well explained using Maslow; that an individual grows in an ecosystem and can be interpreted using Bronfenbrenner's work, and that we are interdependent.

We believe that to enable our children to live a life of opportunity, we need to understand what true inclusion means. To us, our model is based on Maslow's hierarchy of needs and the Bronfenbrenner's ecology of inclusive education.



Our Benefits

A critical part of our People Strategy is to ensure that we welcome and retain our great employees and ensure that they are supported both at home and at work.

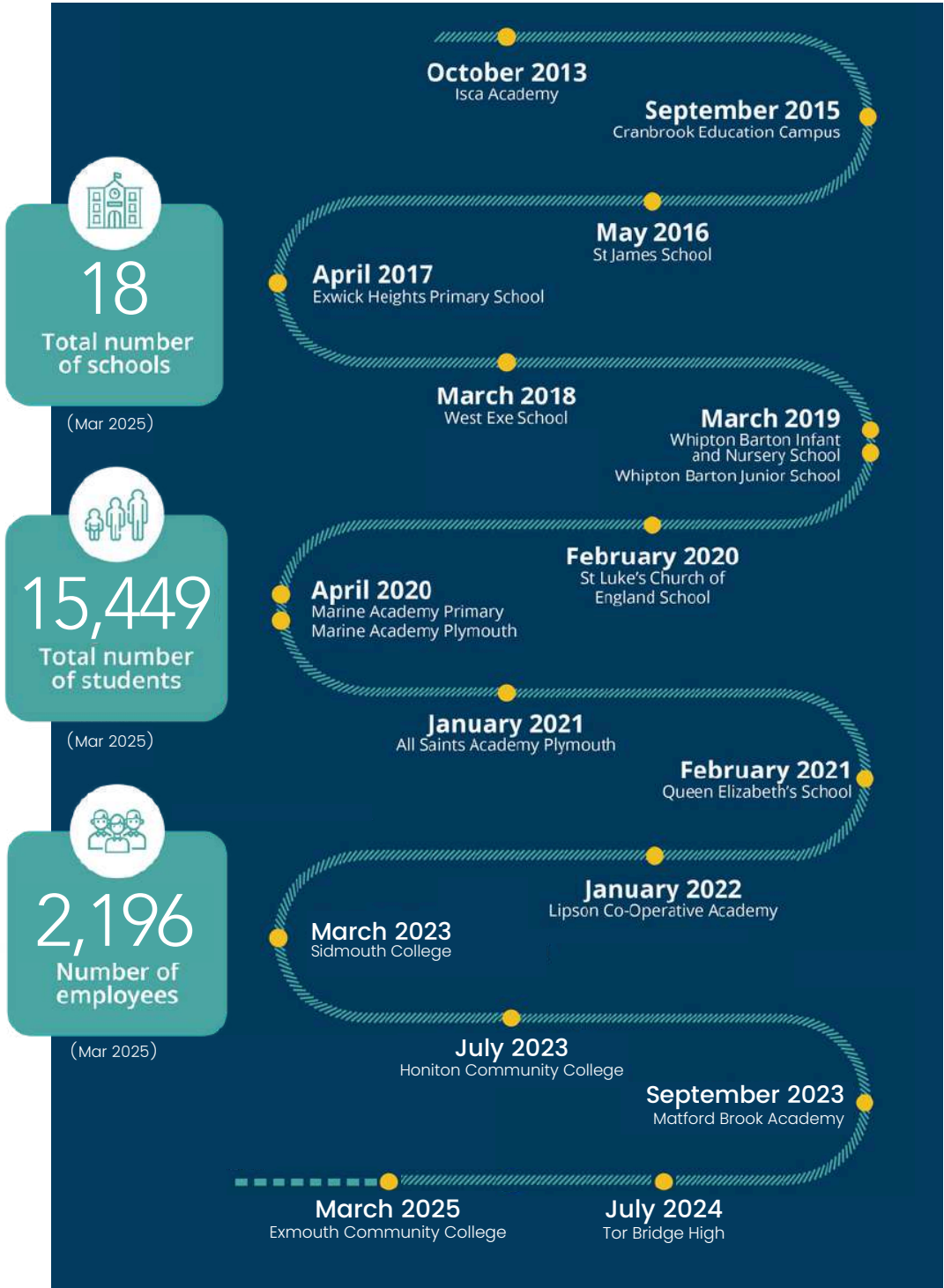
When you join our Ted Wragg family we are here for you every step of the way. Here are some of the benefits we offer:



Our Trust Journey



Professor Ted Wragg, in whose memory the Ted Wragg Trust is named, was passionate about how education can transform young people's futures.





Part of the
Ted Wragg TRUST

Thank you for your
interest in working for
us!

