



Teacher of English

Bottisham Village College

Candidate Information Pack



Contents

Page 2	Welcome from Chief Executive Officer
Page 3	Anglian Learning, a unique multi academy trust
Page 5	Bottisham Village College – about us
Page 10	The vacancy
Page 12	Job Description
Page 15	Person specification

Welcome from the Chief Executive Officer

Thank you for your interest in the position of Teacher of English at Bottisham Village College, part of Anglian Learning.

We are an ambitious, outward looking school trust consisting of six secondary schools and ten primary schools, the latest to join our community being Wimbish Primary Academy in September 2023. While each of our academies retains very clearly their own identity and ethos, we are collectively passionate in our belief that all young people deserve to have access to an outstanding education, and which crucially enables them to thrive in the local, national, and global communities in which they live.

Anglian Learning has been founded on strong collaborative and trusting relationships, where everybody is committed to sharing their successes, but equally open to new ideas and alternative perspectives. We also firmly believe that our most important resource is our people, and if you apply and are successful in your application, we promise to develop and support you in your career, as well as providing a caring, friendly environment in which to work.

For an informal discussion regarding this role, please contact the HR team on hr@bottishamvc.org

I hope that you find the following information useful. If you wish to visit our school or make an application for this vacancy, please see contact information within.

We look forward to hearing from you.

Yours sincerely



Jonathan Culpin
Chief Executive Officer



Anglian Learning

Our mission is to build an innovative partnership of academies that excites, inspires, and empowers our people – pupils, staff, and the community in which we work - to be the very best they can be, to have the confidence to think creatively, and embrace new challenges. Through this we will seek to support and inspire our young people to be dynamic learners who will live, grow, and thrive in the local, national, and global community in which they live and will work.

Currently, the Trust educates more than 8000 pupils and employs over 1000 members of staff in 16 schools across three counties, with a 17th school due to open in the near future. Several of our schools provide adult education opportunities, reflecting our commitment to lifelong learning and we also operate our own sport centres, under the banner of Anglian Leisure. We are recent winners of the NGA Outstanding Governance Award; have a unique partnership with Arts Council England, reflecting our commitment to arts education; and are one of the eight National Creativity Collaborative pilot hubs. We are strategic partners in the local teaching school hub, working closely to provide with other trusts to provide professional qualifications in addition to own very extensive professional learning programmes.

We provide school improvement support to our schools, alongside finance, human resources, ICT, and estates support. Many of our leaders, teachers, and professional services staff are involved in networks across the Trust to share best practice and build skills and knowledge, with some taking on cross-trust leadership positions.

Our most recent staff survey indicated that a high proportion of staff:

- ✓ Feel as though they belong within Anglian Learning
- ✓ Agree that they are provided with relevant opportunities for professional development
- ✓ Feel that there is a positive culture of psychological safety within their school
- ✓ Have high levels of job satisfaction and happiness at work
- ✓ Would recommend our organisation as a great place to work
- ✓ Almost all staff who responded to the survey feel part a team within their school and can rely on colleagues for support when needed.

The core Vision of Anglian Learning is to enable:

Dynamic, empowered learners who thrive and lead in their communities: locally, nationally, and globally.

Our four core values and principles guide our work to achieve our vision:



Aspiration

We are ambitious for ourselves and all those in our community to be the best we can be



Community

We underpin our relationships with a culture of support, respect and trust, recognising we are stronger together



Empowerment

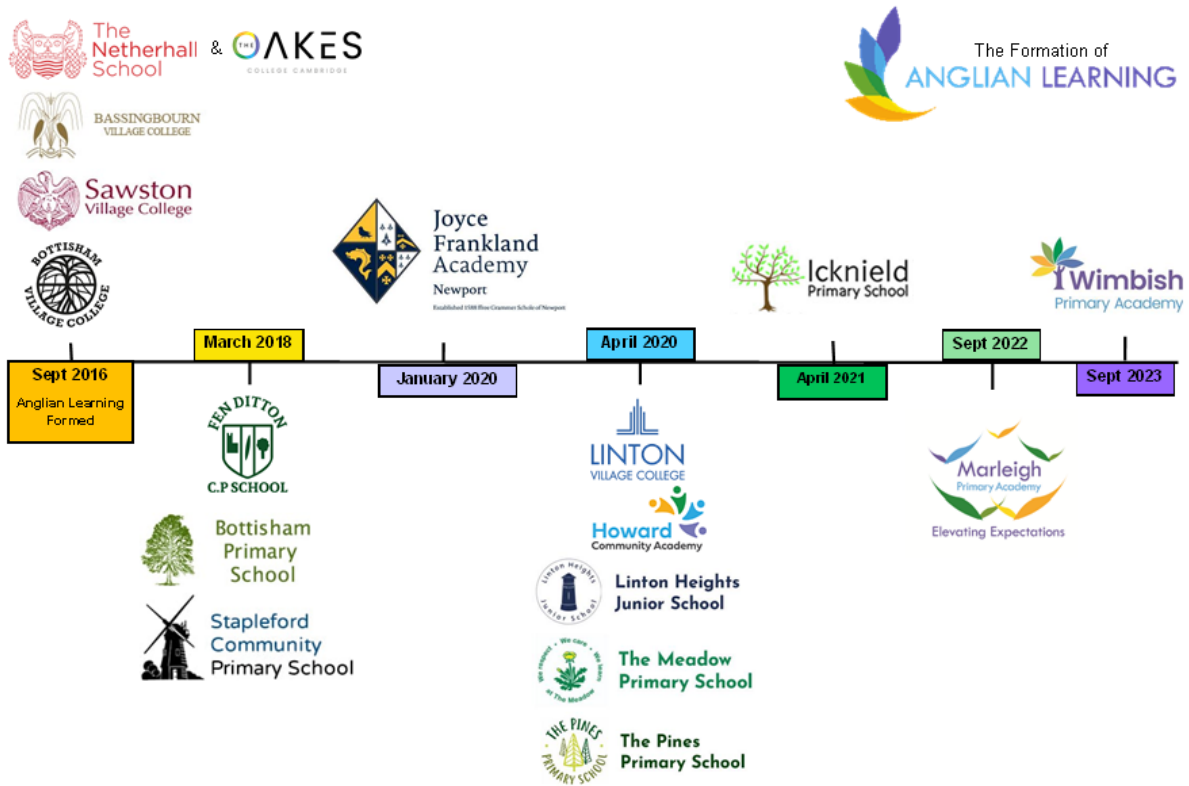
We enable our academies, staff and learners to embrace new ideas and think creatively



Inclusivity

We believe in equality of opportunity, celebrating everyone's differences and supporting learners of all abilities from all backgrounds

This is our Anglian Learning community. It is an exciting time to join our growing Trust.



We are committed to providing outstanding academies which are a source of pride for the communities that they serve.

We aim to achieve this by raising the educational attainment of all our young people and using the collective energy and cross-school educational fertilisation within the Trust to improve life chances by:

- Developing a dynamic and inspirational culture for teaching and learning excellence.
- Providing pupils with stimulating and valuable enrichment opportunities across the curriculum.
- Building a curriculum and assessment structure that will enable teachers, pupils, and parents to celebrate success and respond swiftly to challenge.
- Encouraging innovation and risk-taking through a focus on research and best practice locally, nationally, and internationally.
- Promoting, enabling, and supporting leadership at all levels to flourish in individual schools and across the Trust.
- Providing high quality professional learning opportunities for staff at all levels in the Trust

About Bottisham Village College

We are a highly-ambitious, highly-innovative and over-subscribed comprehensive school, based in the heart of rural East Cambridgeshire and we take great pride in our vision: to inspire, to care for and to enrich the lives of every student within our community. The pupil admission number is 300 for September 2022 and last year we received 455 applications of which 281 were first preference, meaning we are currently a school of 1410 students.



We are committed to providing an outstanding education to all of our students, enabling them to develop into mature, independent young people, ready to take their place in society.

In addition to our academic rigour, our relationship-driven approach permeates throughout all aspects of college life, from the maths classroom to the sports field, from the music room to the ICT suite and from the library to the auditorium, this is a college where we recognise the transformative power of positive relationships. Students will only succeed if they are happy and we make every effort to achieve this. Further information about us can be found here <https://bottishamvc.org/about-us-2/ethos-cultural-values/>



The College was opened in 1937 as the second of the Cambridgeshire Village Colleges. These were the forerunners of community education in this country and are still committed to lifelong learning in its widest sense. The vision of their founder, Henry Morris, was that schools should be at the heart of their communities, open to all and that they should offer an attractive and stimulating environment for learning. This vision still resonates today.

The college is a focal point for village life and a community ethos: a comprehensive adult education programme, a community sports centre and extensive provision for the arts and physical education as well as a well developed enrichment programme for all. In essence, the facilities, open 364 days a year, are the gateway to connecting all our catchment communities. Our adult learning courses run during the week, offering a rich selection of education for our wider community, from Maths GCSE to Level 2 qualifications in Horticulture. Additionally, our sports facilities help grow sport at grass roots level, with swimming clubs and FA affiliated football clubs all benefitting. Importantly, the college's commitment to the on-site charity "Red to Green" is evident. Working with adults with disabilities and special needs, the college provides the supportive framework for this important community work to take place.

Having undergone significant development since 2018, our new resources are best exemplified by the new "Morris Wing": auditorium, dance studio, modern bright classrooms and a spacious dining hall. In the same way, our new library, ICT suites, conference spaces

and reception area are symbolic of a college embracing the future and providing for its community.



As our college grows, we shall never lose sight of the Henry Morris ideal: community is at the heart of all we do.

Our Staff

We recognise and value the skills, knowledge and expertise of all our staff.

We are committed to supporting the professional development of all members of staff. To this end, we have a varied Continual Professional Development programme, which is personalised each year to support both our main college priorities and the individual needs of staff. This programme includes opportunities to share excellent practice between colleagues across the Trust as well as drawing on external expertise. Colleagues with management responsibilities are given appropriate time within their timetable to fulfil these duties, and ECTs have a reduced timetable in order to support them in their early stages of their career. The Trust's network of leaders and schools will be able to support you with a range of opportunities and enhancements. We are equally keen to nurture, grow and celebrate teachers who are willing to share effective pedagogy and practice to support their colleagues.

Our staff-room is a vibrant, sociable and supportive atmosphere and we encourage all staff to come together when possible to build relationships across faculties. We enjoy College events such as staff socials, sporting events (eg charity sports matches) and concerts.

Staff give freely of their time to the broad extra-curricular programme which includes sports, music, drama and a host of trips, exchanges, clubs and other activities. There is a blend of youth and experience among the staff and newcomers have always commented on the warm welcome they have received.



Our Students

Our catchment area is one of rich contrasts: areas of social deprivation on the fringes of Cambridge, rural communities, some very isolated, areas connected with the stables at Newmarket and pockets of expensive housing in some villages. We have a truly

comprehensive intake in every sense, and the inclusive ethos of the College means that we are able to form very positive relationships with them all. We are absolutely committed to supporting each individual student; we want them to feel safe, in an environment where they can grow and thrive and leave us confident in their ability to play a meaningful role in society, as global citizens.

We are very keen to offer students every opportunity to take responsibility; the mentor scheme and the School Council, for example, are strengths of the College. Visitors, including OFSTED Inspectors, are always impressed by the courtesy and confidence of our students and their friendly, open nature. The Student Leadership Team plays a significant role in the life of the College.

Working in Partnership with Parents and Carers

Parents and carers are very supportive and keen to attend information evenings, school plays and so on. They support the aims of the College and the vast majority send their children to school in correct uniform and with the proper equipment, ready to learn.

The 'Friends of the College' is our excellent PTA, but it is more than that, because it also has an extensive community role.

It is very difficult to sum up Bottisham Village College in a few pages. Check out our [website](#), [twitter](#), [Instagram](#) and [facebook](#) pages to help bring the school to life or even better [contact us](#) to organise a visit!



THE ENGLISH FACULTY

The English Faculty at Bottisham is a vibrant and friendly and forward-thinking team; we work together to share resources and teaching ideas. Our role is very clear: enthuse and engage students in the subject so that they can achieve and surpass their goals. The college's 2012 OFSTED inspection stated that teaching is exceptionally strong within our faculty. It is our commitment that there is excellent practise in every lesson. As we know, this only happens in an environment that is both collaborative, supportive and inclusive on every level.

Committed and Experienced Team

Our faculty has a supportive team approach where resources are shared, and new ideas and initiatives are developed and implemented together. You will join a strong team with a range of skills and experiences, with teachers ranging from Deputy and Assistant Principals to ECTs. Some of our faculty have other teaching and learning responsibilities, such as pastoral Assistant Head of Learning (year) and involvement in mentoring for ITT and ECTs. We are also supported by a team of Teaching Assistants and our dedicated Librarian, who runs the library and supports both with lessons in the library and whole-school reading initiatives.

High Standards

Our English faculty prides itself on being a team that supports one another and collaborates effectively in our shared goal of providing our students with an experience in English that embodies the school ethos: *Inspiring, Caring, and Enriching*. **Inspiring** every student to engage with and read a variety of different texts; supporting our students to be thoughtful, compassionate, **caring** individuals by exploring and discussing the social and moral questions that the study of Literature raises; and **enriching** every student's whole school experience through a range of extracurricular opportunities including clubs, author visits and trips.

Strong Curriculum Provision

We regularly evaluate our curriculum provision, developing new practices and resources to engage students and enhance their progress. We have comprehensive schemes of work and accompanying resources that are shared electronically. Recently, we have completed some work on curriculum cohesion and sequencing, introduced a learning journey for each unit that, not only guides students through the learning journey, but also enables them to understand how to articulate their learning. We have also designed a new moderation booklet to support with marking at KS3 to ensure consistency across all staff.

Years 7, 8 & 9 are taught in mixed ability classes and have 4 100 min lessons per fortnight. Years 10 & 11 are set in ability groups and these students are taught for 5 100 min lessons per fortnight.

We also aim for all KS3 students to have a 50 min library lesson once every two-week cycle.

At GCSE, we follow the AQA specifications for both Language and Literature. All students are entered for both English Language and Literature GCSEs. All classes follow a carefully planned outline of study, catering for the new 100% examination assessment model.

We have established schemes of work for all year groups which deliver the requirements of the National Curriculum whilst emphasising the importance of individual reading and personal response. Long term plans outline termly and half-termly programmes of study for both KS3 and 4.

Intervention Practices

Students entering Year 7 below level 4 attend English lessons alongside their peers but are also supported by Learning Support to ensure that these students receive interventions to enable them to achieve a level 4 by the end of year 7. Some Year 8 students have KS4 reading mentors that work with them during registration time. Underachieving students in KS3 benefit from 1-2-1 tuition; borderline 3/4 KS4 students also receive additional 1-2-1 or small group provision normally led by staff from the TA team.

Good Facilities and Resources

Our faculty is located over 2 floors, and the 10 classrooms are well-equipped rooms with Smart boards and integrated audio/visual equipment. We have recently installed new screens in eight of the English classrooms that allow use to interact with the ipads. There is also access to a large bookable space for drama performances, ICT rooms and break out rooms for small group work.

Each teacher has a laptop and an iPad with wireless internet connection. The College has several ICT rooms with broadband Internet connection; these can be used by English classes. There is an outstanding College library with 10 computers. We hold an extensive range of

fiction and non-fiction texts. We have a wide range of children's literature within the faculty and regularly update our stock with new fiction texts.

A Rich Language Environment

There is a very vibrant and well-attended debating society where students from all Year groups debate together. This is run on a weekly basis after-school by English teachers and some of the students. As a result, students have had the opportunity to attend debating competitions at the Houses of Parliament. There are also other opportunities for enrichment with students participating in Debate-Mate run through Cambridge University and a variety of other debating opportunities.

We also have a very well attended creative writing group who meet one lunchtime a week. We encourage students to enter their work into competitions and some students have been successful in having work published. Recently, we have introduced a linguistics club as well. We encourage theatre visits, poetry competitions and a wider audience for students' work through attractive displays. We also invite a range of authors to speak to students across the year. Extra-curricular classes for GCSE revision are held at different times across the year and a series of KS3 masterclasses are held in the summer term. The English team are encouraged to cover a range of topics in the masterclasses, related to English, but are not necessarily linked to our curriculum.

Extra Links

We have always enjoyed our involvement with the Cambridge University Faculty of Education's Initial Teacher Training partnership; we have trainees each term. We also support teachers completing the SKITT programme through Anglian Learning. We have strong links with our feeder Primary schools and develop transition work each year as well as working alongside our other trust schools.

Testimonials

The following are from two of our current English teachers who both joined us in their 1st year of teaching.

"During my time at Bottisham Village College I have felt thoroughly supported as an Early Careers Teacher. Throughout the induction I felt welcomed, and the process was informative. From the first day, the school community has made me feel that I was a member of the team. I have felt respected in the same way as my colleagues however with the additional consideration of the support I might need as an Early Career Teacher."

"I have felt very supported throughout my time at Bottisham Village College. During my NQT year I found my department, especially my mentor, incredibly welcoming. I knew that I could approach anybody for support, even if they were not in a specific 'mentor' role. This support has continued into my RQT year and has been invaluable, especially as both my training year and NQT year were disrupted by the COVID-19 lockdowns. I have always found the whole school incredibly welcoming and friendly, and the support has helped me feel secure in my teaching and future career."

This year, I have had the opportunity of a TLR role which is closely aligned to my interests and linked to skills which I gained in my career before teaching. I feel that my career aspirations are listened to and that there are huge opportunities here at Bottisham in terms of career development."



Teacher of English

Full or part time actively considered – starting Easter 2025

(Or Feb half term if available)

Suitable for ECTs

Anglian Learning is a high-performing multi-academy trust responsible for 15 schools in West Suffolk, Cambridgeshire, and Essex, educating over 8,000 pupils and employing more than 1000 staff.

Our vision is for dynamic, empowered learners who thrive and lead in their communities: locally, nationally, and globally. Our schools are at the heart of their communities and as well as providing a broad, rich, and vibrant curriculum to pupils they also provide sporting, community education and other facilities and opportunities to their local community.

We're committed to making Anglian Learning a place where everyone feels valued and has equal access to the opportunities our Trust offers. We are always open to discussing flexible working opportunities or making adjustments to ensure you thrive in your role with us.

As a result of the changes to the UK immigration rules which came into effect on 1 January 2021, Anglian Learning will offer sponsorship for a skilled worker visa under the points-based system, where a role has been deemed to be business critical'. Do contact us to discuss further.

The Vacancy:

We are looking to appoint a qualified and ambitious teacher to join our English faculty, teaching KS 3 and 4. As well as brilliant subject knowledge, you will need to be passionate about teaching and committed to continuous professional development.

We can offer you a collaborative and supportive environment with a key focus on your own development: a wide range of professional learning and CPD opportunities are available both within the school and across the Trust.

ECT's are given a wide range of support, with access to professional development sessions, observation opportunities both inside and outside of the faculty, as well as group planning to support their development as educators. ECT mentors are trained in coaching techniques to ensure ECT's develop their teaching practice effectively, with a key focus on independence and autonomy over their targets and development objectives.

Employee Benefits

Anglian Learning offers the following benefits to staff.

- Generous Pension Scheme –Teachers Pension
- Employee Assistance Programme via Health Assured

- Free membership to all [Anglian Leisure](#)'s Sports Centres - Bassingbourn, Bottisham, Sawston, Joyce Frankland, Linton and Netherhall
- 20% Discount on Adult Education Classes run by Anglian Learning Schools
- Cycle To Work Salary Sacrifice Scheme
- Discounted Eye Care Vouchers
- Annual Flu Jab Vouchers
- Perkbox
- Investment in Personal Development

Application

Please submit your application online: Please submit your application online
https://ce0976li.webitrent.com/ce0976li_webrecruitment/wrd/run/ETREC179GF.open?WVID=612290007I

The online application process will give you the opportunity to provide a statement outlining how your key skills and experience will enable you to succeed in this role.

Please note that due to our Safer Recruitment procedures, CVs will not be accepted and only fully completed online applications can be considered.

Closing date for applications: **Midnight, Sunday 24 November**
 Interview date: **TBC**

** We reserve the right to close this advert prior to the publicised closing date should we receive a high volume of suitable applications. Applications may be reviewed as received so please apply without delay to avoid disappointment – strong candidates may be contacted to arrange an interview before the closing date.*

*Anglian Learning is committed to safeguarding and promoting the welfare of young people and vulnerable adults. We expect all staff to share this commitment and undergo appropriate checks. Therefore, all posts within the Trust are subject to robust pre-employment checks including but not limited to an enhanced Disclosure and Barring Service check and online checks. Certificate of Good Conduct and other applicable checks may be requested. This post is exempt from the Rehabilitation of Offenders Act. Our policies for Ex-Offenders, GDPR, Safeguarding and Recruitment can be found on our website: www.anglianlearning.org
 We value diversity and welcome applications from all, including those with protected characteristics under the Equality Act. Flexible working will be considered for all roles deemed suitable.*





Class Teacher – Job Description

Salary	MPS
Disclosure Level	Enhanced DBS
Location	Bottisham Village College
Responsible to	Head of English

In accordance with the school's policies and under the direction of the Principal:

Teach

Having regard to the curriculum for the school, and with a view to promoting the development of the abilities and aptitudes of the students in any class or group assigned to you:

- 1 Plan and prepare courses and lessons
- 2 Teach, according to their educational needs, the students assigned to you
- 3 Set and mark work to be carried out by the pupil in school and elsewhere
- 4 Assess, record and report on the development, progress and attainment of students

Other activities

- 5 Promote the general progress and well-being of individual students and of any class or group of students assigned to you
- 6 Provide guidance and advice to students on educational and social matters and, where appropriate, on their further education and future careers, include information about sources of more expert advice on specific questions; make relevant records and reports
- 7 Make records of and reports on the personal and social needs of students
- 8 Communicate and consult with the parents of students
- 9 Communicate and co-operate with persons or bodies outside the school and
- 10 Participate in meetings arranged for any of the purposes described above

Assessments and reports

- 11 Provide or contribute to oral and written assessments, reports and references relating to individual students and groups of students

Appraisal or review of performance

- 12 Participate in arrangements made in accordance with the 2002 Regulations or the 2006 Regulations for the appraisal or review of your performance and that of other teachers

Review, induction, further train and development

- 13 Review from time to time your methods of teaching and programmes of work

- 14 Participate in arrangements for your further training and professional development as a teacher including undertaking training and professional development which aims to meet needs identified in planning and review statements

Educational methods

- 15 Advise and co-operate with the head teacher and other teachers on the preparation and development of courses of study, teaching materials, teaching programmes, methods of teaching and assessment and pastoral arrangements;

Discipline, health and safety

- 16 Maintain good order and discipline among the students and safeguard their health and safety both when they are authorised to be on the school premises and when they are engaged in authorised school activities elsewhere;

Staff meetings

- 17 Participate in meetings at the school which relate to the curriculum for the school or the administration or organisation of the school, including pastoral arrangements;

Cover

- 18 To supervise, and so far as is practicable teach any students, whose teacher is not available to teach them (you will not be required to provide such cover for more than 38 hours in any school year).

External examinations

- 19 Participate in arrangements for prepare students for external examinations, assess students for the purposes of such examinations and record and report such assessments; and participate in arrangements for students presentation for, and conduct, such examinations;(you are not required routinely to participate in any arrangements that do not call for the exercise of a teacher's professional skills and judgement, such as invigilation)

Management

- 20 Contribute to the selection for appointment and professional development of other teachers and support staff, include the induction and assessment of new teachers and teachers serving induction periods
- 21 Assist the head teacher in carry out threshold assessments of other teachers for whom you have management responsibility;
- 22 Co-ordinate or manage the work of other staff; and
- 23 Take such part as may be required of you in the review, development and management of activities relate to the curriculum, organisation and pastoral functions of the school;

Administration

- 24 Participate in administrative and organisational tasks related to such duties as are described above, include the direction or supervision of persons provide support for the teachers in the school; and
- 25 Attend assemblies, register the attendance of students and supervise students, whether these duties are to be performed before, during or after school sessions.
- 26 You are not required routinely to undertake tasks of a clerical or administrative nature which do not call for the exercise of a teacher's professional skills and judgment.

Management time

- 27 A teacher with leadership or management responsibilities shall be entitled, so far as is reasonably practicable, to a reasonable amount of time during school sessions for the purpose of discharge those responsibilities.

*Anglian Learning is committed to safeguarding and promoting the welfare of young people and vulnerable adults. We expect all staff to share this commitment and undergo appropriate checks. Therefore, all posts within the Trust are subject to robust pre-employment checks including but not limited to an enhanced Disclosure and Barring Service check and online checks. Certificate of Good Conduct and other applicable checks may be requested. This post is exempt from the Rehabilitation of Offenders Act. Our policies for Ex-Offenders, GDPR, Safeguarding and Recruitment can be found on our website: www.anglianlearning.org
We value diversity and welcome applications from all, including those with protected characteristics under the Equality Act. Flexible working will be considered for all roles deemed suitable.*



Class Teacher - Person Specification

This specification is informed by the TDA Professional Standards for Teachers

	Essential	Desirable
Experience	<ul style="list-style-type: none"> • Successful teaching experience during ITT placements and/or as a fully qualified teacher 	
Skills, Knowledge, and Aptitudes	<ul style="list-style-type: none"> • Able to work collaboratively with others • Able to form good relationships with students. • Able to motivate students • Energy and enthusiasm • Flexibility • Excellent organisational and classroom management skills • Excellent communication and interpersonal skills • Expertise in the teaching of the relevant subject including evidence of excellence in own work as a practitioner • Good knowledge and understanding of current issues in learning and teaching • A reflective practitioner • Clear indication of leadership potential • Able to conduct a conversation and answer questions for an extended period of time where necessary in English 	<ul style="list-style-type: none"> • ICT competency • Willingness to get involved in the broader life of the college through extra-curricular activities • Excellent time-management
Qualifications and Training	<ul style="list-style-type: none"> • Degree in related subject • QTS 	<ul style="list-style-type: none"> • Further qualification &/evidence of continuing professional development
Personal Attributes	<ul style="list-style-type: none"> • High standards of behaviour in the professional role • Commitment to form and maintain appropriate relationships and personal boundaries with young people • Commitment to safeguarding and promoting the welfare of young people • Satisfactory enhanced DBS check, Medical Clearance and 2 References. 	



Anglian Learning

Lode Road
Bottisham
Cambridge
CB25 9DL
Phone: 01223 811250

Email: hr@anglianlearning.org

Website: www.anglianlearning.org