



**King Arthur's School**

# **TEACHER OF GEOGRAPHY**

**START DATE: 18<sup>TH</sup> FEBRUARY 2024**



SCHOOLS ACHIEVING SUCCESS TOGETHER



SHERBORNE AREA SCHOOLS' TRUST

November 2023



Dear Applicant,

Thank you for expressing an interest in the post of Teacher of Geography at King Arthur's School. Accompanying this letter is information about the school, general information about the role and a job description, which we hope will provide you with everything you need to know to apply for the post. The school website also gives further details about us.

This is a permanent, full-time post, commencing in 18<sup>th</sup> February 2024. We believe this is an outstanding opportunity to take on a key support role in a school that works hard to enthuse students and instil in them high standards.

This is a wonderful opportunity to join a school with a great community feel, real strengths and the ability and desire to develop further. From September 2023 there are just under 500 students from age 11-16, with numbers increasing every year. When you visit the school you will notice the:

- Friendly and welcoming atmosphere
- Students are well-behaved, comfortable and safe
- The range of experiences and opportunities
- Hard working, committed and caring staff
- Beautiful location and space for learning
- Strong local community

This is a wonderful opportunity to join a school within a Trust with a great community feel, real strengths and the ability and desire to develop further.

We are looking for a team member with high expectations and standards, the ability to inspire but also the capacity to laugh and enjoy the challenges of this role. You need to be a team player and you will go the extra mile to support. In return, you will join a Trust that is full of activity, opportunity, and optimism. You will be strongly supported by our SLT in your work to ensure our provision is the best.

SAST is a strong and ambitious Trust of both primary and secondary schools seeking to ensure an excellent and sustainable 0-19 education for children within our community across West and North Dorset as well as South Somerset and is looking to grow further.

You are very welcome to visit us in advance of an application or to contact us to find out more.

We look forward to reading your application and we will contact all applicants following shortlisting.

Yours faithfully,

Jen Jacklin,  
Headteacher

# THE ADVERT & APPLICATION PROCESS

We look forward to receiving your application by **9am, Monday 04<sup>th</sup> December 2023**

If invited for interview, these will be held on **Monday 11<sup>th</sup> December 2023**

**Salary:** Main Teachers Pay Range: M1 – M6

**Contract:** Permanent, full-time

We are seeking to appoint an ambitious, creative and inspiring teacher or ECT with energy, enthusiasm and a love of Geography to join our team. This is a permanent, full-time post, commencing on 18<sup>th</sup> February 2024.

The successful candidate will:

- Have a passion for Geography
- Have a passion for working with students
- Be able to plan and deliver high quality teaching
- Have excellent communication have the ability to embrace and contribute to the vision of the Department and school
- Be able to build relationships quickly
- Show respect to others and be able to embrace the ethos and values of the School
- Be positive, optimistic, caring, kind and approachable
- Be willing to be immersed in the life of a busy and successful school
- Have the ability to support, challenge and inspire our students, encouraging them to achieve the best they can through the promotion of outstanding teaching and learning

You are asked to provide the following:

- A completed application form
- A letter of application of no more than 2 sides of A4 detailing your experience and expertise

Completed applications should be returned by email to: [recruitment@sast.org.uk](mailto:recruitment@sast.org.uk)

Should you wish to arrange a visit to view the School, please do not hesitate to contact Claire Hamblin, Office Manager on [claire.hamblin@kingarthurs.org.uk](mailto:claire.hamblin@kingarthurs.org.uk) or at 01963 32368 who will also be happy to arrange this.

*SAST will conduct online searches of shortlisted candidates. In line with KCSIE guidance, this will be part of safer recruitment checks, and the search will purely be based on whether an individual is suitable to work with children. As care must be taken to avoid unconscious bias and any risk of discrimination, a person who will not be on the appointment panel will conduct the searches and will only share information if and when findings are relevant and of concern.*

*Safeguarding responsibilities associated with this role will include engagement in regulatory activity, such as administering first aid or supporting an upset child. It will have some contact with young people on a day-to-day basis. SAST is committed to safeguarding and promoting the welfare of children and young people and expects all staff and volunteers to share this commitment. The successful candidate will have to*

*meet the person specification and the post is subject to safeguarding checks, including an enhanced DBS check and Children's Barred List check. The post is exempt from the Rehabilitation of Offenders Act 1974 and the amendments to the Exceptions Order 1975, 2013 and 2020.*

*Sherborne Area Schools' Trust (SAST) recognises the benefit of having a diverse workforce and is committed to building a workforce which reflects diversity from the communities it serves. SAST values the contributions from all staff from a wide range of different backgrounds and actively seeks to promote an environment that is free from discrimination and harassment and at the same time supports fair promotion and cultural acceptance. Under the provision of the Equality Act 2010 SAST welcomes applications from everyone and operates a recruitment process which is fair and does not discriminate against or disadvantage anyone because of their age, disability, gender reassignment status, marriage or civil partnership status, pregnancy or maternity, race or nationality, religion or belief, sex or sexual orientation.*

*This role is UK- based and your right to work will need to be established as part of the appointment process.*

*(Internal ID Number: RAF328)*





# PERSON SPECIFICATION

## Teacher of Geography

### Inter-personal attributes

- Able to build relationships quickly, with humility and empathy, whilst showing respect to others - students, parents and colleagues - to get the best out of them
- Positive, optimistic, caring, kind and approachable
- Willing to be immersed in the life of a busy and successful school

### Communication and Interaction

- Communicate clearly and accurately both orally and in writing
- Able to listen and respond appropriately
- Flexible to adapt your style in different situations
- Strong and confident ICT skills for teaching and management
- Contribute as a great team player

### Planning and Organising

- Manage daily responsibilities and priorities
- Work efficiently and effectively to meet deadlines and deliver successfully
- Design, produce and share high quality learning schemes and resources

### Knowledge

- Good honours degree and/or relevant high level expertise
- A real interest in educational issues, approaches and alternatives from around the world
- Strongly support the ethos and culture of the school

### Leadership Skills

- Proactive and confident, yet humble and considered
- You can inspire and motivate others
- Make informed decisions on a daily basis
- Ensure high professional standards including student progress of all groups of students

### Problem Solving

- Enjoy facing new challenges
- Find, propose and lead solutions
- Use resources, intellect, creativity and innovation to be successful

### Resilience

- Hungry for a challenge
- Have patience and endless energy to persevere through the challenging moments
- Tenacious and versatile
- Maintain a positive mindset

### Self-evaluation

- You are aware of strengths and weaknesses
- Strong desire to learn from others so that you can be even better
- Able to share and support others

We are interested in all these attributes for colleagues joining the King Arthur's family but appreciate that some will be areas that you have a desire to develop and grow with our support once you are here. A sense of realism and humour are really important.

# GEOGRAPHY DEPARTMENT – USEFUL INFORMATION

## Your Role:

We are seeking to recruit an outstanding Geography Teacher or ECT who recognises the value and importance of Geography, within the school and the wider community. They will be able to engage students, showing a passion for the World around us across a broad spectrum of Human and Physical topics, and encouraging students to engage with the content with the same level of enthusiasm. This is an outstanding opportunity to join a very successful team in a school which continues to seek the very best from all our students.

We are offering the successful candidate the opportunity:

- To join a large and successful team in a thriving school.
- To promote success across a varied and exciting curriculum.
- To work with students across the full age and ability range in an 11-16 School.
- To help shape and create an enhanced provision beyond the great range and quality we already provide.
- To work in an innovative and outward looking school.

There are many factors which will support this opportunity:

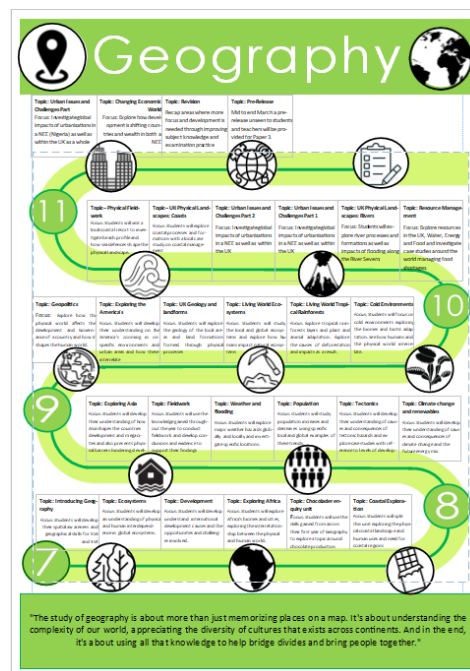
- Positive, courteous, and enthusiastic students
- A well-resourced department, from lessons to texts.
- An extensive array of external opportunities for students to “get their hands dirty”
- A developed CPD programme to allow for personal development.
- A supportive, caring working environment where all have the students’ best interests at heart.
- Extensive links with other schools in the Sherborne Schools Partnership, with the local independent schools, across North Dorset, Dorset, Somerset Academies, good and outstanding schools across the Southwest.

## Our Department Background

- KS4 Results have consistently been outstanding with 30% of the cohort sitting in the summer of 2023 having exceeded their target grades.
- Geography is very popular with our students and uptake from KS3 has been high, with 3 full classes for the 2023/24 Cohort of year 10s.

## The Curriculum

- Our curriculum is constantly adapting and changing to the nature of our students
- KS3 follows a spiralling curriculum where students constantly go back and add depth to their pre-existing knowledge, in preparation for the GCSE pathways.
- Our KS3 curriculum looks into topics including geography key skills of atlas use and grid references, ecosystems, plate tectonics, geology, geopolitics.



- All of our KS3 topics are linked to cases studies too, including an inquest into chocolate production, The Americas, exploring Asia, and fieldwork.
- KS4 follow the AQA geography exam board, covering topics on:
  - Resource Management
  - Ecosystems
  - Urban Issues and challenges
  - Coasts
  - Rivers
  - The Changing economic World.

### **Trips and visits:**

As part of our “getting their hands dirty” approach, students are given opportunities to go on a variety of trips to see the impact of the geography around them. These have included trips to:

- Lyme Regis
- Bristol
- Cadbury World
- Big Pit Living Museum

And with the potential for many more to run in the future.



# ABOUT KING ARTHUR'S SCHOOL



**King Arthur's School**

## **About Us:**

King Arthur's School was built in 1958 and is based in the Somerset town of Wincanton. We serve the local community across the area including surrounding villages in Dorset and Somerset. On the 1st April 2019 King Arthur's School became an academy and joined the Sherborne Area Schools' Trust (SAST). Serving students from the local community and surrounding Dorset and Somerset villages, King Arthur's has been supported by SAST prior to joining, and has close links with all SAST schools.

We are a small secondary school and this helps us to develop a special family atmosphere within our school community, where every student feels cared for and valued. Every child really does matter and all children are known by all staff. Students thrive and succeed in our positive, caring and respectful environment.

Our special culture and ethos focus on high achievement both personally and academically. We want all students to be the best that they can be in respect of their academic achievement and personal growth. We also want them to develop a strong sense of belonging. This comes through their significant contribution to our school community, as well as benefitting from it.

Our goal is to see every student within our school community succeed and achieve their individual best. We aim to support and nurture students to develop confidence and resilience through a wide range of learning and enrichment activities. We continually emphasise high expectations and remind students that there are no limits to what they can achieve, if they have the right mindset.

We believe firmly in opportunity and achievement for all and we are proud to provide an education that aims to equip all students with the self-belief, knowledge, skills and understanding to fit easily and actively into a rapidly changing society.

Our journey of school improvement is well under way and we are all committed to the rapid development of our school. We have already seen huge improvements in outcomes for our young people and growth in our staff. Our improvement priorities currently include: improving the quality of teaching, securing high levels of challenge, and raising pupils' attainment and progress; enhancing parental engagement to best support our young people in their educational journey; improve standards of behaviour and foster a positive culture that promotes learning; ensure pupils and staff have a rich, positive experience of school and are well-looked after.

## **Our Mission**

We support and encourage every student to strive for the highest possible levels of academic achievement, alongside developing the personal attributes and qualities to thrive and make a positive contribution throughout life.

## **Our aims are to:**

- Create a challenging, inclusive, collaborative, creative and happy learning community;
- Ensure high quality teaching and learning, honesty and respect for others, with a collective will to bring out the best in every student in our care;
- Instil in students a belief that they can and will achieve beyond expectations in order to meet their dreams and lead their lives;
- Enable students to take their place in the world as happy, healthy, kind, confident, ambitious and independent individuals, with enquiring minds ready to face the challenges of tomorrow.



## **What we value – The King Arthur's ethos**

- Our students come first
- Enjoyment and fulfilment, with hard work - going the extra mile
- Friendliness and strong sense of community
- Support and care for everyone and each other
- Integrity, manners and honesty
- Inquisitiveness through a breadth of opportunities and experiences
- An engaging, calm and purposeful learning environment
- Leadership, aspiration and ambition
- Pride, quality and excellence – the details matter

## **Care and Support**

King Arthur's School prides itself on the quality of its pastoral care, which helps all students to remain engaged and motivated to learn. At King Arthur's we believe that every child matters and should feel valued as part of our community. Young people need to feel safe and secure in order to thrive academically and socially. Our pastoral team works tirelessly to ensure that this is possible and to help students and their families deal with problems if and when they arise.

## **Our Facilities**

King Arthur's School is set in a spacious green campus with far reaching views across the town of Wincanton and the Blackmore Vale. We have specialist science laboratories and IT suites, food technology rooms, a range of outdoor hard courts and grass pitches and a Performance Centre, which is used for our school productions and special events.

Our library provides a bright and welcoming environment for research and study, with students having access to a wide variety of resources in both print and digital formats.

Café @King Arthur's offers students a selection of nutritious, hot and cold food prepared daily by our dedicated catering team. Our healthy and nutritious menu is popular with students, and we cater for many with dietary requirements.

Students also benefit from access to an on-site sports centre with a fully equipped gym, a sports hall and a 25m swimming pool.

A number of community groups meet regularly at the school, including Guides, Brownies, Rainbows, Army Cadets, and the Choral Society, offering students enrichment opportunities in addition to the many extra-curricular activities available during the school day.



# SHERBORNE AREA SCHOOLS' TRUST (SAST)

## INFORMATION

SAST is a multi-school trust, formed in June 2017, with 18 schools across Dorset and South Somerset. We have more than 5,0700 students and over 850 members of staff. SAST has large town primary schools with over 300 children, smaller village primary schools and nursery provision. SAST also has 5 secondary schools including a state boarding school and Sixth Form and a large 11-18 secondary school with a Sixth Form of over 400 students. There is a mix of formerly maintained and Church of England schools - both voluntary controlled and voluntary-aided in the Diocese of Salisbury. We believe in preserving Schools in their local community.

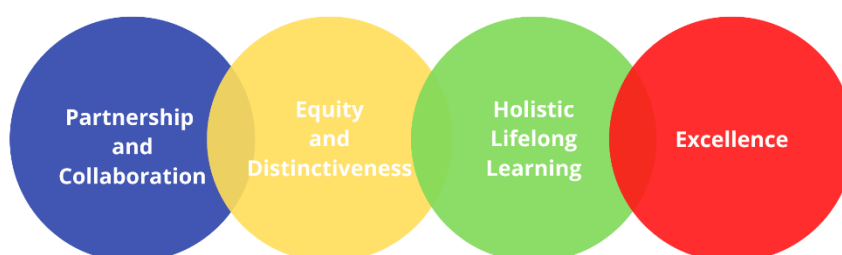
### **Our Schools:**

A key principle of the SAST is that member schools maintain their own character, such as church and community status. All schools in the multi-school trust are equal partners and are committed to the principles of collaboration, sharing expertise and resources to enable all partner schools to deliver excellent education for all young people in their care.

At the heart of SAST is the desire to work in partnership, to collaborate with others and to be outward facing for the benefit of children and staff. The schools have extensive links beyond the immediate area and are keen to extend these further.

SAST works by providing opportunities to share and improve - to develop further our provision as well as supporting the quality of leadership and management. This includes sharing best practice, being creative in maintaining a broad and diverse curriculum, ensuring the care and support is in place for children and families and enabling further staff and teacher development. We also work together on meeting the challenges of funding and the opportunities for financial efficiency, determining for ourselves which services and providers we will use to provide outstanding provision for our children. There is real strength in coming together with a collective responsibility for all of the children's development and progress between 0-19 years.

### **What we value – our ethos:**



#### **Partnership and Collaboration**

Our schools support each other, by sharing expertise and resources, to ensure improvement.

#### **Excellence**

We provide a high-quality education to enable all students and staff to aspire, thrive and succeed.

#### **Holistic Lifelong Learning**

We promote the personal development of every child and a love of lifelong learning for our students and staff.

## **Equity and Distinctiveness**

We celebrate the individuality of each school and all in it. We are proud to be at the heart of our local communities.

## **Organisation - How we work:**

All our schools are successful. Of course, we recognise that we need to continually improve and evolve. The priority is to enable every school to continue to provide an excellent education for all our students while protecting their role at the heart of the community, along with our unique qualities and strengths.

There is a balance as to the responsibilities delegated to schools and those that are the responsibility of SAST. The focus is to continually evaluate, improve and develop through strong, effective and accountable leadership at all levels. The aim is to establish clear, simple and effective accountability including slim and streamlined governance.

## **Partnerships:**

Partnership and collaboration is a core feature of all our schools – a genuine desire to be outward-facing, to use the best ideas from across the world. The schools have always worked closely together across Dorset and Somerset.

## **SAST Benefits:**

As part of the Sherborne Area Schools Trust, we can offer you a range of benefits including:

- High- quality CPD opportunities
- A strong and highly experienced network of Trust senior leaders
- Access to the Local Government Pension Scheme
- Employee Assistance Programme
- On-site nursery provision at some of our schools
- Cycle to work scheme

