



St Edmund's Catholic School

Caelum Dives IngreDi

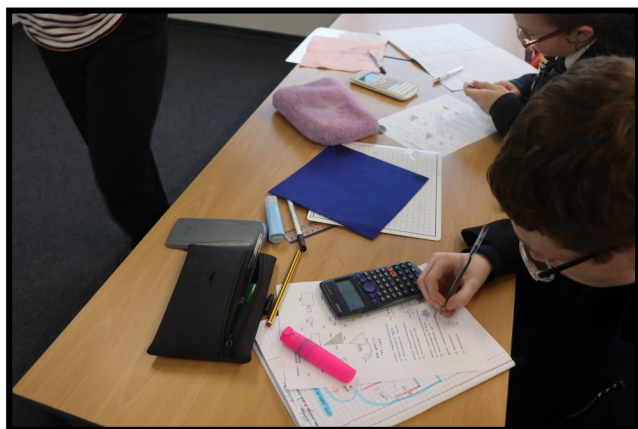
Headteacher: Mr S Graham BSc, NPQH



Teacher of Mathematics

Information for Applicants

Our aim is to encourage spiritual development and understanding of the faith, create an atmosphere of order, discipline and respect, enabling every pupil to achieve their true potential. Maintaining standards of excellence in teaching and learning and build a family which cares for all its members where understanding, mutual trust and friendship are fostered.



'I can do all things with the help of God who strengthens me.'
Philippians 4:13



St Edmund's Catholic School

Arundel Street, Portsmouth Hampshire PO1 1RX
Caelum Dives IngreDi

Headteacher: Mr S Graham BSC, NPQH

Dear Colleague,

TEACHER OF MATHEMATICS: September 2024

St Edmund's is a thriving, positive and happy school, where individuals achieve excellent levels of personal development and outstanding academic achievement. As a Voluntary Aided Catholic School we seek to provide a Christian education for our children within the discipline and traditions of the Catholic church.

We are extremely proud of the quality of education, opportunities and life experiences that our children receive. This is only possible thanks to the fantastic staff who put students first and are committed to all aspects of the St Edmund's family. Our outcomes for students have been the best in Portsmouth and South Hampshire for several years. St Edmund's has been in the top 10% of all schools nationally for many years. We have been rated Outstanding by Ofsted in 2016 and June 2022. This fantastic achievement reflects the special learning environment which exists here at St Edmund's, allowing students to learn and develop in a family where mutual trust, respect, collaboration and tolerance are fostered. Staff working at the school can enjoy their roles and reap the rewards of working with young people and educating the future generations of our world.

As a Christ-centred learning community we have a passion for developing the individual God given gifts which we are bestowed. We seek to improve curiosity, creativity and a passion for life long learning. In an environment with high standards and an atmosphere of order, discipline and respect. Our faith identity is not an add on but permeates all aspects of life at St Edmund's allowing individual, spiritual development in a positive family, where tolerance, love and mutual respect, a zest for learning are some of our guiding principles.

We are looking for someone with a commitment to the Catholic Christian ethos of the school, a capacity for hard-work and a passion for ensuring that students are successful both academically and in their educational experiences. Working with staff, students, parents and governors, you will have the enthusiasm, dedication and talent to continue to drive this outstanding family forward.

The school is looking to recruit an outstanding and inspirational teacher to join the Mathematics Department.

You will be well supported by and contribute to a friendly, hard-working and talented team, fantastic staff and lovely pupils. You will have a key role inspiring young people to have a love of Mathematics. This role is full time.

The deadline for receipt of application is **Monday 18th March 2024**. These can be emailed to the school via: recruitment@saintedmunds.org.uk.

I very much hope that having read the enclosed details and looked at the school website, you choose to apply.

**'An inclusive education finds a place for all
and does not select in an elitist way the
beneficiaries of its efforts.'**
Pope Francis

Yours faithfully

Mr S Graham
Headteacher



Application Procedure

We hope this guide is helpful and that, having read the details, you will wish to apply for the post. If so, please complete the St Edmund's application form.

I would ask you specifically to describe:

- Your experience to date and the main features of your current experience.
- Your reasons for applying for the post.
- How have you improved the quality of teaching and learning to date for children?
- How you might contribute to the St Edmund's family?

Please do not submit additional documentation.

Completed applications should be returned to the Headteacher no later than:

Monday 18th March 2024

The post will start in September 2024.

Job Reference: MA24.

St Edmund's Catholic School is committed to safeguarding and promoting the welfare of children and young people and expects all staff and volunteers to share this commitment. This post is covered by the Rehabilitation of Offenders Act 1974 (Exemptions) Order 1975 and you will be required to declare whether you have any criminal convictions. St Edmund's Catholic School is an equal opportunities employer and welcomes applications from all sections of the community.





Intent:

The intent of the Saint Edmund's mathematics curriculum is to develop independent and competent mathematicians who are able to apply their skills in any occupation or activity they choose later in life. We aim to create a confidence with numeracy and an ability to make reasoned financial decisions and strive to demonstrate the inherent joy in tackling challenging problems and finding a satisfying solution.

Our curriculum is designed to meet the aims of the national curriculum and help learners:

- become fluent in the fundamentals of mathematics, including through varied and frequent practice with increasingly complex problems over time, so that pupils develop conceptual understanding and the ability to recall and apply knowledge rapidly and accurately.
- reason mathematically by following a line of enquiry, conjecturing relationships and generalisations, and developing an argument, justification or proof using mathematical language
- solve problems by applying their mathematics to a variety of routine and nonroutine problems with increasing sophistication, including breaking down problems into a series of simpler steps and persevering in seeking solutions.

Implementation:

The curriculum is planned and contributed too by all specialist maths teachers in the department. Lessons follow a consistent and successful model based around the principles of TEEP and contain opportunities for adapted teaching strategies throughout. Series of lessons will be linked together into units and progress will be reflected on and checked against Wilfs throughout. All lessons follow an "I do, we do, you do" structure, with every modelled example followed by a mini-whiteboard activity to check understanding and then independent practice to embed/extend the learning.

Year 7, 8 and 9 follow a spiral style curriculum, starting with the fundamentals before moving to more advanced content, always linked to the appropriate level of ability for the learner. Each term's curriculum contains catch-up/extension opportunities to give teacher's flexibility to spend more time delivering a topic if necessary or extend the learning further.

As a department we are interested in the forgetting curve and the research surrounding it, implementing strategies to reduce the deterioration of hard-won knowledge where possible using spaced recall. To this end every lesson begins with a starter challenging recall of the preceding lesson, end of unit assessments force recall of recently taught material, problem solving sessions encourage recall and application of several skills taught over the last month and termly assessments bring recall of the previous 3 months of learning together. Interspersed within these will be homework tasks on the more prominent skills, completed using an electronic platform, where St Edmund's is the top 1% of schools for providing feedback to students.

We are a reflective department and organically adapt our delivery overtime; the KS4 and KS3 curriculums are regularly reviewed and lessons/curriculum time adapted based upon pupil performance as we push to maximise the progress of all our learners.

'Success is no accident. It is hard work, perseverance, learning, studying and most of all, the love of what you are doing or learning to do.'

