

Information about the School

Mission Statement

The Ladder School is a safe, well ordered and caring environment for learning. It delivers high quality education to all its students and supports them to develop their individual potential for growth, self-worth and self-control.

Values

- Alternative Provision doesn't mean a dumping ground...it's mainstream with the reasonable adjustments to succeed
- High standards and high expectations are incredibly important and are the corner stones to a successful school
- The Ladder School should become the go-to place for educators from across the country to see best practice
- Good simply isn't good enough
- Learning is about a journey and there is more than one way to get to the destination
- Qualifications, manners, respect and opportunity should be the foundations for students that need a second chance.

School Ethos



High Standards



Daring to Dream



Traditional Values



Success



Personalised Support

Curriculum Model

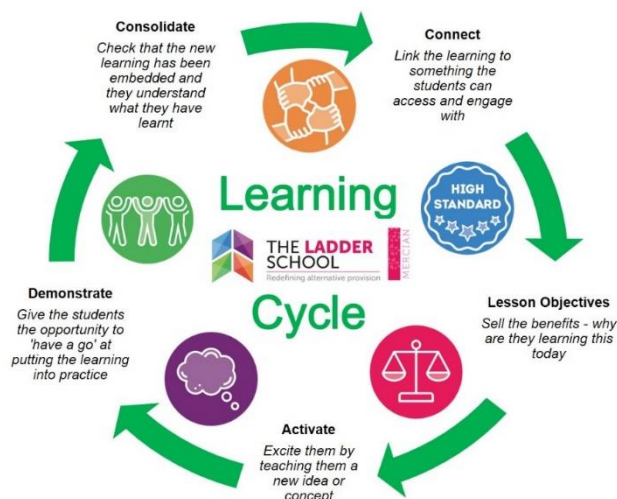
All students will study a combination of academic and vocational courses. The curriculum has been designed to teach all of the academic subjects in the morning and all of the vocational options/non-core in the afternoon (for KS3/4). Our Sixth Form (KS5) is the opposite, they have their vocational subjects in the morning and their core subjects in the afternoon.

All lessons offer a high teacher/student ratio. At KS4 core lessons are taught horizontally, however, vocational lessons are taught vertically to offer a wider subject choice. KS5 are also taught in vertical groups and KS3 are taught in their own year groups.



Teaching and Learning

We use a simple Learning Cycle, which is easy to understand and ensure there is methodology to our format of Learning and Teaching. Other than our structure, we allow staff to decide how best to teach the students in front of them. As long as students are making progress and staff are ensuring that learning is engaging, there is no set way staff teach.



School Day

We ask that all staff are on site no later than 8.20am in the morning, where there will be a team briefing ready for the day ahead. Students are asked to be onsite at 8.35am where they have the opportunity to get prepared for the day. Lessons start promptly at 8.45am.

Time	Session
8.45am – 9.30am	Lesson 1
9.30am – 10.00am*	Supervised Intervention/Break
10.00am – 10.45am	Lesson 2
10.45am – 11.30am	Lesson 3
11.30am – 12.15pm	Lesson 4
12.15pm – 12.45pm	Supervised Lunch
12.45pm – 1.30pm	Lesson 5
1.30pm – 2.15pm	Lesson 6
2.15pm – 2.30pm	Skills/Tutor Time

*Students who arrive late will remain in class for 15 minutes

Students will stay with their Learning Coach/Tutor to complete Re-do

Safeguarding

The Designated Safeguarding Lead (DSL) is **Mrs G Cooke (Assistant Principal)** and she can be contacted via the school office. The member of staff on duty will be displayed in Reception daily. **Mr C Bury, Mrs H Cornwall and Miss J Crowther** are the Deputy DSL's.

