



ELY COLLEGE

College Prospectus

2022 - 2023

CMAT

Cambridge Meridian
Academies Trust

Ofsted
Good
Provider



Contents

Welcome from the Principal.....Page 3

The Academy Trust.....Page 4

The CMAT Family.....Page 6

The College Identity.....Page 7

House System.....Page 8

Vertical Tutoring.....Page 9

The Year 7 Experience.....Page 10

College PLEDGES.....Page 12

Session 6.....Page 14

Enrichment Opportunities.....Page 15

The Curriculum.....Page 16

Valued Member of the Community.....Page 18







Welcome to Ely College

I am very proud of this College and it is a tremendous privilege to be its Principal. Ely College has a simple vision of being a great college of which the whole of the Ely community can be proud. The way the college staff, students and parents have pulled together during the Coronavirus pandemic shows this community at its best and I am delighted that you are considering joining us in September 2022.

Clearly the “traditional” model of Year 6 Open Evenings and welcome events will be a challenge for all schools to deliver in a safe and secure way. We will look to create resources and engage with you as fully as possible to address any questions you will have about your child progressing to secondary education. I hope that this prospectus gives you a helpful insight into some of what we offer. Like the community we serve, Ely College is a happy and hard-working place, with high expectations and aspirations.

Since joining the Cambridge Meridian Academies Trust in July 2016, the College has gone from strength to strength. In 2018 we were named ‘Secondary School of the Year’ by the Cambridge Evening News Education Awards and in July 2019, we were delighted that Ofsted judged us to be ‘Good’ with ‘Outstanding leadership and management’. We are proud to have built even further on these successes with our recent GCSE results and our oversubscribed Year 7 intake.

The College is supported by the village college ethos and the values of the Cambridge Meridian Academies Trust (CMAT), described by Ofsted as: ‘an absolute belief that every child matters’. The core of this philosophy is:

-  **Achievement for all**
-  **Providing a high quality learning environment**
-  **The pursuit of excellence**
-  **Extending the boundaries of learning**
-  **Valuing people**

We expect students to work hard and develop resilience when faced with challenges. Together we will celebrate the achievements of our students, whatever their level of ability. We know that learning is at its best when staff, students and parents work closely together, so on behalf of our staff may I say that we look forward to meeting with you and seeing you at as many College events as possible.

This prospectus provides a useful summary of how we translate these aims into reality for each student. We hope that you will be inspired to join us in the pursuit of our aims of knowing and supporting every student to achieve and enjoy their school experience.

Simon Warburton



The Pursuit of Excellence

CMAT | Cambridge Meridian Academies Trust

The Academy Trust

Ely College joined the Cambridge Meridian Academies Trust (CMAT) family in July 2016. Since then, CMAT has continued to grow in the region, allowing for strong networks and links to flourish between staff and students across primary secondary and special schools. This allows for close collaboration between teachers and allows us to share resources, expertise and best practice easily.

"School leaders' work with the trust has contributed to improved teaching, learning and assessment and ensuring that leadership at all levels is strong."

Ofsted, July 2019

The Trust was formed with a simple and clear vision: 'to ensure high quality education at the heart of the community.' It also enabled Swavesey Village College, considered to be 'outstanding in every respect' by Ofsted, to sponsor other academies, and help spread the best education practice.

The Trust truly values the success of every child and places the sharing of excellent education practice at its core. It is committed to improving the quality of education and life in Cambridgeshire and Peterborough, and their immediate surroundings. The Trust is dedicated to maintaining its core principles and focus as it grows.

CMAT was named the fifth highest performing multi-academy trust in the country for its performance in the 2016 Key Stage 4 league tables and has now helped five schools to achieve 'Good' Ofsted ratings.



Valuing People

- ▶ Appreciating the incredible trust placed with us in educating young people and serving our community
- ▶ Valuing the diversity and qualities of our staff and students
- ▶ Ensuring that all students and staff feel known, appreciated and supported
- ▶ Committing whole-heartedly to collaboration within, between and beyond our academies



A high quality learning environment

- ▶ Providing high quality buildings, engaging classrooms and excellent sporting facilities
- ▶ Delivering innovative learning resources and materials
- ▶ Ensuring a well-disciplined and caring environment
- ▶ Exploiting cutting edge technologies to expand the opportunities for students, staff and our community to benefit from learning in a digital age



Achievement for all

- ▶ Ensuring that every student achieves their maximum potential
- ▶ Maintaining a relentless sense of optimism
- ▶ Removing barriers to learning
- ▶ Providing a whole education: academic excellence co-existing with an exceptional commitment to activity beyond



The pursuit of excellence

- ▶ By expecting this of every person, every day
- ▶ Continually striving for the creation of a true meritocracy
- ▶ Promoting and celebrating elite performance inside school and in the wider world
- ▶ Rejecting outright any sense of complacency



Extending the boundaries of learning

- ▶ Providing positive memorable experiences inside and outside of the classroom
- ▶ Providing a diversity of experience to all
- ▶ Opening up the world to all students
- ▶ Securing the very best future educational and vocational experiences for our students

For more information about CMAT, visit our website: www.cmatrust.co.uk

The CMAT Family

CMAT | Cambridge Meridian Academies Trust

CMAT is a successful multi-academy trust founded on its commitment to people and communities. Recently, we have extended our reach further into Bedfordshire and Peterborough, with the likes of The Ferrers School, Lincroft Academy, Sharnbrooke Academy, Stratton Upper and various primaries joining the CMAT family. The DfE has shown a confidence in the Trust, as we continue to support a range of Secondary, Post-16 and Special School in the local region.

Every child is known, equally valued and supported to achieve their potential in all our academies.

Every community we serve benefits from the facilities and services we provide.

Our staff benefit from strong networks, excellent career opportunities and a human approach.



Bishop Laney Sixth Form is our on site Sixth Form provision which provides a thriving centre of academic and professional 16-19 excellence. Offering a suite of A levels and Technical courses, it is their emphasis on high standards in all that they do, that has seen the centre grow significantly over the last few years, both in numbers of students and in their achievements.



Swavesey Village College was the founding member of the Trust and is regarded as being 'outstanding in every respect' by Ofsted (2011). The College is also an accredited Teaching School.



Stamford Welland Academy started working with CMAT in September 2014. Just seven terms later, Ofsted inspectors judged the academy as 'Good' in all areas. The KS4 results in summer 2016 were the highest results ever recorded by the Academy and placed them in the top 25 per cent of schools nationally for the progress made by the students.



Nene Park Academy was the first sponsored Academy to join the Trust in 2011. Since joining CMAT, the Academy has recorded significantly improved GCSE and A Level results and is now rated as being 'Good' by Ofsted (2013). In 2016, the Academy was asked to create 400 additional places by Peterborough City Council's planning committee.



Sawtry Village Academy, formerly known as Sawtry Community College, joined CMAT in 2014 after the College was placed into special measures. The Academy was judged overall to be 'Good' by Ofsted in 2018, with 'Outstanding' sixth form provision. It has been "completely transformed" according to Ofsted.



North Cambridge Academy, formerly known as the Manor Community College, recorded one of the worst set of GCSE results in the country in 2012. After joining CMAT, these results had tripled by 2014, and the school is now rated as 'Good' by Ofsted (2015).



Two of our local feeder primaries brought into the CMAT family in recent years. **Downham Feoffees** became the third primary to join CMAT in September 2017 with the **Lantern Community** primary following in June 2018.



Lantern Community Primary School

The College Identity

Uniform

In September 2017 we launched a new, smarter uniform throughout the College, following consultation and feedback from our students.

All students should wear a plain black skirt OR plain black full length tailored trousers with a collared white shirt, a grey jacket with piping and school logo, a House tie and black sensible shoes, suitable for a professional office environment. It is optional for students to wear a plain black V neck, knitted jumper.

The PE uniform includes a House PE top and plain black PE shorts, so students can participate in sport with the pride of their House. Our supplier also offers the optional addition of a black PE fleece and black sports trousers, both with piping. We currently ask that all students come prepared with additional 'wet weather' kit that should include a plain waterproof jacket, and a plain warm jumper.

Items specific to the College (grey jacket with piping and logo, House tie, House PE top and the optional items of black sports trouser and black fleece, both with piping) can be purchased from our designated supplier, Price and Buckland.

Orders for Price and Buckland can be placed on their online shop, accessed through the Ely College website. Alternatively, paper forms are available from House Offices and the Main Reception.

The white shirt, black skirt, black trouser, knitted black jumper, black shorts and wet weather kit can be bought from any high-street retailer.

For more information, please visit www.elycollege.com/uniform



Valuing People

Ely College embeds CMAT's core values at the heart of everything we do. These initiatives have been developed and proved to be successful at other schools in the Trust.



Vertical Tutoring

The mixed aged tutor group system is known as Vertical Tutoring. Each tutor group will have a mixture of students from Years 7-11. The Vertical Tutoring system has many benefits, fostering a family spirit where older students offer guidance and provide support to younger students. It also ensures students have a sense of the whole school picture as the younger students see the older ones preparing for work experience, subject choices and important examinations.

The tutors will follow the students from their first few days to their last at the College. This allows them to easily build great relationships

with students and their families and ensure they receive the support they need. Each tutor will make regular contact with a child's family in the year to discuss progress and address any concerns.

An encouraging House ethos for students to strive in is developed and strengthened by healthy competition. Students will have the opportunity to compete alongside their House peers in a variety of activities in order to claim victory and win the prestigious House Cup.

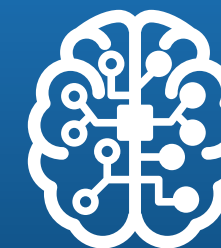
House System

Ely College now has five main school Houses:

The Houses provide crucial support and guidance, and the needs of every student are acknowledged and understood by their tutor and senior tutor. The system enables individual progress to be monitored much more closely and the House is the key focus of the relationship between the College and families, with siblings joining the same House.

The House offices are a great base for students and parents to find the support and advice they may need. Each House has a dedicated member of the leadership team, a Senior Tutor and a Student Support Assistant.

In 2021 we established Seacole, our new fifth House for Ely College, as a result of our growth and student numbers. We included students, staff and wider community in this important process and look forward to building on its success together, hopefully with a sixth house in the future.



Turing



Scott



Franklin



Etheldreda



Seacole



A high quality learning environment

The Year 7 Experience

Once students are allocated a place at Ely College, our main aim is to get to know each individual student as soon as we can through regular, personal contact.

The relationship between college, student and parents is fundamental to a successful start to secondary school and our House system is the best platform to achieve this. Should situations arise where a student may need more support, we promise communication will be easy, valued and effective from the very start of your partnership with us.

Our commitment to transition starts early, with many activities planned, organised and supported by Ely College's staff and students throughout the course of the academic year with our partner primary schools.

This is crucial because it allows the primary students to familiarise themselves with the College, its values and its culture before arriving in September.

"Leaders have carefully constructed a curriculum that supports pupils' academic and personal development well."

Ofsted, July 2019



Achievement for all



PARTICIPATION
PLEDGE



LEADERSHIP
PLEDGE



EXCELLENCE
PLEDGE



DIVERSITY
PLEDGE



GIVING
PLEDGE



ENVIRONMENTAL
PLEDGE



SERVICE
PLEDGE

College PLEDGES

We have an uncompromising commitment to ensure that every child achieves their academic potential at Ely College. Our curriculum has been carefully designed to secure the best possible outcomes for our students. We also have support systems in place for students that need extra support and guidance to achieve.

In order to support our challenging curriculum, we have also developed and invested in a simple but broad set of College PLEDGES that students are expected to complete during the course of their time at the College, at Bronze, Silver and Gold levels.

PLEDGES are an awards system which offers students a range of character-building opportunities that enhance their learning and development. It is an expectation of every student to complete their PLEDGES during their time at the College.

The PLEDGES system aims to encourage and support many important qualities in students, such as responsibility, expectation, intuition and citizenship, all of which are crucial for giving students skills and brighter futures.

Did you know?

- ▶ *Completing PLEDGES can also help your House to win the House Cup at the end of the academic year*



Session 6

We offer a wide variety of extra-curricular opportunities through a timetabled programme over the year. These encompass activities such as sports, film making, music and additional subject support.

The College day extends to 4.15pm for those students who wish to stay for after-school activities or additional curriculum assistance – these sessions are called Session 6’s. We provide transport to the local villages to allow students to get home; this is booked each day via the LRC.

Session 6 can also be important in ensuring that students receive additional support to develop understanding and confidence at all ranges of abilities. Teachers will recommend sessions that will be useful if a student needs additional support or clarification. Students can also drop into extra-curricular sessions themselves if they are feeling overwhelmed or need assistance.

***Did you know?** Attending Session 6s can help you work towards your PLEDGES*



Enrichment Opportunities

We believe in an all-inclusive education where every student not only develops academic skills, but self-confidence, life-skills, and leadership experiences.

In addition to the enrichment programme, there are a wide-range of other whole College community events:

- ▶ Inter-House competitions
- ▶ Extended curriculum days
- ▶ Charity events

There are student leadership opportunities to be found throughout all aspects of College life – from the informal leadership that is inherent in the mixed age tutor groups, through to the College House Captains, and local and national representative groups.

Session 6 and lunchtime activities have included:

- | | |
|-----------------------------------|-----------------------------|
| ▶ Archaeology Club | ▶ Charity Committees |
| ▶ Engineering Club | ▶ Chess Club |
| ▶ Debating Club | ▶ Spanish (Key Stage 4) |
| ▶ Computing Club | ▶ Science Club |
| ▶ Schools Shakespeare Competition | ▶ Creative Writing |
| ▶ Sewing Bee | ▶ Games and Enrichment Club |
| ▶ Reading Group / Reading Aloud | ▶ French Club |
| ▶ Knitting and Crochet | ▶ Student Librarians |

Music groups / ensembles have included:

- | | |
|-----------------------|-------------------------|
| ▶ Gypsy Jazz Ensemble | ▶ Jazz Ensemble / Combo |
| ▶ Choir | ▶ String Ensemble |
| ▶ Brass Ensemble | ▶ Flute Choir |

Sports clubs and opportunities have included:

- | | |
|--------------|--------------------|
| ▶ Rugby | ▶ Ultimate Frisbee |
| ▶ Netball | ▶ Football |
| ▶ Basketball | ▶ Dodgeball |

Extending the boundaries of learning

The students are at the heart of the educational process and must be encouraged to participate fully in the life of the College. Contributions and ideas from all students will be valued and listened to. We believe that all students, regardless of their age, gender, ability and background should experience personal fulfilment through the 'entitlement curriculum'.

It is essential to recognise that education is an 'on-going' process and students receive only a section of their education at this college. The curriculum of the college must be continuously evolving, forward looking and under constant review. The College will ensure that its statutory duties regarding the curriculum are carried out.



Curriculum Structure: Key Stage 3 (KS3)

Students in Years 7 and 8 (Key Stage 3) currently study the following subjects:

- ▶ English
- ▶ Mathematics
- ▶ ICT
- ▶ Physical Education
- ▶ Science
- ▶ Creative Arts (Art, Drama and Music)
- ▶ Humanities (Geography, History, and Religious Education)
- ▶ Modern Foreign Languages (French or Spanish)
- ▶ Technology (covering aspects such as Food, Graphics, Resistant Materials and Textiles)
- ▶ Personal Development, Careers Information, Advice and Guidance

Curriculum Structure: Key Stage 4 (KS4)

All students in KS4 work towards external examinations in all subjects with the exception of Physical Education. Students in Years 9 to 11 have some degree of choice but all students will study:

- ▶ English
- ▶ Mathematics
- ▶ Science
- ▶ Physical Education
- ▶ Humanities (History, Geography)
- ▶ Core studies which includes Religious Education, Personal Development, Careers Information, Advice & Guidance

There will also be a number of guided choices designed to give a good range of choices and sound careers and further education progression. Students can choose from subjects such as:

- ▶ Creative & Performing Arts (Art, Drama, Media Studies, Music)
- ▶ Humanities (Business Studies, Religious Education, Child Development, Health and Social Care)
- ▶ Physical Education
- ▶ Modern Foreign Languages (French or Spanish)
- ▶ Technology (Food Technology, Catering, Hairdressing, Product Design, Textiles, 3D Products)
- ▶ Computer Science, IT, Digital IT
- ▶ Sport
- ▶ Hospitality and Catering



Bishop Laney Sixth Form

Curriculum Structure: Key Stage 5 (KS5)

Bishop Laney Sixth Form is based at Ely College. At Bishop Laney we offer a range of highly regarded A Level, Technical and Professional courses.

All students engage in a planned programme of extra-curricular and work related learning. The subjects currently offered are:

A Level:

- ▶ English Lang & Lit
- ▶ English Literature
- ▶ Mathematics
- ▶ Further Maths
- ▶ Computer Science
- ▶ Chemistry
- ▶ Physics
- ▶ Biology
- ▶ Drama
- ▶ Music
- ▶ Music Technology
- ▶ Product Design
- ▶ Fashion & Textiles
- ▶ Fine Art
- ▶ Photography
- ▶ History
- ▶ Geography
- ▶ Business
- ▶ Philosophy & Ethics
- ▶ Psychology
- ▶ Sociology

- ▶ EPQ: Extended Project Qualification

Technical:

- ▶ Accounting
- ▶ Applied Science
- ▶ Barbering
- ▶ Beauty Therapies
- ▶ Business
- ▶ Business Admin.
- ▶ Catering & Prof. Cookery
- ▶ Criminology
- ▶ Hairdressing
- ▶ Digital Media & Production
- ▶ Exercise & Sport Science
- ▶ Sports Coaching
- ▶ Health & Social Care

Profession Programme:

- ▶ Norwich City Football Club



ELY COLLEGE COMMUNITY EDUCATION

Adult and community education

We're passionate about providing the widest possible range of learning activities in Adult Education, not only because it is important to do so but because learning really does enrich people's lives. We aim to offer the best possible experience for adult learners in the region and were recently awarded as Highly Commended for being an excellent provider. When you join a class, you can be assured a high quality service, taught by well qualified and enthusiastic tutors. We offer a huge variety of courses; visit our website www.elycollege.com/community for further information.





Valued member of the community

Ely College is a valued member of the wider community and a source of immense pride.

Drawing upon the Village College roots of the Trust, we firmly believe our role is to provide for all members of the community we serve. The College's facilities are open and widely used by the community, and we offer a wide range of popular adult and community education classes.

Students are given many opportunities to take a lead in the College and in their Houses. They can run for election to become one of our Student Ambassadors, join the Student Council as Form or House Representatives or become a House Captain, and in doing so will work towards their Leadership PLEDGE whilst airing their views and concerns.

Each House has a chosen charity that they support and students are encouraged to volunteer in the wider community.

Establishing close links with younger students at nearby primary schools is also important, and we will be inviting them into the College to take part in a range of sporting, science and cultural projects. Some of the College's teachers will also be attending local primary schools to provide the students with wider opportunities in areas such as languages, music, drama and sport.



Our Student Ambassadors

Part of the CMAT family.

CMAT Cambridge Meridian Academies Trust



Lantern Community Primary School



Downham Feoffees Primary Academy



Swavesey Village College



North Cambridge Academy



Northstowe Secondary College



The Ferrers School



Bishop Laney Sixth Form



NenePark Academy



Stamford Welland Academy



Sawtry Village Academy



West Town Primary Academy



Sawtry Junior Academy



Harrold Primary Academy



Great Ouse Primary Academy



Northstowe Martin Bacon Academy



Stratton Upper School



GREATER PETERBOROUGH UTC



LINCROFT ACADEMY



Weldon Village Academy



ELY COLLEGE

Ely College, Downham Road, Ely, CB6 2SH

Tel: 01353 667763

Email: office@elycollege.co.uk

Web: www.elycollege.com

Twitter: @elycollege

Facebook: @elycollegeCMAT

Ofsted
Good Provider

Ely College was 2018 Winner of
'Secondary School of the Year'

CAMBRIDGE
NEWS & MEDIA
www.cambridge-news.co.uk

Education
AWARDS
2018