



Reading Girls' School
About Our School

ABOUT OUR SCHOOL



Reading Girls' School

Reading Girls' School is a partially selective secondary girls' school for students aged between 11 and 16. We are already a DfE approved 11-18 school and the plan is to re-open the 6th Form in 2023. We have 696 students on roll. However, our new school building has the capacity for up to 1,000 students. Due to the schools popularity our student numbers are growing rapidly, resulting in the need for more teaching staff.

One of our greatest strengths is the multicultural society that permeates the school community. We welcome students from a range of ethnical backgrounds. Currently 25% of our cohort is White British and the other 75% a mixture of different ethnic backgrounds.

Our girls are dedicated to their academic achievement. As a result, behaviour for learning within the classroom is exemplary. This is also evident in the continued improvement in examination grades and *'performing in the top 1% of schools nationally'* (DfE, 2019).

At Reading Girls' School, we have a strong commitment to high standards for students and staff. We are a diverse and dynamic school with a reputation for providing a caring environment where students can succeed; our girls have a real enthusiasm for learning and take pride in their school. As a teaching team we are highly qualified and all share a passionate belief that every student in our school matters.

Unique features of the school are:

- ✓ 95% of pupils feel behaviour is very good and they feel safe at school (student survey, December 2021).
- ✓ By the time pupils leave Year 11, they will have had the equivalent of six years education in five without reducing school holidays.
- ✓ We allocate blocks of learning time to allow the school to visit industry or host industry guests to co-deliver lessons.
- ✓ Small Year 11 class sizes – we reduce Year 11 class sizes to 12-15 pupils.
- ✓ STEM – students in Year 7 and 8 have fortnightly STEM days built into their curriculum.
- ✓ We build in a number of personal development and RE days during which students receive PSHE education delivered by external professionals.





CURRICULUM

VISION

To equip every student with the lifelong knowledge and personal skills needed to access a broad range of opportunities in the next stage of their lives.

CORE VALUES

By fostering a culture of deeper applied learning through sequential R.E.A.L. curriculum experiences within and beyond the classroom.

Reading Girls' School is a dynamic, supportive and hardworking community, ambitious for all our students, providing the highest quality of education. We are committed to engaging, inspiring and motivating students in their learning. We place children at the heart of what we do. We are committed not only to their academic success but also to ensuring that they receive a holistic education, enabling them to pursue their talents, and develop as young adults, through the varied opportunities available to them.

Our students enthusiasm for the school, and their support and participation in every aspect of school life, make them extraordinary. Our Senior Student Leadership Team works closely with the Senior Leadership Team to ensure the school continues to thrive and succeed. Our Ofsted Report (Nov 2021) judged the school to be Good with Outstanding features. Behaviour and Attitudes was deemed to be outstanding, notably as a result of the 'kindness and care' shown to each other, and as a result they are unreservedly very 'proud' of their school. The atmosphere both in and out of class is one of calm and a sense of purpose, and lessons proceed without disruption to learning.

We offer a broad, balanced, relevant, differentiated and inclusive curriculum to all students which conforms to the National Curriculum.

- 1 Developing British values and Spiritual, Moral, Social and Cultural (SMSC) understanding form a key part of our provision. Students are grouped in a variety of ways, according to the needs of each subject.
- 2 At Key Stage 3, students study an extensive range of subjects to ensure that our girls experience a broad curriculum in order for them to make informed subject choices at Key Stage 4.
- 3 At Key Stage 4, we aim to provide a personalised curriculum with students being encouraged to follow the subjects that offer them the best chance of success. We engage students and parents in decisions regarding their guided choices.
- 4 The curriculum offered at Key Stage 4 ensures that there are clear progression routes to enable students to continue their post-16 education and to prepare them for higher education and/or the world of work.
- 5 Formal assessments of learning are conducted according to our Assessment, Recording and Reporting schedule.

For more detailed information about the content of our curriculum and the culture of Deeper Applied Learning in our school which we deliver through Relevant, Engaging and Active Lessons, please go to the [curriculum page](#) of our website.

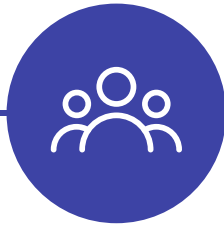
SCHOOL FACTS & STATISTICS



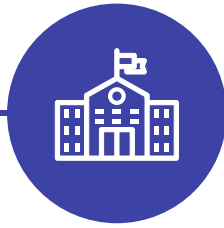
Reading Girls' School



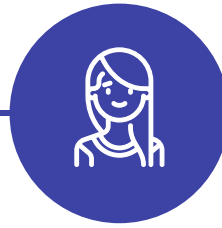
Type of School
Secondary School



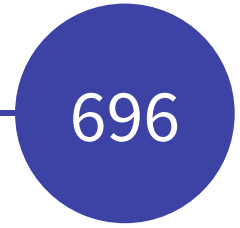
Age Range
11-16 and
11-18 (2023)



Denomination
Academy



Gender
Girls



Number on role:
696

48 Teachers

4 Assistant Principals



EAL



Pupil Premium



SEND



Overall Pupil Attendance

Our students, staff and parents recognise that the provision provided to our pupils is exceptional.

92% of students enjoy learning at Reading Girls' School.
96% of parents would recommend Reading Girls' School to another parent and **100%** of teachers confirmed that behaviour in lessons and around the school is good or better. Therefore, we encourage you to look at our most recent Ofsted report, which can be found on our website.

The school came under new leadership in 2017, and since then the number of students requesting to come to Reading Girls' School has tripled. In September 2019 and 2020, we welcomed an additional 210 students into Year 7 and this September we anticipate being at full capacity with 210 students joining Year 7.

Exam results

Progress 8 Score of **1.0** (IDSR, 2019).

15% of students gained 8 grades 7 - 9.

22% of students gained 5 or more grades 7 - 9.

51% of students gained 8 or more grades 9 - 4 including English and maths.

74% of students gained 5 or more grades 9 - 4 including English and maths.

78% of students gained 5 or more grades 9 - 4.

Every student gained at least **7** grades 9 - 1.

STAFF BENEFITS



Reading Girls' School



**Employee Assistance
Programme**



**Professional development
support**



**Medical Cash
Plan Scheme**



Pension scheme



**Eyecare
Vouchers**



Free parking on site





Our Schools



**Battle Primary
Academy**



**Baylis Court
School**



**Phoenix Infant
Academy**



**Reading Girls'
School**

Our Trust is a multi-academy family of primary, infant and secondary schools located in Berkshire. The Trust, formed in 2015, was created in order to gain strength through working with each other, sharing expertise, resources and knowledge, and this desire for collaborative improvement is reflected in our motto...

'Growing Stronger Together'

As our family of schools grows we are keen to ensure that high academic standards are at the core of our work.






We want our schools to develop further whilst maintaining their own uniqueness. It is this uniqueness that helps to make the Trust a special place to study and to work.

Children are the centre of all our work and we strive to give them the best start in life as this is what they deserve.

In order to achieve this, we work in close partnership with our parents and expect them to support us in challenging their children to be the best they can be in every aspect of their lives.

Thames Learning Trust Central Services

Through a team of committed colleagues, the Trust provides the following services to its schools:

-  School Improvement
-  Financial
-  Human Resources and Recruitment
-  Leadership Support
-  Staff Development
-  Staff Benefits
-  Health and Safety Support and Advice
-  Safeguarding Support and Advice

Our values



**We Work In
Partnership**



**We Value
Uniqueness**



**We Are Quality
Driven**

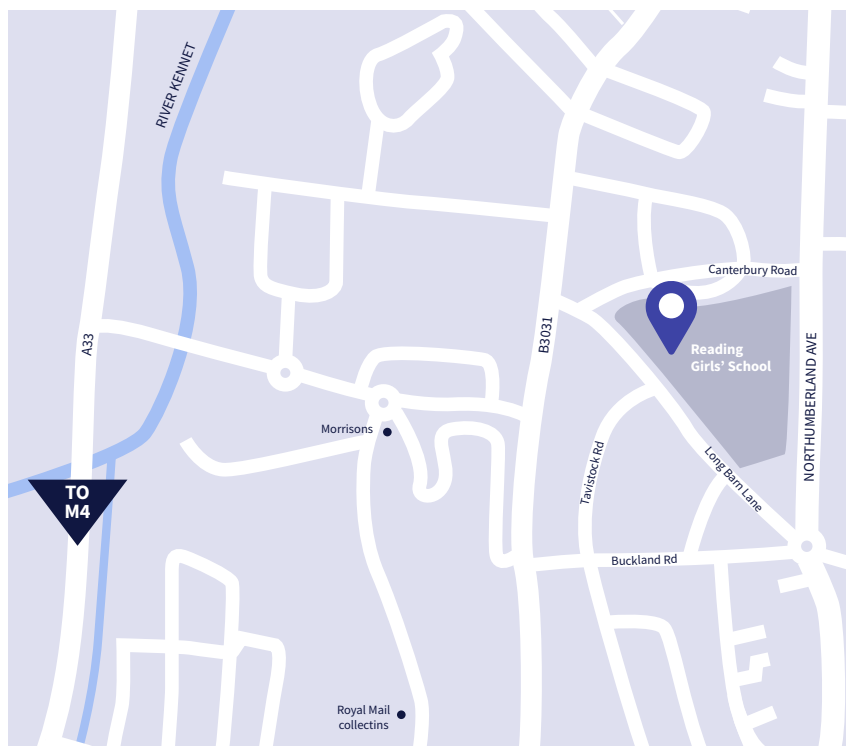


**We Encourage
Development**



**We Put
Children First**

HOW TO FIND US



Bus:

5, RA1

Train:

Crosscountry,
Great Western Railway,
South Western Railway

Reading Girls' School
Northumberland Avenue
Reading
RG2 7PY

T: 0118 986 1336

E: admin@readinggirlsschool.net

www.readinggirlsschool.co.uk

Reading has been named as one of the best places to live and work in the UK.

Reading's location and good transport network make it an excellent place to live and explore our local area. We are only 25 minutes from London and benefit from a cheaper cost of living.

Reading has good road links with easy access to the M3 and M4 motorways, two railway stations (25 minute journey to London) and easy access to London Gatwick and Heathrow airports.

Reading Girls' School is situated in South Reading, very close to the town centre, railway and bus stations. Whilst many staff live in Reading, others are from surrounding areas.



HOW TO APPLY

If you would like to apply for a role at the school, find out more at:
www.readinggirlsschool.co.uk