



BEVERLEY HIGH SCHOOL

Norwood, Beverley, East Riding of Yorkshire, HU17 9EX

Tel: 01482 881658

Email – office@beverleyhigh.net

Web address - www.beverleyhigh.net



GENERAL INFORMATION

Headteacher: Ms Sharon Japp, BA, MEd, NPQH

Location

Beverley High School is pleasantly situated in the centre of the attractive market town of Beverley in the East Riding of Yorkshire. The catchment area is socially mixed and provides a full range of ability, taking students from Beverley and the surrounding villages of Tickton, Walkington, Wawne and Woodmansey.



The Westwood, Beverley

The School

Beverley High School is a Group 6, five-form entry girls' comprehensive within the East Riding of Yorkshire. 851 students are currently on roll including 105 girls in the Sixth Form. The School, founded in 1908, has developed since 1973 from a grammar school into a fully comprehensive 11-18 establishment. The school celebrated its 110th anniversary in September 2018.

We are delighted to share the news with you that in our recent inspection we were given "Outstanding" in every category. The full report can be read here....[Ofsted 2021 - Outstanding](#)

We are obviously delighted that Ofsted has seen what we see every day, fabulous young people working very effectively with our hugely dedicated and highly skilled and knowledgeable staff team. We are proud that the regulator has recognised the very many achievements of our staff and pupils and particularly their acknowledgement that Beverley High School always puts the interests of pupils first, inspires a love of learning, has a culture of high ambition and enables pupils to reach their full potential.

Beverley High School is long established with an excellent record and considerable achievements in academic work, music, drama, art and sport. We are particularly concerned to develop each pupil's good qualities to the full. The school has a long tradition of successful education and enjoys a high reputation within the community, both at local and county level. The school features in the "Good Schools' Guide" and annually receives awards from the SSAT for exceptional results.

Subject departments are housed in purpose-built rooms set amidst fine grounds. We have a dedicated Learning Support Centre and Sixth Form Block, a large Sports Hall with Dance Studio and an impressive Art/Technology Centre.



International Dimension

Beverley High School holds the YHGSA's Global Schools Award which recognises the international dimension in the school. All departments in the school are encouraged to incorporate international/global elements into their Schemes of Work. Opportunity for curriculum development exists, most notably with our link schools and colleges, Keiai Gakuen Senior High School in Chiba, Japan; Sujatha Vidyalaya College, Matara, Sri Lanka; Marcel Aymard College, Millau, France; and most recently Gymnasium Am Kothen, Wuppertal, Germany. Student and teacher visits to Japan and Sri Lanka are a part of school life and we are really hoping that we will continue to visit our links overseas as soon as regulations allow.



Japan
Visit
2018

Pupil Support

Every pupil is assigned on entry to one of five mixed ability tutor groups which are also house groups. Most of the social life of the school takes place within these Houses, for example there are regular inter-house competitions in most sports and for overall progress in academic work.

A pupil usually remains with a tutor group for five years and, where possible, has the same form tutor from Years 7 to 11. Year Leaders are responsible for pupils within a particular year group and an Assistant Headteacher has responsibility for the Sixth Form.

Curriculum Organisation

The tutor groups are, in the main, used as teaching groups in Key Stage 3. In Years 7, 8 and 9 all students follow courses in:

Art
Computing
English
Geography

History
Mathematics
Modern Language
Music

Physical Education
Religious Studies
Science
Technology

Teaching takes place in mixed ability groups, apart from Modern Languages and Mathematics where ability groupings are used. In the latter half of Year 9, parents, pupils and subject teachers are involved in decisions regarding examination courses for Years 10 and 11.



Pupils in Years 10 and 11 follow a broad range of courses which currently are:-

Examined by GCSE	Mathematics		
	English	-	all follow Language & Literature courses
	Science	-	3 separate sciences (Biology, Chemistry and Physics)
	Foreign Language	-	French or German
	RE	-	Short or full course
Not Examined	Physical Education		
	Wellbeing – including Careers Education and Guidance		

Pupils are also able to choose three options from a range of courses which include:-

GCSE	Art and Design	Drama	Music
	Astronomy (new in 2021)	Economics	Photography
	Business Studies	Food	Physical Education
	Child Development	Geography	Product Design
	Computing	History	Textiles
		Media	A second Foreign Language

The majority of students follow 10 GCSE courses or their equivalent



There is a planned programme of Personal, Social and Health Education (Wellbeing) which is taught on specialist days in each term. The Wellbeing programme covers a different range of personal and social skills, as well as further developing those already acquired, with increasing emphasis on careers guidance.

Sixth Form (Years 12 and 13)

In September 1978 the Sixth Form was linked with our neighbouring boys' comprehensive, Beverley Grammar School. The teaching in most advanced level subjects is equally shared between the staffs of both schools. The scheme carries the advantages of widening the range of courses, provides larger numbers in teaching groups and a livelier academic life. Both schools have a lengthy and successful experience of sixth form work and students have benefited from this pooling of resources. Many students continue to Higher Education, including Oxbridge.



Joint Sixth Form Trip to Allerthorpe Lake

Special Needs

The Learning Support Department has a whole-school role based on limited withdrawal and support strategies in curriculum areas.

Work Experience

All year 12 students have the opportunity to undertake work experience.

Extra-Curricular Activities

Choirs, orchestras, drama clubs and games teams practise on a regular basis at lunchtime and after school. Lunchtime clubs include the gym club, wind band, hockey, netball, tennis, trampolining and athletics clubs. We are taking part in the Green Car Project which sees us building our own electric car to race against other schools.

Cross Country Intermediate Team



Green Car Project – Race Day

Trips/Visits

As well as international visits the school's committed staff organise a myriad of trips and visits. Previously pupils have enjoyed theatre visits, theatre workshops, Christmas reward trips to Meadowhall Shopping Centre and Inflatation. In 2019 82 Year 8s and 6 members of staff were provided with an unprecedented opportunity to visit GCHQ's Scarborough campus to learn more about the world of cyber security and espionage. We have a regular residential outward-bound experience for Year 8, where they visit Lakeside in Cumbria. There are many more visits arranged by departments, too many to mention them all. School trips are returning to normal following the COVID-19 pandemic.

French Exchange



DofE Expedition



Management and Development Issues

There is a pre-planned programme of meetings which encompasses departments, Middle Leaders, Wellbeing Team, the Senior Leadership Team and Tutor teams. In addition task groups are used to address specific issues when a need is identified e.g. Assessment, Curriculum Models. The School Improvement Plan is a 1-year plan. Each department or team has their own plan.

CPD and Appraisal

The school has very effective appraisal systems for teaching staff and support staff and is a recognised Investor in People. The school's CPD programme is led by two Research Leads who are Evidence Leads in Education and work closely with Huntington Research School. We are committed to evidence-informed practices. All teachers undertake Deliberate Practice.

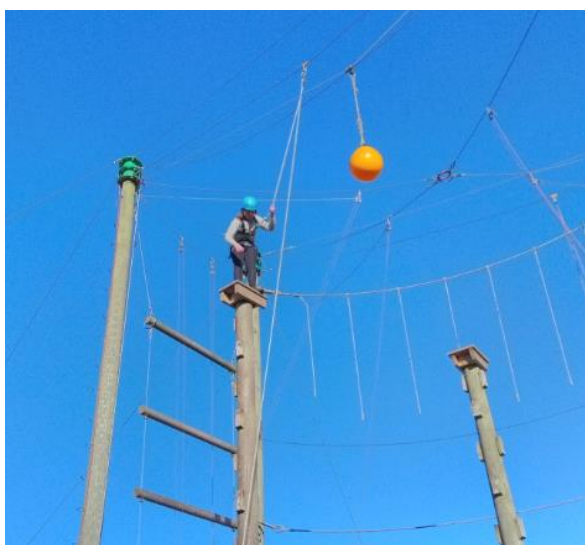
Staff

The school has approximately 100 committed staff, of which 57 are teachers (full and part-time).

Sharon Japp
Headteacher

Autumn 2022

Kingswood Activity Centre



Year 9 Netball Team



Results Day



Zoolab Visit