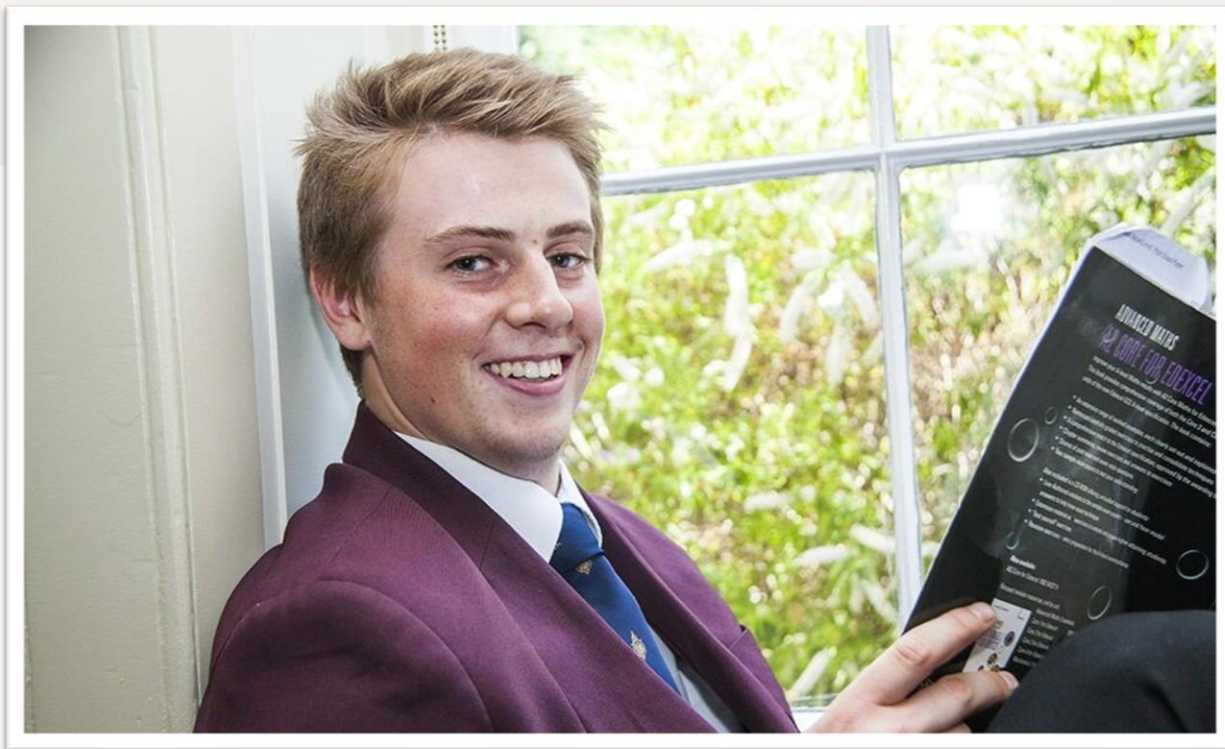


# The Department – Religious Education

## CANDIDATE INFORMATION



## THE SCHOOL

For centuries, The King's School has been committed to academic excellence. Our first mention as an educational institution dates back to 1327, but it was in 1528 that the school was re-founded by Bishop Foxe of Winchester and, since then, has gone on to provide an exemplary education to thousands of boys – one of which was Sir Isaac Newton!

Although we are incredibly proud of our heritage, we adopt a forward-thinking approach to education. We are keen to recruit and train our colleagues in order to provide the best possible opportunities for our students during their time in school and beyond.

We believe that a student's education extends further than their academic attainment, and we work to ensure that our boys are also equipped with tools to help them navigate adulthood, as well as the qualifications they need to succeed. As a Grammar School, we endeavour to enable our students to achieve the highest grades and enter the most competitively sought-after universities, careers and professions.

## OUR AIMS

We aim to inspire intellectual curiosity, encourage a competitive spirit and develop creative thinking. We foster social responsibility and leadership skills within our students and a strong sense of community underpins everything we do. We value commitment, we celebrate success, and we offer an environment which not only leads to academic success but also to self-discovery and a sense of personal worth.

## THE POST

We are seeking to appoint an inspirational and dedicated Teacher of RE to join a school that has high expectations and high aspirations for all of our students and who will fit in well with our thriving and forward-thinking department. The post would suit a committed and skilled teacher who wants to make a difference and help all our students achieve the highest possible standards.

## THE DEPARTMENT

The Religious Education (R.E.) Department is comprised of 1 full-time and 1 part-time teaching staff.

The R.E. curriculum has been designed to engage students on a personal journey. Our mission is to empower the students to build their own authentic worldview to become fully actualised individuals and active citizens. The department's work and ethos contributes to the promotion of the pupils' spiritual, moral, social and cultural development:

In the classroom the emphasis is on group work, discussion, negotiated objectives, self and peer assessment. We believe this approach facilitates personalised learning and allows for the development of genuine independent learning skills. The use of questioning and discussion to clarify understanding is a positive feature of most lessons.

At Key Stage 3 the students receive one lesson per week and at Key Stage 4 the students receive one

lesson per fortnight unless they have chosen to study the subject as a GCSE option.

At Key Stage 4 we offer AQA Religious Studies (8062) and at Key Stage 5 we offer the AQA A level Qualification. From September 2024 it is proposed that this Department will have the capacity to deliver A level Sociology as a new option for our Sixth Form Students.

Our department is well-resourced and offers many opportunities for students to embellish their education in Religious Education outside of the school grounds. Innovative teaching methods and new ideas for the future development of the course are always welcomed and encouraged. Our ideal candidate will add to this forward-thinking approach.

## ASSESSMENT & LEARNING

The school aims to deliver outstanding lessons, inspire curiosity, and develop students' genuine interest in their subjects.

Every class is taught in a way to prepare students for their examinations. Ongoing assessment, both teacher and peer, is a key element of the department's approach and the use of both formative and summative assessments on a regular basis provides vital information. Staff can initiate intervention strategies for areas where students require extra support, and their progress can be easily tracked. All members of the department are expected to use 'assessment for learning' strategies to inform their lesson preparation and teaching. The department assesses all work in terms of effort and attainment to further stretch gifted and talented students and provide additional support where needed.

Students are assigned homework once per 6 lessons in years 7-9. Key Stages 4 and 5 are expected to complete set homework where appropriate, being theory or project-based. Feedback is carried out quickly and accurately and is based on examination criteria where appropriate.

