

A CHURCH OF ENGLAND MULTI-ACADEMY TRUST
DEDICATED TO TRANSFORMING CHILDREN'S LIVES



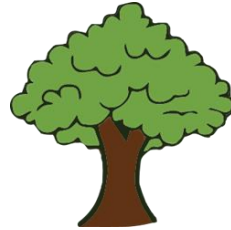
Ruskington Chestnut Street Church of England Primary Academy
Teaching Assistant



Teaching Assistant

SALARY

Grade 3, Points 6 - 9 (£24,796.00 - £25,989.00 FTE)
£13,243.10 - £13,880.26 (Pro rata)



HOURS

23 hours per week, 39 weeks per year

Term time plus inset days

(Monday to Friday 8.30am - 12.30pm and additionally Tuesday and Friday
1.00pm - 2.30pm)

START DATE

June 2026

LOCATION

Ruskington Chestnut Street Church of England Academy

APPLICATION DEADLINE

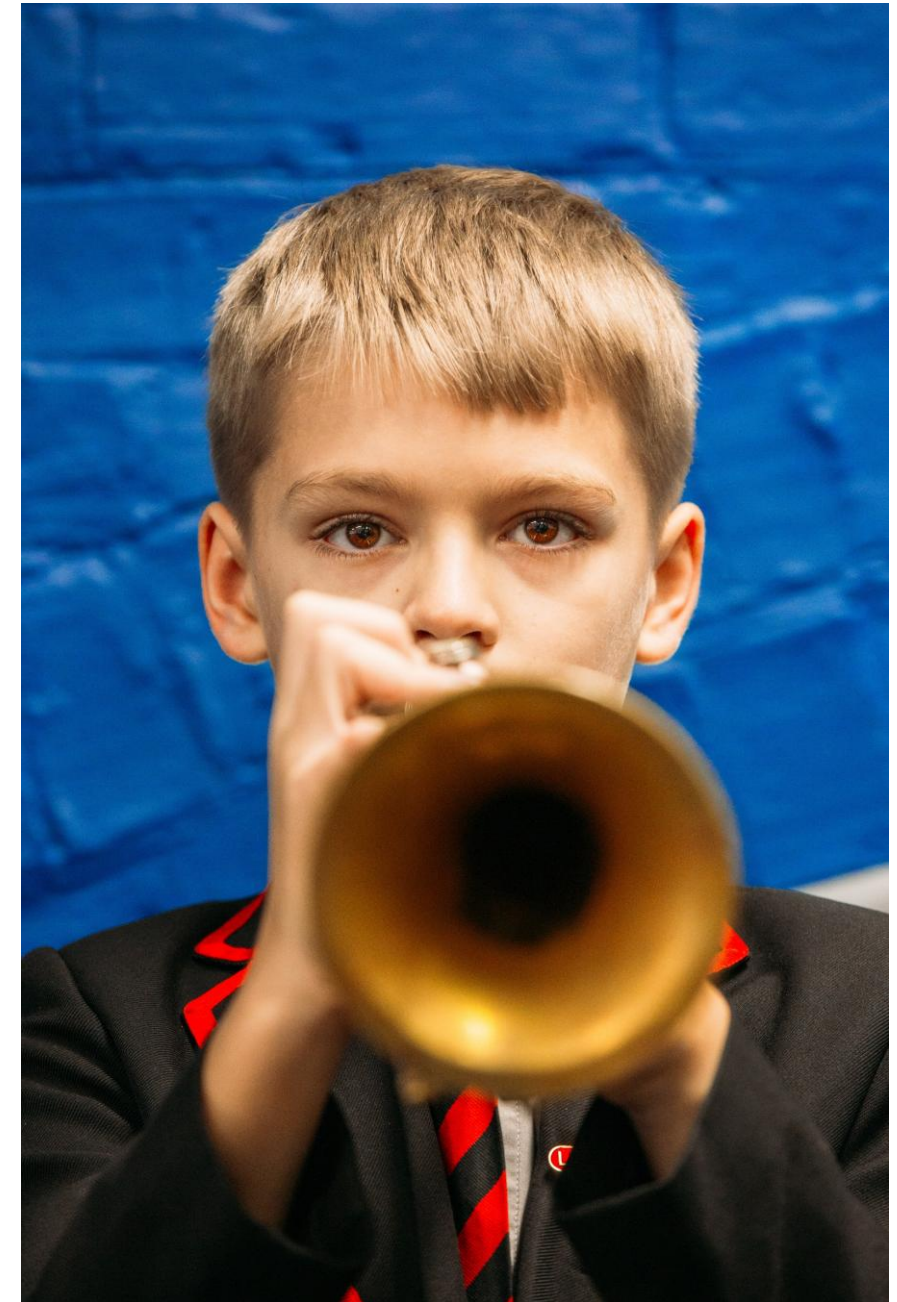
Friday 1st May 2026 (midday)

INTERVIEWS

Monday 18th May 2026 (details to be confirmed)

For an informal discussion about the role, or to arrange a visit,
please contact Ruskington Chestnut Street Church of England Primary
Academy on enquiries@chestnutstreet.laat.co.uk or on 01526 832424

Please go to [My Trust Careers](#) to apply



Welcome from the CEO of The Trust – LAAT

Be a part of something bigger...

Dear Candidate

What if every child was unique with **intrinsic value**? What if every member of staff was unique with intrinsic value? What if every school was **unique** with intrinsic value? At LAAT we believe that they are.

We're a **Church of England** trust so we call it being made in the image of God. But you don't have to. You just need to be able to look at our children and young people – however deprived or privileged, however difficult or compliant, whatever their background, or ability, or culture, or gender – and know that what you do, how you teach them, what you give to them, how you relate to them can **transform** their lives. And then you must have the energy, and passion, and drive, to give them your best.

We don't ask you to do this alone. We'll provide you with the **support** of a MAT who believes that you too are unique and **valuable** – valuable for who you really are.

So, is now the time to think hard about what you want and to look at what Greater Lincolnshire and Lincoln Anglican Academy Trust can offer you? A chance to grow your career, **professional support** and the opportunity to transform lives.

Within fabulous **Greater Lincolnshire** with its beautiful beaches, woods, Wolds, fields and fens its 2-university city and its access to new and growing technologies. Its **reasonable priced houses** and home to the Red Arrows.





Is now the time to find out more about us and to join our **community of Excellence, Exploration and Encouragement?** To change lives with us, for the better .

Jackie Waters-Dewhurst
Chief Executive Officer

The Trust is committed to safeguarding and promoting the welfare of children and young people and expects all staff and volunteers to share this commitment. We will require the successful applicant to undertake an enhanced criminal record check via the DBS.



What our Colleagues say about us...



'I have never been happier in a job than I am in this one. I feel extremely well supported by the Trust and colleagues in school and know that this school has been able to make rapid improvements in part due to the support we have had from Trust colleagues'

"SLT are caring and understand us as humans that have issues out of school. We are treated fairly and as part of a family' 'The Christian values of our school are lived out by stakeholders' 'As much is done as possible to support mental health and work / life balance"

'Just think we are flippin' awesome! We have passionate and dedicated teams and enable staff and children to flourish. I love my role and I am proud to be a part of this Trust. I wouldn't want to work anywhere else'

'Good working relationships, easy to talk to senior staff at school and trust level, supportive culture, wealth of knowledge and experience within the trust' 'Our links to our community, the children and parents. The support from the trust with curriculum'

'I like being part of a Christian school. I like how daily worship is valued. I appreciate the staff team in the school I work in. I appreciate the health care package and online health support'

'The sense of shared purpose to make changes for children to improve their life chances'

Benefits of working in our Trust

We see you and believe that you deserve the very best

We firmly believe that, to ensure the best outcomes for our pupils, we must ensure the best support and career development for our colleagues.

We provide opportunities from initial teaching training to supporting Headteachers who wish to take on Executive Headship, Specialist Advisor roles or supporting wider Trust work.

All colleagues benefit from bespoke learning journeys to ensure that we are not only compliant with our statutory responsibilities, but so that our colleagues can be confident in fulfilling all aspects of their role to the highest standard.

Our focus on **Growth and Development** rather than 'performance management', ensures that all colleagues are empowered to do their job to the highest standard and cements our commitment to the continuous support and development of our colleagues, enhancing their skills and knowledge.

LAAT has signed the [Department for Education's \(DfE\) Education Staff Wellbeing](#), joining schools and trusts across the country in making well-being the heart of education, reaffirming Commitment to a Culture of Care.

All colleagues have access to;

- Over 70 online courses to support development
- 24 hour confidential helpline covering legal, financial and health and wellbeing guidance
- Free of charge counselling sessions
- Virtual GP - Accessible by smart phone, or computer with same day appointments
- Local Government Pension or Teachers Pension Scheme
- Competitive annual leave entitlements for support staff colleagues
- Favourable T&Cs for all colleagues to include enhanced HR policies for all colleagues
- Opportunities for PPA at home for most teaching roles
- Internal and external CPD and Networks for all colleagues
- Employee benefits from Specsavers and Halfords – cycle to work scheme



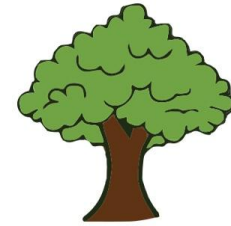
We have signed up to the
education staff wellbeing charter
because staff wellbeing matters



About Ruskington Chestnut Street Church of England Academy

Care – Believe - Grow

At Ruskington Chestnut Street Church of England Primary Academy we believe each individual is capable of great things. We work together in friendship, challenging ourselves and each other to be the best we can be. We aim for 'life in all its fullness'; striving to make the world a better place through our vision of Care – Believe – Grow. We all demonstrate how we care, believe and grow through our six Christian values of: trust, compassion, perseverance, respect, forgiveness and honesty.



Ruskington Chestnut Street is a happy, welcoming and caring Church of England school where we value each individual for who they are. All of our pupils are offered a wide range of activities as part of the school day within the curriculum.

The Early Years Foundation Stage is a very important phase within the school, and we aim to provide children with the best possible start to their education which is followed through to when the children leave prepared for the next phase of their education. Children are at the heart of everything we do at Ruskington Chestnut Street working in partnership with parents/carers to ensure that we provide the best education we possibly can.



Job Description

To work with teachers to support teaching and learning, providing general and specific assistance to pupils and staff under the direction and supervision of the classroom teacher

Key Tasks and Responsibilities

Work with individuals or small groups of pupils in the classroom under the direct supervision of teaching staff and provide feedback to the teacher.

Support pupils to understand instructions and support independent learning and inclusion of all pupils.

Support the teacher in behaviour management and keeping pupils on task.

Support pupils in social and emotional well-being, reporting problems to the teacher as appropriate.

Prepare and clear up learning environment and resources, including photocopying, filing and the display and presentation of pupils' work and contribute to maintaining a safe environment.

Teaching Assistants in this role may also undertake some, or all of the following;

Record pupil data as required

Support children's learning through play.

Assist with break-time supervision including facilitating games and activities.

Assist with escorting pupils on educational visits.

Support pupils in using ICT.

Invigilate exams and tests.

Assist pupils with eating, dressing and hygiene, as required, whilst encouraging independence.

Support pupils on a one-to-one basis in line with the requirements of an EHCP



To present a positive personal image, contributing to a welcoming school environment which supports equal opportunities for all.

To perform, in accordance with any directions, which may reasonably be given to you by your Line Manager or Headteacher from time to time, such particular duties as may reasonably be assigned.

Other

The duties and responsibilities in this job description are not exhaustive. The postholder may be required to undertake other duties that may be required from time to time within the general scope of the post. Any such duties should not substantially change the general character of the post. Duties and responsibilities outside of the general scope of this grade of post will be with the consent of the postholder.

The postholder is required to carry out the duties in accordance with LAAT Equal Opportunities policies.

The postholder is required to carry out the duties in accordance with the LAAT Health and Safety policies and procedures.

All employees need to be aware of the possible abuse of children and vulnerable adults and if you are concerned you need to follow the Academies' Safeguarding Policy. In addition, employees working with children have a responsibility to safeguard and promote the welfare of during their work.

The LAAT Trust promotes diversity and wants a workforce which reflects Christian Values. Applications are welcome from all, irrespective of gender, sexuality, race, religion, marital status, age, or disability.



Person Specification

Selection decisions will be based on the criteria outlined below. At each stage of the process an assessment will be made by the appointment panel to determine the extent to which the criteria have been met. When completing your application paperwork, you should ensure that you address each of the selection criteria and provide supporting evidence of how you meet the criteria through reference to your work or relevant experience.

Training/Qualifications/Experience

	Essential	Desirable
Experience of working with children in an educational environment		*
Experience of working with or caring for children	*	
5 GCSE's with a minimum grade C or above in English and Mathematics or equivalent qualifications	*	
NVQ Level 2 or Equivalent or working towards	*	

Professional knowledge and understanding

Knowledge of Safeguarding Procedures	*	
Good listening, oral and literacy skills	*	
Understanding and knowledge of the support required to meet the differing needs of children	*	
Basic knowledge of first aid		*
Ability to use appropriate judgement to seek and clarify detail where appropriate and escalate issues when necessary	*	
Awareness of the sensitivities of information and ability to apply confidentiality and discretion	*	

Safeguarding Children

Current Safeguarding Training		*
Enhanced DBS Clearance	*	
Awareness of the importance of safeguarding and promoting the welfare of children	*	
A commitment to maintaining up to date knowledge of child protection legislation and guidance	*	

Personal and Professional Skills and Attributes

Empathy with the mission and vision of the Church of England and the Diocese of Lincoln	*	
Positive attitude towards personal development and training	*	
A commitment to developing children as independent learners	*	
Demonstrate effective teamwork skills	*	

Approach to work - Candidates should

Have flexibility to changing demands as needed	*	
Prioritise as required to meet the demands of the role	*	
Have attention to detail	*	

Behaviour Competencies - Candidates should

Be respectful and able to act with tact and diplomacy	*	
Be empathetic and demonstrate an awareness of the differing needs of colleagues and pupils	*	

Other – Candidates should:

Be a positive role model	*	
--------------------------	---	--

Our commitment to you



We believe that all our Schools are fantastic places to work. Our commitment to you is important, throughout the recruitment process and beyond. Our culture is one of development, equality, and consistency. We aim to demonstrate this through the below:

Transparency – we will treat you with respect, honesty, and fairness.

Protecting your privacy – we will ensure your information is secure and handled sensitively and in line with our Privacy Policy for prospective staff.

Showcasing talent – we'll provide a good opportunity for you to share your skills, experience, and potential.

Feedback – we will provide constructive feedback professionally.

Listening – we welcome feedback.

We hope to ensure that you have a positive experience throughout the recruitment process by:

- Providing you with clear, accurate and timely information.
- Giving you the opportunity to ask questions – and providing you with answers.
- Following a fair assessment process

Please see link to our privacy notice for prospective candidates:

[Opportunities - LAAT \(thelaat.co.uk\)](https://thelaat.co.uk)

To apply, register interest or get live updates of all our current vacancies please visit

[My Trust Careers](#) and create an account.

In line with Keeping Children Safe in Education, please be advised that if shortlisted, we will carry out internet searches to support our commitment to safer recruitment. Please note that the purpose of this is to identify any incidents or issues that have happened, and are publicly available online, which the school might want to explore with applicants at interview. Internet searches will be carried out by someone who is not directly involved in the recruitment process and only relevant information will be shared with the interview panel.

