



Careers at SHARE Multi- Academy Trust

Teaching Assistant

**Millbridge,
A SHARE Primary Academy**

Application Pack



Valuing People, Supporting Personal Best

Welcome to SHARE Multi-Academy Trust, a supportive and close-knit family partnership of eight academies across West Yorkshire, and a Teaching School Hub.



At SHARE, we are committed to delivering strong educational standards within our academies and providing our people with excellent careers. This is all underpinned by an unwavering commitment to our vision of *Valuing People, and Supporting Personal Best.*

I believe our role as educators is to help children and young adults to instil a desire to learn, to overcome barriers to success, and to encourage an ambition to achieve. To reach this standard, we must first deliver for our people and ensure they feel valued, listened to and have a strong sense of belonging. In turn, our colleagues, pupils, and society all benefit enormously.

Two of our guiding principles are that 'quality is our driving force', and 'teams drive success'. We know that recruiting and retaining an outstanding workforce is fundamental to achieving our aims. We therefore make it our mission to ensure every colleague within the trust has access to exceptional training and personal development opportunities, alongside a positive teaching environment, clear and ambitious progression pathways, and highly competitive packages.

We are also committed to sharing best practice across our trust, creating networks for colleagues to learn from one another, and fostering a learning environment and workplace where everyone feels supported and inspired, and can truly thrive. As a result, we are proud to be an employer of choice.

Thank you for your interest in our academies and trust. I hope you will consider joining us as we continue to deliver the very best education for our pupils. Whether you are an education practitioner looking to start your journey, or an established professional wanting to bolster your career – we look forward to working together soon.

John McNally

Chief Executive Officer
SHARE Multi-Academy Trust

We must first deliver for our people and ensure they feel valued.

Quality is our driving force



Teams drive success



We are proud to be an employer of choice.

ABOUT US

TESTIMONIALS

JOB DETAILS



About our Trust

SHARE Multi-Academy Trust was first established in 2014, and since then, we have built a solid reputation for high standards and strong achievements.

We operate four successful primary academies and four high-performing secondary academies across the region. Our outstanding provision is supported by our Calderdale and Kirklees Teaching School Hub and national training accreditations, which enable us to deliver exemplary training and development opportunities for education practitioners at every stage of their career, from initial training to executive leadership.

Our academies achieve excellent outcomes across the board. This includes academic attainment and school improvement, as well as maintaining exceptionally high standards in all aspects of school life including behaviour and attendance.

As a result of the trust's supportive and inclusive approach, senior leaders invest significant time in supporting positive pupil behaviour and attendance. Our pupils attend well and are positive about learning. In turn, this creates a positive and respectful teaching and learning environment for staff, with teachers able to focus on delivering an excellent education to students without distraction, and with a manageable workload.

Whilst being close-knit, we are ambitious for the future.

We are always looking for additional ways to expand our positive impact, be that by working with new schools on exciting initiatives, or by collaborating with our talented team of staff.

Our aim has long been to be the best trust, not the biggest. Our priority for the future is to keep improving standards, building on our successes, and raising aspirations so we can support even more pupils to achieve even better outcomes.



“

Behaviour is excellent, and there are high levels of mutual respect and tolerance amongst pupils and staff.

*Ofsted, 2023**

”



ABOUT US

TESTIMONIALS

JOB DETAILS



**2023 Ofsted report for Thornhill Community Academy, A SHARE Academy*

Your Career at SHARE

Our vision of ‘Valuing People, Supporting Personal Best’ underpins everything we do. Central to our work and ability to deliver a transformational education, is our dedication to developing our greatest asset, our staff.

That is why we have an outstanding pledge to teachers and support staff to provide professional development and training opportunities, particularly through our Teaching School Hub. We are committed to investing in our staff, ensuring that they have fulfilling careers and enjoy their jobs every day. This is fundamental to our ability to turn academies around and deliver the very best education to pupils.

We offer a competitive package to all our colleagues.

We have committed to offering our colleagues pay and conditions that are at least as good as those available to colleagues in maintained schools. In practice, we often exceed them. We continue to contribute to the generous Teachers and Local Government Pension Schemes and at least match pay awards agreed or recommended by the Local Government Association and School Teachers’ Pay and Review Body. We use the flexibilities available to us as an academy to enhance our offers where we can.

As well as two generous pension schemes, we also offer employee assistance and wellbeing packages; and flexible and family-friendly policies, such as flexible working, shared parental leave and enhanced maternity, paternity, and adoption entitlement, giving colleagues the control and freedom to work in a way that suits their needs. We offer incremental progression and cost-of-living pay increases, subscribe to local and national discount schemes, and provide exceptional onsite catering facilities.



We work as a collective group of professionals to achieve common goals. Watching new teachers and leaders become established in their roles gives me an immense sense of professional pride, as they help our pupils to achieve excellent outcomes.

Jack Wyatt

*Associate Principal
Shelley College*



ABOUT US

TESTIMONIALS

JOB DETAILS



Our Shared Vision and Mission

Our Mission

We believe education is all about people. Our success is measured in how we help our pupils. We can only attain this success by employing talented, committed staff, and working in partnership with our whole academy communities.

Our mission means we endeavour to ensure every one of our pupils and members of staff enjoy coming to our academies, and that all of us try our very best in everything we do. We help everybody, regardless of background or starting point, to gain the knowledge, skills, and habits that lead to happy and successful lives, both now and in the future.

Our Vision

We want to transform education for the better, raising aspirations in diverse communities, increasing knowledge, and developing the skills that children and young people need to make their lives rewarding and successful.

Our vision is for our teachers and staff to continue to choose our academies and our trust as a working environment where, through our high-quality training and progression pathways, they can achieve their career aspirations. Our academies will be the first choice for parents because we provide a safe and nurturing environment, with excellent academic standards and a wealth of opportunities. Our trust will continue to be a well-regarded family network where other schools choose to join us, benefiting from strong support services, collaboration, and best practice sharing.

“ We live by our vision of 'Valuing people, Supporting personal best', bringing this to life in everything we do. We are all part of a family that has high expectations and a strong moral compass ”

Jenny Carr
*Executive Principal and
Headteacher, Royds Hall*

ABOUT US

TESTIMONIALS

JOB DETAILS



Our Guiding Principles



We have a clear and ambitious strategy as a trust, so that we can ensure we collectively fulfil our overarching vision and mission. This is built upon our guiding principles, with distinct goals and objectives linked to accountability and performance measures.



Academies



Our secondary academies



Our primary academies

Click below to select the location of the vacancy you are interested in to find out more.



[ABOUT US](#)

[TESTIMONIALS](#)

[JOB DETAILS](#)



**Most recent Ofsted prior to academisation in 2022*

Our Outcomes

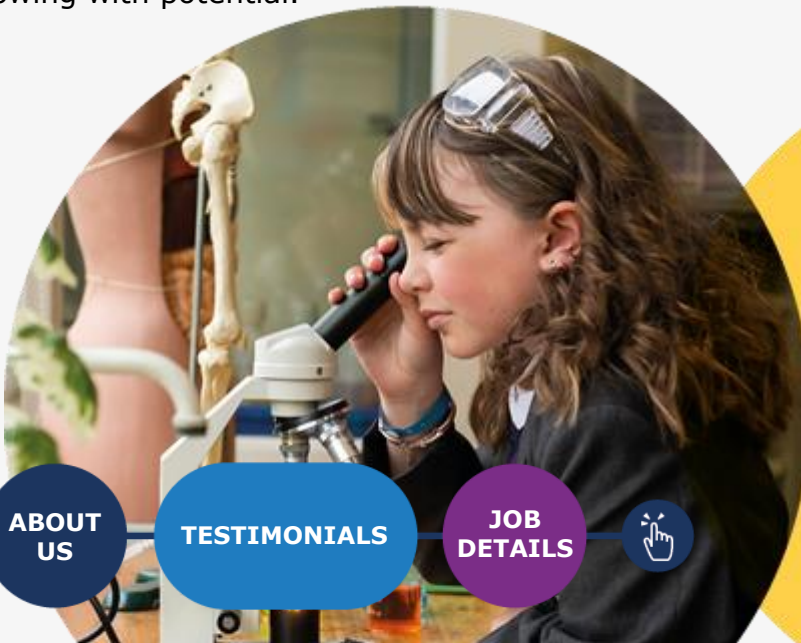
At SHARE, we are proud of the high standards and expectations we set and uphold, across the board. Consequently, we consistently surpass both national and regional school results. Our academies consistently secure excellent academic outcomes, with achievement levels being amongst the highest in our region.

Supported by robust, well-resourced, and accountable improvement plans, we have a proven track record of significantly improving our academies, as reflected in national performance measures and our strong Ofsted outcomes.

Through our broad curriculum, first-class careers education and guidance, and our wide-ranging enrichment offer, we successfully prepare our young people for life beyond the classroom. We ensure no child is left behind, and do so by fostering a safe, inclusive, and nurturing environment where all barriers can be overcome.

We remain committed to developing our staff, who are our greatest asset in achieving our mission.

Alongside our successful Teaching School Hub and training accreditations, we take great pride in one another's individual successes. Many of our most senior leaders have progressed through the routes. That includes the countless colleagues who have enjoyed varied, rewarding, and long careers with our academies and trust, as well as those who are just starting on their journey and are glowing with potential.



**ABOUT
US**

TESTIMONIALS

**JOB
DETAILS**



What our colleagues say



“

Since joining SHARE as an RQT, the trust has always supported me in my career, giving me ample opportunity to develop and demonstrate my skills, whether through official training courses such as the National Professional Qualification (NPQ) or by offering opportunities to deliver CPD and build leadership skills.

My career progression at SHARE has been rapid thanks to the encouragement of leaders. With every role I have applied for, or training opportunity considered, leaders have always been approachable, supportive, and encouraged these conversations.

There are regular opportunities within the trust to try new things and gain experience in areas that interest us. **I am really glad I joined Share MAT because the culture of recognition, support, and celebration gave me the confidence I needed to chase my career goals.**

Lewis Day

Trust Improvement Leader (Personal Development); PSHE Leader; Teacher of English at Shelley College

”

“

The care and support that has been provided during my time with the trust has not only allowed me to help make a difference to young people's lives but it has **enabled me to excel in a fantastic career and in a role which is so fulfilling.** It has been life changing!

Melanie Delaney-Hudson

Assistant Headteacher (SEND and Inclusion), Thornhill Community Academy

”



ABOUT US

TESTIMONIALS

JOB DETAILS



What our colleagues say



“

Alongside being part of the central trust team, **I enjoy getting the chance to meet and work with other colleagues across the trust.** I started as an apprentice and every year SHARE has helped me to progress further, either by supporting me with professional development in the form of external or internal training, which constantly bridges the gap to progress onto the next level when the opportunity arises.

”

Kieran Miller-Walker
Finance Officer, SHARE
Multi-Academy Trust



“

As Phase Leader, I am pleased to be able to support other teachers with passion and excitement to help them lay the foundations that mean pupils thrive throughout their educational journey.

Being a part of the Share MAT family, means there is always a vast amount of knowledge, guidance and support available. The trust annual training day on the first day back really makes you feel like part of a team, with common goals to provide a unique learning journey for all children.

Ben Modeste
Phase Leader of Lower Key Stage 2,
Luck Lane Primary School

”

ABOUT US

TESTIMONIALS

JOB DETAILS



First-class careers, through bespoke training and support

Our success as a trust depends entirely on our colleagues who are the bedrock of all we do. That's why we're determined to recruit and retain the best staff by offering first-class training and support, alongside highly competitive packages.

Across the trust, we pledge to deliver outstanding professional development and training opportunities that are bespoke for our teaching and support staff. We support colleagues through ongoing training, coaching, and mentoring using the latest evidence-based research, to strengthen their expertise.

Alongside career pathways carved out for our support staff, we similarly offer a variety of progression and promotion routes for teachers. In addition to the traditional progression journey, we deliver a full suite of specialist and leadership National Professional Qualifications (NPQs), offer Lead Practitioner positions for those with classroom-based preferences, alongside middle and senior leadership training programmes for new and aspiring leaders. With additional development opportunities for staff including research projects, subject enhancement training, and access to The National College online development platform, we are dedicated to supporting our staff to develop and grow as educators.

We also champion cross-trust collaboration and best practice sharing, maximising the opportunities and expertise available across our schools. All colleagues are encouraged to meet regularly, including through various forums where they can discuss ideas, and share experiences and resources.

We are committed to protecting our staff's wellbeing by providing the support, guidance, and training needed to achieve the highest standards they are capable of.

Just as we encourage our pupils to achieve their personal best, we want the same for our staff, with colleagues having their own personal development plans.



ABOUT
US

TESTIMONIALS

JOB
DETAILS



Endless opportunities through our **Teaching School Hub and Training Accreditations**



Our commitment to professional development and raising opportunities and aspirations in the communities we serve and beyond, is best reflected through our Teaching School Hub and Training Accreditations.

We are immensely proud to be the Teaching School Hub for Calderdale and Kirklees, enabling us to connect with, shape, and inspire teachers and practitioners of the future.

Through our Teaching School Hub and training platforms, we induct Early Career Teachers (ECTs) into the profession through an outstanding Initial Teacher Training programme. All our academies similarly play an important role in supporting trainee teacher placements through the Hub and with other local trainee teacher providers. We also offer a full suite of specialist and leadership NPQs through the Hub, including for staff themselves to facilitate Early Career and NPQ frameworks.

Since its launch, we are delighted that 1,000 new teachers have progressed or are progressing through our Early Careers Framework Course, with over 600 studying NPQs. We also continue to provide the Appropriate Body Service for nearly 500 new teachers.

Having the Hub as a central part of our trust family means it continually informs our approach to staff development and how we can enhance our training based on learnings and insights. It has also shaped our approach in recognising that development is a long-term, meaningful investment in our colleagues and therefore our pupils.

Since the launch of the hub...

1,000 teachers
have progressed or are progressing through the **Early Career Framework**

600 teachers
are studying **NPQs**

500 teachers
using our **Appropriate Body Service**

ABOUT US

TESTIMONIALS

JOB DETAILS



JOB ADVERT

Job title:

Teaching Assistant

Academy:

Millbridge, A SHARE Primary Academy

Headteacher:

Rhona Pleasant, Head of School

Section:

Support Staff

Reporting to:

Assistant Headteacher

Contract type:

Permanent **Fixed Term** (with a view to becoming permanent)

Time commitment:

Full time, 32.5hrs per week, term time plus 5 days
Fixed Term until January 2026 with a view to becoming permanent.

Band/Range:

Band D, SCP 7-11, Term Time + 5 days

Further salary information:

£19,576 - £20,866 actual salary range



ABOUT
US

TESTIMONIALS

JOB
DETAILS



JOB ADVERT

Academy information:

Rated Good by Ofsted in 2021, Millbridge, a SHARE Primary Academy, continually strives to provide its pupils with the very best education possible. It does this by having high expectations, and children always giving their best.

Millbridge is one of eight academies within the well-regarded and high-performing SHARE Multi-Academy Trust. The academy is situated within a close-knit, diverse community, and is in good commuting distance from Leeds, Huddersfield, and Wakefield. The academy is proud to offer:

- A supportive and ambitious environment where all pupils are encouraged to go beyond what they think they can achieve and to enjoy learning, helping them to lead successful, healthy and happy lives.
- A vibrant place to work which equips staff to deliver their best every day, under the strong belief that Valuing People, Supporting Personal Best is the key.
- A commitment that staff are happy, engaged and well supported at work, taking pride in pupils' attendance, behaviour, progress and development as well as their own.
- Excellent training and guidance relevant to individual job roles, so expectations are understood and staff are motivated.
- Great benefits, as an employer of choice, including outstanding CPD, supportive line management, and meaningful networking opportunities across the trust to aid personal development.
- Supportive leadership, encouraging healthy work-life balance.
- A high-quality teaching and learning environment, alongside good facilities.
- A culture where children are happy, settled and confident, accessing a broad and balanced curriculum which provides a memorable educational experience for pupils and staff.

ABOUT
US

TESTIMONIALS

JOB
DETAILS



JOB ADVERT

We are looking to recruit:

We are looking to recruit an enthusiastic and excellent individual to join our team of Teaching Assistants. The ideal candidate will support the class teacher with the overall delivery of the Curriculum by undertaking work/care/support programmes in order to enable access to learning for all pupils.

They will be involved in delivering engaging learning experiences that encourage pupils to think for themselves, whilst ensuring they see a purpose to their work. A wide range of learning styles are used to ensure personalised learning is at the heart of what we do.

The ideal candidate will:

- Have Maths and English to GCSE Grade C or equivalent;
- Have previous experience of working with children/young people;
- Love encouraging, motivating and inspiring young children through the support they give in order to encourage their learning;
- Be committed to our ethos that all pupils can achieve at our SHARE Primary Academies;
- Have experience of working with children who have SEN/EAL;
- Have an understanding of behaviour management;
- Have great references demonstrating they are a suitable candidate, safe to work with children.

For more information, get in touch with:

Julie Snellgrove, Admin Manager, Millbridge Academy, 01924 668836.

Email: julie.snellgrove@sharemat.co.uk



JOB DESCRIPTION

Overall purpose of the role:

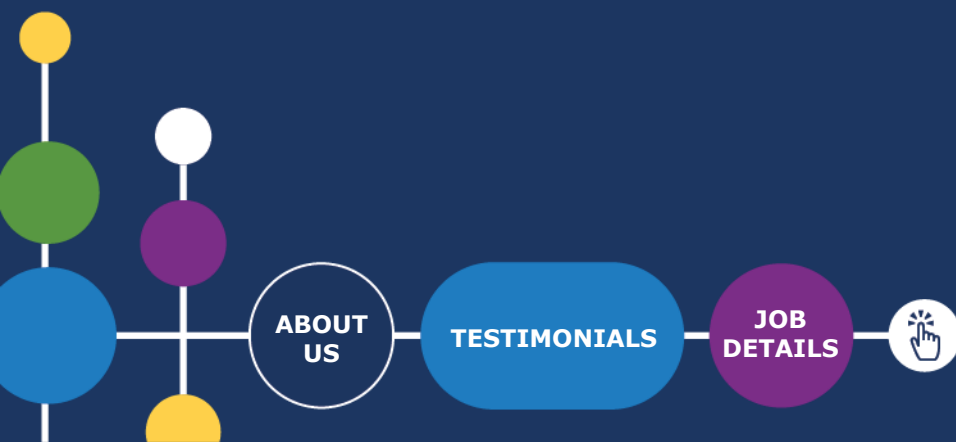
Assisting the teacher in the overall delivery of the Curriculum, undertaking work/care/support programmes to enable access to learning for all pupils and assist the teacher in the management of pupils in the classroom.

Safeguarding requirements:

This post requires the post holder to work in settings with children and young adults.

Any employment offer is therefore subject to the results of an Enhanced Disclosure from the Disclosure and Barring Service (DBS). People who may have contact with younger children (i.e. primary school age) are also required to complete a declaration about family or other members of their household.

Applicants **MUST** complete the MAT's standard application form to be considered, will be required to provide evidence of identity and qualifications and offers of employment will be subject to satisfactory references. For applicants who work or have recently worked in a school, one of the references must be from the Headteacher.



JOB DESCRIPTION

Key Outputs:

1. To undertake duties in accordance with school practices and procedures, ensuring the post holder actively upholds and promotes the philosophies of the school.
2. Under the guidance of the teacher, supervise activities and assist with the general management and control of pupils across all key stages as required and during the school day including lunchtime.
3. Under the guidance of the teacher, support within a key stage, to deliver either one to one work or to small groups, preparing resources and feeding back to teaching personnel.
4. To participate in and assist in supervision of educational visits, in conjunction with the teacher/line manager.
5. To promote good pupil behaviour, dealing promptly with conduct and incidents in line with established policy and encourage pupils to take responsibility of their own behaviour.
6. To undertake relevant training and development as required from time to time by the Headteacher or Governors, and be involved in ongoing development reviews of skills and competencies.
7. To attend and contribute towards the daily departmental briefing and other meetings as required.
8. To actively encourage the inclusion of all pupils to participate in the life and activities of the school and access the national curriculum to the best of their ability.
9. To provide individual assistance or assistance within groups through Pastoral Support, EHC plans, SEN support and teaching strategies etc, to maximise their achievements.
10. To provide information via CPOM's of incidents or occurrences to teachers & senior staff.
11. To work flexibly across key stages as required alongside the teacher to monitor and assess pupil progress towards achievement of SEN targets as identified in MSP or ANP.
12. To act as a key person with an overview of the care needs of specific pupils. This would include acting under the direction of the SENDCo to coordinate the medical and personal care needs of the pupil.

ABOUT
US

TESTIMONIALS

JOB
DETAILS



JOB DESCRIPTION

13. Under the direction of the teacher, assist in the delivery of the structured and agreed learning activities/teaching programmes.
14. Carry out your duties with due regard to current and future school policies, procedures and relevant legislation.
15. Have an understanding of the importance of lesson planning, contribute to lesson planning and learning objectives to develop learning.
16. Contribute to and uphold the vision and ethos of the academy.
17. Recognise own strengths and areas of expertise and use these to advise and support others.
18. Promote team work within the team, working in partnership to ensure effective working relations.
19. Treat all users of the academy with courtesy and consideration.
20. Be aware and comply with all academy policies at all times. As part of your wider duties and responsibilities you are required to promote and actively support the schools responsibilities towards safeguarding.

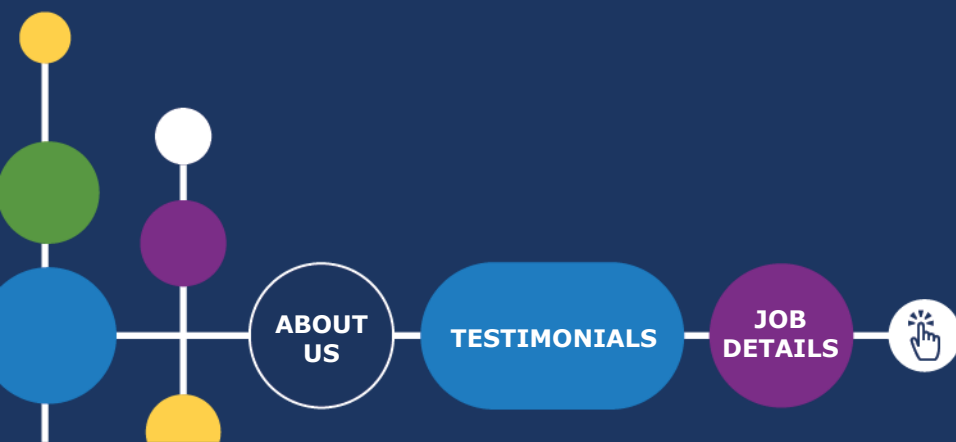
Dimensions:

- Range of Teachers and Support Staff approximately 35 across the whole academy.
- Range of pupils approximately 300. Number of SEN pupils varies.

Work/Business contacts:

Internal: All teachers and support staff including liaising with other MAT staff as required.

External: Parents/Carers, Agencies.



JOB DESCRIPTION

Expertise in role required (At selection – Level 1):

ESSENTIAL

- Maths and English to GCSE Grade C or equivalent.
- Experience of working with children/young people in a school.
- Experience of working with children who have SEN.
- Ability to engage and influence others.
- Excellent interpersonal skills and the ability to foster good relationships with parents/carers and other outside agencies.
- Excellent behaviour management skills.
- Commitment to the safeguarding of young people.
- Ability to deal with the personal care and comfort, and necessary treatments with pupils, i.e. toileting and intimate care issues.
- Ability to assist the teacher in planning class activities.
- Ability to prepare differentiated materials and teaching aids suitable for learning activities.
- Ability to use ICT to support learning.

DESIRABLE

- NVQ 3 for Teaching Assistants or equivalent qualifications or experience.
- Experience of working across departments and with external organisations.
- Ability to monitor and evaluate impact of interventions and strategies.
- Is willing to work flexibly within scope of overall hours.

ABOUT
US

TESTIMONIALS

JOB
DETAILS

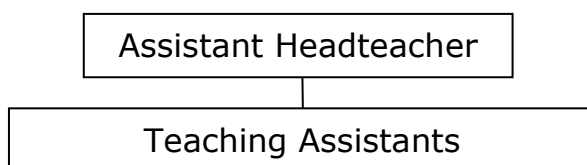


JOB DESCRIPTION

Expertise in role – After initial and advanced development:

- Ability to deal with students who require physical restraint and interventions, using such methods as Team Teach, under the direction of the Head of School.
- Ability to assess individual students core skills and maintain appropriate records.
- Working knowledge or understanding of relevant policies and codes of practice.
- Trained in the relevant learning strategies e.g. literacy.
- Achieved NVQ 3 for Teaching Assistants or equivalent qualifications or experience.

Structure/Department Information:



HOW TO APPLY

Please note that CVs will not be accepted. To apply, please complete an application form on the Every Candidate Portal using the application link below.

Application link:

<https://candidates.every.education/Vacancies/Details?advertKey=accbd929-74b9-43aa-8f42-0691080f74d0>

Closing date:

Sunday 8th December 2024, 11:59pm

Interview date:

Friday 13th December 2024

Share MAT is committed to the Equalities Act 2010 and also to promoting the welfare and safeguarding of children and young people, by adhering to the "Keeping Children Safe in Education" guidance. All staff and volunteers are regularly trained regarding our expectations in keeping our students safe. An enhanced DBS is required for every post. An online search will be undertaken for all shortlisted candidates.

ABOUT
US

TESTIMONIALS

JOB
DETAILS





*Ready to start your career with Share MAT?
Get in touch:*

Visit

millbridge.org.uk

Email

millbridge.office@sharemat.co.uk

Call

01924 668836

Address

Millbridge, A SHARE Primary Academy
Vernon Road, Liversedge, West Yorkshire
WF15 6HU

Visit the trust website **www.sharemat.org**